

TS35 BIN FILL CONVEYOR

EQUIPMENT REVISION: 03A

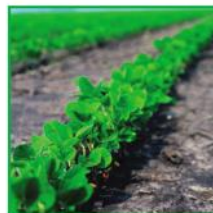


PARTS MANUAL

Document: MD-09-06-5012

Revision: A

Effective Date: 02-2020



INTRODUCTION

Thank you for choosing USC, LLC for your equipment needs. We appreciate your business and will work diligently to ensure that you are satisfied with your choice.

OVERVIEW

The purpose of this manual is to provide you with the basic information needed to operate and maintain the Tube Series 3500 Bin Fill Conveyor. It does not hold USC, LLC liable for any accidents or injuries that may occur.

The technical information provided in this document is based on extensive testing under controlled conditions at the USC research and development facility.

This information is given without guarantee as the conditions of operation and storage of the equipment are beyond our control. Variables such as temperature, humidity, viscosity of chemical products and changes in seed size or variety may all effect the accuracy of application and seed coverage. Periodically check the equipment

RECEIVING YOUR EQUIPMENT

As soon as the equipment is received, it should be carefully inspected to make certain that it has sustained no damage during shipment and that all items listed on the packing list are accounted for. If there is any damage or shortages, the purchaser must immediately notify USC, LLC. Ownership passes to purchaser when the unit leaves the USC, LLC. premises. The purchaser is responsible for unloading and mounting all components of the equipment.

Document the serial number of the machine for future reference. The serial number



SERIAL NUMBER: _____

TABLE OF CONTENTS

<u>Section</u>	<u>Contents</u>	<u>Page #</u>
Section A	Safety Instructions	4
Section B	Parts Drawings	15
	Index by part number	62
Section C	Limited Warranty	64

SECTION A SAFETY INSTRUCTIONS

Every year accidents in the work place maim, kill and injure people. Although it may be impossible to prevent all accidents, with the right combination of training, operating practices, safety devices, and operator vigilance, the number of accidents can be significantly reduced. The purpose of this section is to educate equipment users about hazards, unsafe practices, and recommended hazard avoidance techniques.

If any of the required regularly scheduled maintenance is located above the reach of the operator, they should follow the companies normal safe practices of reaching that particular height, utilizing the companies specified equipment and following normal safety precautions.

When working with treatment chemicals, operators should always wear protective gloves, safety glasses, and follow the companies safety precautions in the case of any spillage or operator contamination.

SAFETY WORDS AND SYMBOLS

It is very important that operators and maintenance personnel understand the words and symbols that are used to communicate safety information. Safety words, their meaning and format, have been standardized for U.S. manufacturers and published by the American National Standards Institute (ANSI). The European Community (E.C.) has adopted a different format based on the International Standards Organization



Indicates an imminently hazardous situation which, if not avoided, **will** result in death or serious injury.



Indicates a potentially hazardous situation which, if not avoided, **could** result in death or serious injury.



Indicates a potentially hazardous situation which, if not avoided, **may** result in minor or moderate injury and/or property damage.





Mandatory Lockout Power Symbol. Disconnect, lockout and tag-out electrical and other energy sources before inspecting, cleaning or performing maintenance on this panel.



International Safety Alert Symbol. The exclamation point (!) surrounded by a yellow triangle indicates that an injury hazard exists. However, it does not indicate the seriousness of potential injury. The exclamation point (!) is also used with the DANGER, WARNING and CAUTION symbols so the potential injury is indicated.



Electrocution Hazard Symbol. This symbol indicates that an electrocution hazard exists. Serious injury or death could result from contacting high voltage.



International Electrocution Hazard. This symbol indicates that an electrocution hazard exists. Serious injury or death could result from contacting high voltage.



Mandatory Read Manual Action Symbol. (I.S.O. format) This symbol instructs personnel to read the Operators Manual before servicing or operating the equipment.

NOTICE

Mandatory Read Manual Action Symbol. This symbol instructs

LOCKOUT / TAGOUT PROCEDURES

Lockout/Tagout is the placement of a lock/tag on an energy isolating device in accordance with an established procedure. When taking equipment out of service to perform maintenance or repair work, always follow the lockout/tagout procedures as outlined in ANSI Z344.1 and/or OSHA Standard 1910.147. This standard “requires employers to establish a program and utilize procedures for affixing appropriate lockout devices or tagout devices to energy isolating devices and to otherwise disable machines or equipment to prevent unexpected energizing, start-up, or release of stored energy in order to prevent injury to employees.”

CONTROLLED STOP

This is the stopping of machine motion by reducing the electrical command signal to 0 (zero) once the stop signal has been recognized.

HAZARD REVIEW



Electrocution Hazard

Electrocution accidents are most likely to occur during maintenance of the electrical system or when working on or near exposed high voltage wiring. This hazard does not exist when the electrical power has been disconnected, properly locked, and tagged out.



Automatic Start Hazard

The equipment may be controlled by an automated system and may start without warning. Failure to properly disconnect, lockout, and tagout all energy sources of remotely controlled equipment creates a very hazardous situation and could cause injury or even death. PLEASE STAY CLEAR AND BE ALERT.

YOU are responsible for the **SAFE** operation and maintenance of your USC, LLC equipment . **YOU** must ensure that you and anyone else who is going to operate, maintain or work around the equipment be familiar with the operating and maintenance procedures and related **SAFETY** information contained in this manual. This manual will take you step-by-step through your working day and alert you to good safety practices that should be adhered to while operating the equipment

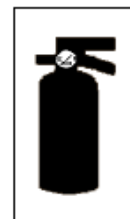
Remember, **YOU** are the key to safety. Good safety practices not only protect you, but also the people around you. Make these practices a working part of your safety program. Be certain that **EVERYONE** operating this equipment is familiar with the recommended operating and maintenance procedures and follows all the safety precautions. Most accidents can be prevented. Do not risk injury or death by ignoring good safety practices.

- Equipment owners must give operating instructions to operators or employees before allowing them to operate the machine, and at least annually thereafter per OSHA (Occupational Safety and Health Administration) regulation 1928.57.
- The most important safety device on this equipment is a **SAFE** operator. It is the operator's responsibility to read and understand **ALL** Safety and Operating instructions in the manual and to follow them. All accidents can be avoided.
- A person who has not read and understood all operating and safety instructions is not qualified to operate the machine. An untrained operator exposes himself and bystanders to possible serious injury or death.
- Do not modify the equipment in any way. Unauthorized modification may impair the function and/or safety and could affect the life of the equipment.
- Think **SAFETY!** Work **SAFELY!**



GENERAL SAFETY

1. Only trained persons shall operate the equipment . An untrained operator is not qualified to operate the machine.
2. Have a first-aid kit available for use should the need arise, and know how to use it.



5. Wear appropriate protective gear. This includes but is not limited to:

- A hard hat
- Protective shoes with slip resistant soles
- Protective goggles
- Heavy gloves
- Hearing protection
- Respirator or filter mask



6. Place all controls in neutral or off, stop motor, and wait for all moving parts to stop. Then disable power source before servicing, adjusting, repairing, or unplugging.



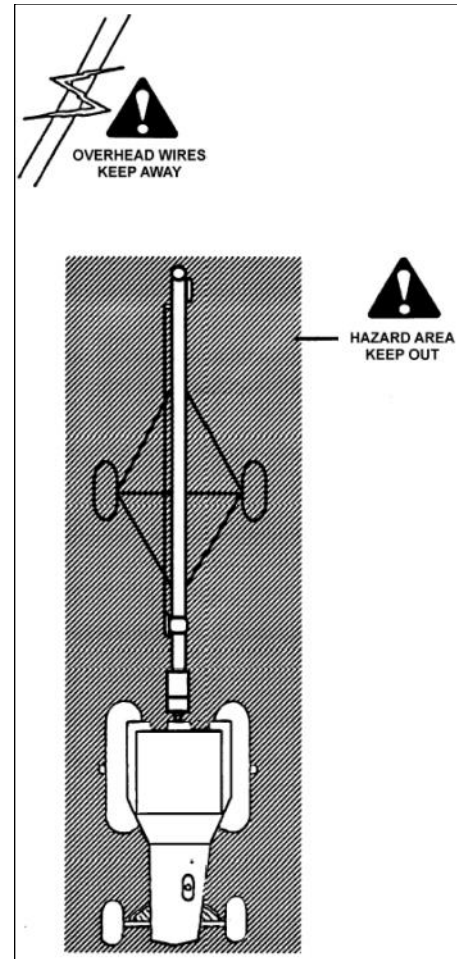
7. Review safety related items annually with all personnel who will be operating or maintaining the conveyor.

OPERATING SAFETY:

1. Read and understand the operator's manual and all safety signs before using.
2. Disconnect and disable electrical supply completely and wait for all moving parts to stop before servicing, adjusting, repairing or unplugging.
3. Clear the area of bystanders, especially children, before starting.
4. Be familiar with the machine hazard area. If anyone enters hazard area, shut down machine immediately. Clear the area before restarting.
5. Keep hands, feet, hair and clothing away from all moving and/or rotating parts.
6. Stay away from overhead obstructions and power lines during operation and transporting. Electrocutation can occur without direct contact.
7. Do not operate machine when any guards are removed.
8. Inspect welds and repair if needed.

TRANSPORT SAFETY

1. Read and understand ALL the information in the operator's manuals regarding procedures and SAFETY when moving or transporting the conveyor.
The conveyor should NEVER be transported with the axles in the extended position.
2. Check with local authorities regarding conveyor transport on public roads. Obey all applicable laws and regulations.
3. Always travel at a safe speed. Use caution when making corners or meeting traffic.
4. Make sure the SMV (Slow Moving Vehicle) emblem and all the lights and reflectors that are required by the local highway and transport authorities are in place, are clean and can be seen clearly by all overtaking and oncoming traffic.
5. Do not allow riders on the conveyor or the towing vehicle when transporting.
6. Attach conveyor to towing vehicle with a pin and retainer.
7. Lower conveyor to its lowest position for transporting. Keep lift point at drawbar height.
8. Keep to the right and yield the right-of-way to allow faster traffic to pass. Drive on the road shoulder, if permitted by law.
9. Do not exceed 25 m.p.h. (40 km/h). Reduce speed on rough roads and surfaces.
10. Stay away from overhead obstructions and power



PLACEMENT SAFETY

1. Move only with the appropriate equipment
2. Stay away from overhead power lines when moving the conveyor. Electrocution can occur without direct contact.
3. Be familiar with machine hazard area. If anyone enters hazard areas, shut down machine immediately. Clear the area before restarting.
4. Operate the conveyor on level ground free of debris. Anchor the conveyor to

TIRE SAFETY

1. Failure to follow proper procedures when mounting a tire on a wheel or rim can produce an explosion which may result in serious injury or death.
2. Do not attempt to mount a tire unless you have the proper equipment and experience to do the job.
3. Have a qualified tire dealer or repair service perform required tire maintenance.
4. When replacing worn tires, make sure they meet the original tire specifications.



Before placement of the conveyor, be sure that ground is reasonably level. The conveyor may topple or work improperly if the ground is too uneven, damaging the equipment and/or

MAINTENANCE SAFETY

1. Review the operator's manual and all safety items before working with, maintaining or operating the equipment.
2. Place all controls in neutral or off, stop motors, disable power source, and wait for all moving parts to stop before servicing, adjusting, repairing or unplugging.
3. Follow good shop practices:
Keep service area clean and dry.
Be sure electrical outlets and tools are properly grounded.
Use adequate light for the job at hand.
4. Keep hands, feet, hair and clothing away from all moving and/or rotating parts.
5. Clear the area of bystanders, especially children, when carrying out any maintenance and repairs or making any adjustments.
6. Before resuming work, install and secure all guards when maintenance work is



SAFETY LABELS

1. Keep safety labels clean and legible at all times.
2. Replace safety labels that are missing or have become illegible.
3. Replaced parts that displayed a safety label should also display the current label.
4. Replacement safety labels are available. Contact your authorized dealer.

How to Install Safety Labels:

- Be sure that the installation area is clean and dry.
- Be sure temperature is above 50°F (10°C).
- Decide on the exact position before you remove the backing paper.
- Remove the smallest portion of the split backing paper.
- Align the sign over the specified area and carefully press the small portion with the exposed sticky backing in place.
- Slowly peel back the remaining paper and carefully smooth the remaining portion of the sign in place.

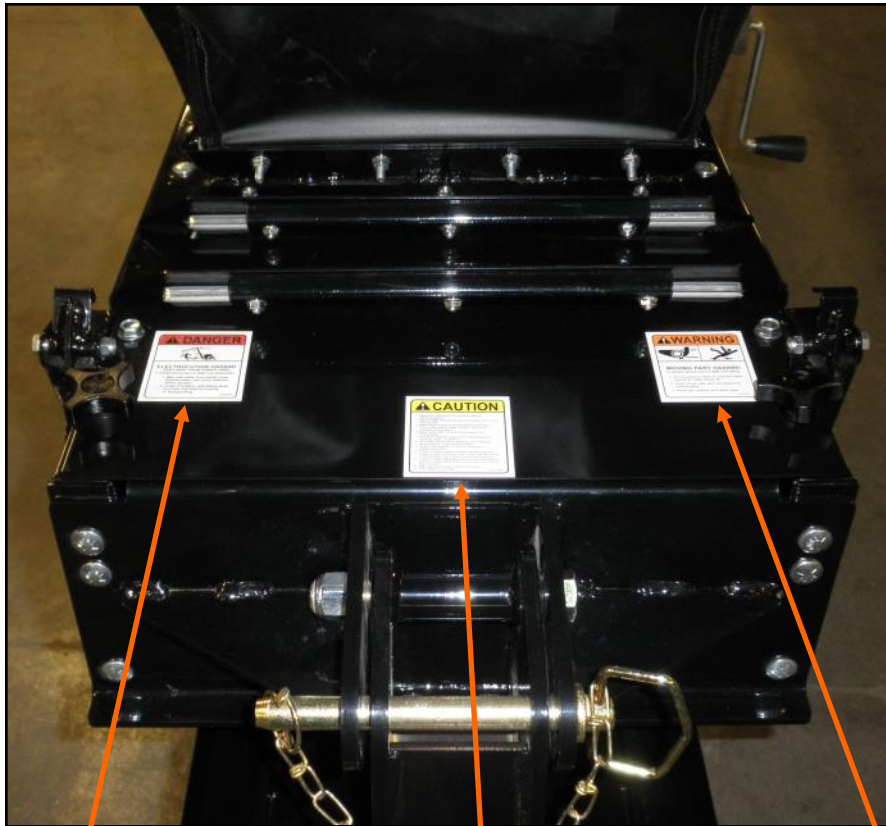


Located on the USC equipment you will find safety labels.
Always be sure to read and follow all directions on the labels.



Part # 09-02-0015

TS3500 BIN FILL CONVEYOR



⚠ DANGER

ELECTROCUTION HAZARD
KEEP AWAY FROM POWER LINES

To prevent serious injury or death from electrocution:

1. Stay well away from power lines. Electrocution can occur without direct contact.
2. Lower Conveyor well below level of power line before moving or transporting.

09-02-0007

Part # 09-02-0007

⚠ CAUTION

1. Read and understand the Operator's Manual before operating.
2. Keep all safety shields and devices in place and in good working order.
3. Make certain everyone is clear before operating or moving the machine. Keep children, visitors and untrained people away.
4. Keep hands, feet, hair and clothing away from moving parts.
5. Shut off and disable power source before adjusting, servicing, repair, or cleaning.
6. Disconnect power before resetting motor overload.
7. Be sure electric motors are grounded.
8. Support discharge end or anchor intake end to prevent upending.
9. Empty Conveyor before moving to prevent upending.
10. Lower conveyor to its fully down position before moving or transporting. Use a tractor to move and transport.
11. Lower Conveyor well below level of power lines before moving or transporting. Electrocution can occur without direct contact.
12. Keep away from intake. Keep others away.
13. Train operators annually.

09-02-0006

Part # 09-02-0006

⚠ WARNING

MOVING PART HAZARD

To prevent serious injury or death from falling:

1. Do not stand or climb on machine when operating. Keep others off.
2. Keep hands, feet, and hair away from moving parts.
3. Wear tight clothing and safety gear.

09-02-0011

Part # 09-02-0011

Think **SAFETY!** Work **SAFELY!**

REMEMBER—If safety labels have been damaged, removed, become illegible, or parts replaced without safety labels, new labels must be applied. New safety labels are



Part # 09-02-0008



Part # 09-02-0009

TS3500 BIN FILL CONVEYOR



WARNING

MOVING PART HAZARD
To prevent serious injury or death from falling:

1. Do not stand or climb on machine when operating. Keep others off.
2. Keep hands, feet, and hair away from moving parts.
3. Wear tight clothing and safety gear.

09-02-0011

Part # 09-02-0011



DANGER

ELECTROCUTION HAZARD

1. Turn machine OFF, shut down and lock out power source, unplug power cord and wait for all moving parts to stop before servicing or repairing electrical components.
2. Keep electrical components in good repair.

09-02-0010

Part # 09-02-0010

DANGER

MISSING SHIELD HAZARD

Install and secure shield before operating.

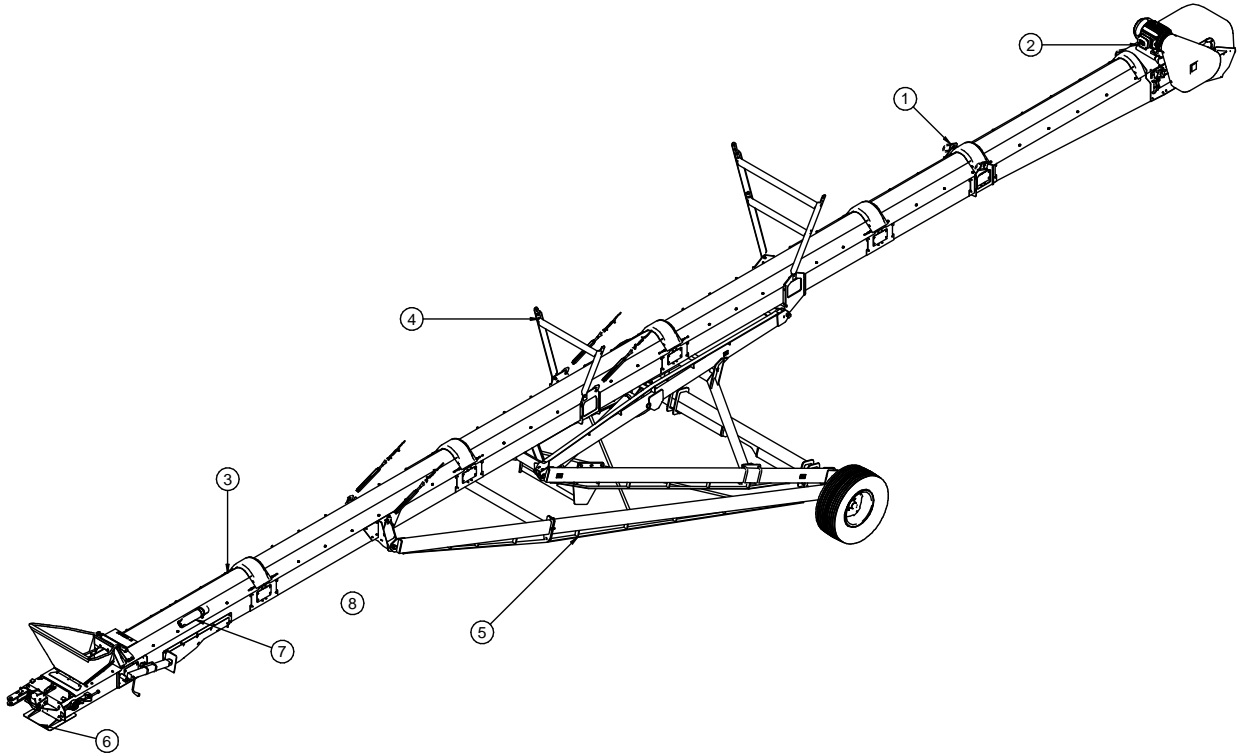
09-02-0012

Part # 09-02-0012

MECHANICAL DRAWINGS SECTION B

The following pages show the parts of the TS35 bin fill conveyors. Please have the bin fill conveyor serial number and part number ready when ordering parts.

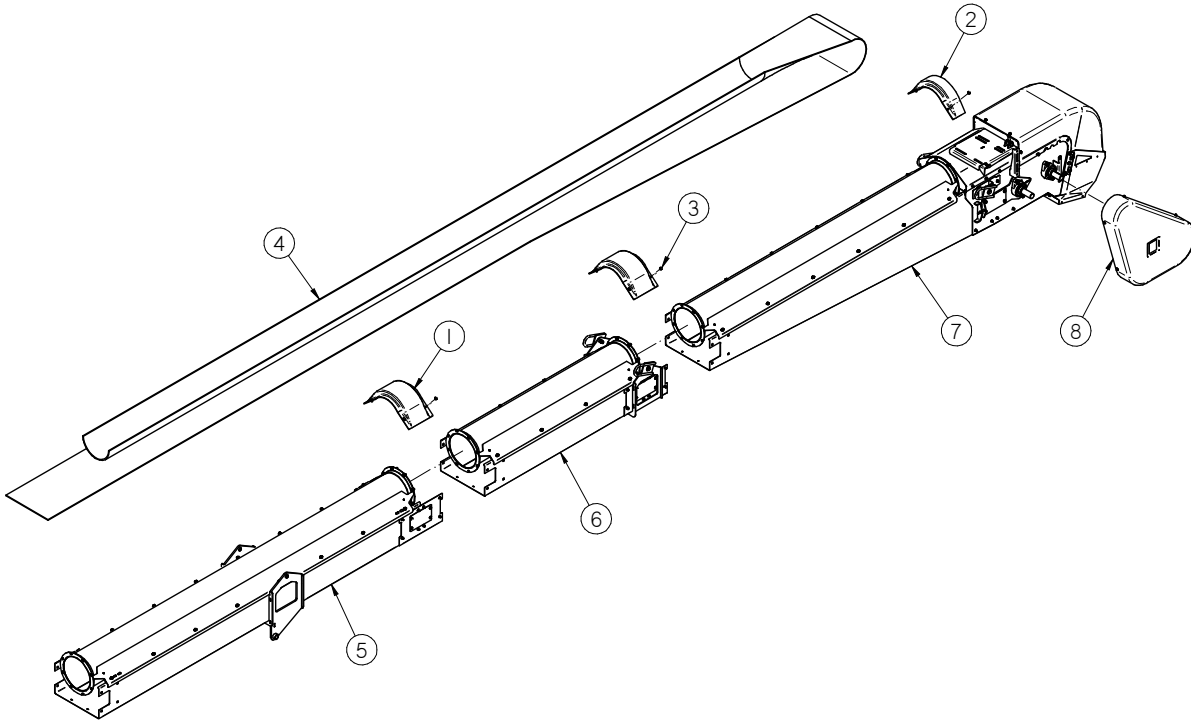
GENERAL ASSEMBLY



Item #	Description	See Page
1	HEAD ASSEMBLY	16-32
2	MOTORS	24
3	INLET ASSEMBLY	33-45
4	CABLE KIT	46-50
5	UNDERCARRIAGE	51-57
6	HITCH	58-59
7	MANUAL HOLDER	60
8	DECALS	61

TS3500 BIN FILL CONVEYOR

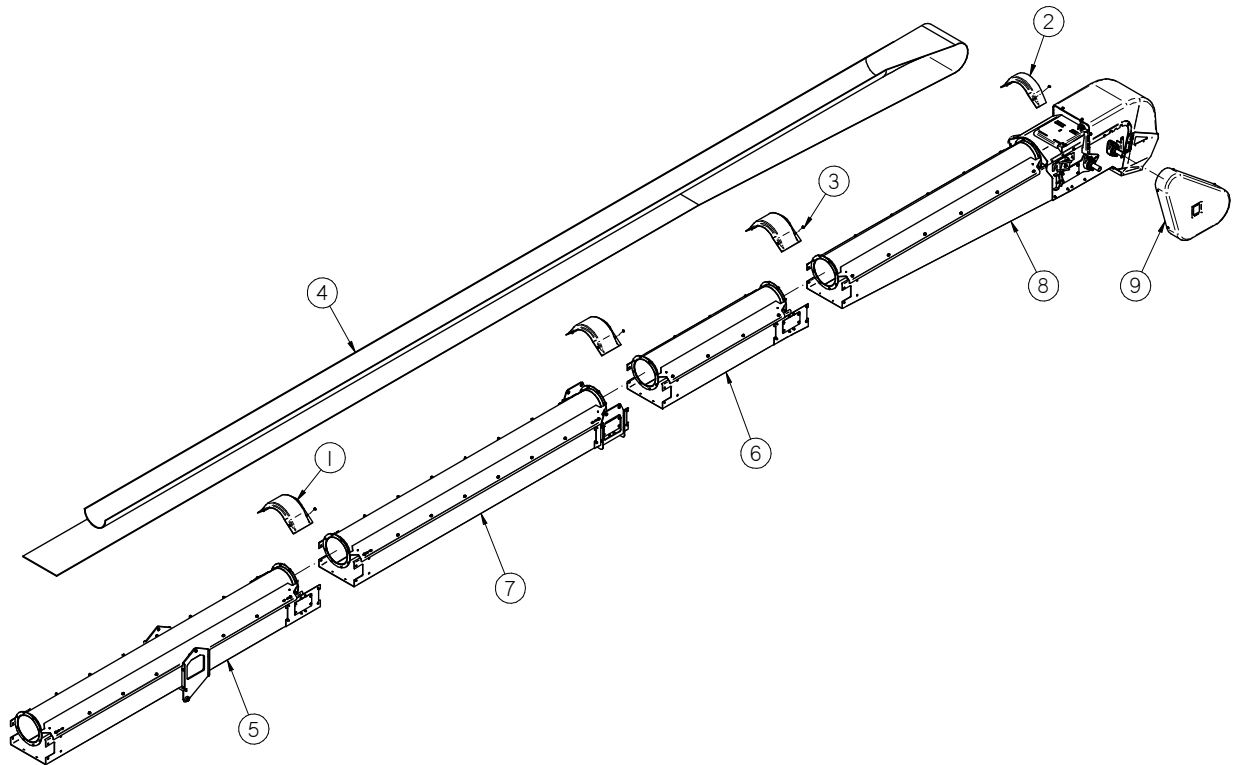
ASSEMBLY HEAD HALF 55 FT. (13-08-0827 REV A1)



PART #		13-08-0827 REV A1		
Item #	Part #	Description	Qty	See Page
1	05-06-0122	CVR SPLICE RND CNV 10IN	2	
2	05-06-0123	CVR SPLICE INLET RND CNV 10IN	1	
3	06-01-0261	BOLT FLG .3125-18 X .500 ZP GR5	10	
4	11-02-0150	BELT CNVR CLTS TS2016	1	
5	13-08-0589	ASSY CNVR 10FT X 16IN MNT SECT BL	1	29
6	13-08-0596	ASSY 5FT MID BL TS35	1	25
7	13-08-0791	ASSY HD SECT TS35 BL LG BRG	1	19
8	13-08-0792	KIT DRV 10HP TS35 BL LG BRG	1	23

TS3500 BIN FILL CONVEYOR

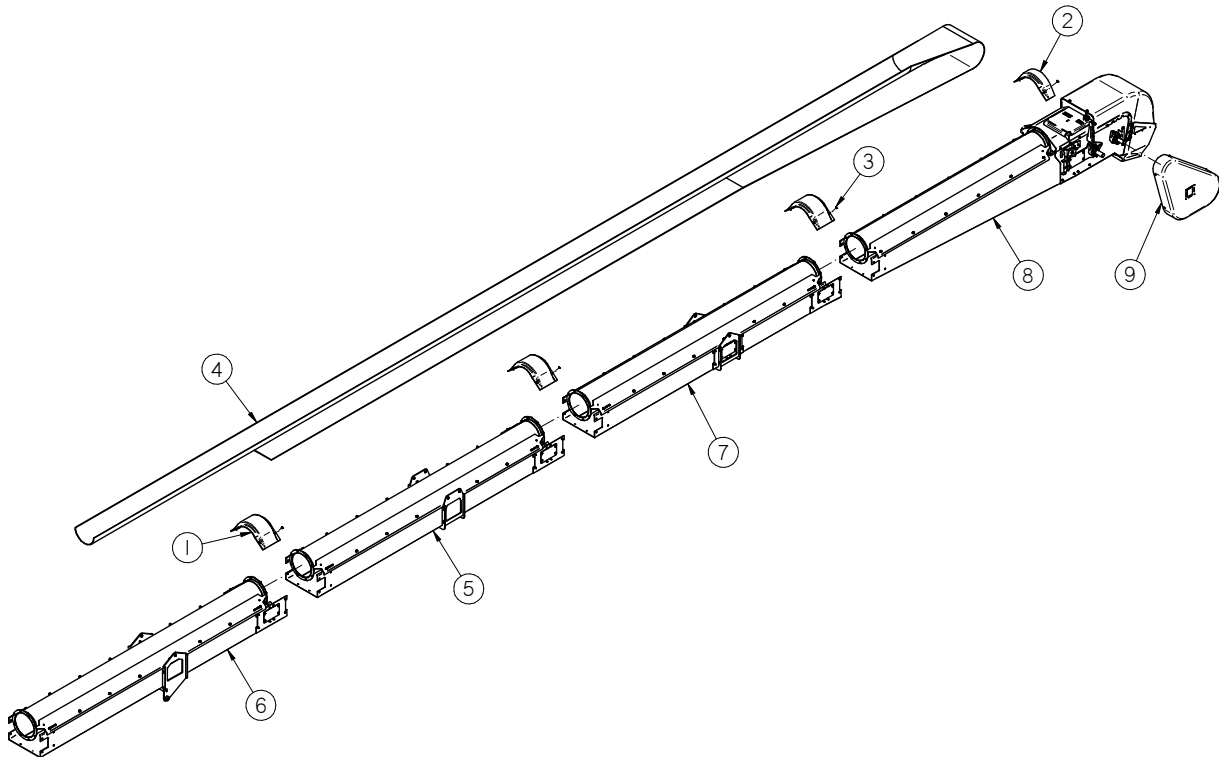
ASSEMBLY HEAD HALF 65 FT. (13-08-0828 REV A1)



PART #		13-08-0828 REV A1		
Item #	Part #	Description	Qty	See Page
1	05-06-0122	CVR SPLICE RND CNV 10IN	3	
2	05-06-0123	CVR SPLICE INLET RND CNV 10IN	1	
3	06-01-0261	BOLT FLG .3125-18 X .500 ZP GR5	14	
4	11-02-0152	BELT CNVR CLTS TS3016	1	
5	13-08-0589	ASSY CNVR 10FT X 16IN MNT SECT BL	1	29
6	13-08-0591	ASSY 5FT MID BL TS35	1	27
7	13-08-0595	ASSY CNVR 10FT X 16IN SECT BL	1	32
8	13-08-0791	ASSY HD SECT TS35 BL LG BRG	1	19
9	13-08-0792	KIT DRV 10HP TS35 BL LG BRG	1	23

TS3500 BIN FILL CONVEYOR

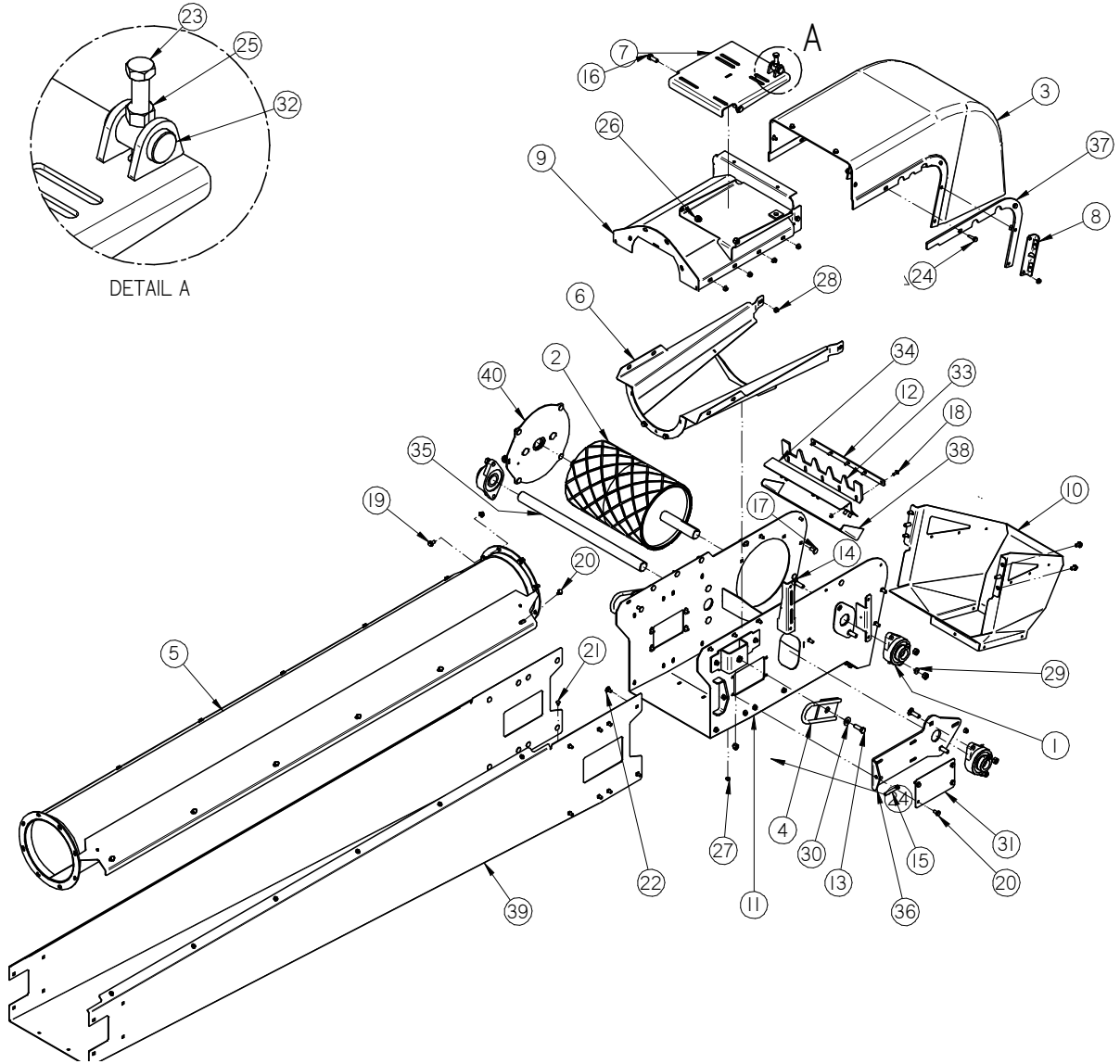
ASSEMBLY HEAD HALF 70 FT. (13-08-0829 REV A1)



PART #		13-08-0829 REV A1		
Item #	Part #	Description	Qty	See Page
1	05-06-0122	CVR SPLICE RND CNV 10IN	3	
2	05-06-0123	CVR SPLICE INLET RND CNV 10IN	1	
3	06-01-0261	BOLT FLG .3125-18 X .500 ZP GR5	14	
4	11-02-0153	BELT CNVR CLTS TS3516	1	
5	13-08-0588	ASSY CNVR 10FT CBL SUPP SECT BL	1	31
6	13-08-0589	ASSY CNVR 10FT X 16IN MNT SECT BL	1	29
7	13-08-0592	ASSY CNVR 10FT X 16IN MID SECT	1	30
8	13-08-0791	ASSY HD SECT TS35 BL LG BRG	1	19
9	13-08-0792	KIT DRV 10HP TS35 BL LG BRG	1	23

TS3500 BIN FILL CONVEYOR

ASSEMBLY HEAD SECTION ALL (13-08-0791 REV B0)



TS3500 BIN FILL CONVEYOR

ASSEMBLY HEAD SECTION ALL (13-08-0791 REV B0)

PART #		13-08-0791 REV B0		
Item #	Part #	Description	Qty	See Page
1	01-03-0077	BRG FLG MNT 1.500ID 2BOLT ECNTRC	3	
2	01-08-0137	PULLEY HD 10.00DIA X 15.50W LG BRG	1	
3	05-06-0128	CVR HD TS35 DD	1	
4	05-08-0428	WDMT SWVL CABLE ATTACH	2	
5	05-08-0508	WDMT TUBE 10IN X 95IN	1	
6	05-08-0547	WDMT HD TRANS TS35	1	
7	05-08-0549	WDMT MTR MNT PLT LG	1	
8	05-08-0568	WDMT DSCHG HD MNT PLT	2	
9	05-08-0579	WDMT HD CVR TS35 BL	1	
10	05-08-0580	WDMT DSCHG SPOUT TS35 BL	1	
11	05-08-0749	WDMT DSCHG HD TS35 BL LG BRG	1	
12	05-10-3986	PLT S2000 CNVR BLT SCRAPER HLDR	1	
13	06-01-0025	BOLT .500-13 X 1.50 ZP GR5	2	
14	06-01-0026	BOLT CRG .500-13 X 1.75 ZP GR5	6	
15	06-01-0071	BOLT .375-16 X 2.50 ZP GR5	1	
16	06-01-0080	BOLT .500-13 X 1.25 ZP GR5	2	
17	06-01-0115	BOLT CRG .375-16 X 1.00 ZP GR5	4	
18	06-01-0122	BOLT CRG .250-20 X .750 ZP GR5	5	
19	06-01-0124	BOLT FLG .375-16 X .750 ZP GR5	10	
20	06-01-0138	BOLT FLG .3125-18 X .750 ZP GR5	24	
21	06-01-0150	BOLT CRG .250-20 X .500 ZP	3	
22	06-01-0153	BOLT CRG .375-16X.750 ZP SHORT NECK	32	
23	06-01-0221	BOLT .500-13 X 4.50 ZP GR5 FTH	1	
24	06-01-0343	BOLT FLG .3125-18 X 1.25 ZP GR5	4	
25	06-02-0004	NUT FULL .500-13 ZP GR5	7	
26	06-03-0004	NUT NYL LOCK .500-13 ZP GR5	4	
27	06-03-0013	NUT LOCK FLG .250-20 ZP GR5	8	
28	06-03-0014	NUT LOCK FLG .375-16 ZP GR5	43	
29	06-04-0004	WSHR LOCK SPLT .500 ZP	6	
30	06-05-0005	WSHR FLAT .500 ZP	2	
31	103B9A	PLT SPLICE COVER	2	
32	10414A	PIN MTR PIVOT	1	
33	10426E	RBBR SCRAPER 16IN FILL	1	
34	10484F	PLT BAFFLE MNT	1	
35	105C4F	SHAFT 25.25 X 1.50" JACK-HEAD	1	
36	105FCD	PLT TIGHTENER	1	

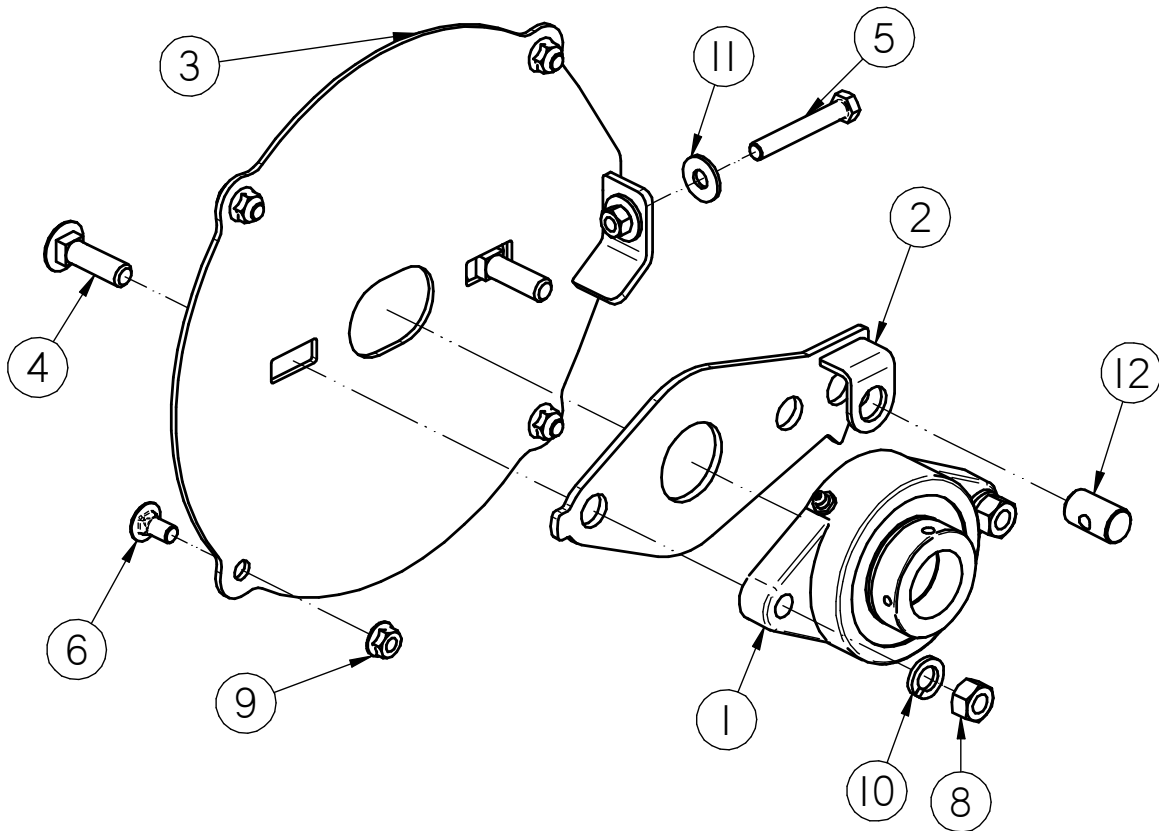


TS3500 BIN FILL CONVEYOR

ASSEMBLY HEAD SECTION ALL (13-08-0791 REV B0)

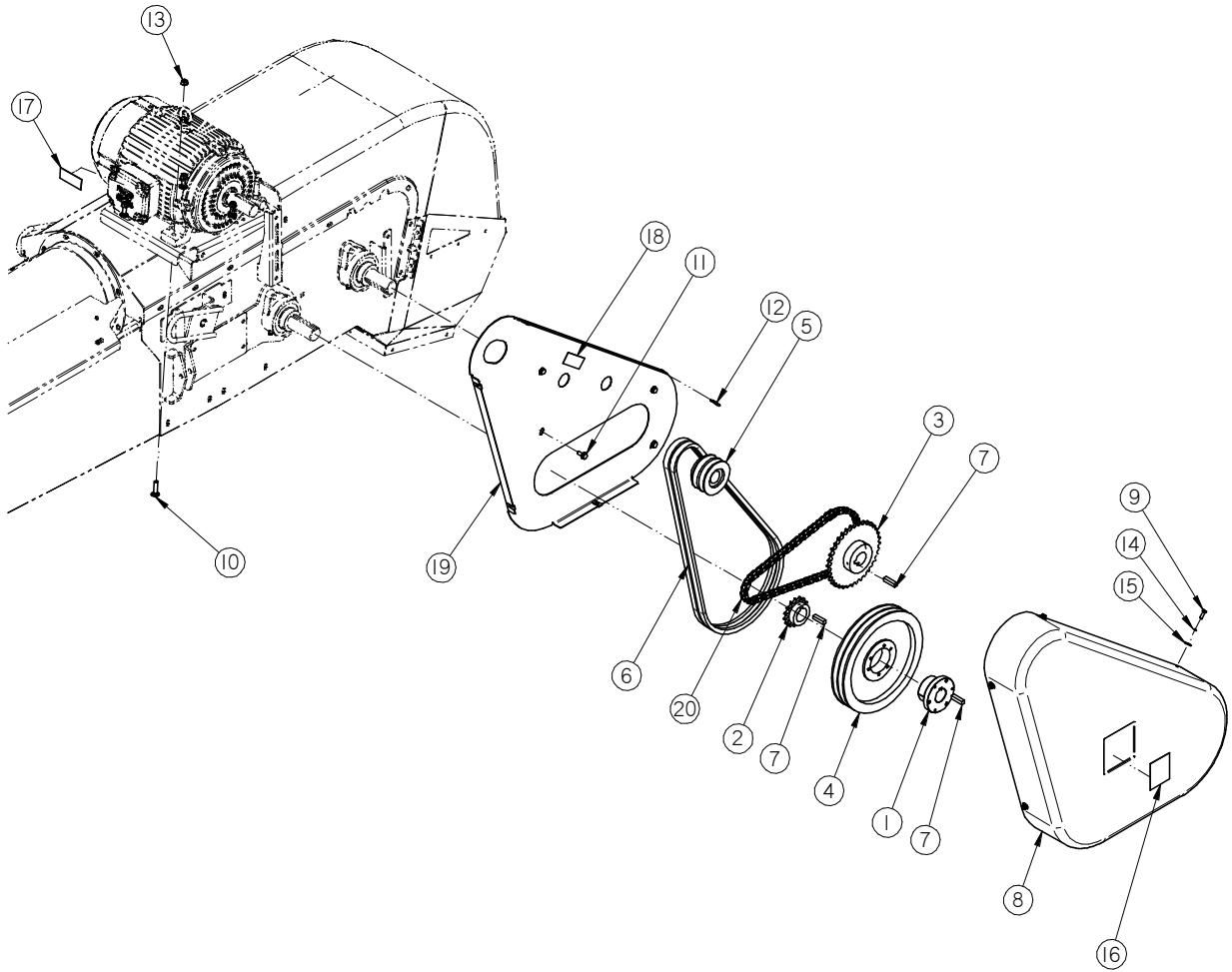
PART #		13-08-0791 REV B0		
Item #	Part #	Description	Qty	See Page
37	106987	PLT HD REINF TS35	2	
38	106989	RBBR SEAL HD TS35	1	
39	13-05-0522	ASSY FRAME HD W/RIVETNUTS	1	
40	13-08-0793	ASSY TRACKING PLT HD LG BRG	1	22

ASSEMBLY TRACKING PLATE (13-08-0793 REV A0)



PART #		13-08-0793 REV A0	
Item #	Part #	Description	Qty
1	01-03-0077	BRG FLG MNT 1.500ID 2BOLT ECNTRC	1
2	05-08-0706	WDMT TRACKING PIVOT LG BRG	1
3	05-08-0748	WDMT TRACKING PLT HD LG BRG	1
4	06-01-0026	BOLT CRG .500-13 X 1.75 ZP GR5	2
5	06-01-0071	BOLT .375-16 X 2.50 ZP GR5	1
6	06-01-0153	BOLT CRG .375-16X.750 ZP SHORT NECK	4
7	06-02-0003	NUT FULL .375-16 ZP GR5	1
8	06-02-0004	NUT FULL .500-13 ZP GR5	2
9	06-03-0014	NUT LOCK FLG .375-16 ZP GR5	4
10	06-04-0004	WSHR LOCK SPLT .500 ZP	2
11	06-05-0004	WSHR FLAT .375 ZP	2
12	104079	PIN TRACKING PIVOT	1

TS3500 BIN FILL CONVEYOR
KIT DRIVE ALL (13-08-0792 REV B0)



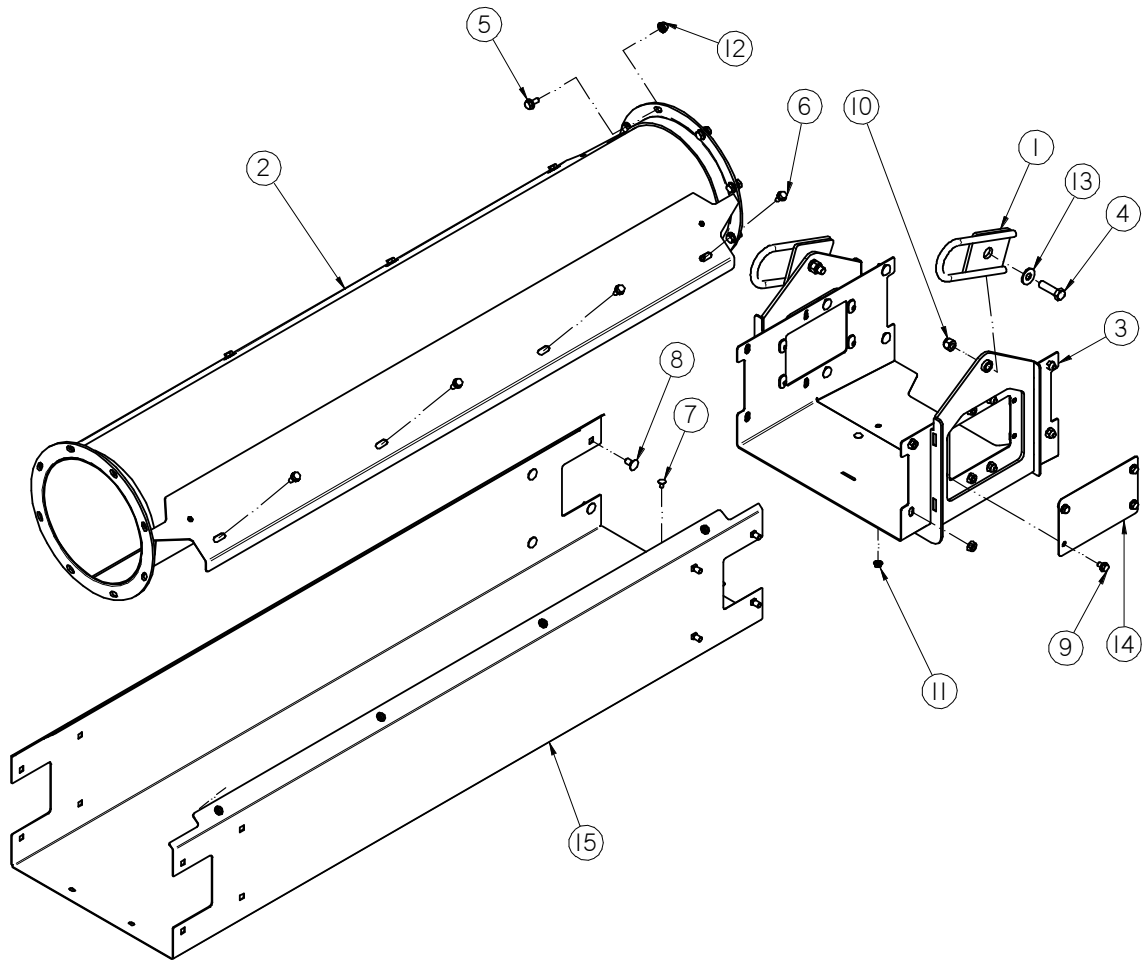
TS3500 BIN FILL CONVEYOR

KIT DRIVE ALL (13-08-0792 REV B0)

PART #		13-08-0792 REV B0	
Item #	Part #	Description	Qty
1	01-02-0143	BUSH 1.50IN BORE TYPE SK	1
2	01-02-0145	SPKT 15T 50P 1.50ID KWY	1
3	01-02-0146	SPKT 36T 50P 1.50ID KWY	1
4	01-08-0087	SHV 2B110SK	1
5	01-08-0119	SHV 2BK36 X 1.375 FSH BORE	1
6	01-08-0124	BELT BX63	2
7	01-10-0015	KEY .375 X 1.50 CS	3
8	05-06-0133	CVR BELT DRV BL	1
9	06-01-0006	BOLT .250-20 X .750 ZP GR5	5
10	06-01-0128	BOLT CRG .375-16 X 1.50 ZP GR5	4
11	06-01-0138	BOLT FLG .3125-18 X .750 ZP GR5	4
12	06-02-0047	NUT U-CLIP .250-20	5
13	06-03-0014	NUT LOCK FLG .375-16 ZP GR5	4
14	06-04-0001	WSHR LOCK SPLT .250 ZP	5
15	06-05-0001	WSHR FLAT .250 ZP	5
16	09-02-0009	ATWK LBL WARNING ROTATING PARTS	1
17	09-02-0010	ATWK LBL DANGER ELECTROCUTION	1
18	09-02-0012	ATWK LBL DANGER MISSING SHIELD	1
19	104D00	BACKPLATE BELT COVER BL	1
20	13-05-0695	ASSY RC- 50 61-LINKS (38 1/8")	1

MOTORS		
VOLTAGE	PART #	DESCRIPTION
240V / 1PH	01-01-0131	MTR 10HP 1760RPM 215T TEFC 230V 1PH
240 / 480 / 3PH	01-01-0291	MTR FD 10HP 1770RPM 215T TEFC 3PH
380-415V / 3PH	01-01-0220	MTR 10HP 1450RPM 215T TEFC 3PH 50HZ
575V / 3PH	01-01-0173	MTR EE 10HP 1760 215T TEFC 575V 3PH

ASSEMBLY 5 FT MID SECTION (13-08-0596 REV B0)

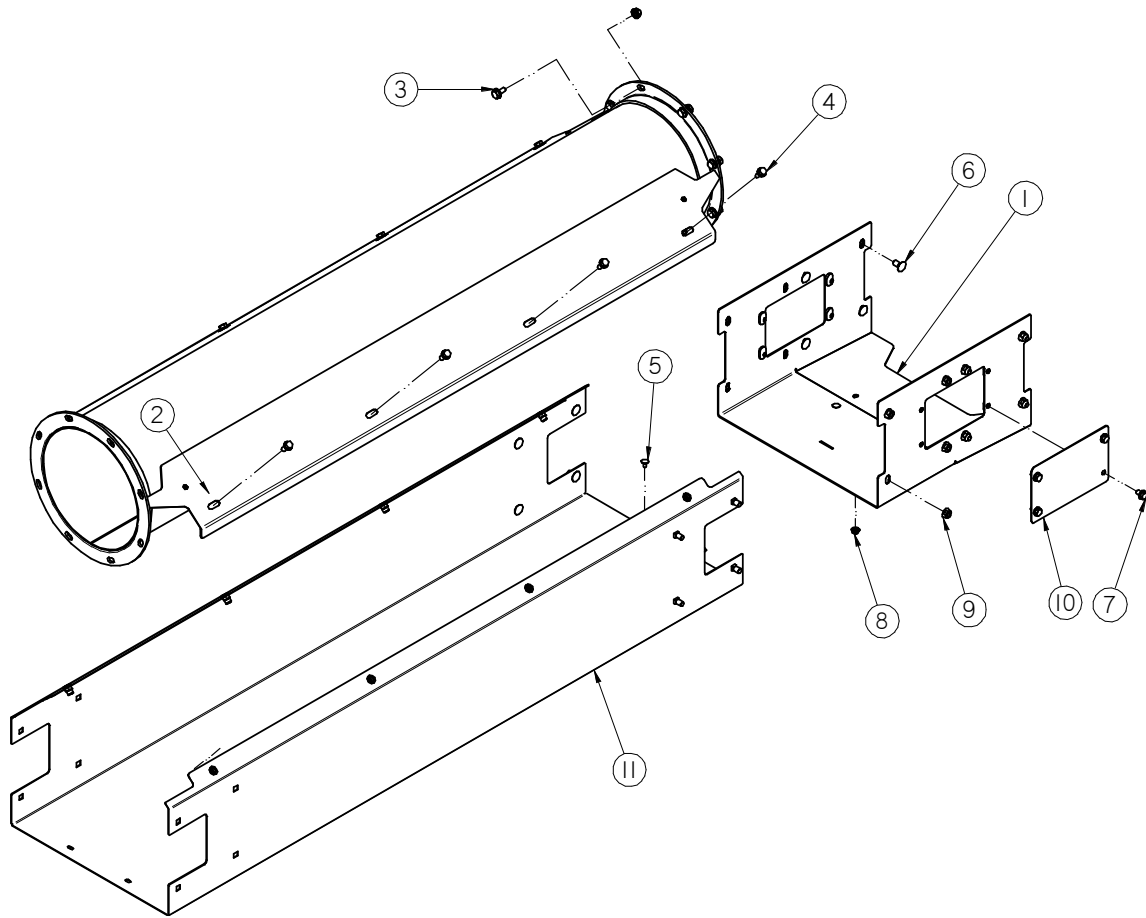


TS3500 BIN FILL CONVEYOR

ASSEMBLY 5 FT MID SECTION (13-08-0596 REV B0)

PART #		13-08-0596 REV B0	
Item #	Part #	Description	Qty
1	05-08-0428	WDMT SWVL CABLE ATTACH	2
2	05-08-0506	WDMT TUBE 10IN X 60IN	1
3	05-08-0517	WDMT SPLICE MID SECT BL	1
4	06-01-0054	BOLT .500-13 X 1.75 ZP GR5	2
5	06-01-0124	BOLT FLG .375-16 X .750 ZP GR5	8
6	06-01-0138	BOLT FLG .3125-18 X .750 ZP GR5	8
7	06-01-0150	BOLT CRG .250-20 X .500 ZP	4
8	06-01-0153	BOLT CRG .375-16X.750 ZP SHORT NECK	16
9	06-01-0261	BOLT FLG .3125-18 X .500 ZP GR5	8
10	06-03-0004	NUT NYL LOCK .500-13 ZP GR5	2
11	06-03-0013	NUT LOCK FLG .250-20 ZP GR5	4
12	06-03-0014	NUT LOCK FLG .375-16 ZP GR5	24
13	06-05-0005	WSHR FLAT .500 ZP	2
14	103B9A	PLT SPLICE COVER	2
15	13-05-0433	ASSY 5FT MID SECT W/RIVETNUTS	1

ASSEMBLY 5 FT MID SECTION (13-08-0591 REV A1)

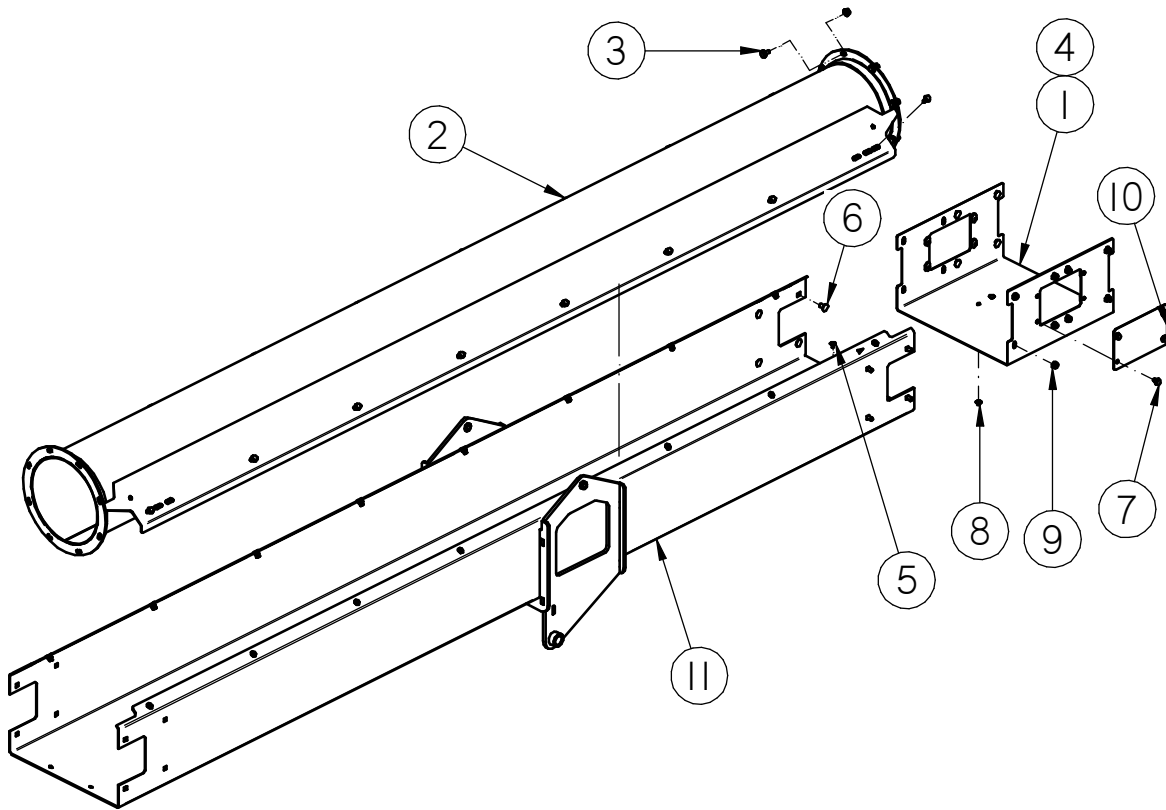


TS3500 BIN FILL CONVEYOR

ASSEMBLY 5 FT MID SECTION (13-08-0591 REV A1)

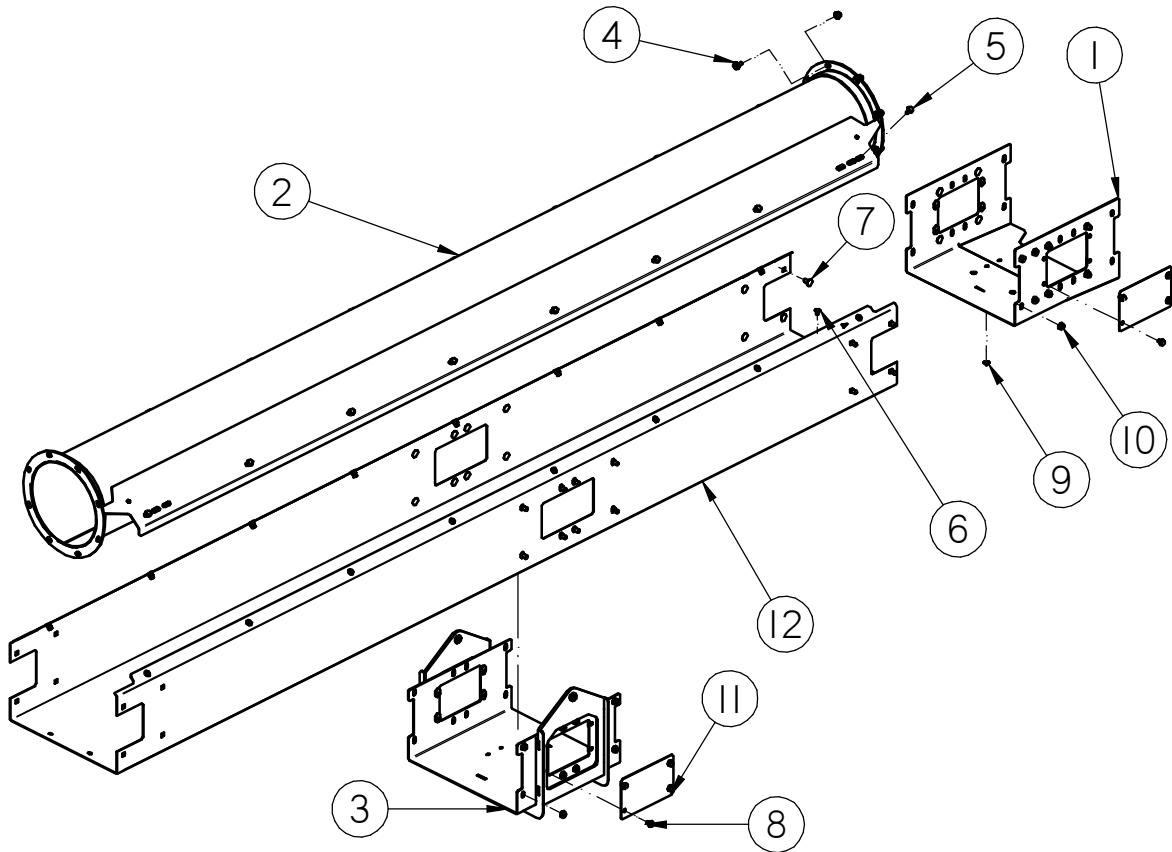
PART #		13-08-0591 REV A1	
Item #	Part #	Description	Qty
1	05-08-0436	WDMT SPLICE MID SECT BL	1
2	05-08-0506	WDMT TUBE 10IN X 60IN	1
3	06-01-0124	BOLT FLG .375-16 X .750 ZP GR5	8
4	06-01-0138	BOLT FLG .3125-18 X .750 ZP GR5	8
5	06-01-0150	BOLT CRG .250-20 X .500 ZP	4
6	06-01-0153	BOLT CRG .375-16X.750 ZP SHORT NECK	16
7	06-01-0261	BOLT FLG .3125-18 X .500 ZP GR5	8
8	06-03-0013	NUT LOCK FLG .250-20 ZP GR5	4
9	06-03-0014	NUT LOCK FLG .375-16 ZP GR5	24
10	103B9A	PLT SPLICE COVER	2
11	13-05-0433	ASSY 5FT MID SECT W/RIVETNUTS	1

ASSEMBLY 10 FT MOUNT SECTION (13-08-0589 REV B0)



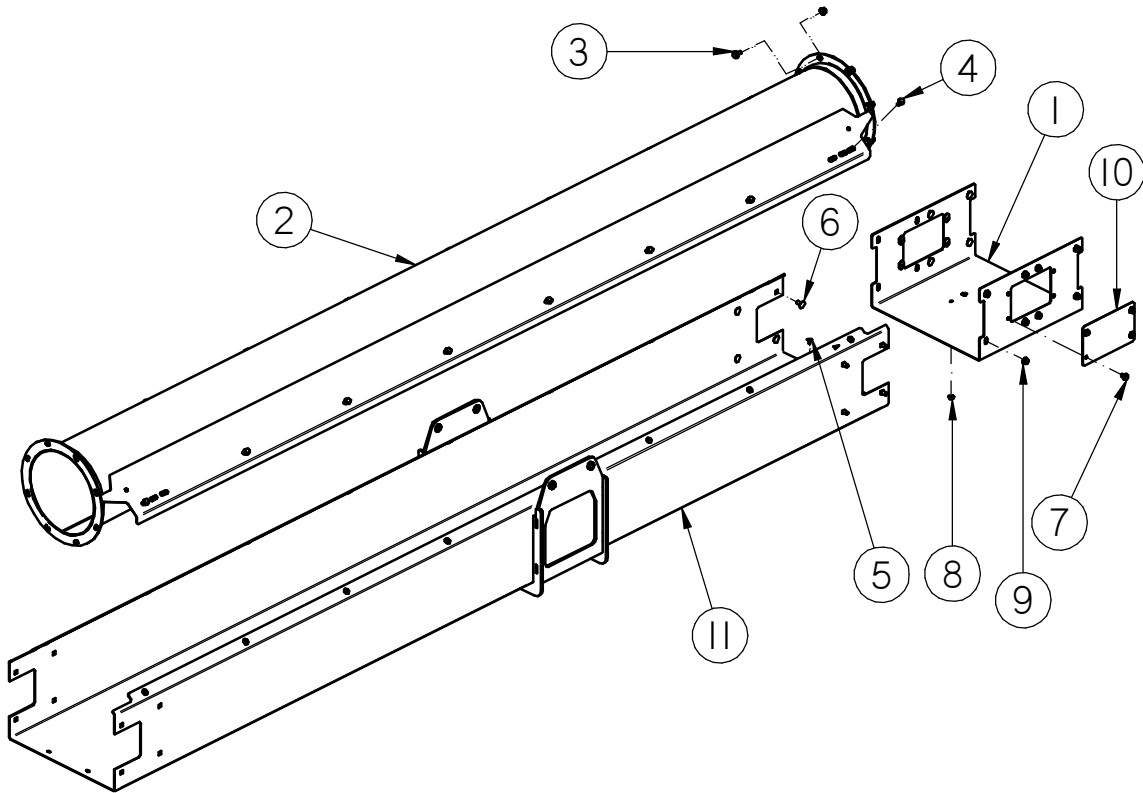
PART #		13-08-0589 REV B0	
Item #	Part #	Description	Qty
1	05-08-0412	WDMT SPLICE 16IN	1
2	05-08-0509	WDMT TUBE 10IN X 120IN	1
3	06-01-0124	BOLT FLG .375-16 X .750 ZP GR5	8
4	06-01-0138	BOLT FLG .3125-18 X .750 ZP GR5	16
5	06-01-0150	BOLT CRG .250-20 X .500 ZP	4
6	06-01-0153	BOLT CRG .375-16X.750 ZP SHORT NECK	16
7	06-01-0261	BOLT FLG .3125-18 X .500 ZP GR5	8
8	06-03-0013	NUT LOCK FLG .250-20 ZP GR5	4
9	06-03-0014	NUT LOCK FLG .375-16 ZP GR5	24
10	103B9A	PLT SPLICE COVER	2
11	13-05-0441	ASSY 10FT WDMT W/RIVETNUTS	1

ASSEMBLY 10 FT MID SECTION (13-08-0592 REV B0)



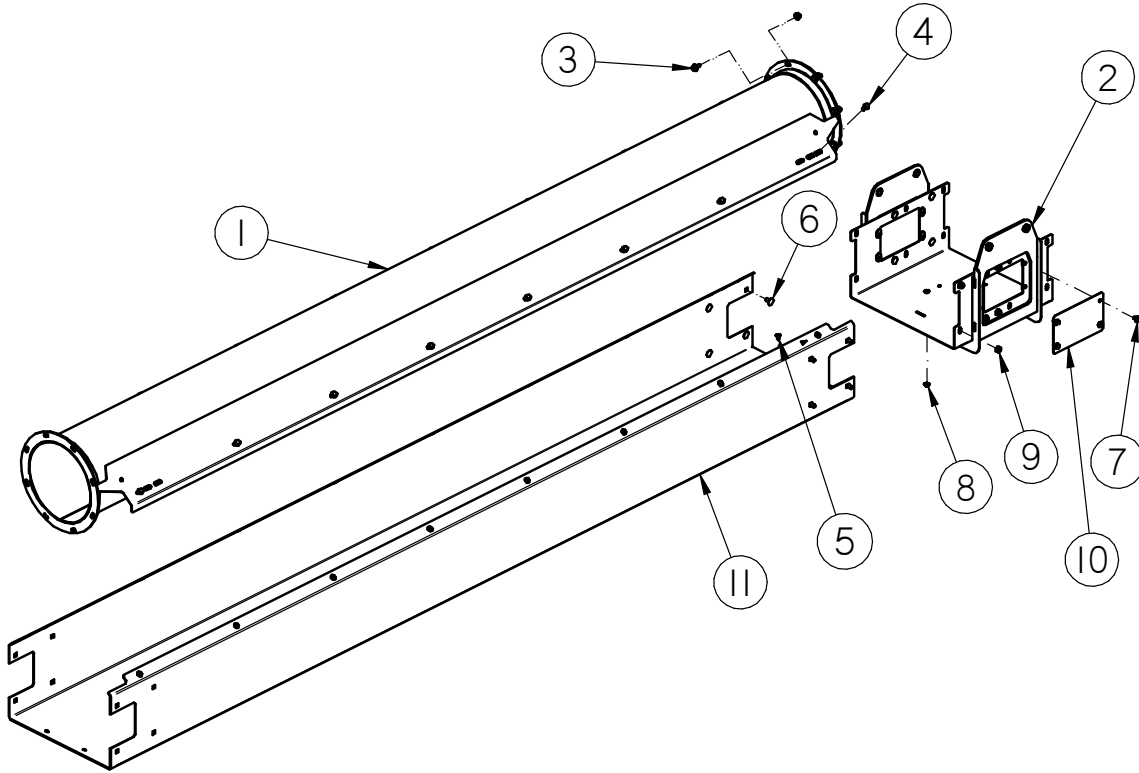
PART #		13-08-0592 REV B1	
Item #	Part #	Description	Qty
1	05-08-0436	WDMT SPLICE MID SECT BL	1
2	05-08-0509	WDMT TUBE 10IN X 120IN	1
3	05-08-0515	WDMT SPLICE CABLE SUPPORT	1
4	06-01-0124	BOLT FLG .375-16 X .750 ZP GR5	8
5	06-01-0138	BOLT FLG .3125-18 X .750 ZP GR5	16
6	06-01-0150	BOLT CRG .250-20 X .500 ZP	4
7	06-01-0153	BOLT CRG .375-16X.750 ZP SHORT NECK	32
8	06-01-0261	BOLT FLG .3125-18 X .500 ZP GR5	8
9	06-03-0013	NUT LOCK FLG .250-20 ZP GR5	4
10	06-03-0014	NUT LOCK FLG .375-16 ZP GR5	40
11	103B9A	PLT SPLICE COVER	2
12	13-05-0447	ASSY 10FT SECT W/RIVETNUTS	1

ASSEMBLY 10 FT CABLE SUPPORT SECTION (13-08-0588 REV B0)



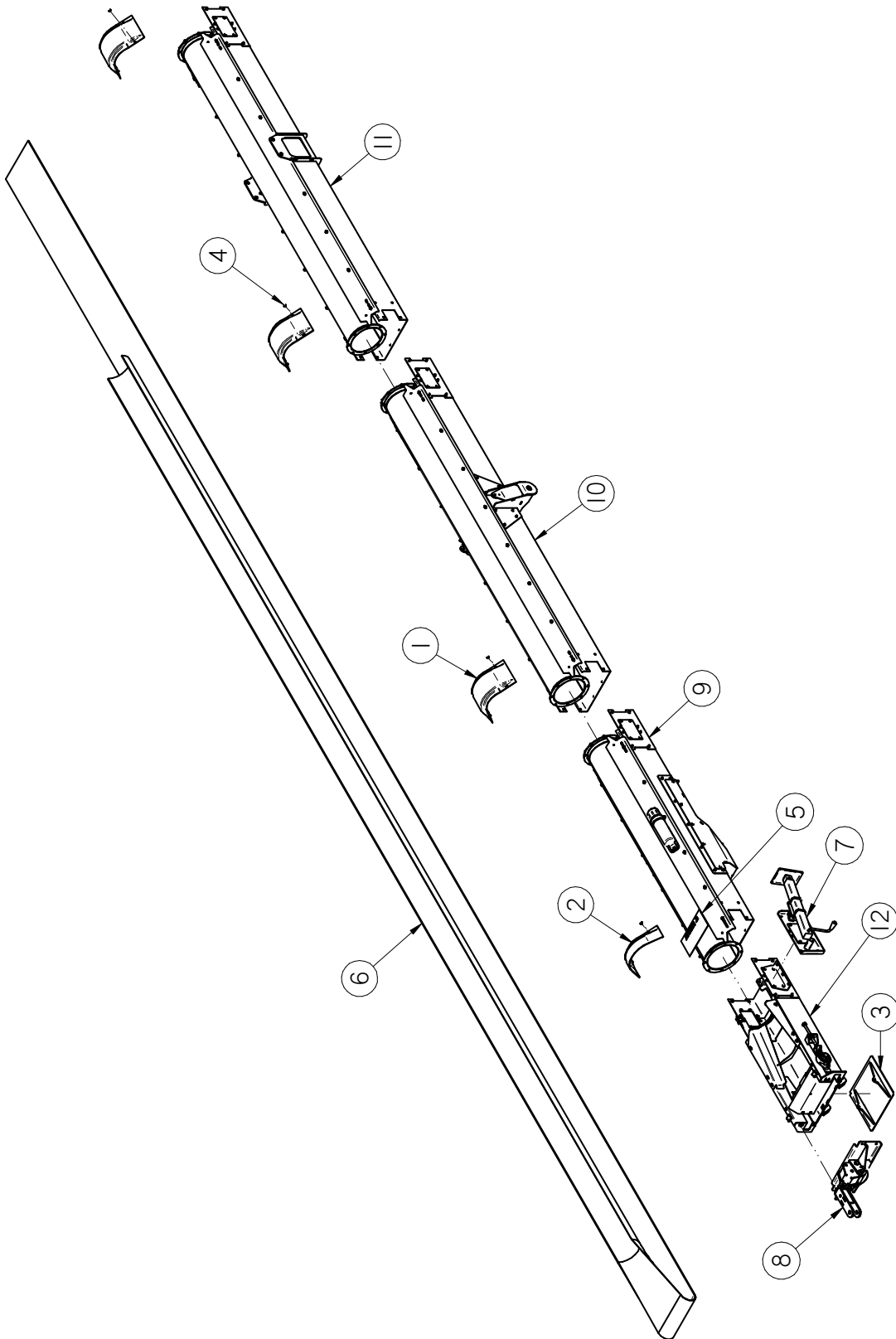
PART #		13-08-0588 REV B0	
Item #	Part #	Description	Qty
1	05-08-0412	WDMT SPLICE 16IN	1
2	05-08-0509	WDMT TUBE 10IN X 120IN	1
3	06-01-0124	BOLT FLG .375-16 X .750 ZP GR5	8
4	06-01-0138	BOLT FLG .3125-18 X .750 ZP GR5	16
5	06-01-0150	BOLT CRG .250-20 X .500 ZP	4
6	06-01-0153	BOLT CRG .375-16X.750 ZP SHORT NECK	16
7	06-01-0261	BOLT FLG .3125-18 X .500 ZP GR5	8
8	06-03-0013	NUT LOCK FLG .250-20 ZP GR5	4
9	06-03-0014	NUT LOCK FLG .375-16 ZP GR5	24
10	103B9A	PLT SPLICE COVER	2
11	13-05-0441	ASSY 10FT WDMT W/RIVETNUTS	1

ASSEMBLY 10 FT SECTION (13-08-0595 REV B0)



PART #		13-08-0595 REV B0	
Item #	Part #	Description	Qty
1	05-08-0509	WDMT TUBE 10IN X 120IN	1
2	05-08-0516	WDMT SPLICE CABLE SUPPORT DBL	1
3	06-01-0124	BOLT FLG .375-16 X .750 ZP GR5	8
4	06-01-0138	BOLT FLG .3125-18 X .750 ZP GR5	16
5	06-01-0150	BOLT CRG .250-20 X .500 ZP	4
6	06-01-0153	BOLT CRG .375-16X.750 ZP SHORT NECK	16
7	06-01-0261	BOLT FLG .3125-18 X .500 ZP GR5	8
8	06-03-0013	NUT LOCK FLG .250-20 ZP GR5	4
9	06-03-0014	NUT LOCK FLG .375-16 ZP GR5	24
10	103B9A	PLT SPLICE COVER	2
11	13-05-0448	ASSY 10FT CARB SECT W/RIVETNUTS	1

ASSEMBLY CONVEYOR INLET HALF (13-08-0826 REV A0)

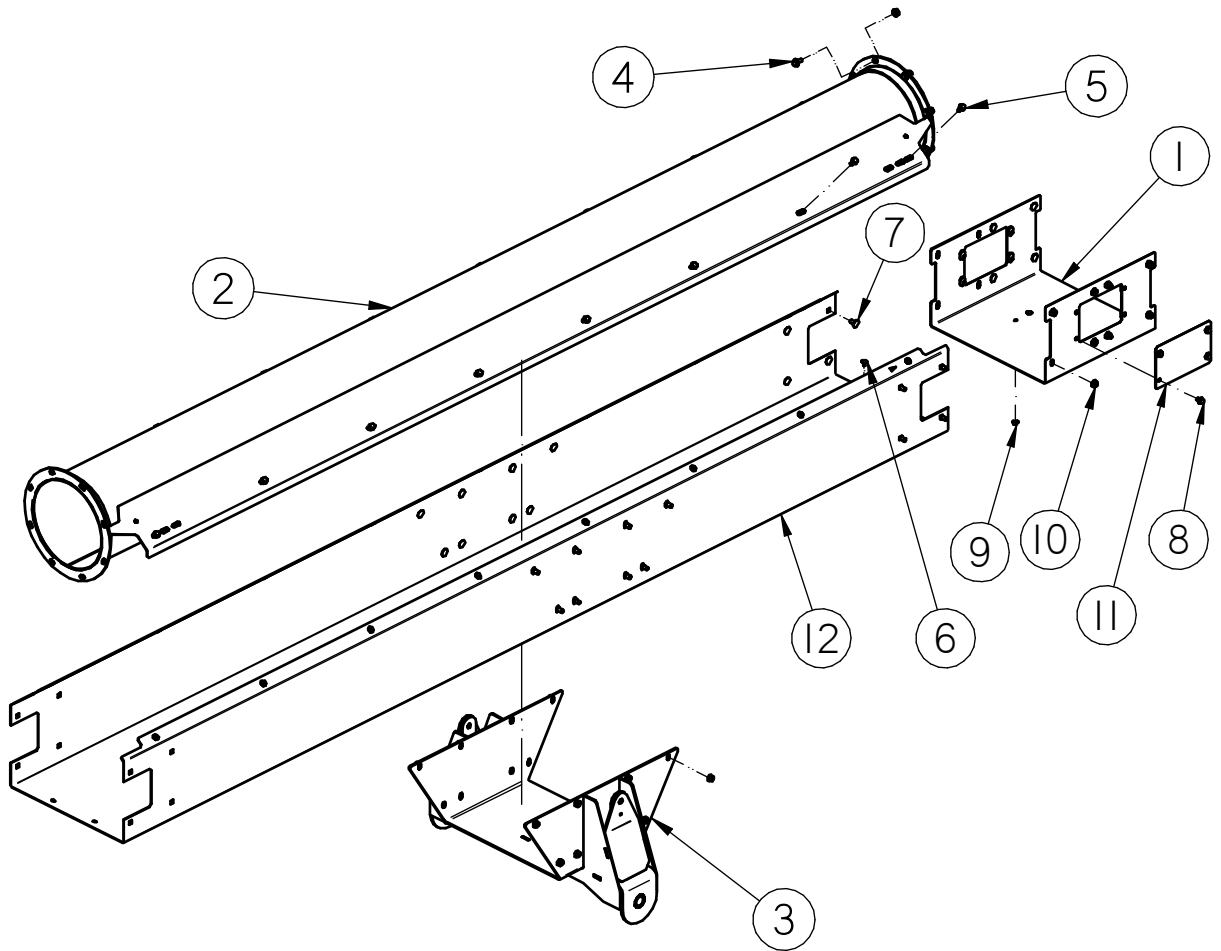


TS3500 BIN FILL CONVEYOR

ASSEMBLY CONVEYOR INLET HALF (13-08-0826 REV A0)

PART #		13-08-0826 REV A0		
Item #	Part #	Description	Qty	See Page
1	05-06-0122	CVR SPLICE RND CNV 10IN	3	
2	05-06-0123	CVR SPLICE INLET RND CNV 10IN	1	
3	05-08-0218	WDMT PAD BL CNVR	1	
4	06-01-0261	BOLT FLG .3125-18 X .500 ZP GR5	12	
5	09-02-0016	LBL ATWRK ATT BELT ALIGN	1	
6	11-02-0153	BELT CNVR CLTS TS3516	1	
7	13-08-0511	ASSY JACK MNT CNVR	1	41
8	13-08-0513	ASSY HITCH BL RND CNVR	1	42
9	13-08-0586	ASSY INLET EXT TS35 BL	1	37
10	13-08-0587	ASSY CNVR 10FT X 16IN MID SECT	1	35
11	13-08-0588	ASSY CNVR 10FT CBL SUPP SECT BL	1	31
12	13-08-0748	ASSY INLET SECT TS35 LG BRG	1	39

ASSEMBLY CONVEYOR 10FT MID SECTION (13-08-0587 REV B0)

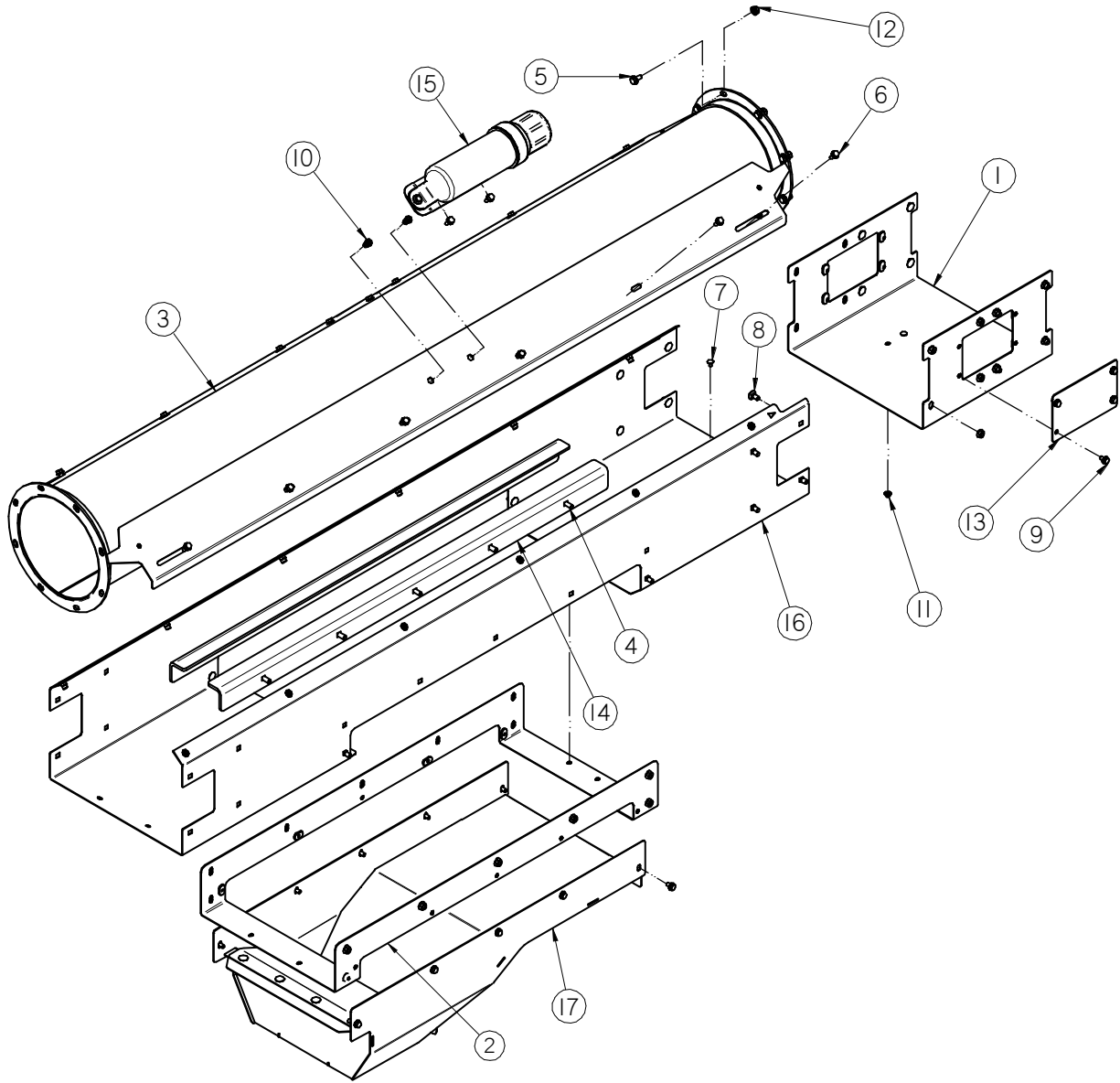


TS3500 BIN FILL CONVEYOR

ASSEMBLY CONVEYOR 10FT MID SECTION (13-08-0587 REV B0)

PART #		13-08-0587 REV B0	
Item #	Part #	Description	Qty
1	05-08-0412	WDMT SPLICE 16IN	1
2	05-08-0509	WDMT TUBE 10IN X 120IN	1
3	05-08-0513	WDMT UNCRG ATTACH LOWER	1
4	06-01-0124	BOLT FLG .375-16 X .750 ZP GR5	8
5	06-01-0138	BOLT FLG .3125-18 X .750 ZP GR5	16
6	06-01-0150	BOLT CRG .250-20 X .500 ZP	4
7	06-01-0153	BOLT CRG .375-16X.750 ZP SHORT NECK	32
8	06-01-0261	BOLT FLG .3125-18 X .500 ZP GR5	8
9	06-03-0013	NUT LOCK FLG .250-20 ZP GR5	4
10	06-03-0014	NUT LOCK FLG .375-16 ZP GR5	40
11	103B9A	PLT SPLICE COVER	2
12	13-05-0440	ASSY 10FT SECT MNT W/RIVETNUTS	1

ASSEMBLY INLET EXTENSION (13-08-0586 REV C3)

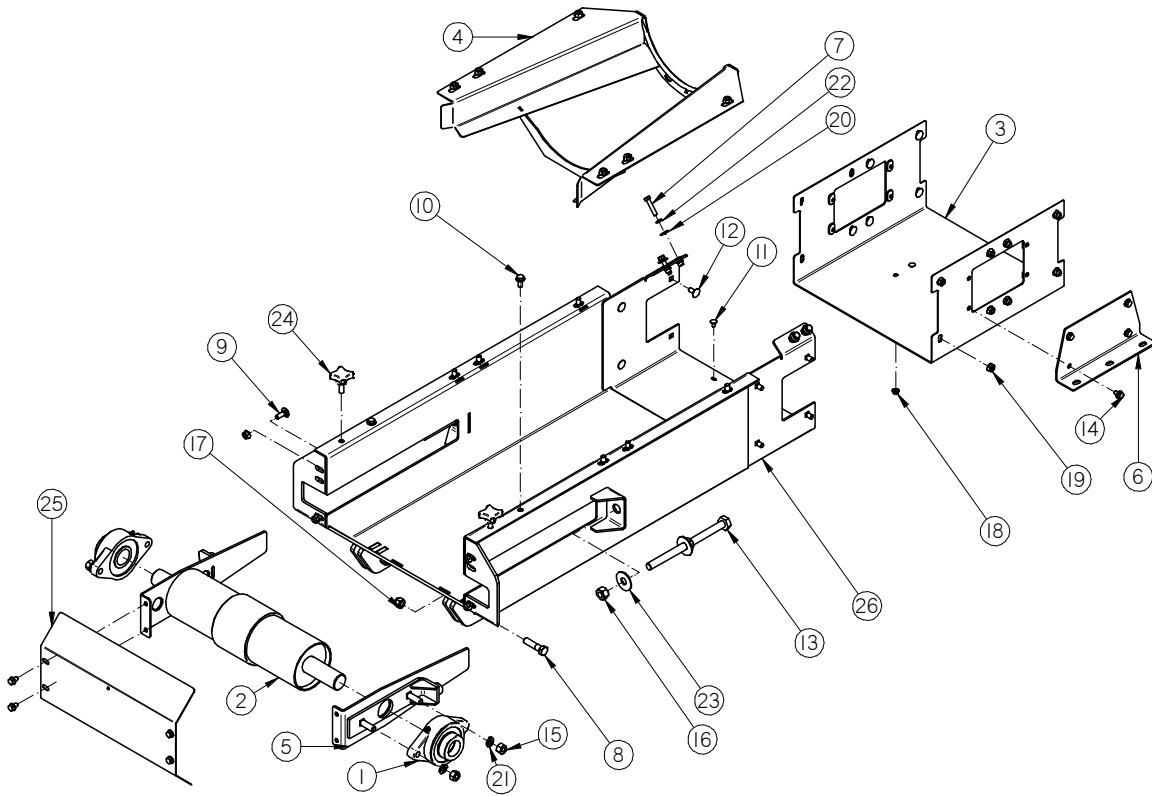


TS3500 BIN FILL CONVEYOR

ASSEMBLY INLET EXTENSION (13-08-0586 REV C3)

PART #		13-05-0586 REV C3		
Item #	Part #	Description	Qty	See Page
1	05-08-0412	WDMT SPLICE 16IN	1	
2	05-08-0480	WDMT ACCESS DOOR 16IN	1	
3	05-08-0507	WDMT TUBE 10IN X 84.86IN	1	
4	06-01-0115	BOLT CRG .375-16 X 1.00 ZP GR5	10	
5	06-01-0124	BOLT FLG .375-16 X .750 ZP GR5	8	
6	06-01-0138	BOLT FLG .3125-18 X .750 ZP GR5	16	
7	06-01-0150	BOLT CRG .250-20 X .500 ZP	8	
8	06-01-0153	BOLT CRG .375-16X.750 ZP SHORT NECK	20	
9	06-01-0261	BOLT FLG .3125-18 X .500 ZP GR5	18	
10	06-02-0092	NUT RIVET .312-18 ZP	4	
11	06-03-0013	NUT LOCK FLG .250-20 ZP GR5	8	
12	06-03-0014	NUT LOCK FLG .375-16 ZP GR5	38	
13	103B9A	PLT SPLICE COVER	2	
14	1055EB	BRACE REINF CLN\OUT	2	
15	13-05-0332	ASSY MANUAL TUBE MNT	1	60
16	13-05-0554	ASSY INLET EXT W/RIVETNUTS	1	
17	13-08-0694	ASSY DOOR TS35 CLN OUT/ACCESS	1	

ASSEMBLY INLET SECTION (13-08-0748 REV A0)



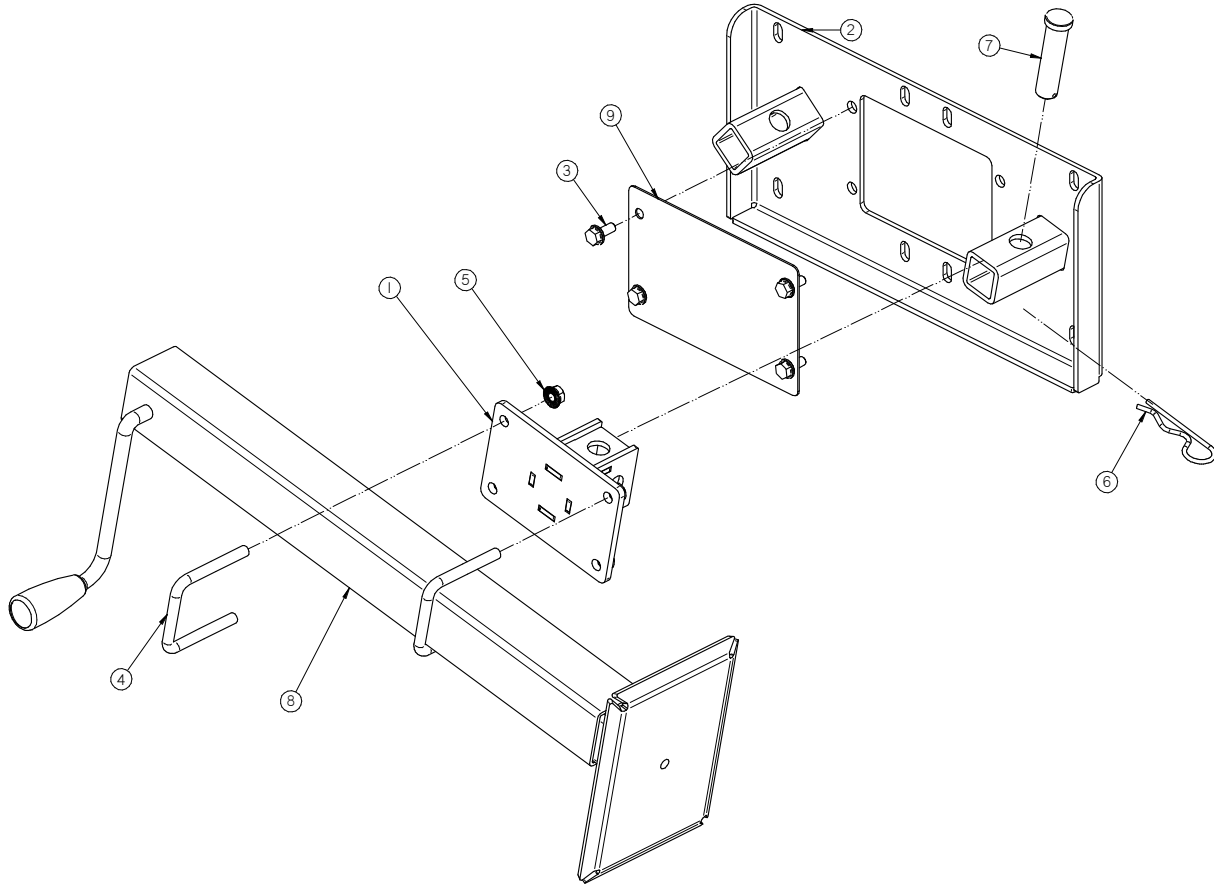
TS3500 BIN FILL CONVEYOR

ASSEMBLY INLET SECTION (13-08-0748 REV A0)

PART #		13-08-0748 REV A0	
Item #	Part #	Description	Qty
1	01-03-0077	BRG FLG MNT 1.500ID 2BOLT ECNTRC	2
2	01-08-0144	PULLEY TAIL 4.50DIA X 15.50W LG BRG	1
3	05-08-0412	WDMT SPLICE 16IN	1
4	05-08-0570	WDMT TAIL TRANS TS35	1
5	05-08-0705	WDMT TAK-UP PLT LG BRG	2
6	05-10-4339	PLT STOP MNT	2
7	06-01-0013	BOLT .313-18 X 1.50 ZP GR5	4
8	06-01-0027	BOLT .500-13 X 2.00 ZP GR5	2
9	06-01-0115	BOLT CRG .375-16 X 1.00 ZP GR5	4
10	06-01-0124	BOLT FLG .375-16 X .750 ZP GR5	2
11	06-01-0150	BOLT CRG .250-20 X .500 ZP	4
12	06-01-0153	BOLT CRG .375-16X.750 ZP SHORT NECK	22
13	06-01-0249	BOLT .625-11 X 9.00 ZP GR5 FTH	2
14	06-01-0261	BOLT FLG .3125-18 X .500 ZP GR5	12
15	06-02-0004	NUT FULL .500-13 ZP GR5	4
16	06-02-0005	NUT FULL .625-11 ZP GR5	4
17	06-03-0004	NUT NYL LOCK .500-13 ZP GR5	2
18	06-03-0013	NUT LOCK FLG .250-20 ZP GR5	4
19	06-03-0014	NUT LOCK FLG .375-16 ZP GR5	28
20	06-04-0002	WSHR LOCK SPLT .313 ZP	4
21	06-04-0004	WSHR LOCK SPLT .500 ZP	4
22	06-05-0003	WSHR FLAT .313 ZP	4
23	06-05-0006	WSHR FLAT .625 ZP	4
24	06-09-0066	KNOB .375 -16 X 1. 4 LUG PLASTIC	2
25	10426C	PLT CVR TAKE-UP 16IN	1
26	13-05-0642	ASSY FRM W/RIVETNUTS TS35 LG BRG	1

TS3500 BIN FILL CONVEYOR

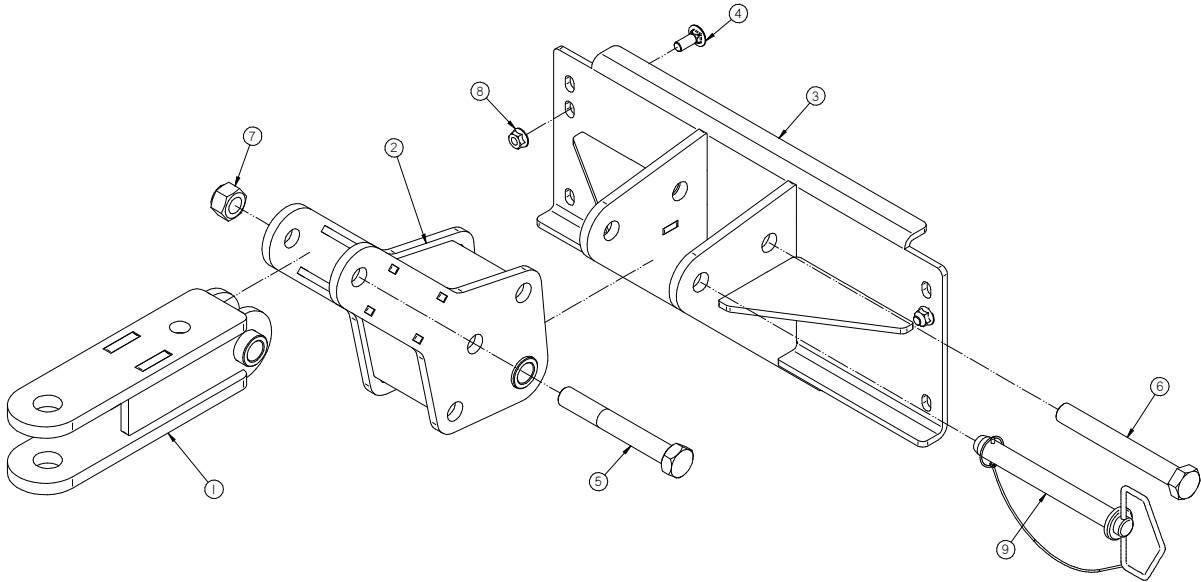
ASSEMBLY JACK MOUNT (13-08-0511 REV A4)



PART #		13-08-0511 REV A4	
Item #	Part #	Description	Qty
1	05-08-0295	WDMT JKSTD U-BLT	1
2	05-08-0431	WDMT JACK MNT	1
3	06-01-0138	BOLT FLG .3125-18 X .750 ZP GR5	4
4	06-01-0263	BOLT U .375-16 X 2.87 X 3.00 ZP SQ	2
5	06-03-0014	NUT LOCK FLG .375-16 ZP GR5	4
6	06-09-0002	PIN CLIP HITCH 3.063 SIZE 9 ZP	1
7	06-09-0095	PIN CLVS .750 X 3.00 ZP	1
8	08-08-0145	TRLR JACK SW 8000LB 15IN	1
9	103B9A	PLT SPLICE COVER	1

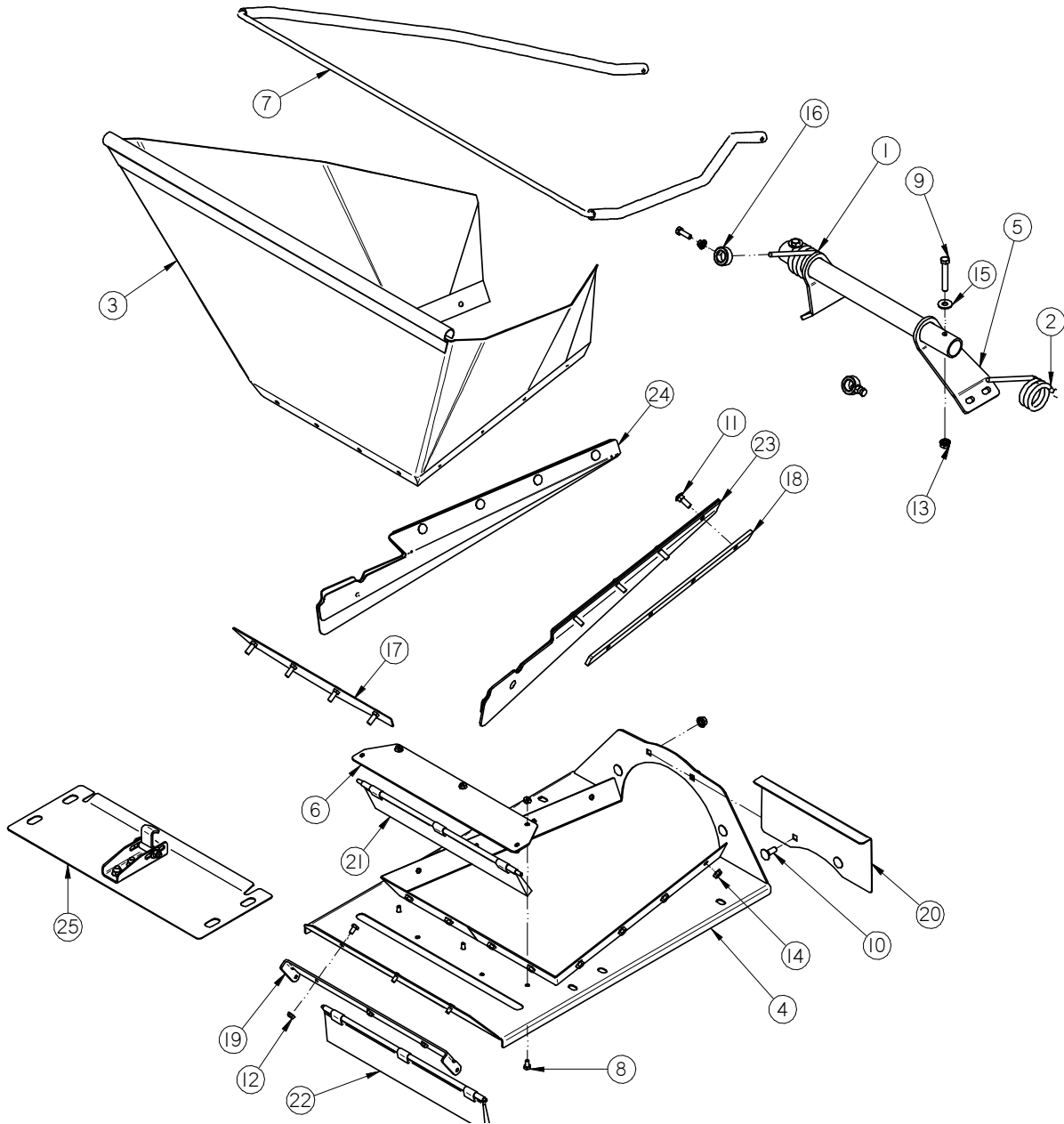
TS3500 BIN FILL CONVEYOR

ASSEMBLY HITCH (13-08-0513 REV A0)



PART #		13-08-0513 REV A0	
Item #	Part #	Description	Qty
1	05-08-0220	WDMT DRAWBAR BL CNVR	1
2	05-08-0309	WDMT HITCH PIVOT	1
3	05-08-0430	WDMT HITCH BL	1
4	06-01-0115	BOLT CRG .375-16 X 1.00 ZP GR5	4
5	06-01-0178	BOLT .750-10 X 5.50 HH ZP GR5	1
6	06-01-0253	BOLT .750-10 X 6.00 YP GR8	1
7	06-02-0029	NUT NYL LOCK .750-10 ZP GR5	2
8	06-03-0014	NUT LOCK FLG .375-16 ZP GR5	4
9	06-09-0062	PIN HITCH .750 X 6.25 LG W-LYNCH	1

ASSEMBLY COLLAPSIBLE INLET LARGE (13-08-0714 REV B2)

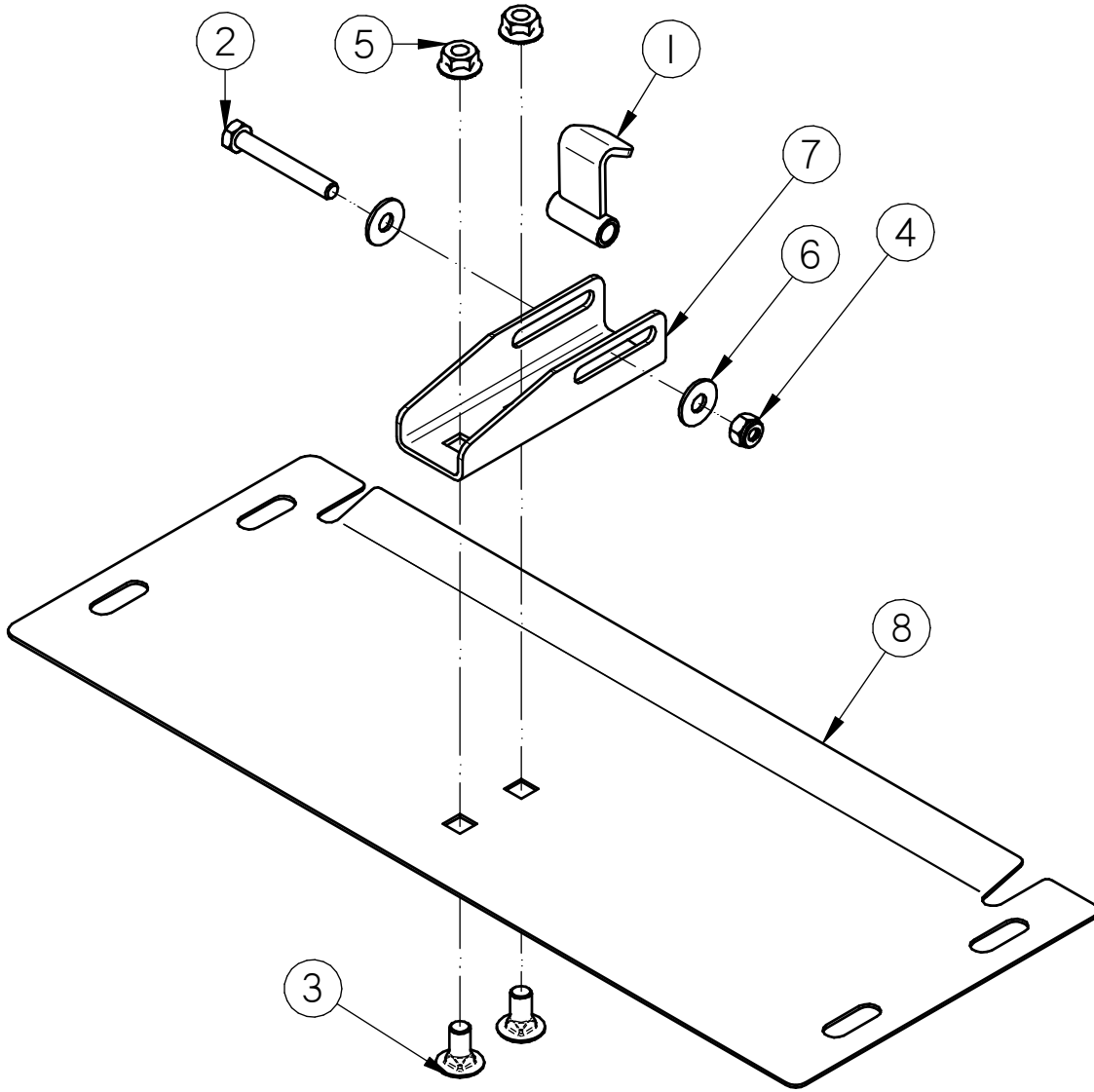


TS3500 BIN FILL CONVEYOR

ASSEMBLY COLLAPSIBLE INLET LARGE (13-08-0714 REV B2)

PART #		13-08-0714 REV B2		
Item #	Part #	Description	Qty	See Page
1	01-04-0061	CLPSBL HOPP SPRING LH	1	
2	01-04-0062	CLPSBL HOPP SPRING RH	1	
3	01-13-0024	CLPSBL TARP TS35 LRG	1	
4	05-08-0437	WDMT INLET PLT CLPSBL	1	
5	05-08-0510	WDMT SPRING ATTACH CLPSBL	1	
6	05-08-0537	WDMT PIVOT BRSH PLT TS35	1	
7	05-08-0689	WDMT FRAME CLPSBL LRG	1	
8	06-01-0004	BOLT .250-20 X .500 ZP GR5	6	
9	06-01-0071	BOLT .375-16 X 2.50 ZP GR5	2	
10	06-01-0115	BOLT CRG .375-16 X 1.00 ZP GR5	4	
11	06-01-0223	BOLT CRG .313-18 X 1.00 ZP GR5	12	
12	06-03-0013	NUT LOCK FLG .250-20 ZP GR5	6	
13	06-03-0014	NUT LOCK FLG .375-16 ZP GR5	6	
14	06-03-0019	NUT LOCK FLG .313-18 ZP GR5	12	
15	06-05-0004	WSHR FLAT .375 ZP	2	
16	06-12-0057	COLLAR SET 1 5/16OD X 13/16ID	2	
17	103C9E	PLT SEAL CLMP REAR	1	
18	103D17	PLT SKIRT SPACER	2	
19	104739	EAR BRUSH MNT	1	
20	1052F4	PLT CLPSBL DFLT TS35	1	
21	13-05-0480	ASSY BRUSH W\CLIPS 15.438	1	
22	13-05-0481	ASSY BRUSH W\CLIPS 16.062	1	
23	13-05-0578	ASSY RH SKIRT CLPSBL TS35	1	
24	13-05-0579	ASSY LH SKIRT CLPSBL TS35	1	
25	13-08-0732	ASSY CLN-OUT DOOR W/LATCHES TS35	1	45

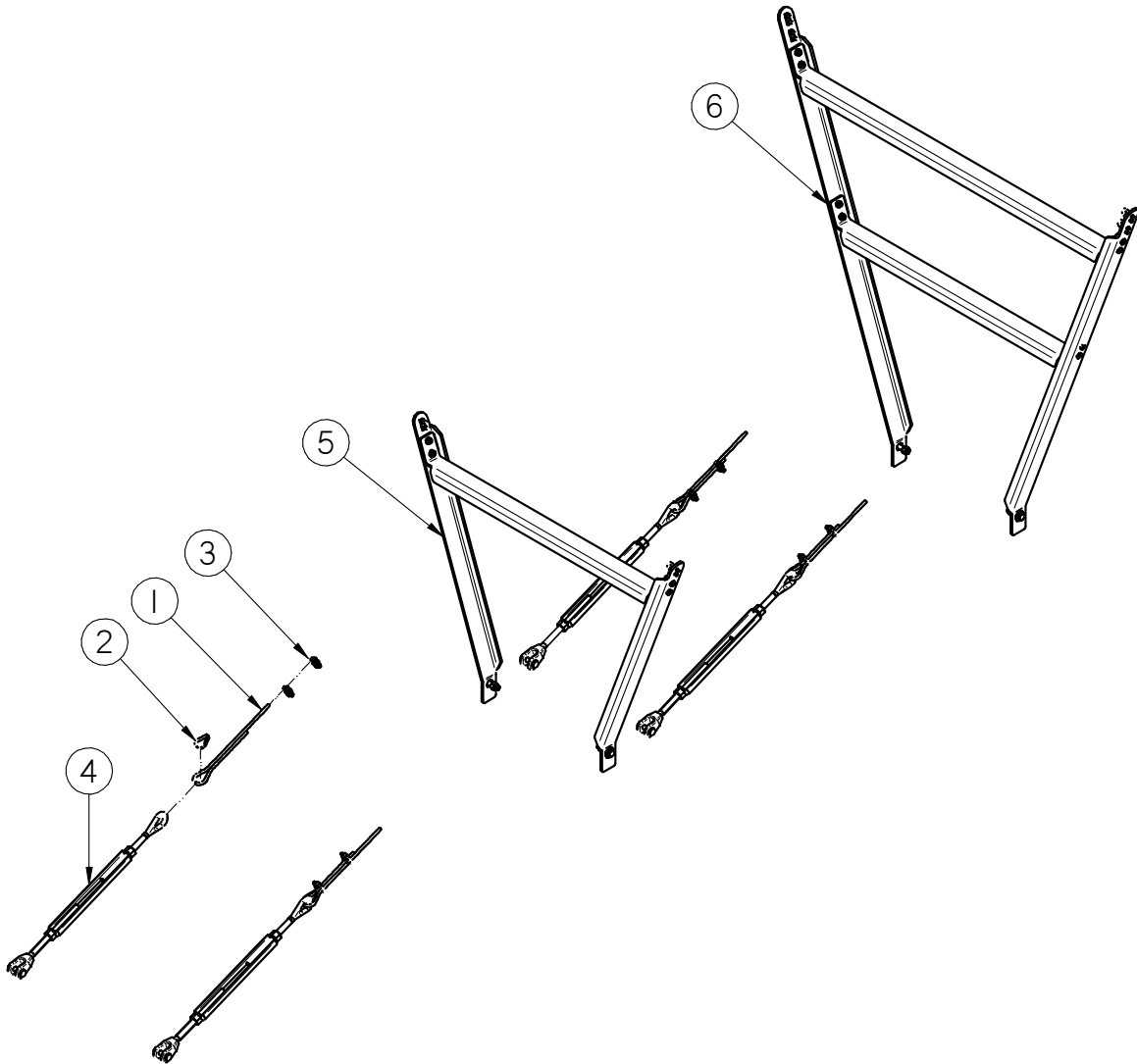
ASSEMBLY CLEANOUT DOOR WITH LATCHES (13-08-0732 REV A2)



PART #		13-08-0732 REV A2	
Item #	Part #	Description	Qty
1	05-08-0441	WDMT LATCH CLPSBL	1
2	06-01-0109	BOLT .313-18 X 2.25 ZP GR5	1
3	06-01-0153	BOLT CRG .375-16X.750 ZP SHORT NECK	2
4	06-03-0002	NUT NYL LOCK .313-18 ZP GR5	1
5	06-03-0014	NUT LOCK FLG .375-16 ZP GR5	2
6	06-05-0003	WSHR FLAT .313 ZP	2
7	105611	PLT LATCH MNT	1
8	105615	COVER CLN\OUT TS35	1

TS3500 BIN FILL CONVEYOR

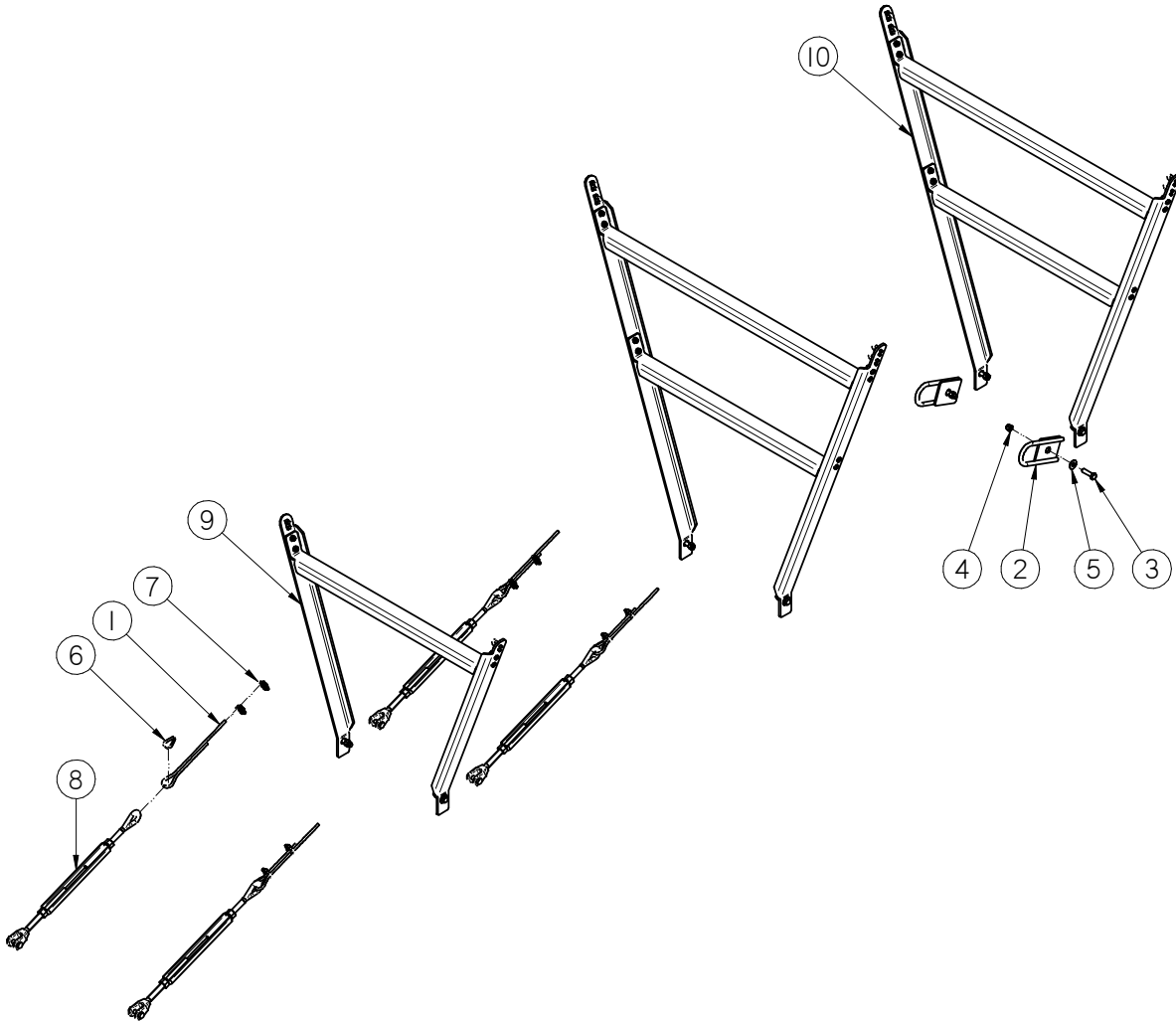
KIT CABLE 55 FT (13-08-0597 REV A0)



PART #		13-08-0597 REV A0		
Item #	Part #	Description	Qty	See Page
1	01-04-0066	WIRE ROPE .313 DIA X 45FT	2	
2	06-07-0023	THIMBLE .250 WIRE ROPE HD	2	
3	06-07-0026	CBL CLIP ROPE .313	4	
4	06-12-0041	TURNBUCKLE 5/8-11 12IN ADJ	2	
5	13-08-0593	ASSY CABLE ATTACH SHORT	1	49
6	13-08-0594	ASSY CABLE ATTACH TALL	1	50

TS3500 BIN FILL CONVEYOR

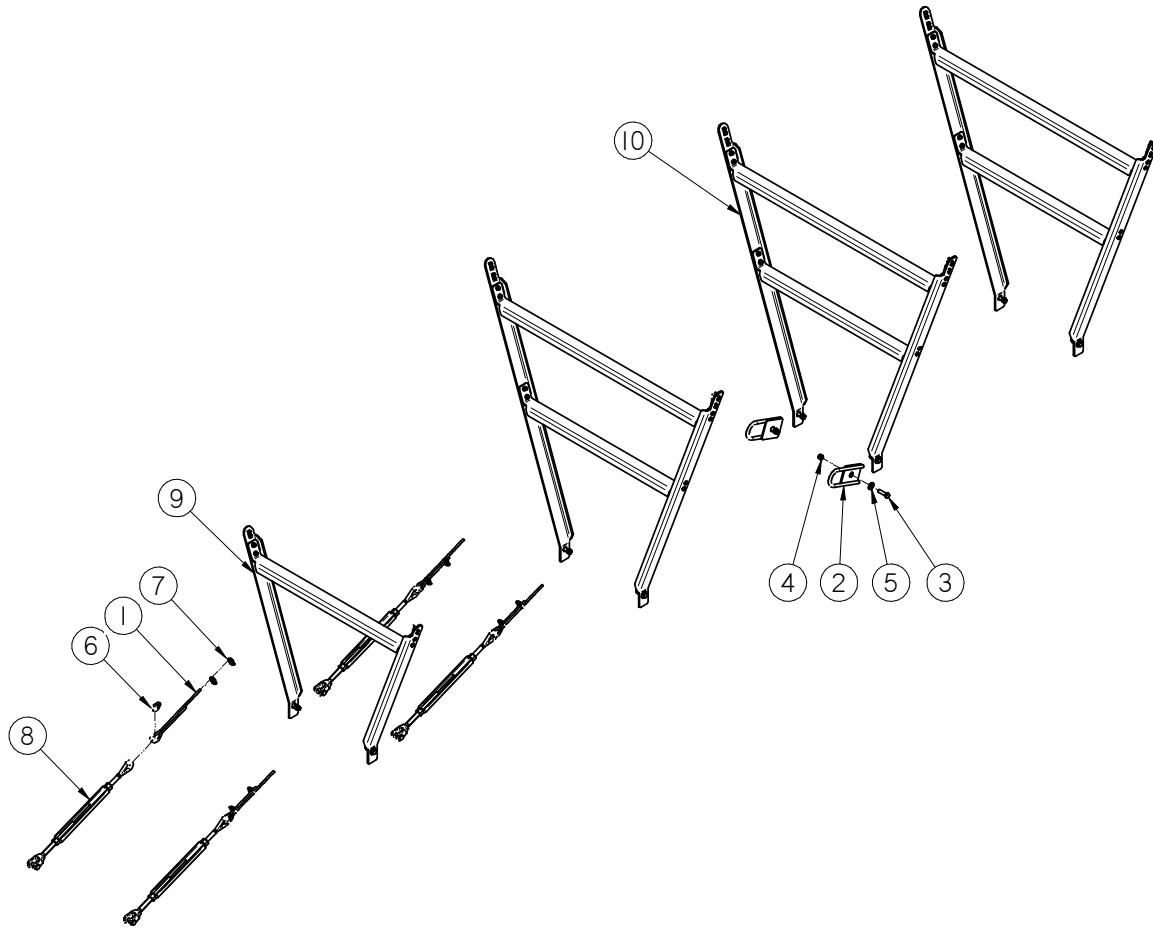
KIT CABLE 65 FT (13-08-0598 REV A0)



PART #		13-08-0598 REV A0		
Item #	Part #	Description	Qty	See Page
1	01-04-0067	WIRE ROPE .313 DIA X 55FT	2	
2	05-08-0428	WDMT SWVL CABLE ATTACH	2	
3	06-01-0054	BOLT .500-13 X 1.75 ZP GR5	2	
4	06-03-0004	NUT NYL LOCK .500-13 ZP GR5	2	
5	06-05-0005	WSHR FLAT .500 ZP	2	
6	06-07-0023	THIMBLE .250 WIRE ROPE HD	2	
7	06-07-0026	CBL CLIP ROPE .313	4	
8	06-12-0041	TURNBUCKLE 5/8-11 12IN ADJ	2	
9	13-08-0593	ASSY CABLE ATTACH SHORT	1	49
10	13-08-0594	ASSY CABLE ATTACH TALL	2	50

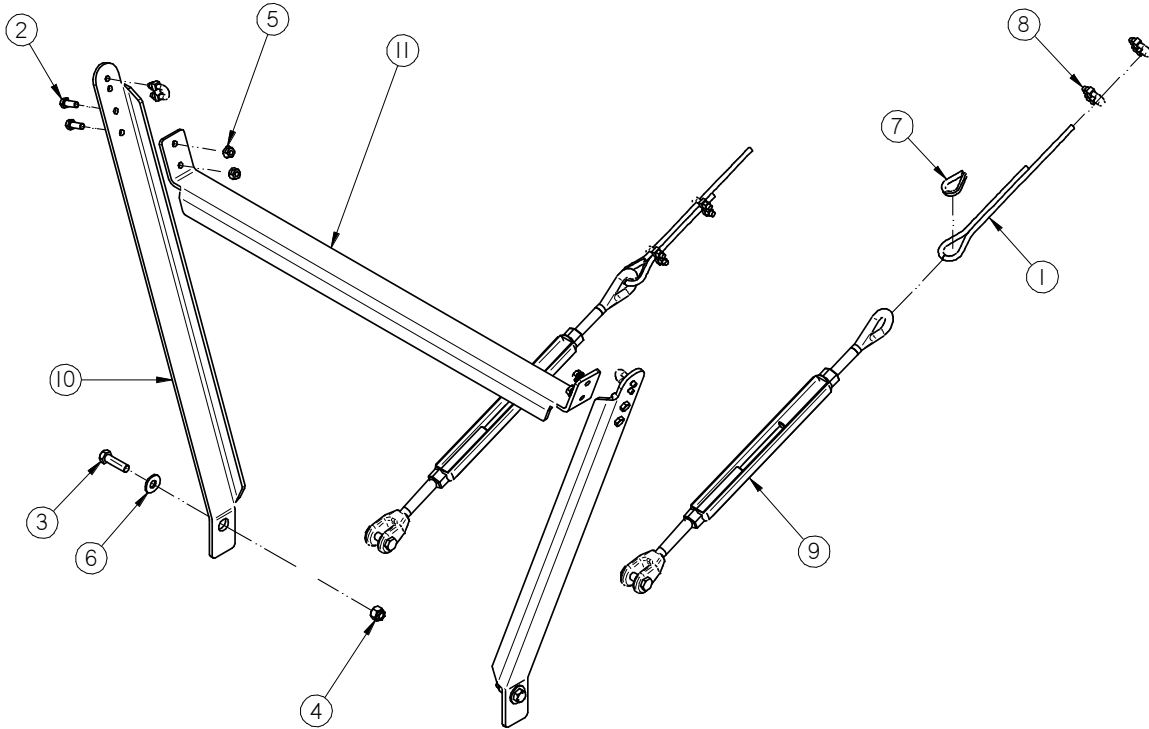
TS3500 BIN FILL CONVEYOR

KIT CABLE 70 FT (13-08-0599 REV A0)



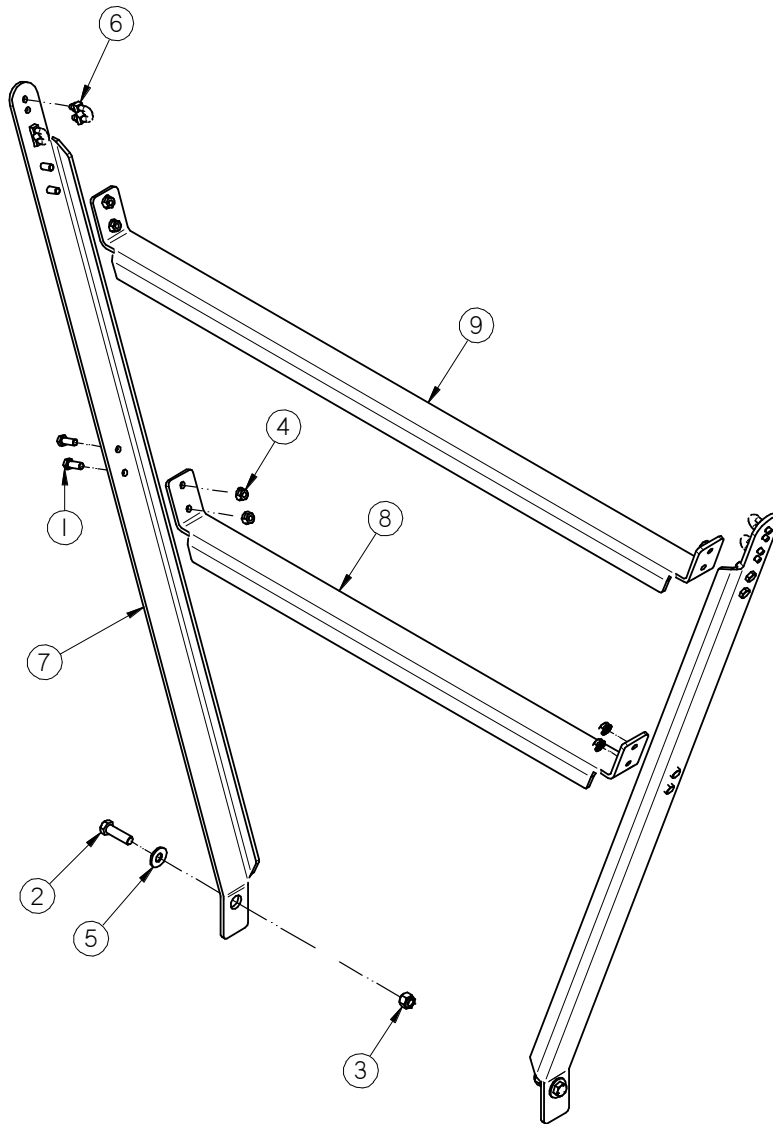
PART #		13-08-0599 REV A0		
Item #	Part #	Description	Qty	See Page
1	01-04-0068	WIRE ROPE .313 DIA X 60FT	2	
2	05-08-0428	WDMT SWVL CABLE ATTACH	2	
3	06-01-0054	BOLT .500-13 X 1.75 ZP GR5	2	
4	06-03-0004	NUT NYL LOCK .500-13 ZP GR5	2	
5	06-05-0005	WSHR FLAT .500 ZP	2	
6	06-07-0023	THIMBLE .250 WIRE ROPE HD	2	
7	06-07-0026	CBL CLIP ROPE .313	4	
8	06-12-0041	TURNBUCKLE 5/8-11 12IN ADJ	2	
9	13-08-0593	ASSY CABLE ATTACH SHORT	1	49
10	13-08-0594	ASSY CABLE ATTACH TALL	3	50

ASSEMBLY CABLE ATTACHMENT SHORT (13-08-0593 REV A0)



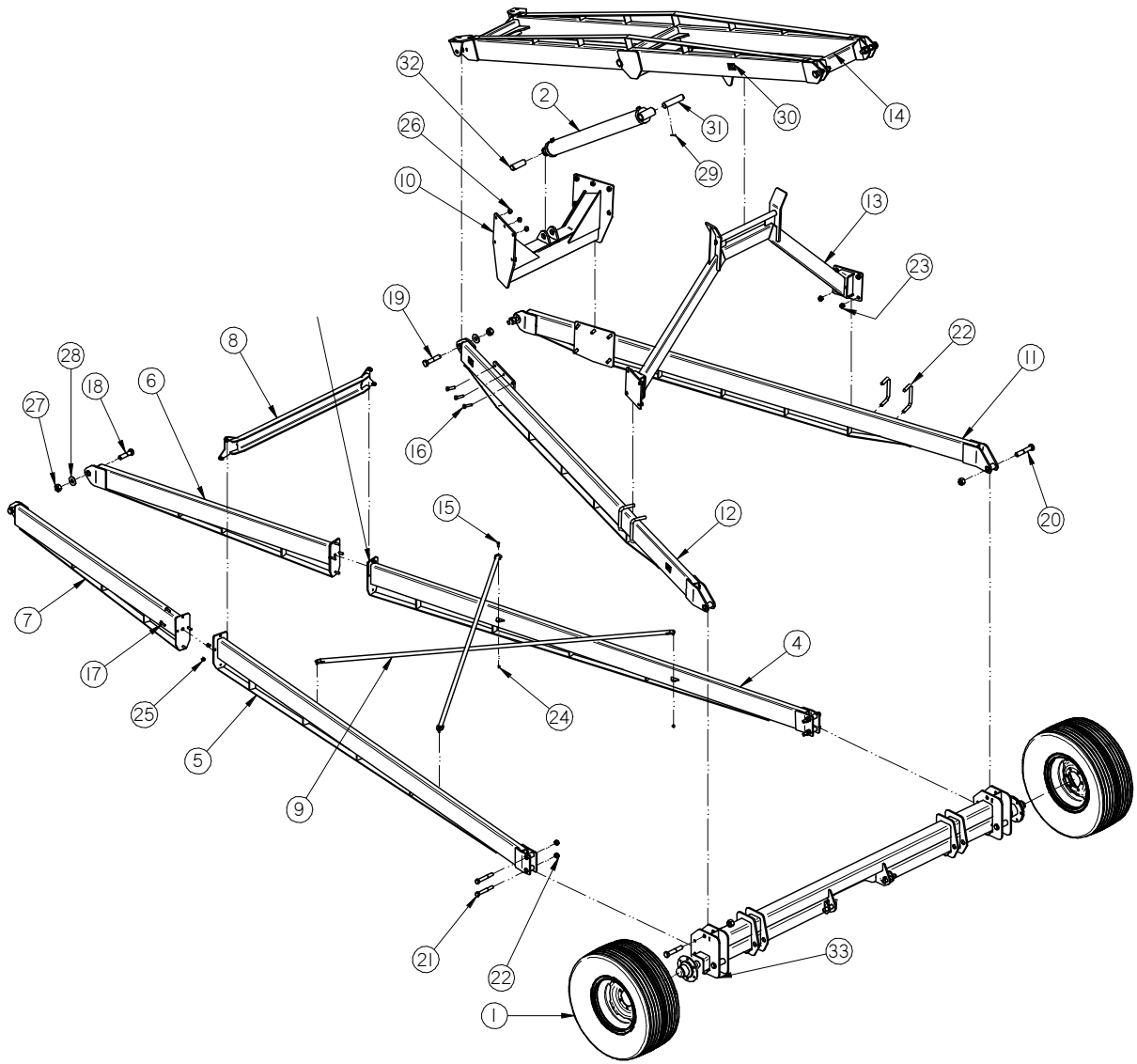
PART #		13-08-0593 REV A0	
Item #	Part #	Description	Qty
1	01-04-0065	WIRE ROPE .313 DIA X 25FT	2
2	06-01-0016	BOLT .375-16 X 1.00 ZP GR5	4
3	06-01-0054	BOLT .500-13 X 1.75 ZP GR5	2
4	06-03-0004	NUT NYL LOCK .500-13 ZP GR5	2
5	06-03-0014	NUT LOCK FLG .375-16 ZP GR5	4
6	06-05-0005	WSHR FLAT .500 ZP	2
7	06-07-0023	THIMBLE .250 WIRE ROPE HD	2
8	06-07-0026	CBL CLIP ROPE .313	6
9	06-12-0041	TURNBUCKLE 5/8-11 12IN ADJ	2
10	103C94	STRAP CABLE UPRIGHT	2
11	104405	STRAP CABLE CROSS	1

ASSEMBLY CABLE ATTACHMENT TALL (13-08-0594 REV A0)



PART #		13-08-0594 REV A0	
Item #	Part #	Description	Qty
1	06-01-0016	BOLT .375-16 X 1.00 ZP GR5	8
2	06-01-0054	BOLT .500-13 X 1.75 ZP GR5	2
3	06-03-0004	NUT NYL LOCK .500-13 ZP GR5	2
4	06-03-0014	NUT LOCK FLG .375-16 ZP GR5	8
5	06-05-0005	WSHR FLAT .500 ZP	2
6	06-07-0026	CBL CLIP ROPE .313	4
7	103D39	STRAP CABLE UPRIGHT TALL	2
8	104405	STRAP CABLE CROSS	1
9	104406	STRAP CABLE CROSS LONG	1

ASSEMBLY UNDERCARRIAGE (13-08-0371 REV A4)

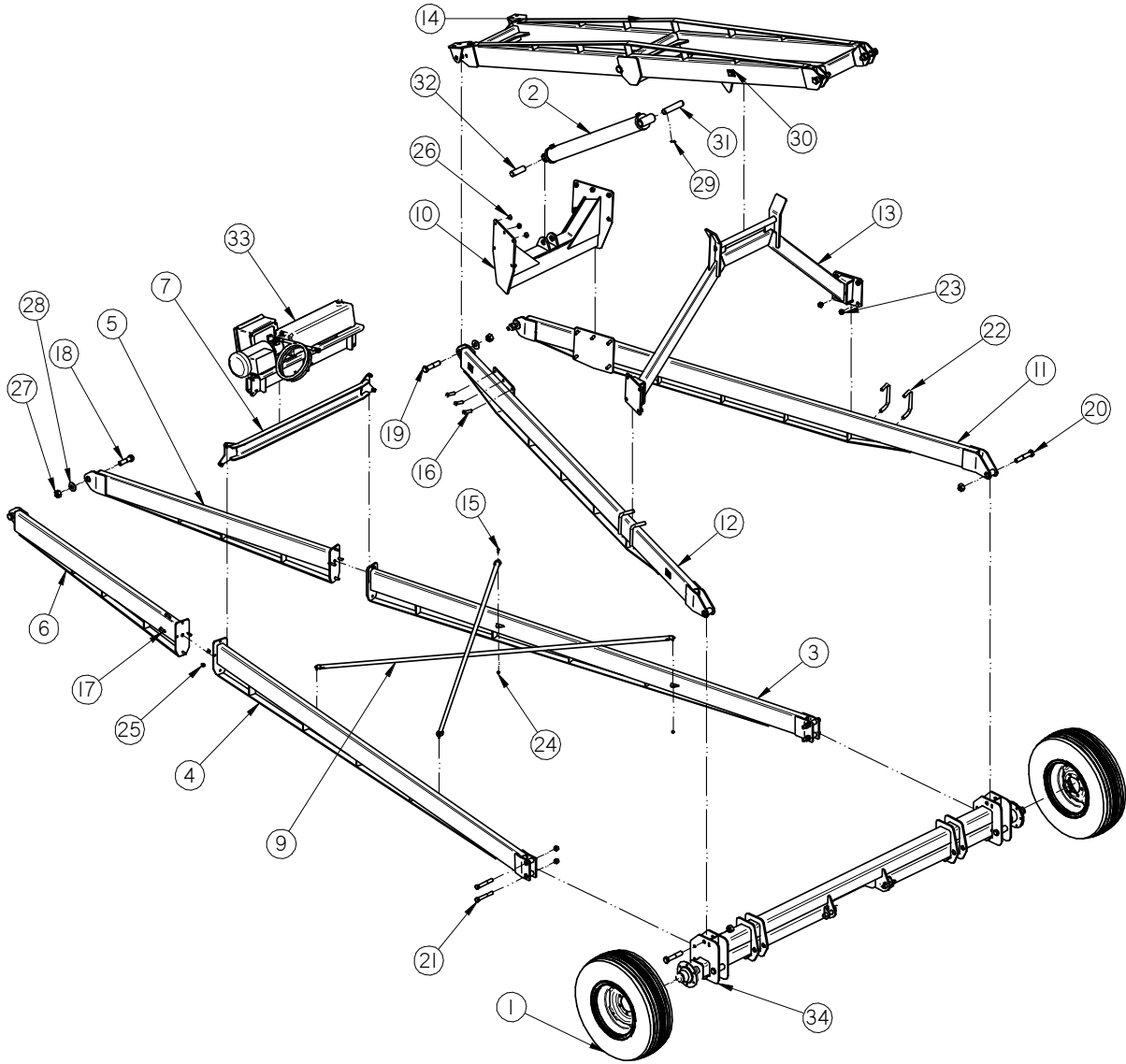


TS3500 BIN FILL CONVEYOR

ASSEMBLY UNDERCARRIAGE (13-08-0371 REV A4)

PART #		13-08-0371 REV A4		
Item #	Part #	Description	Qty	See Page
1	01-06-0096	WHL ASSY 11L/15 - 15X10 6HL AG TYPE	2	
2	03-17-0089	CYL HYD WELD 36IN STRK 4IN ID	1	
3	03-17-0089	CYL HYD WELD 36IN STRK 4IN ID	1	
4	05-08-0226	WDMT TR ARM RH	1	
5	05-08-0227	WDMT TR ARM LH	1	
6	05-08-0228	WDMT TR ARM FRNT RH	1	
7	05-08-0229	WDMT TR ARM FRNT LH	1	
8	05-08-0230	WDMT TR ARM FRNT LH	1	
9	05-08-0253	WDMT CROSS BRACE BL CNVR	2	
10	05-08-0305	WDMT CYL MT	1	
11	05-08-0306	WDMT HINGE RH	1	
12	05-08-0307	WDMT HINGE LH	1	
13	05-08-0308	WDMT HINGE SUPP	1	
14	05-08-0442	WDMT HINGE UPPER DBL EAR BL	1	
15	06-01-0016	BOLT .375-16 X 1.00 ZP GR5	4	
16	06-01-0032	BOLT .625-11 X 2.00 ZP GR5	10	
17	06-01-0054	BOLT .500-13 X 1.75 ZP GR5	8	
18	06-01-0166	BOLT 1.00-8 X 4.00 ZP G8	2	
19	06-01-0167	BOLT 1.00-8 X 5.00 ZP G8	4	
20	06-01-0168	BOLT 1.00-8 X 5.50 ZP G8	2	
21	06-01-0178	BOLT .750-10 X 5.50 HH ZP GR5	4	
22	06-01-0260	BOLT U .750-10 X 6.81 X 3.75 ZP SQ	4	
23	06-02-0029	NUT NYL LOCK .750-10 ZP GR5	12	
24	06-03-0003	NUT NYL LOCK .375-16 ZP GR5	4	
25	06-03-0004	NUT NYL LOCK .500-13 ZP GR5	8	
26	06-03-0005	NUT NYL LOCK .625-11 ZP	10	
27	06-03-0028	NUT NYL LOCK 1.00-8 ZP GR5	8	
28	06-05-0010	WSHR FLAT 1.00 ZP	6	
29	06-09-0088	PIN CTR .125 X 2.00 ZP	4	
30	09-02-0015	ATWRK LBL DANGER PINCH POINT	6	
31	102922	PIN CYL UPPER BL CNVR	1	
32	102923	PIN CYL LOWER BL CNVR	1	
33	13-08-0423	ASSY AXLE EXTENDED BL	1	55

ASSEMBLY UNDERCARRIAGE WITH POWER PACK (13-08-0527 REV A2)



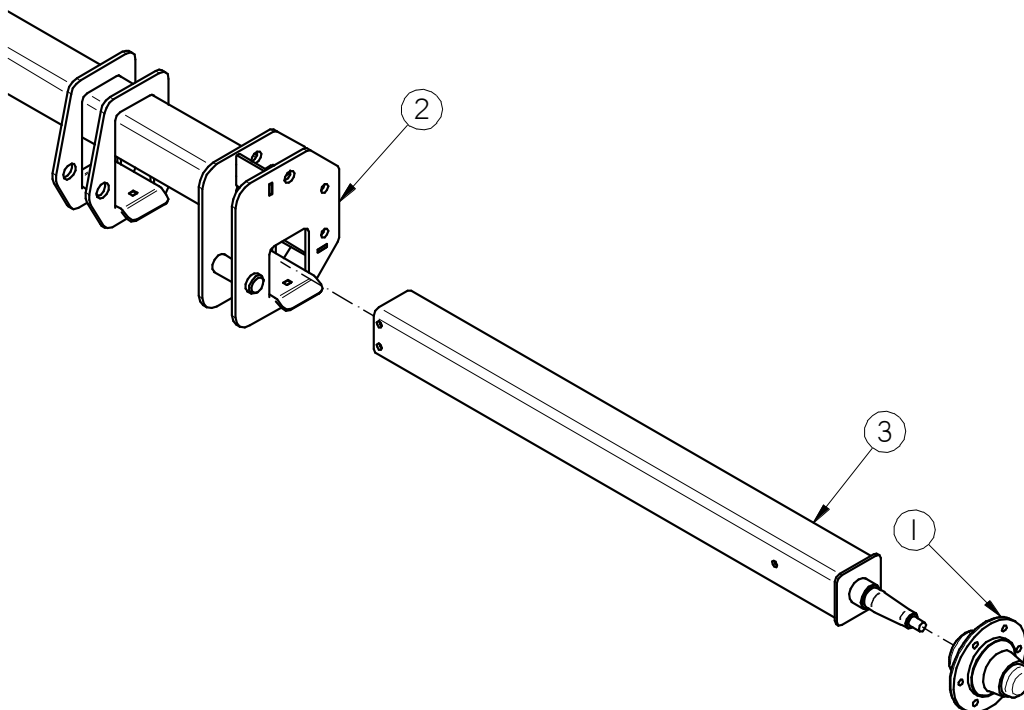
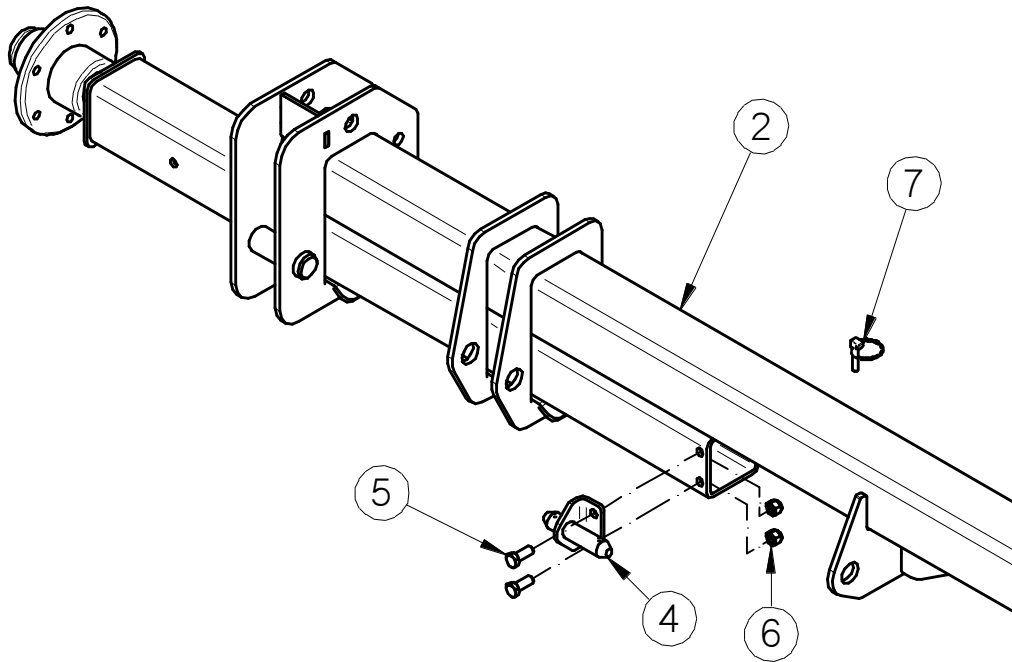
TS3500 BIN FILL CONVEYOR

ASSEMBLY UNDERCARRIAGE WITH POWER PACK (13-08-0527 REV A2)

PART #		13-08-0527 REV A2		
Item #	Part #	Description	Qty	See Page
1	01-06-0096	WHL ASSY 11L/15 - 15X10 6HL AG TYPE	2	
2	03-17-0089	CYL HYD WELD 36IN STRK 4IN ID	1	
3	05-03-1567	WDMT CNVR SPOUT TS3500	1	
4	05-08-0226	WDMT TR ARM RH	1	
5	05-08-0227	WDMT TR ARM LH	1	
6	05-08-0228	WDMT TR ARM FRNT RH	1	
7	05-08-0229	WDMT TR ARM FRNT LH	1	
8	05-08-0230	WDMT CROSS BRACE	1	
9	05-08-0253	WDMT CROSS BRACE BL CNVR	2	
10	05-08-0305	WDMT CYL MT	1	
11	05-08-0306	WDMT HINGE RH	1	
12	05-08-0307	WDMT HINGE LH	1	
13	05-08-0308	WDMT HINGE SUPP	1	
14	05-08-0442	WDMT HINGE UPPER DBL EAR BL	1	
15	06-01-0016	BOLT .375-16 X 1.00 ZP GR5	4	
16	06-01-0032	BOLT .625-11 X 2.00 ZP GR5	10	
17	06-01-0054	BOLT .500-13 X 1.75 ZP GR5	8	
18	06-01-0166	BOLT 1.00-8 X 4.00 ZP G8	2	
19	06-01-0167	BOLT 1.00-8 X 5.00 ZP G8	4	
20	06-01-0168	BOLT 1.00-8 X 5.50 ZP G8	2	
21	06-01-0178	BOLT .750-10 X 5.50 HH ZP GR5	4	
22	06-01-0260	BOLT U .750-10 X 6.81 X 3.75 ZP SQ	4	
23	06-02-0029	NUT NYL LOCK .750-10 ZP GR5	12	
24	06-03-0003	NUT NYL LOCK .375-16 ZP GR5	4	
25	06-03-0004	NUT NYL LOCK .500-13 ZP GR5	8	
26	06-03-0005	NUT NYL LOCK .625-11 ZP	10	
27	06-03-0028	NUT NYL LOCK 1.00-8 ZP GR5	8	
28	06-05-0010	WSHR FLAT 1.00 ZP	6	
29	06-09-0088	PIN CTTR .125 X 2.00 ZP	4	
30	09-02-0015	ATWRK LBL DANGER PINCH POINT	6	
31	102922	PIN CYL UPPER BL CNVR	1	
32	102923	PIN CYL LOWER BL CNVR	1	
33	13-08-0376	ASSY ELEC PWR PK BL CNVR	1	57
34	13-08-0423	ASSY AXLE EXTENDED BL	1	55



ASSEMBLY EXTENDED AXLE (13-08-0423 REV A0)

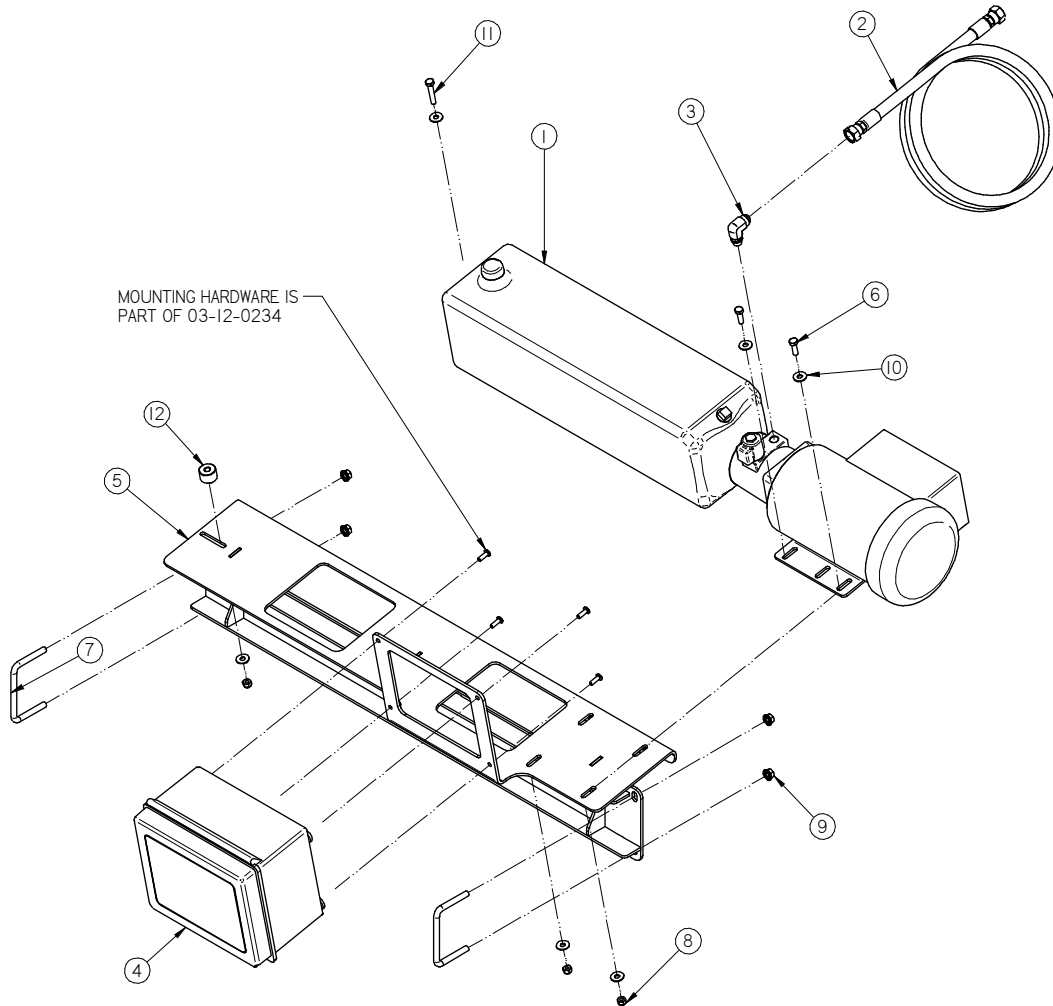


TS3500 BIN FILL CONVEYOR

ASSEMBLY EXTENDED AXLE (13-08-0423 REV A0)

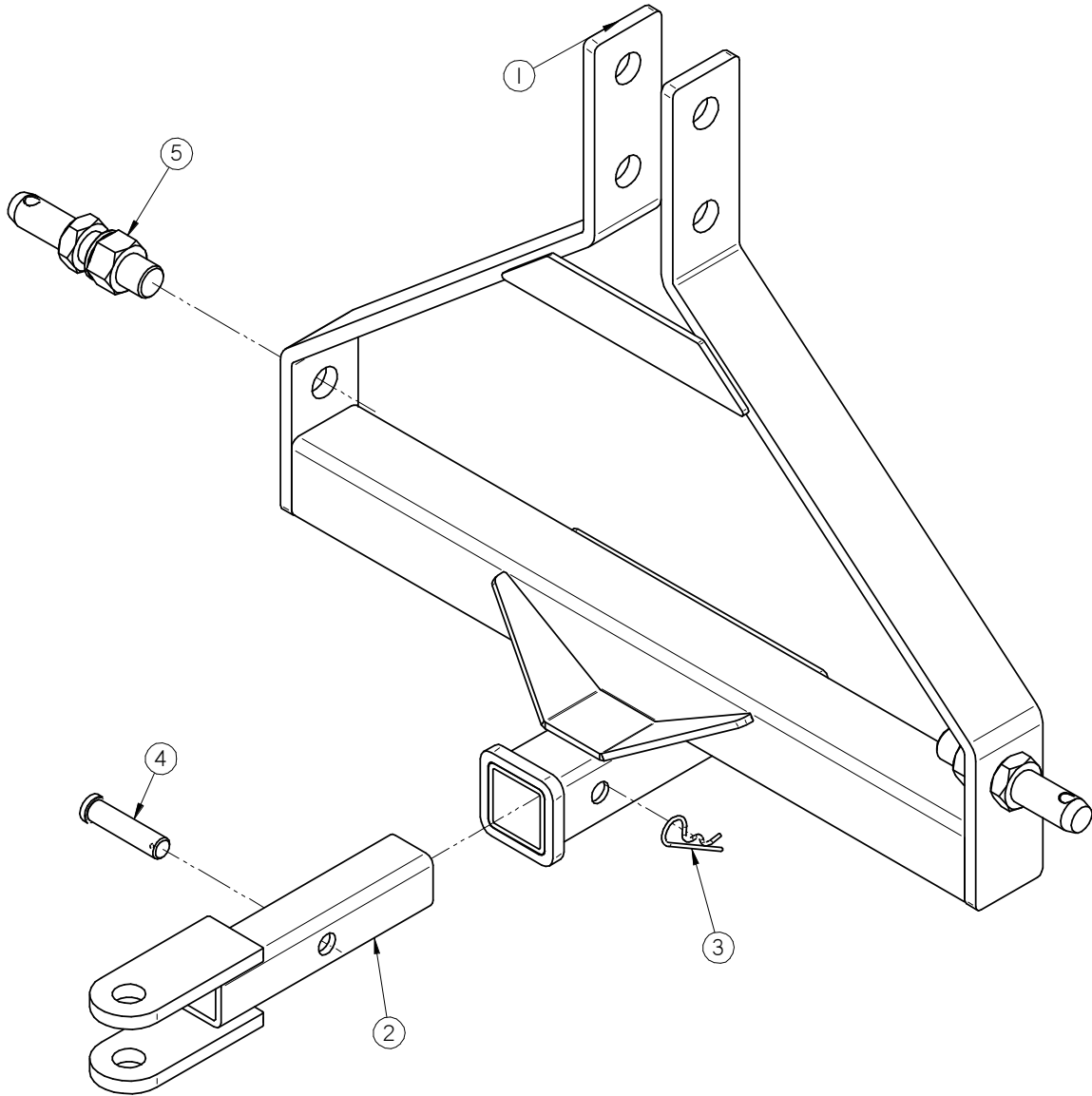
PART #		13-08-0423 REEV A0	
Item #	Part #	Description	Qty
1	01-06-0140	AXLE HUB 3500# 6 ON 6BC	2
2	05-08-0299	WDMT AXLE EXT BL	1
3	05-08-0300	WDMT AXLE STUB BL	2
4	05-08-0304	WDMT AXLE LOCK	2
5	06-01-0080	BOLT .500-13 X 1.25 ZP GR5	4
6	06-03-0004	NUT NYL LOCK .500-13 ZP GR5	4
7	06-09-0101	PIN LYNCH .312OD X 1.250 LG STD	2

ASSEMBLY POWER PACK (13-08-0376 REV A4)



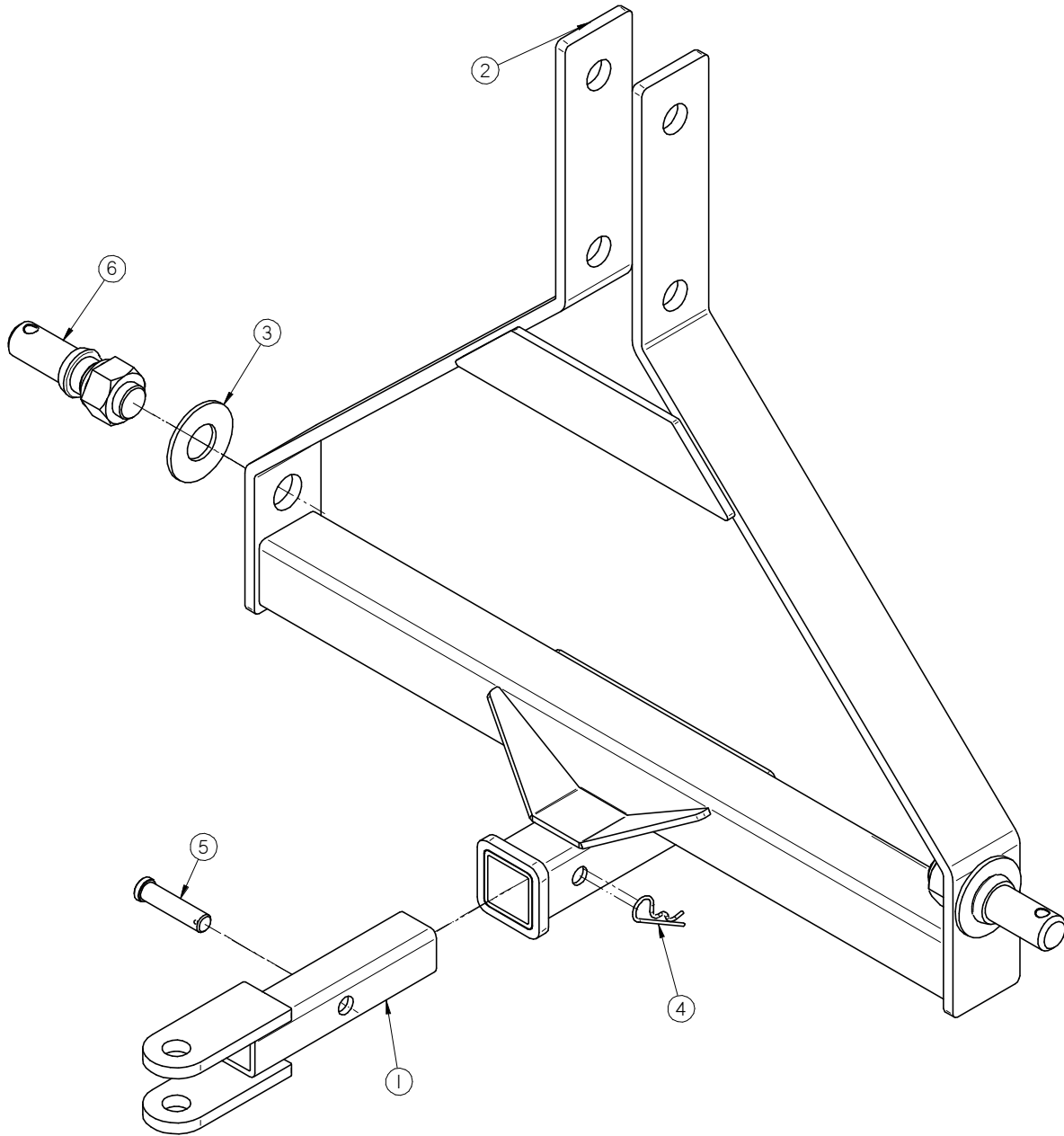
PART #		13-08-0371 REV A4	
Item #	Part #	Description	Qty
1	01-01-0164	HYD POWER PACK 2HP 1.0GPM 3000PSI	1
2	02-03-0057	HHA .375ID 025.0FT -08FJX -08FJX	1
3	02-06-0065	FTTG HYD 90 DEG 8MJ-6MOR	1
4	03-12-0234	PNL CNTL BIN FILL CNVR HYD PWR PACK	1
5	05-08-0264	WDMT PWR PK MNT BL CNVR	1
6	06-01-0012	BOLT .313-18 X 1.00 ZP GR5	4
7	06-01-0202	BOLT U .375-16 X 4.00 X 2.625 ZP5	2
8	06-03-0002	NUT NYL LOCK .313-18 ZP GR5	5
9	06-03-0014	NUT LOCK FLG .375-16 ZP GR5	4
10	06-05-0003	WSHR FLAT .313 ZP	10
11	06-06-0013	BOLT .313-18 X 1.75 ZP GR5	1
12	103E34	SPACER RES PWR PK	1

KIT 3 POINT HITCH CAT II (13-10-0037 REV A1)



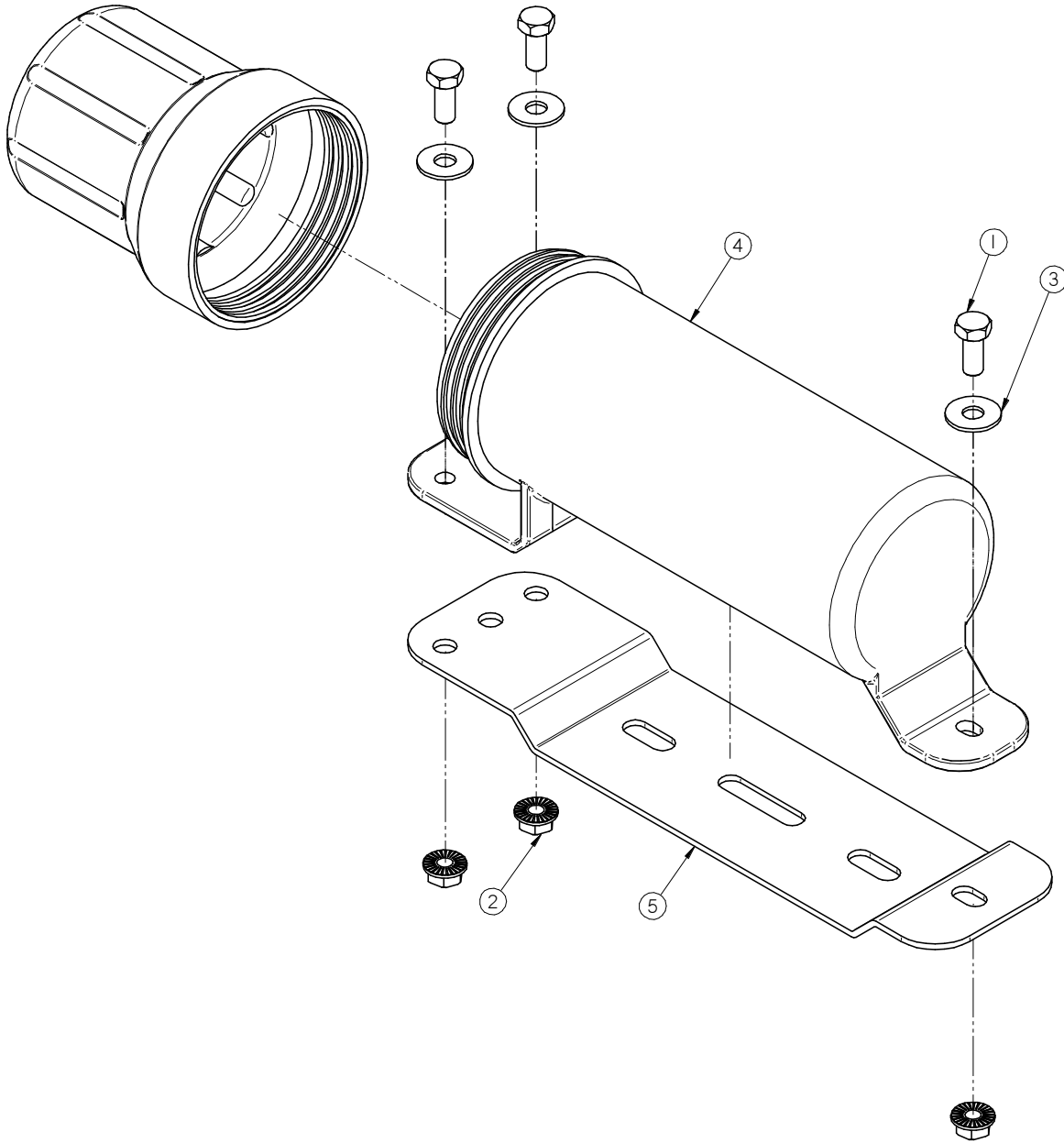
PART #		13-10-0037 REV A1	
Item #	Part #	Description	Qty
1	05-08-0296	WDMT 3P HITCH CAT II	1
2	05-08-0297	WDMT RECV HITCH 3P	1
3	06-09-0039	PIN CLIP HITCH 2.625 #11 1/8 IN ZP	1
4	06-09-0093	PIN LIFT ARM CAT II	2
5	06-09-0095	PIN CLVS .750 X 3.00 ZP	1

KIT 3 POINT HITCH CAT III (13-10-0038 REV A1)



PART #		13-10-0037 REV A1	
Item #	Part #	Description	Qty
1	05-08-0297	WDMT REC V HITCH 3P	1
2	05-08-0301	WDMT 3P HITCH CAT III	1
3	06-05-0028	WSHR FLAT 1.375 YZP	2
4	06-09-0039	PIN CLIP HITCH 2.625 #11 1/8 IN ZP	1
5	06-09-0095	PIN CLVS .750 X 3.00 ZP	1
6	06-09-0096	PIN LIFT ARM CAT III	2

ASSEMBLY MANUAL TUBE (13-05-0332 REV A0)



PART #		13-05-0332 REV A0	
Item #	Part #	Description	Qty
1	06-01-0010	BOLT .313-18 X .750 ZP GR5	3
2	06-03-0019	NUT LOCK FLG .313-18 ZP GR5	3
3	06-05-0011	WSHR FLAT .313 X .875OD SS 18-8	3
4	08-07-0050	HOLDER MANUAL 3.25 DIA	1
5	103980	PLT MANUAL MOUNT	1

TS3500 BIN FILL CONVEYOR

DECAL PACKAGE TS35 CONVEYOR (13-05-0353 REV A0)

PART #		13-05-0353 REV A0	
Item #	Part #	Description	Qty
1	09-01-0003	ATWK LBL MADE IN USA YEL 2.50X2.50	2
2	09-01-0043	ATWK LBL USC 22.00 X 5.75 PRO-CUT	2
3	09-02-0001	ATWK LBL DANGER FINGERS	1
4	09-02-0002	ATWK LBL DANGER GRD	1
5	09-02-0006	ATWK LBL CAUTION SAFETY	1
6	09-02-0007	ATWK LBL DANGER POWER LINES	1
7	09-02-0008	ATWK LBL DANGER UPENDING HAZARD	2
8	09-02-0009	ATWK LBL WARNING ROTATING PARTS	1
9	09-02-0010	ATWK LBL DANGER ELECTROCUTION	1
10	09-02-0011	ATWK LBL WARNING MOVING PART	3
11	09-02-0012	ATWK LBL DANGER MISSING SHIELD	1

TS3500 BIN FILL CONVEYOR

INDEX BY PART NUMBER

PART #	REVISION	DESCRIPTION	PAGE #
		GENERIC TS35 BIN FILL CONVEYOR	15
		MOTORS	24
13-05-0332	A0	ASSY MANUAL TUBE MNT	60
13-05-0353	A0	DECAL PKG TS CNVRS	61
13-08-0371	A4	ASSY CNVR UNDCRG S3000 BL	51
13-08-0376	A4	ASSY ELEC PWR PK BL CNVR	57
13-08-0423	A0	ASSY AXLE EXTENDED BL	55
13-08-0511	A4	ASSY JACK MNT CNVR	41
13-08-0513	A0	ASSY HITCH BL RND CNVR	42
13-08-0527	A2	ASSY UNDCRG PWR PK TS35 BL	53
13-08-0586	C3	ASSY INLET EXT TS35 BL	37
13-08-0587	B0	ASSY CNVR 10FT X 16IN MID SECT	35
13-08-0588	B0	ASSY CNVR 10FT CBL SUPP SECT BL	31
13-08-0589	B0	ASSY CNVR 10FT X 16IN MNT SECT BL	29
13-08-0591	A1	ASSY 5FT MID BL TS35	27
13-08-0592	B0	ASSY CNVR 10FT X 16IN MID SECT	30
13-08-0593	A0	ASSY CABLE ATTACH SHORT	49
13-08-0594	A0	ASSY CABLE ATTACH TALL	50
13-08-0595	B0	ASSY CNVR 10FT X 16IN SECT BL	32
13-08-0596	B0	ASSY 5FT MID BL TS35	25
13-08-0597	A0	ASSY CABLE KIT TS3555	46
13-08-0598	A0	ASSY CABLE KIT TS3565	47
13-08-0599	A0	ASSY CABLE KIT TS3570	48
13-08-0714	B2	ASSY CLPSBL INLET LRG TS35	43
13-08-0732	A2	ASSY CLN-OUT DOOR W/LATCHES TS35	45
13-08-0748	A0	ASSY INLET SECT TS35 LG BRG	39
13-08-0791	B0	ASSY HD SECT TS35 BL LG BRG	19
13-08-0792	B0	KIT DRV 10HP TS35 BL LG BRG	23
13-08-0793	A0	ASSY TRACKING PLT HD LG BRG	22
13-08-0826	A0	ASSY CNVR INLET HALF TS35BL	33
13-08-0827	A1	ASSY CNVR HD HALF TS3555	16
13-08-0828	A1	ASSY CNVR HD HALF TS3565	17
13-08-0829	A1	ASSY CNVR HD HALF TS3570	18
13-10-0037	A0	KIT 3P HITCH CAT II	58
13-10-0038	A1	KIT 3P HITCH CAT III	59

TS3500 BIN FILL CONVEYOR

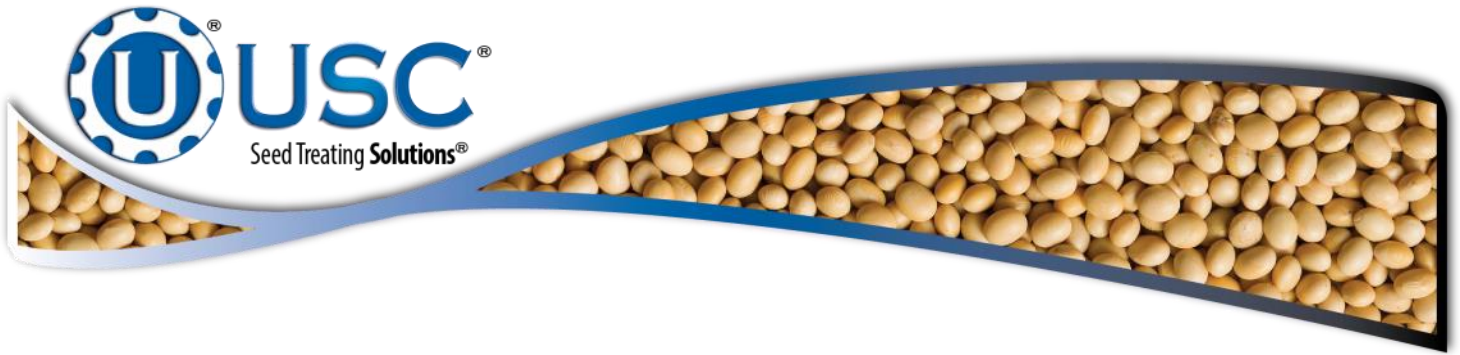
NOTES

SECTION H USC LIMITED WARRANTY

USC, LLC, (Manufacturer) warrants its seed treating equipment as follows:

1. **Limited Warranty:** Manufacturer warrants that the Products sold hereunder will be free from defects in material and workmanship for a period of 18 months from date of shipment. If the Products do not conform to this Limited Warranty during the warranty period, Buyer shall notify Manufacturer in writing of the claimed defects and demonstrate to Manufacturer satisfaction that said defects are covered by this Limited Warranty. If the defects are properly reported to Manufacturer within the warranty period, and the defects are of such type and nature as to be covered by this warranty, Manufacturer shall, at its expense, furnish replacement Products or, at Manufacturer's option, replacement parts for the defective products. Shipping and installation of the replacement Products or replacement parts shall be at the Buyer's expense.
2. **Other Limits:** THE FOREGOING IS IN LIEU OF ALL OTHER WARRANTIES, EXPRESSED OR IMPLIED, INCLUDING BUT NOT LIMITED TO THE IMPLIED WARRANTIES OF MERCHANTABILITY AND FITNESS FOR A PARTICULAR PURPOSE. Manufacturer does not warrant against damages or defects arising from improper installation (where installation is by persons other than Manufacturer), against defects in products or components not manufactured by Manufacturer, or against damages resulting from such non-Manufacturer made products or components. Manufacturer passes on to the Buyer the warranty it received (if any) from the maker of such non-Manufacturer made products or components. This warranty also does not apply to Products upon which repairs and / or modifications have been effected or attempted by persons other than pursuant to written authorization by Manufacturer. This includes any welding on equipment which could damage electrical components. Manufacturer does not warrant against casualties or damages resulting from misuse and / or abuse of Products, improper storage or handling, acts of nature, effects of weather, including effects of weather due to outside storage, accidents, or damages incurred during transportation by common carrier.
3. **Exclusive Obligation:** THIS WARRANTY IS EXCLUSIVE. The sole and exclusive obligation of Manufacturer shall be to repair or replace the defective Products in the manner and for the period provided above. Manufacturer shall not have any other obligation with respect to the Products or any part thereof, whether based on contract, tort, strict liability or otherwise. Under no circumstances, whether based on this Limited Warranty or otherwise, shall Manufacturer be liable for lost profits, lost revenue, lost sales (whether direct or indirect damages), incidental, special, punitive, indirect or consequential damages.
4. **Other Statements:** Manufacturer's employees or representatives' oral or other written statements do not constitute warranties, shall not be relied upon by Buyer, and are not a part of the contract for sale or this limited warranty.
5. **Return Policy:** Approval is required prior to returning goods to Manufacture. A restocking fee will apply.
6. **Entire Obligation:** This Limited Warranty states the entire obligation of Manufacturer with respect to the Products. If any part of this Limited Warranty is determined to be void or illegal, the remainder shall remain in full force and effect.

US / Canada Non-Exclusive 2016



DOCUMENT REVIEW RECORD	
DATE	BY
03-20	BT

USC, LLC

2320 124th road

Sabetha, KS 66534

PHONE: (785) 431-7900

EMAIL: sales-team@uscllc.com

