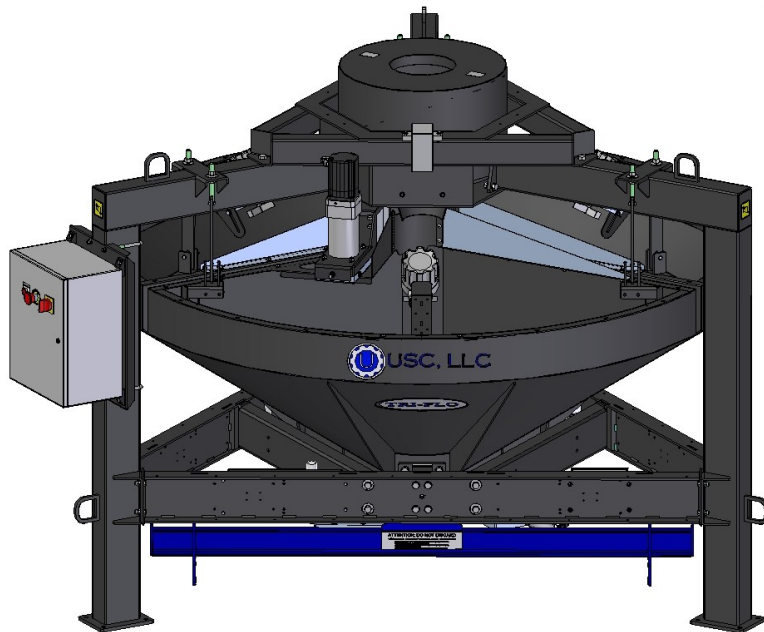




TRI-FLO® with Servo

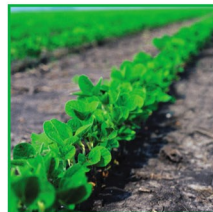
(Standard and High Capacity)
EQUIPMENT REVISION: 01A



PARTS MANUAL

Document: MD-09-06-5011

Revision: A Effective Date: 02-2020



INTRODUCTION

Thank you for choosing USC, LLC for your equipment needs. We appreciate your business and will work diligently to ensure that you are satisfied with your choice.

OVERVIEW

The purpose of this manual is to provide you with the basic information needed to operate and maintain the Tri - Flo ® System. It does not hold USC, LLC liable for any accidents or injuries that may occur.

The technical information provided in this document is based on extensive testing under controlled conditions at the USC research and development facility. This information is given without guarantee as the conditions of operation and storage of the equipment are beyond our control. Variables such as temperature, humidity, viscosity of chemical products and changes in seed size or variety may all effect the accuracy of application and seed coverage. Periodically check the equipment calibration while treating and make adjustments as required. This will insure the optimum seed coverage.

RECEIVING YOUR EQUIPMENT

As soon as the equipment is received, it should be carefully inspected to make certain that it has sustained no damage during shipment and that all items listed on the packing list are accounted for. If there is any damage or shortages, the purchaser must immediately notify USC, LLC. Ownership passes to purchaser when the unit leaves the USC, LLC. premises. The purchaser is responsible for unloading and mounting all components of the equipment.

Document the serial number of the machine for future reference. The serialization label is located on the left side of the frame cross member under the number one hopper.



**Tri - Flo ®
Serial Number**

SERIAL NUMBER: _____

TABLE OF CONTENTS

<u>Section</u>	<u>Contents</u>	<u>Page #</u>
Section A	Safety Instructions	5
	C2D2 Specifications and Labels	18
Section B	Mechanical Drawings	18
	Standard Capacity Parts	18
	High Capacity Parts	34
	Accessories	71
	Index by Part Number	79
Section H	Limited Warranty	80

SECTION A **SAFETY INSTRUCTIONS**

Every year accidents in the work place maim, kill and injure people. Although it may be impossible to prevent all accidents, with the right combination of training, operating practices, safety devices, and operator vigilance, the number of accidents can be significantly reduced. The purpose of this section is to educate equipment users about hazards, unsafe practices, and recommended hazard avoidance techniques.

If any of the required regularly scheduled maintenance is located above the reach of the operator, they should follow the companies normal safe practices of reaching that particular height, utilizing the companies specified equipment and following normal safety precautions.

When working with treatment chemicals, operators should always wear protective gloves, safety glasses, and follow the companies safety precautions in the case of any spillage or operator contamination.

SAFETY WORDS AND SYMBOLS

It is very important that operators and maintenance personnel understand the words and symbols that are used to communicate safety information. Safety words, their meaning and format, have been standardized for U.S. manufacturers and published by the American National Standards Institute (ANSI). The European Community (ETC.) has adopted a different format based on the International Standards Organization (I.E.) and applicable machinery directives. Both formats are presented below. Graphic symbols are not standardized, but most manufacturers will use some variation of the ones seen in this manual.

MOTS ET SYMBOLES SECURITY

Il Est très important que les opérateurs et le personnel d'entretien à comprendre les mots et les symboles qui sont utilisés pour communiquer des informations de sécurité. Mots de sécurité, de leur signification et le format, ont été normalisés pour les fabricants américains et publié par l' American National Standards Institute (ANSI). La Communauté européenne (CE) a adopté un format différent sur la base de l'Organisation internationale de normalisation (ISO) et des directives de machines applicables. Les deux formats sont présentés ci-dessous. Les symboles graphiques ne sont pas standardisés, mais la plupart des fabricants utilisent une variante de ceux observés dans ce manuel.



Indicates an imminently hazardous situation which, if not avoided, **will** result in death or serious injury.



Indique une situation extrêmement dangereuse qui, si pas évitée, entraînera la mort ou des blessures graves.



Indicates a potentially hazardous situation which, if not avoided, **could** result in death or serious injury.



Indique une situation potentiellement dangereuse qui, si pas évitée, pourrait entraîner la mort ou des blessures graves.



Indicates a potentially hazardous situation which, if not avoided, **may** result in minor or moderate injury and/or property damage.



Indique une situation potentiellement dangereuse qui, si pas évitée, peut entraîner des blessures mineures ou modérées et / ou des dommages.



Provides additional information that the operator needs to be aware of to avoid a potentially hazardous situation.



Fournit des informations supplémentaires que l'opérateur doit être conscient de d'éviter une situation potentiellement dangereuse.



Notice is used to notify people of important installation, operation or maintenance information which is not hazard related.



Avis Est utilisé pour informer les gens des informations de maintenance qui ne Est pas danger lié importante installation, l'exploitation ou.



Mandatory Lockout Power Symbol. Disconnect, lockout and tag-out electrical and other energy sources before inspecting, cleaning or performing maintenance on this panel.

Symbole de puissance verrouillage obligatoire. Débranchez, de verrouillage et de désignation énergie électrique et d'autres sources avant d'inspecter, de nettoyage ou de la maintenance de ce panneau.



International Safety Alert Symbol. The exclamation point (!) surrounded by a yellow triangle indicates that an injury hazard exists. However, it does not indicate the seriousness of potential injury. The exclamation point (!) is also used with the DANGER, WARNING and CAUTION symbols so the potential injury is indicated.

Sécurité Symbole International Alert . Le point d'exclamation (!) Entouré par un triangle jaune indique que un risque de blessure existe . Cependant, il ne indique pas la gravité des blessures potentielles. Le point d'exclamation (!) Est également utilisé avec les symboles DANGER, AVERTISSEMENT et ATTENTION de sorte que le risque de blessure Est indiqué.



Electrocution Hazard Symbol. This symbol indicates that an electrocution hazard exists. Serious injury or death could result from contacting high voltage.

Symbole de danger d'électrocution . Ce symbole indique qu'un danger d'électrocution existe. Des blessures graves ou la mort pourraient résulter de contact haute tension.



International Electrocution Hazard. This symbol indicates that an electrocution hazard exists. Serious injury or death could result from contacting high voltage.

Danger d'électrocution international. Ce symbole indique qu'un danger d'électrocution existe. Des blessures graves ou la mort pourraient résulter de contact haute tension.



Mandatory Read Manual Action Symbol. (I.E. format) This symbol instructs personnel to read the Operators Manual before servicing or operating the equipment.

Obligatoire Lire Symbole d'action Manuel. (Format ISO)
Ce symbole indique le personnel de lire le manuel de l'opérateur avant de réparer ou d'utiliser l'équipement.



Mandatory Read Manual Action Symbol. This symbol instructs personnel to read the Operators Manual before servicing or operating the equipment.

Obligatoire Lire Symbole d'action Manuel . Ce symbole indique le personnel de lire le manuel de l'opérateur avant de réparer ou d'utiliser l'équipement.

LOCKOUT / TAGOUT PROCEDURES

Lockout/Tagout is the placement of a lock/tag on an energy isolating device in accordance with an established procedure. When taking equipment out of service to perform maintenance or repair work, always follow the lockout / tagout procedures as outlined in ANSI Z344.1 and/or OSHA Standard 1910.147. This standard "requires employers to establish a program and utilize procedures for affixing appropriate lockout devices or tagout devices to energy isolating devices and to otherwise disable machines or equipment to prevent unexpected energizing, start-up, or release of stored energy in order to prevent injury to employees."

LES PROCEDURES DE VERROUILLAGE / ETIQUETAGE

Verrouillage / étiquetage Est le placement d'un verrouillage / tag sur un dispositif d'isolement de l'énergie conformément à une procédure établie. Lors de la prise hors service des équipements pour effectuer la maintenance ou de réparation, toujours suivre les procédures de verrouillage / débranchement comme indiqué dans la norme ANSI Z344.1 et / ou la norme OSHA 1910.147. Cette norme "oblige les employeurs à établir un programme et appliquer des procédures pour la fixation des dispositifs de verrouillage appropriés ou des dispositifs déconsignation à l'énergie dispositifs d'isolement et d' autre machines ou équipements désactiver pour éviter énergisant inattendu, start-up, ou la libération de l'énergie stockée dans le but de prévenir les blessures aux employés."

EMERGENCY STOP



There is an Emergency Stop push button on all LPV Seed Treaters which is located on the Treater Control Panel. The LPV Automated Treater has an additional Emergency Stop pushbutton on the Main Control Panel. Actuators of emergency stop shall be colored RED. The background immediately around the device actuator shall be colored YELLOW. The actuator pushbutton operated device shall be of the palm or mushroom head type.

ARRET D'URGENCE



Il ya un bouton-poussoir d'arrêt d'urgence sur tous les traiteurs de semences LPV qui Est situé sur le Panneau de configuration Traiteur. Le LPV automatisé Traiteur dispose d'une autre arrêt d'urgence bouton poussoir sur le panneau de commande principal. Actionneurs de freinage d'urgence doivent être de couleur rouge. Le fond immédiatement autour de l'actionneur de l'appareil doit être de couleur JAUNE. Le dispositif actionné actionneur de bouton-poussoir doit être de la paume ou champignons type de tête.

CONTROLLED STOP

This is the stopping of machine motion by reducing the electrical command signal to 0 (zero) once the stop signal has been recognized.

ARRET CONTROLÉ

Ce Est l' arrêt du mouvement de la machine en réduisant le signal de commande électrique à 0 (zéro) dès que le signal d'arrêt a été reconnue.

HAZARD REVIEW

RISQUE EXAMEN



Electrocution Hazard

Electrocution accidents are most likely to occur during maintenance of the electrical system or when working on or near exposed high voltage wiring. This hazard does not exist when the electrical power has been disconnected, properly locked, and tagged out.

Risque d'électrocution

Les accidents d'électrocution sont les plus susceptibles de se produire lors de la maintenance du système électrique ou pour travailler sur ou à proximité du câblage haute tension exposé. Ne existe pas ce danger lorsque l'alimentation électrique a été déconnecté, bien verrouillé et étiquetés sur.



⚠ WARNING

Automatic Start Hazard

This equipment may be controlled by an automated system and may start without warning. Failure to properly disconnect, lockout, and tagout all energy sources of remotely controlled equipment creates a very hazardous situation and could cause injury or even death. PLEASE STAY CLEAR AND BE ALERT.

Démarrer danger automatique

! AVERTISSEMENT

Cet équipement peut être contrôlé par un système automatisé et peut démarrer sans avertissement. Sources de l'équipement contrôlé à distance non débranché correctement, lock-out, et tous déconsignation énergie crée une situation très dangereuse et pourrait causer des blessures ou même la mort. Se IL VOUS PLAÎT rester à l'écart et d'être vigilant.

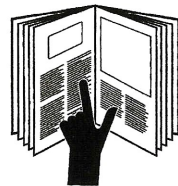
YOU are responsible for the **SAFE** operation and maintenance of your USC, LLC equipment . **YOU** must ensure that you and anyone else who is going to operate, maintain or work around the equipment be familiar with the operating and maintenance procedures and related **SAFETY** information contained in this manual. This manual will take you step-by-step through your working day and alert you to good safety practices that should be adhered to while operating the equipment

Remember, **YOU** are the key to safety. Good safety practices not only protect you, but also the people around you. Make these practices a working part of your safety program. Be certain that **EVERYONE** operating this equipment is familiar with the recommended operating and maintenance procedures and follows all the safety precautions. Most accidents can be prevented. Do not risk injury or death by ignoring good safety practices.

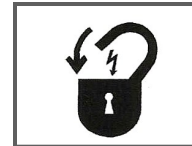
- Equipment owners must give operating instructions to operators or employees before allowing them to operate the machine, and at least annually thereafter per OSHA (Occupational Safety and Health Administration) regulation 1928.57.
- The most important safety device on this equipment is a **SAFE** operator. It is the operator's responsibility to read and understand **ALL** Safety and Operating instructions in the manual and to follow them. All accidents can be avoided.
- A person who has not read and understood all operating and safety instructions is not qualified to operate the machine. An untrained operator exposes himself and bystanders to possible serious injury or death.
- Do not modify the equipment in any way. Unauthorized modification may impair the function and/or safety and could affect the life of the equipment.
- Think SAFETY! Work SAFELY!

GENERAL SAFETY

1. Read and understand the operator's manual and all safety labels before operating, maintaining, adjusting or unplugging the equipment .
2. Only trained persons shall operate the equipment . An untrained operator is not qualified to operate the machine.
3. Have a first-aid kit available for use should the need arise, and know how to use it.



4. Provide a fire extinguisher for use in case of an accident. Store in a highly visible place.
5. Do not allow children, spectators or bystanders within hazard area of machine.
6. Wear appropriate protective gear. This includes but is not limited to:
 - A hard hat
 - Protective shoes with slip resistant soles
 - Protective goggles
 - Heavy gloves
 - Hearing protection
 - Respirator or filter mask
7. Place all controls in neutral or off, stop motor, and wait for all moving parts to stop. Then disable power source before servicing, adjusting, repairing, or unplugging.
8. Review safety related items annually with all personnel who will be operating or maintaining the equipment.

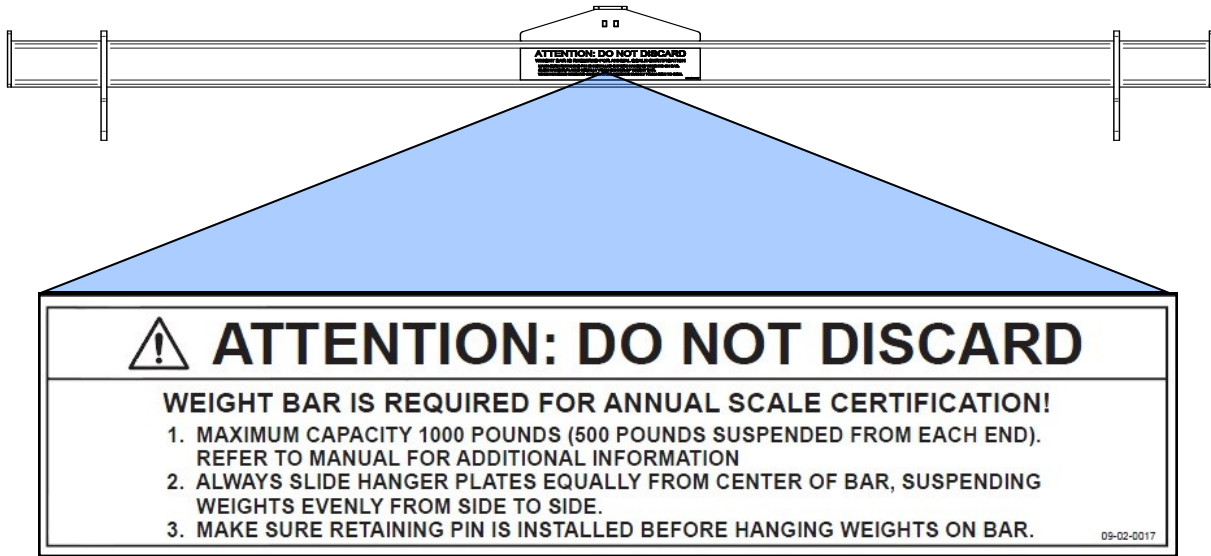


OPERATING SAFETY:

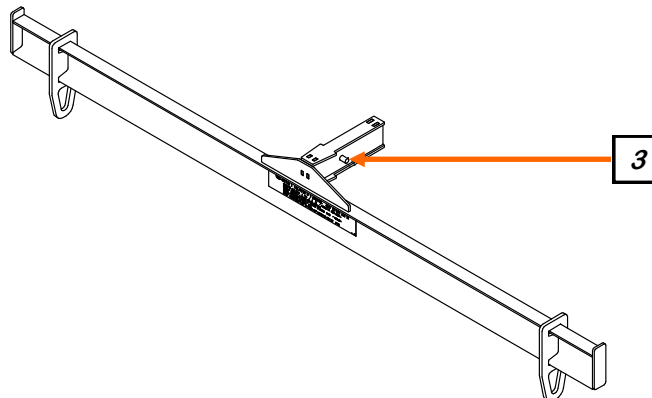
1. Read and understand the Operator's Manual and all safety labels before using.
2. Disconnect and disable electrical supply completely and wait for all moving parts to stop before servicing, adjusting, repairing or unplugging.
3. Clear the area of bystanders, especially children, before starting.
4. Be familiar with the machine hazard area. If anyone enters hazard area, shut down machine immediately. Clear the area before restarting.
5. Keep hands, feet, hair and clothing away from all moving and/or rotating parts.
6. Stay away from overhead obstructions and power lines during operation and transporting. Electrocutation can occur without direct contact.
7. Do not operate machine when any guards are removed.
8. Inspect welds and repair if needed.

SCALE CERTIFICATION WEIGHT BAR SAFETY:

1. The scale certification bar has a maximum capacity of 1000 pounds (500 pounds hung from each end).
2. An additional 500 pounds may be added for a total of 1500 pounds but must be suspended from the center of the weight bar. Any additional weight required for certification must be placed inside the hopper.
3. Make sure retaining pin is installed before hanging weights on bar.
4. Slide hanger plates equally from center of bar before adding any weights.
5. When hanging weights on bar, hang weights evenly from side to side.



Label Part # 09-02-0017



PLACEMENT SAFETY

1. Move only with the appropriate equipment
2. Stay away from overhead power lines when moving equipment. Electrocutation can occur without direct contact.
3. Be familiar with machine hazard area. If anyone enters hazard areas, shut down machine immediately. Clear the area before restarting.
4. Operate the equipment on level ground free of debris. Anchor the equipment to prevent tipping or upending.



Before placement of the equipment, be sure that ground is reasonably level. The equipment may topple or work improperly if the ground is too uneven, damaging the equipment and / or causing personal injury.



Avant de placement de l'équipement, assurez-vous que sol Est relativement plat. L'équipement peut tomber ou mal fonctionner si le sol Est trop inégale, endommager l'équipement et / ou causer des blessures.

MAINTENANCE SAFETY

1. Review the operator's manual and all safety items before working with, maintaining or operating the equipment .
2. Place all controls in neutral or off, stop motors, disable power source, and wait for all moving parts to stop before servicing, adjusting, repairing or unplugging.
3. Follow good shop practices:
Keep service area clean and dry.
Be sure electrical outlets and tools are properly grounded.
Use adequate light for the job at hand.
4. Keep hands, feet, hair and clothing away from all moving and/or rotating parts.
5. Clear the area of bystanders, especially children, when carrying out any maintenance and repairs or making any adjustments.
6. Before resuming work, install and secure all guards when maintenance work is completed.
7. Keep safety labels clean. Replace any sign that is damaged or not clearly visible.



SAFETY LABELS

1. Keep safety labels clean and legible at all times.
2. Replace safety labels that are missing or have become illegible.
3. Replaced parts that displayed a safety label should also display the current label.
4. Replacement safety labels are available. Contact your authorized dealer.

How to Install Safety Labels:

- Be sure that the installation area is clean and dry.
- Be sure temperature is above 50°F (10°C).
- Decide on the exact position before you remove the backing paper.
- Remove the smallest portion of the split backing paper.
- Align the sign over the specified area and carefully press the small portion with the exposed sticky backing in place.
- Slowly peel back the remaining paper and carefully smooth the remaining portion of the sign in place.
- Small air pockets can be pierced with a pin and smoothed out using the piece of sign backing paper.



Located on the USC equipment you will find safety labels. Always be sure to read and follow all directions on the labels.



Situé sur l'équipement USC vous trouverez des étiquettes de sécurité. Veuillez à toujours lire et suivre toutes les instructions sur les étiquettes.



Guards provided with USC equipment are to remain in place during operation.



Gardes fournis avec des équipements USC doivent rester en place pendant le fonctionnement.

Think **SAFETY!** Work **SAFELY!**

REMEMBER—If Safety Labels have been damaged, removed, become illegible, or parts replaced without safety labels, new labels must be applied. New safety labels are available from your authorized dealer.



Part # 09-02-0001



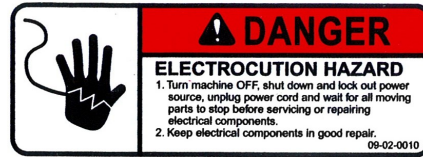
Part # 09-02-0009



Part # 09-02-0002

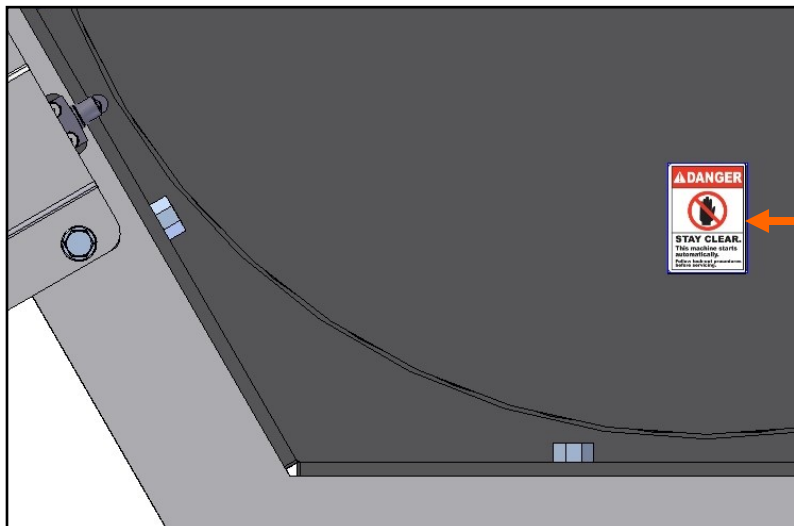


Part # 09-02-0003



Part # 09-02-0010

(TOP OF DISTRIBUTION ASSEMBLY - 2 PLACES)




Part # 09-02-0022

C2D2 SPECIFICATIONS AND LABELS

If any of the panels are located in the hazardous area described in the installation section (see page 18), the following criteria must be met.

1. All 120VAC connections must be hard wired to a listed IP65 rated enclosure in accordance with local electrical codes.
2. The C2D2 certifications are only valid for equipment operating at 60 HZ.
3. The approved operating temperature for this equipment is between 0°C (32°F) and 40°C (104°F).
4. All RJ45 and USB pass-through connector caps must remain closed to achieve a C2D2 rating. Hard wire these connections in accordance with local electrical codes.

The following labels and certification plates must be mounted to the outside of the control panel so that they are in plain view.

MFG. By:  USC
Max Voltage: 120V, 1PH, 60Hz
Total FLA: 14
Largest Motor: 7.2 Amps
Equipment Model: 05-07-0763
Suitable to be used in Class II, Div 2, Group G, T4A Hazardous Locations

!!WARNING!!
DISCONNECT POWER BEFORE REMOVING COVERS. KEEP COVERS/
CONNECTIONS CLOSED WHILE CIRCUITS ARE LIVE. SEE INSTRUCTION MANUAL
!!AVERTISSEMENT!!
DÉBRANCHER L'ALIMENTATION AVANT DE RETIRER LES COUVERCLES. GARDEZ
LES COUVERCLES / CONNEXIONS FERMÉS PENDANT QUE LES CIRCUITS SONT EN
CIRCUIT. VOIR LE MANUEL D'INSTRUCTIONS

!!WARNING!!
EXPLOSION HAZARD. DO NOT REMOVE OR REPLACE CONNECT OR DISCONNECT
WHILE CIRCUIT IS LIVE UNLESS THE AREA IS FREE OF IGNITIBLE
CONCENTRATIONS.
!!AVERTISSEMENT!!
RISQUE D'EXPLOSION. NE PAS ENLEVER OU REMPLACER LA CONNEXION OU LA
DÉCONNEXION TANT QUE LE CIRCUIT EST EN CIRCUIT SAUF SI LA ZONE EST
EXEMPTÉ DE CONCENTRATIONS IGNITIABLES.

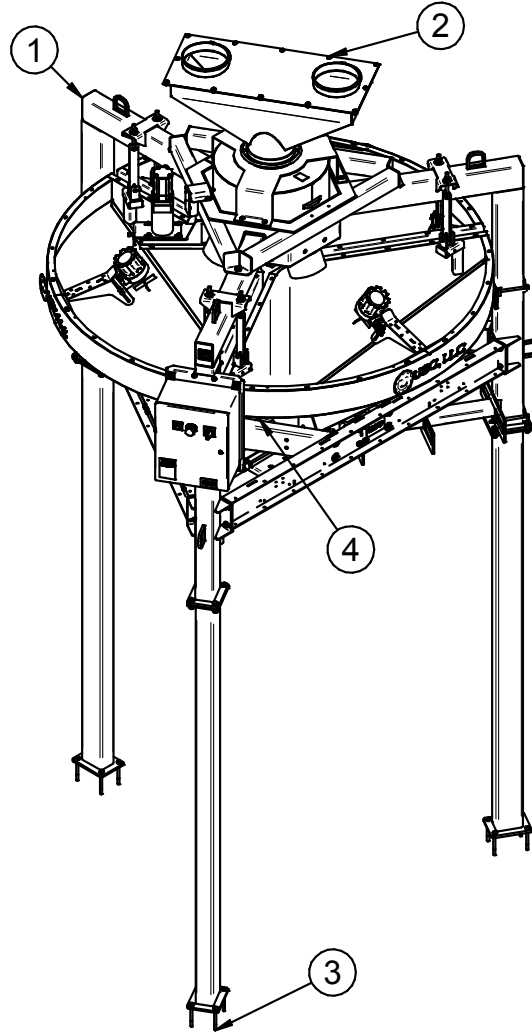

Certified to
CSA Std C22.2
No. 213 & 68
Intertek
4010806
INDUSTRIAL CONTROL PANEL
Seed Treating Systems For Use In
Class II Div 2 Group G,
T4A Location


Intertek
4010806
INDUSTRIAL CONTROL PANEL

MECHANICAL DRAWINGS SECTION B

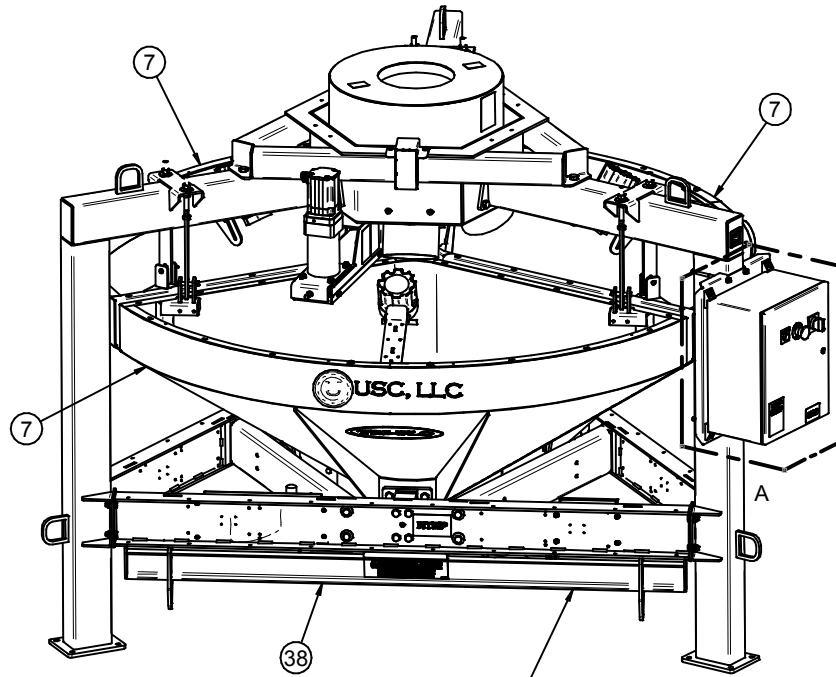
The following pages show the parts of the Tri-Flo®. Please have the Tri-Flo® serial number and part number ready when ordering parts.

STANDARD CAPACITY TRI-FLO®

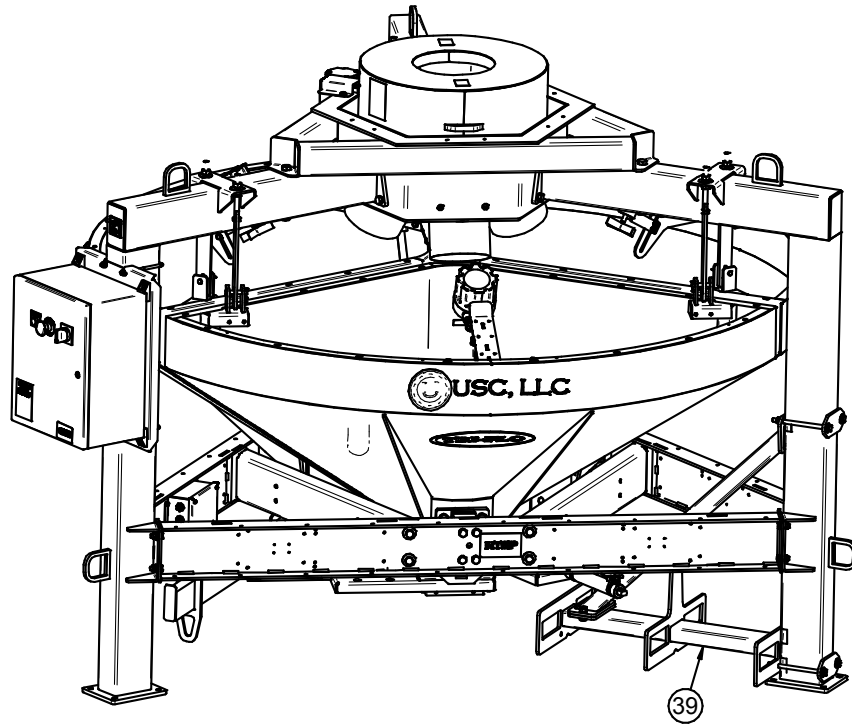


PART #		TFSC		
Item #	Part #	Description	Qty	See Page
1	05-07-1009	TRI-FLO V4 STANDARD CAPACITY	1	19
2	ASSORTED	TRI-FLO STANDARD CAPACITY INLET	1	25-27
3	ASSORTED	KIT LEG TRI-FLO	1	53-57
4	ASSORTED	KIT TRI-FLO OUTLET	1	68-71

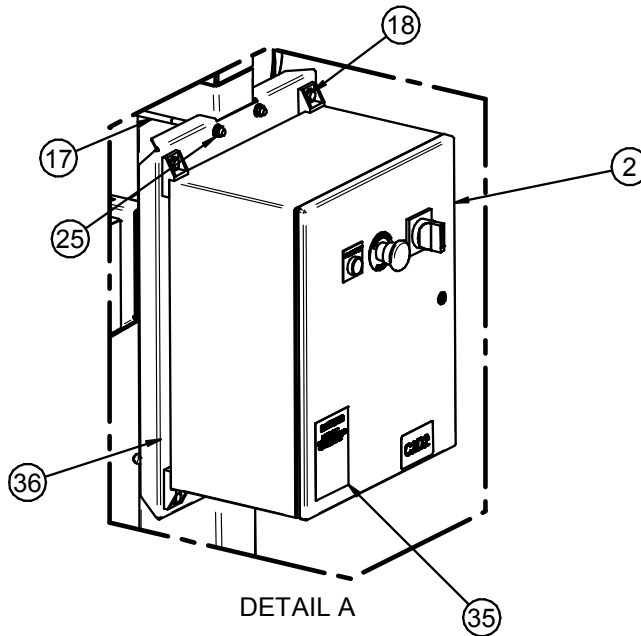
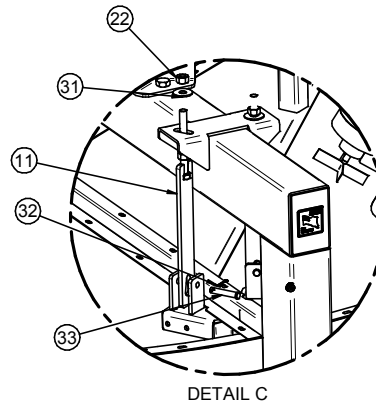
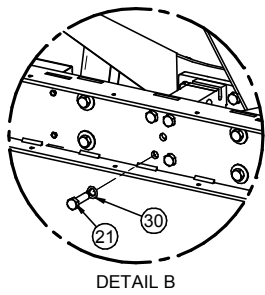
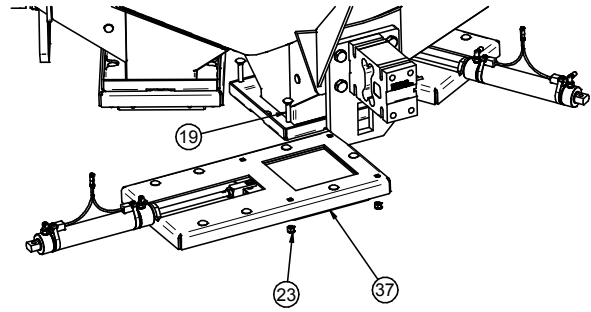
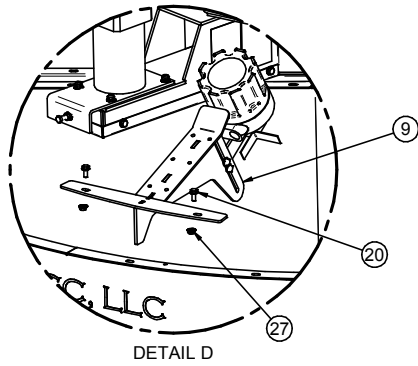
STANDARD CAPACITY MAIN UNIT (05-07-1009 REV B1)



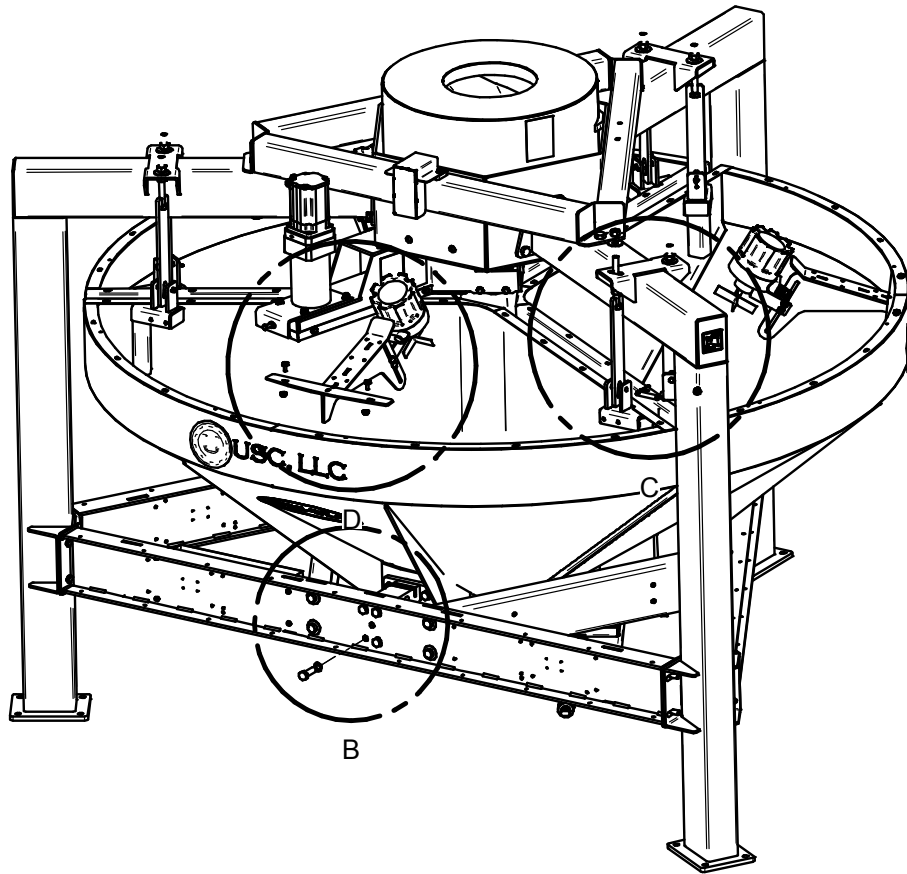
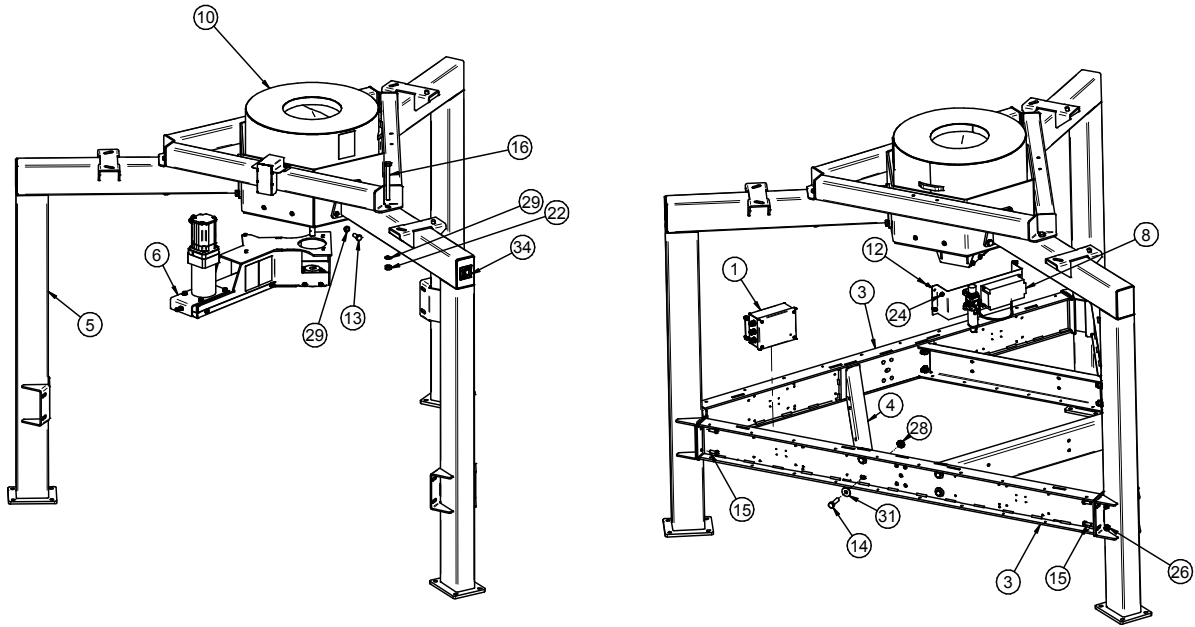
WEIGH BAR INSTALLED
UNDER HOPPER 1



STANDARD CAPACITY MAIN UNIT (05-07-1009 REV B1)



STANDARD CAPACITY MAIN UNIT (05-07-1009 REV B1)



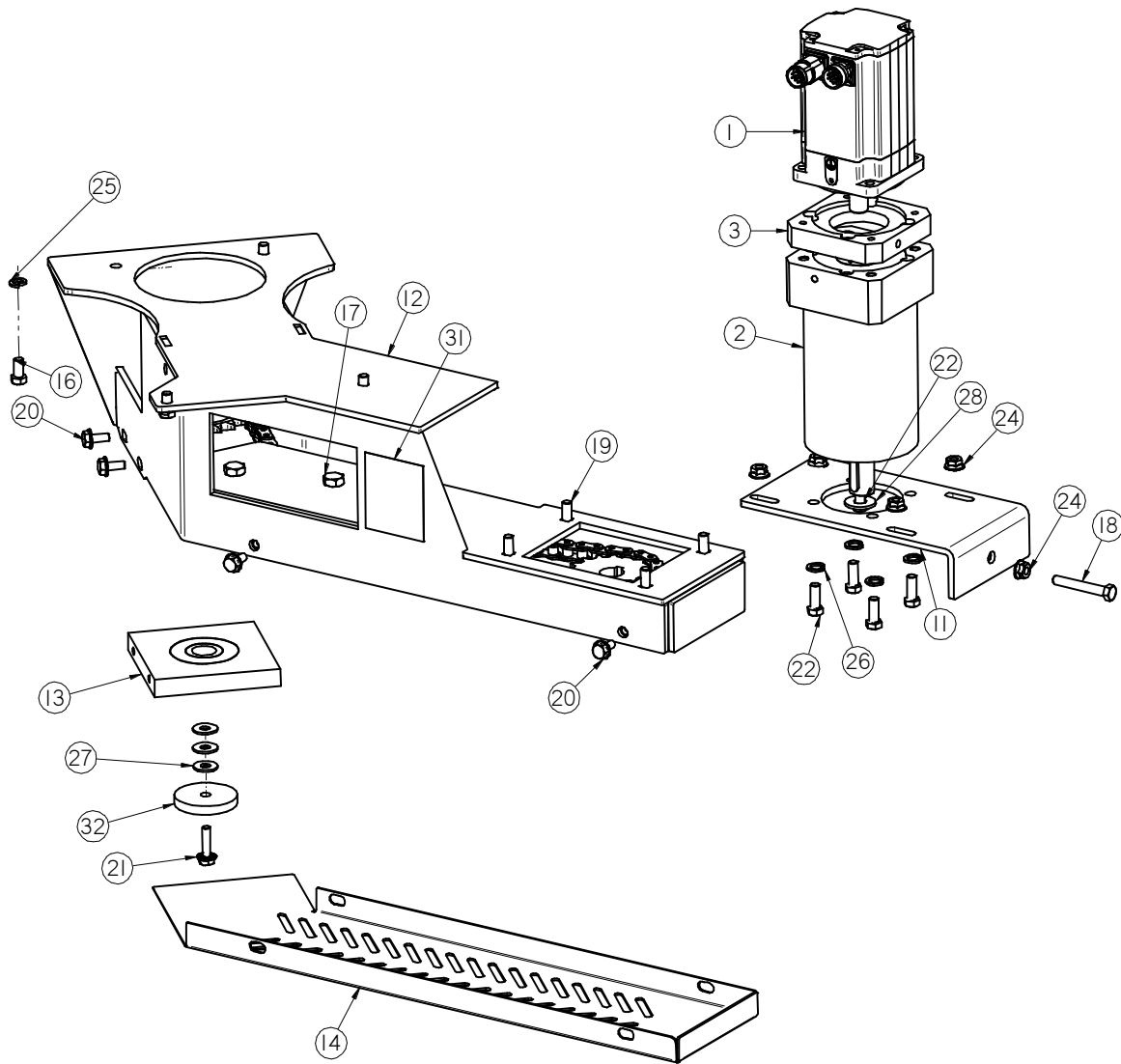
STANDARD CAPACITY MAIN UNIT (05-07-1009 REV B1)

PART #		05-07-1009 REV B1		
Item #	Part #	Description	Qty	See Page
1	03-12-0364	PNL LOAD CELL JCT BOX TRI FLO	1	
2	03-12-0552	PNL CNTL V4 TRI-FLO SERVO DRV PNL	1	
3	05-03-0900	WDMT LEG BRACE CNTNS FLOW SYSTEM	3	
4	05-03-1008	WDMT BRACE LDCL PLT	3	
5	05-05-0066	WDMT LEG CNTNS FLOW WH SYS OPEN TOP	3	
6	05-07-0757	ASSY SERVO DRV TRI FLO	1	24
7	05-07-0760	ASSY HOPP 2-3 TRI FLO	3	30
8	05-07-0969	ASSY SMC VLV & REGL TRI FLO V4	1	51
9	05-07-0974	ASSY HIGH LVL INDI TRI FLO V4	3	50
10	05-07-0984	ASSY DIST TRI FLO V4	1	27
11	05-09-0045	WDMT HOPP SUPP STRAP TRI-FLO	6	
12	06-01-0007	BOLT .250-20 X 1.00 ZP GR5	4	
13	06-01-0031	BOLT .625-11 X 1.50 ZP GR5	6	
14	06-01-0075	BOLT .625-11 X 2.50 ZP GR5	12	
15	06-01-0080	BOLT .500-13 X 1.25 ZP GR5	12	
16	06-01-0096	BOLT .625-11 X 7.00 ZP GR5	3	
17	06-01-0113	BOLT U .375-16 X 4.00 X 6.625 ZP	2	
18	06-01-0124	BOLT FLG .375-16 X .750 ZP GR5	4	
19	06-01-0136	BOLT CRG .375-16 X 2.00 ZP GR5	12	
20	06-01-0138	BOLT FLG .3125-18 X .750 ZP GR5	6	
21	06-01-0230	BOLT M16-2.00 X 50MM FTH	12	
22	06-02-0005	NUT FULL .625-11 ZP GR5	15	
23	06-03-0003	NUT NYL LOCK .375-16 ZP GR5	12	
24	06-03-0013	NUT LOCK FLG .250-20 ZP GR5	4	
25	06-03-0014	NUT LOCK FLG .375-16 ZP GR5	8	
26	06-03-0015	NUT LOCK FLG .500-13 ZP GR5	12	
27	06-03-0019	NUT LOCK FLG .313-18 ZP GR5	6	
28	06-03-0029	NUT WHIZ LOCK FLG .625-11 GR5	12	
29	06-04-0005	WSHR LOCK SPLT .625 ZP	9	
30	06-04-0018	WSHR LOCK SPLT M16 ZP	12	
31	06-05-0006	WSHR FLAT .625 ZP	18	
32	06-09-0018	PIN CTR .125 X 1.50 SS	6	
33	06-09-0058	PIN CLVS .500 X 2.75 PLN	6	
34	09-01-0003	ATWK LBL MADE IN USA YEL 2.50X2.50	1	

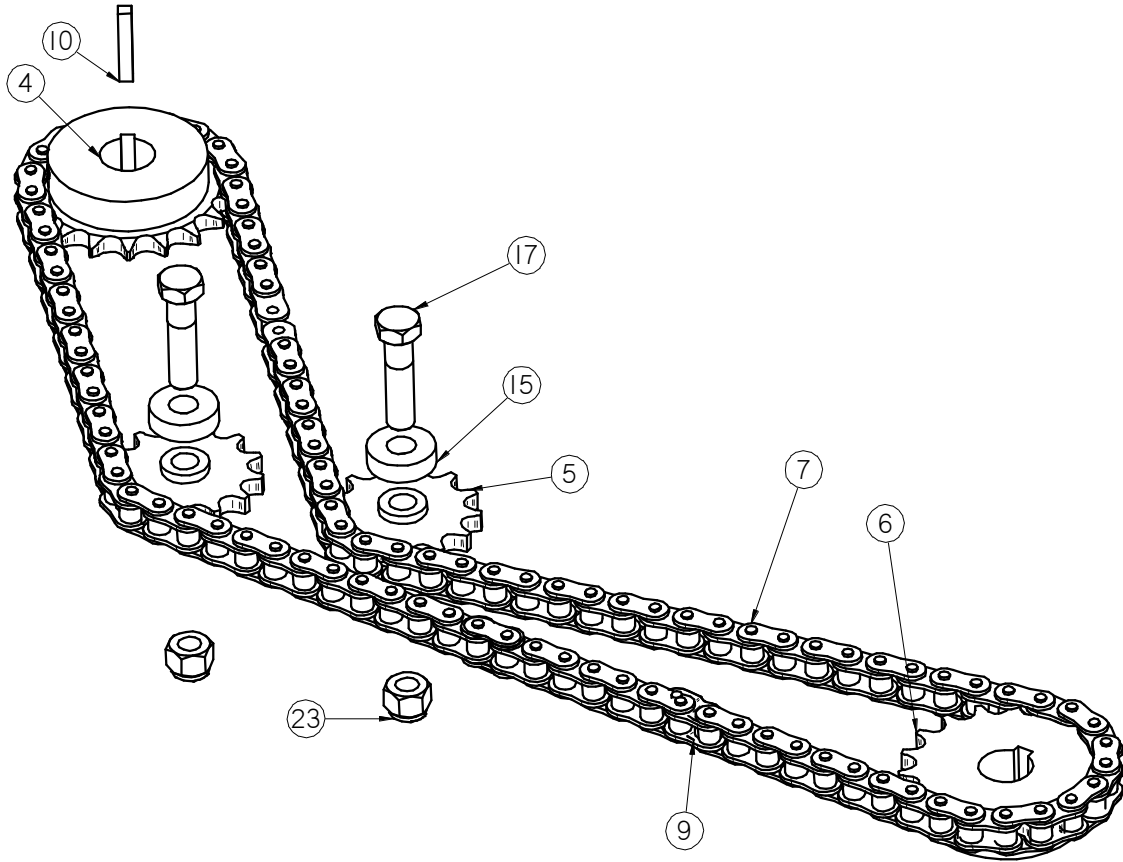
STANDARD CAPACITY MAIN UNIT (05-07-1009 REV B1)

PART #		05-07-1009 REV B1		
Item #	Part #	Description	Qty	See Page
35	09-02-0003	ATWK LBL DANGER LOCK-OUT	1	
36	102B71	BRKT TRI-FLO PNL	1	
37	12-04-0045	SLIDE GATE 6.00 SQ TRI-FLO V4	3	31
38	13-05-0263	KIT WEIGHT BAR TRI-FLOW	1	22
39	13-05-0268	KIT FORK PCKT ASSY TRI-FLOW	1	52

ASSEMBLY SERVO DRIVE SC (05-07-0757 REV A5)



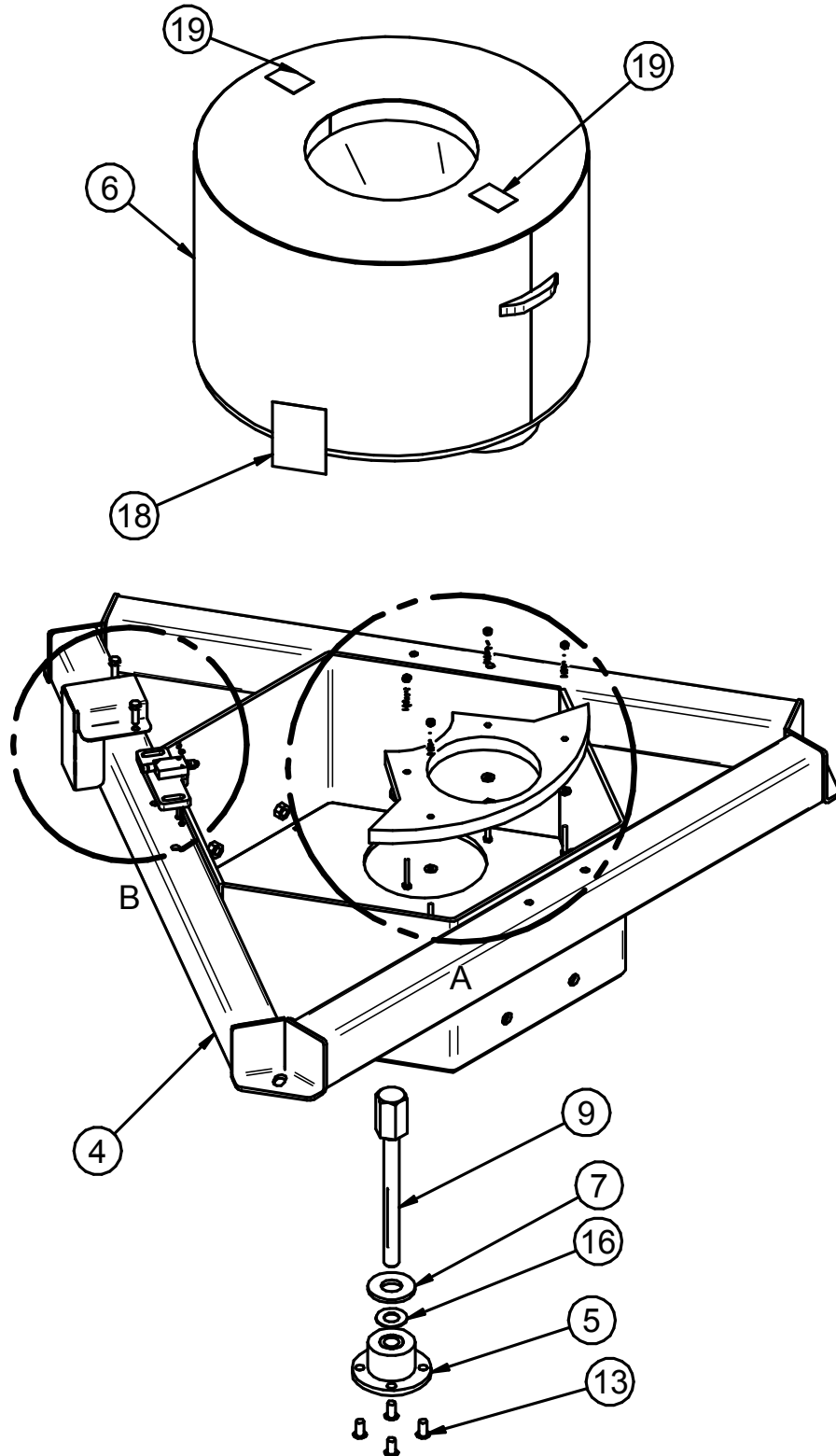
ASSEMBLY SERVO DRIVE SC (05-07-0757 REV A5)



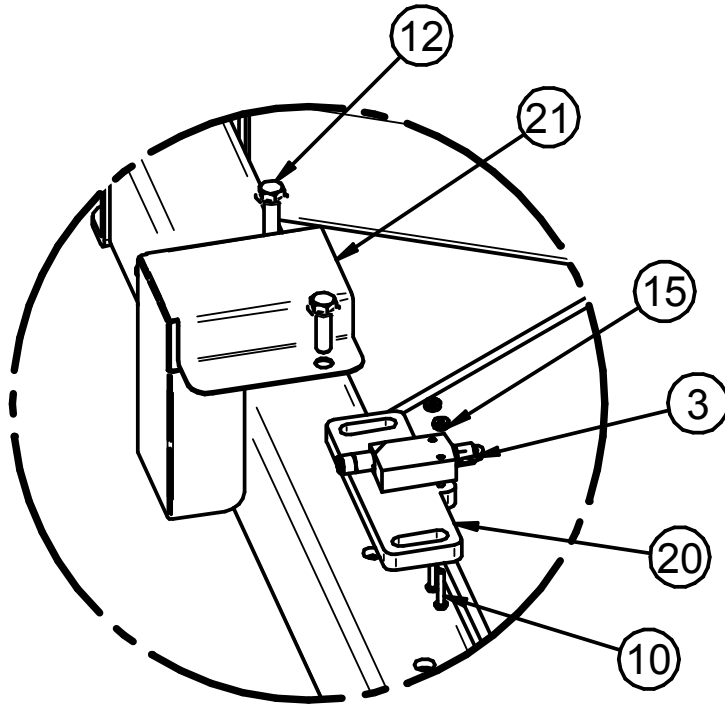
ASSEMBLY SERVO DRIVE SC (05-07-0757 REV A5)

PART #		05-07-0757 REV A5	
Item #	Part #	Description	Qty
1	01-01-0203	SERVO MTR BMH1002T27A2A	1
2	01-01-0204	SERVO MTR GEARBOX 120MM RATIO 40	1
3	01-01-0205	SERVO MTR GEARBOX KIT SIZE 120 BMH	1
4	01-02-0096	SPKT 18T 50P 1.00ID FNSH BORE	1
5	01-02-0115	SPKT 13T 50P .500ID IDLER	2
6	01-02-0122	SPKT #50 18T 25MM BORE 8MM KEYWAY	1
7	01-04-0002	CHAIN RLR 50	5.208
8	01-04-0005	CHAIN CTNG LINK 50P	1
9	01-04-0007	CHAIN OFFSET LINK 50P	1
10	01-10-0005	KEY .250 X 1.50 CS	1
11	05-03-1523	WDMT BRKT GBOX MNT SERVO DRV	1
12	05-04-0098	WDMT SLTR DRV CNTNS FLOW SYS 30U	1
13	05-04-0120	ASSY LOWER SHAFT CNTNS FLOW SYSTEM	1
14	05/10/3749	GRD SLTR CHAIN DRV	1
15	05/10/3811	WSHR .500 ID X 1.25 OD X .375 THK	2
16	06-01-0015	BOLT .375-16 X .750 ZP GR5	4
17	06-01-0027	BOLT .500-13 X 2.00 ZP GR5	2
18	06-01-0071	BOLT .375-16 X 2.50 ZP GR5	1
19	06-01-0115	BOLT CRG .375-16 X 1.00 ZP GR5	4
20	06-01-0124	BOLT FLG .375-16 X .750 ZP GR5	8
21	06-01-0189	BOLT FLG .375-16 X 1.250 ZP GR5	1
22	06-01-0295	BOLT M10-1.5 X 25MM ZP	5
23	06-03-0004	NUT NYL LOCK .500-13 ZP GR5	2
24	06-03-0014	NUT LOCK FLG .375-16 ZP GR5	5
25	06-04-0003	WSHR LOCK SPLT .375 ZP	4
26	06-04-0011	WSHR LOCK SPLT .438 ZP	4
27	06-05-0004	WSHR FLAT .375 ZP	3
28	06-05-0020	WSHR FLAT .438 ZP	1
29	09-02-0001	ATWK LBL DANGER FINGERS	1
30	09-02-0002	ATWK LBL DANGER GRD	1
31	09-02-0009	ATWK LBL WARNING ROTATING PARTS	1
32	10224D	PLT WSHR	1

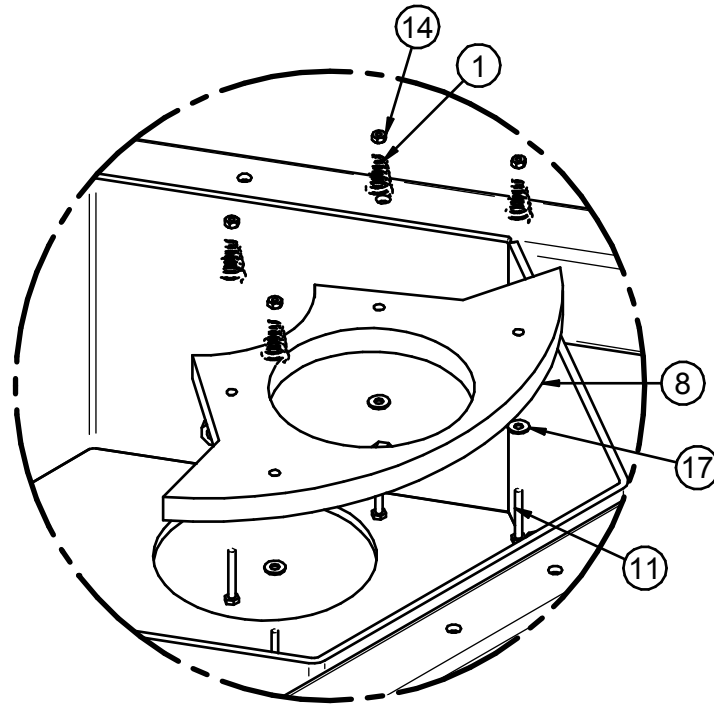
ASSEMBLY DISTRIBUTOR SC (05-07-0984 REV B0)



ASSEMBLY DISTRIBUTOR SC (05-07-0984 REV B0)



DETAIL B

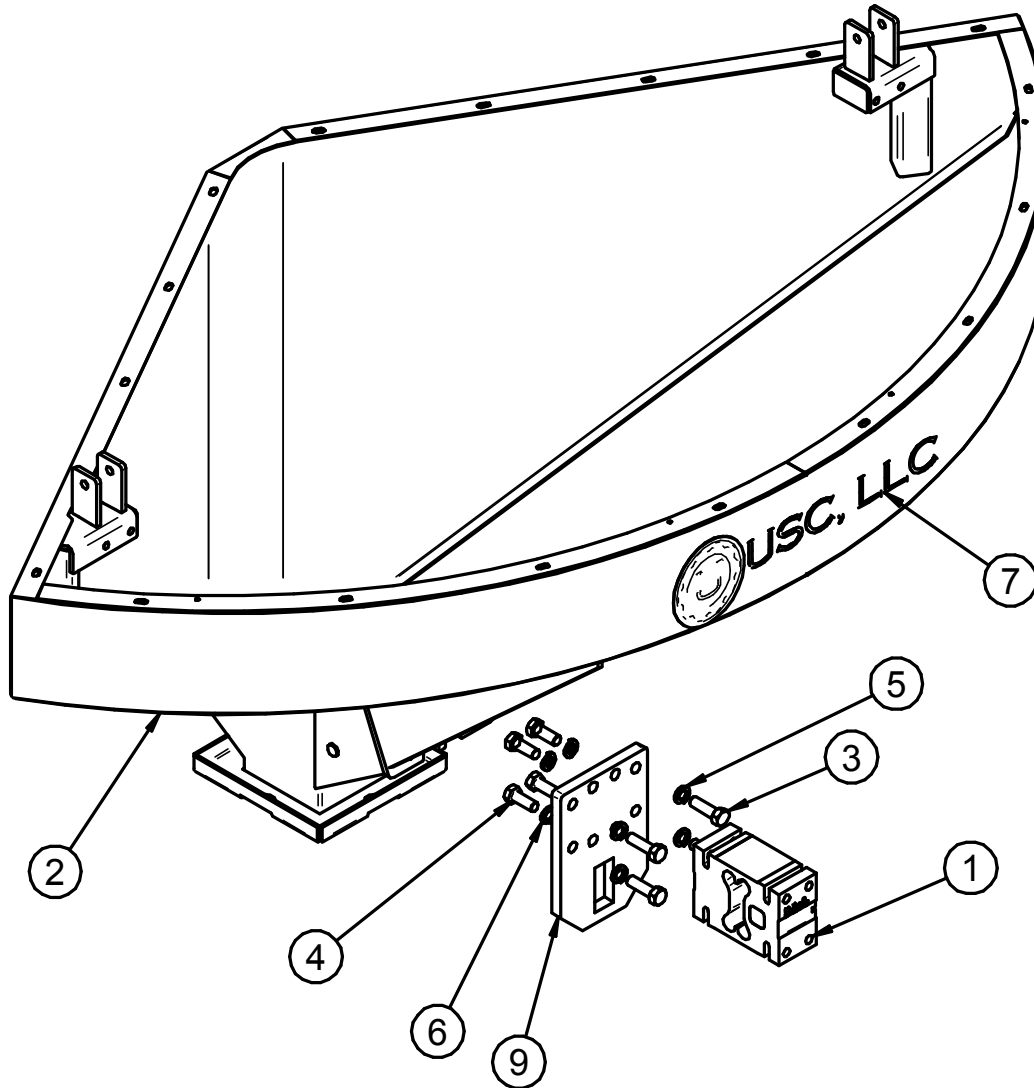


DETAIL A

ASSEMBLY DISTRIBUTOR SC (05-07-0984 REV B0)

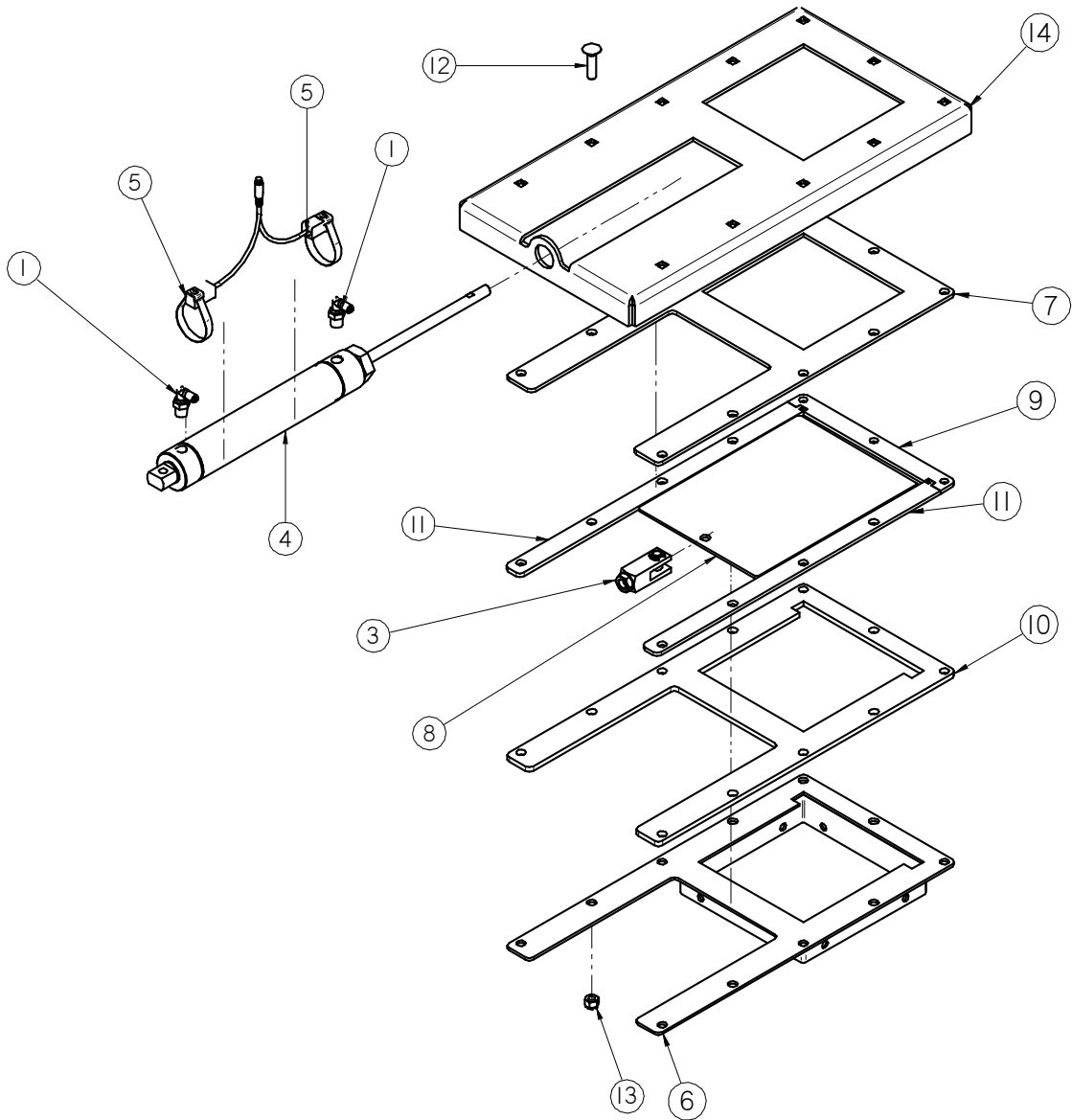
PART #		05-07-0984 REV B0	
Item #	Part #	Description	Qty
1	01-04-0094	SPG CNCL COMP .26ID X .055 X 1.50	4
2	03-08-0316	CONN TRCK RK4.4T-8-RS4.4T/S760/S771	1
3	03-10-0125	SW LMT SCHDR XCMD2102C12	1
4	05-03-1076	WDMT SLTR HSG CNTNS FLOW SYSTEM SMW	1
5	05-04-0118	ASSY SLTR BRG HSG CNTNS FLOW SYSTEM	1
6	05-07-0389	WDMT SLTR SPOUT CNTNS FLOW 11IN OPN	1
7	05-10-5821	WSHR .25THK X 1.313ID X 3.00OD	1
8	05-10-5823	PLT UHMW 7.0 ID DIST SLIDING SEAL	1
9	05-11-0412	SHAFT DIST DRV 1.75 HEX	1
10	06-01-0094	SCRW MACH 8-32 X 1.00 ZP	2
11	06-01-0097	BOLT .250-20 X 2.00 ZP GR5	4
12	06-01-0189	BOLT FLG .375-16 X 1.250 ZP GR5	2
13	06-01-0224	BOLT CAP .500-13 X 1.00 BTNH	4
14	06-02-0001	NUT FULL .250-20 ZP GR5	4
15	06-02-0034	NUT KLOCK 8-32 ZP	2
16	06-04-0016	WSHR THRST 1.0 X 1.99 X .088 PCMPST	1
17	06-05-0001	WSHR FLAT .250 ZP	4
18	09-02-0001	ATWK LBL DANGER FINGERS	1
19	09-02-0022	ATWK LBL DANGER AUTO START	2
20	10215E	PLT DIST PROOF SW BRKT CS	1
21	103929	SWITCH GUARD	1

ASSEMBLY HOPPER SC (05-07-0760 REV B0)



PART #		05-07-0760 REV B0	
Item #	Part #	Description	Qty
1	03-19-0042	LDCL VISHAY 1320 2200LB CLASS III	1
2	05-03-1032	WDMT HOPP WEDGE 30 UNIT OPEN TOP	1
3	06-01-0032	BOLT .625-11 X 2.00 ZP GR5	4
4	06-01-0228	BOLT M16-2.00 X 40MM FTH	4
5	06-04-0005	WSHR LOCK SPLT .625 ZP	4
6	06-04-0018	WSHR LOCK SPLT M16 ZP	4
7	09-01-0043	ATWK LBL USC 22.00 X 5.75 PRO-CUT	1
8	09-02-0019	LBL ATWRK TRI-FLO LOGO	1
9	102349	PLT LDCL ATTACH	1

ASSEMBLY SLIDE GATE 6.0 SQUARE SC (12-04-0045 REV A1)

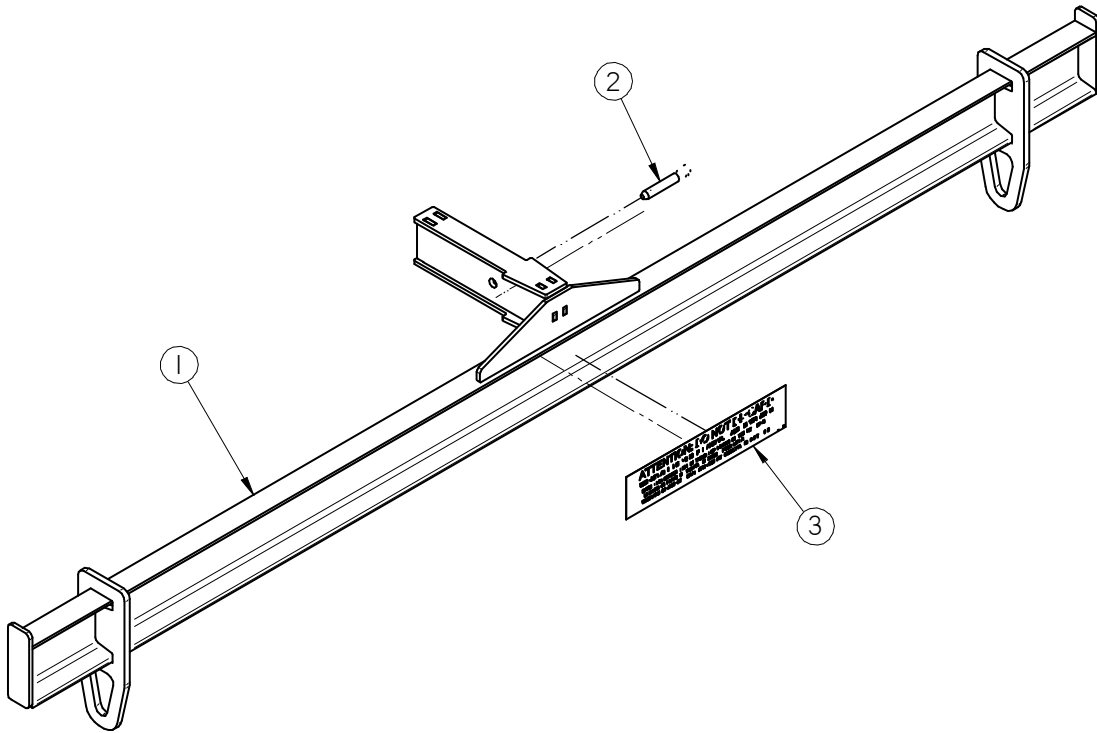


ASSEMBLY SLIDE GATE 6.0 SQUARE SC (12-04-0045 REV A1)

PART #		12-04-0045 REV A1	
Item #	Part #	Description	Qty
1	02-16-0044	FTTG PUSH 90 DEG .250OD X .250 NPT	2
2	03-08-0380	CONN TRCK YP2-RS 4.4T-8/2PKG3M-0.3	1
3	03-17-0041	CLEVIS ASSY BIMBA D-8313-A	1
4	03-17-0093	CYL AIR 1.75 X 7 MG PISTON	1
5	03-17-0148	SW MAG REED MRS-.087-BLQ-24	2
6	05-07-0370	WDMT DSCHG 6.00IN SQ SLGT	1
7	05-10-3751	PLT SLGT UHMW TOP 6.00IN SQ	1
8	05-10-3752	PLT SLGT 6.00IN SQ	1
9	05-10-3753	STOP UHMW SLGT 6.00IN SQ	1
10	05-10-3754	PLT UHMW LOWER SLGT 6.00IN SQ	1
11	05-10-3755	GUIDE UHMW SIDE SLGT 6.00IN SQ	2
12	06-01-0128	BOLT CRG .375-16 X 1.50 ZP GR5	7
13	06-03-0003	NUT NYL LOCK .375-16 ZP GR5	7
14	102ACC	PLT SLGT BODY 6.00IN SQ	1

TRI-FLO® WITH SERVO

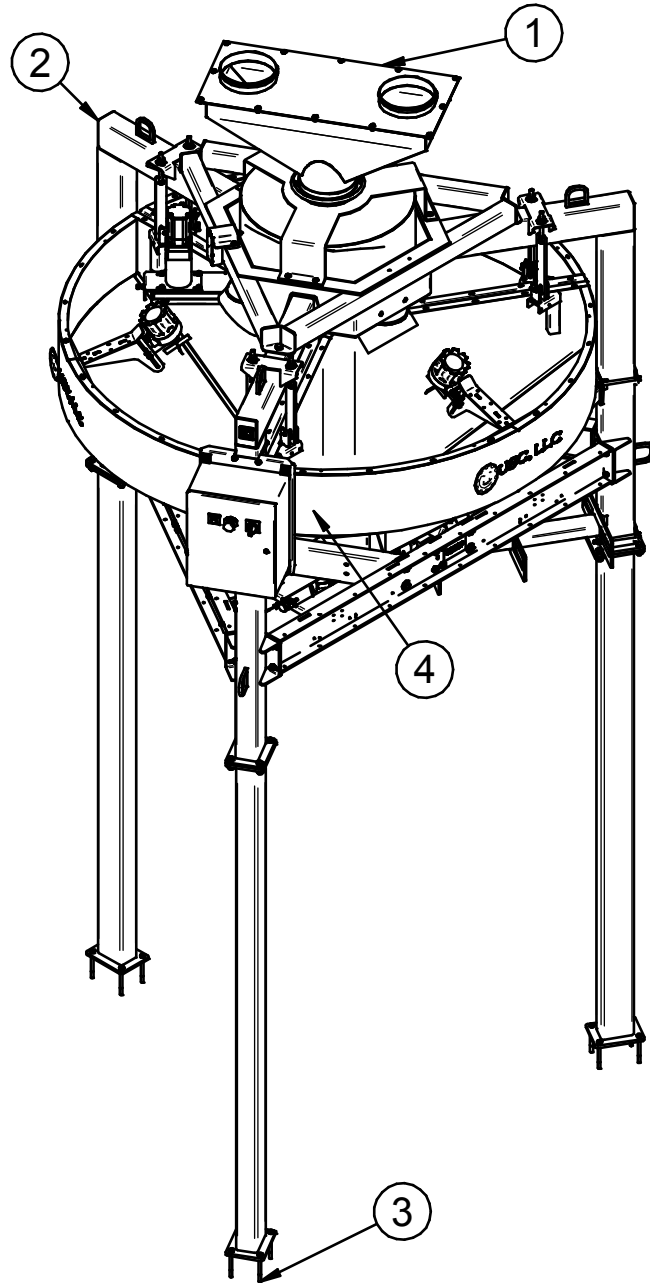
KIT WEIGHT BAR SC (13-05-0263 REV A0)



PART #		13-05-0263 REV A0	
Item #	Part #	Description	Qty
1	05-09-0040	WDMT WGH BAR TRI-FLOW	1
2	06-09-0070	PIN SPGLD QCK REL RING GRIP 0.5DIA	1
3	09-02-0017	LBL ATWRK ATT SCALE BAR TRI-FL	1

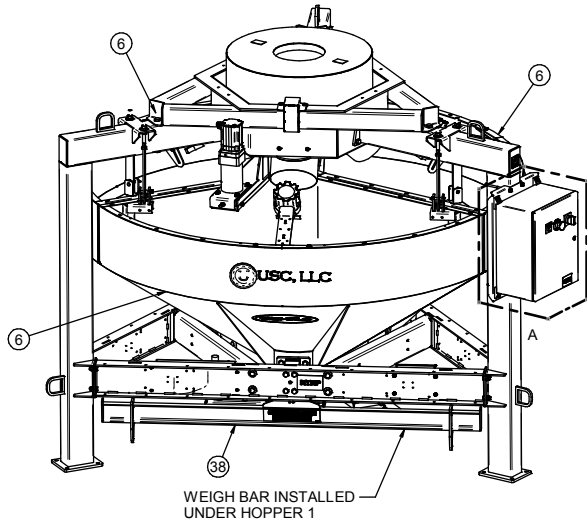
TRI-FLO® WITH SERVO

HIGH CAPACITY TRI-FLO®

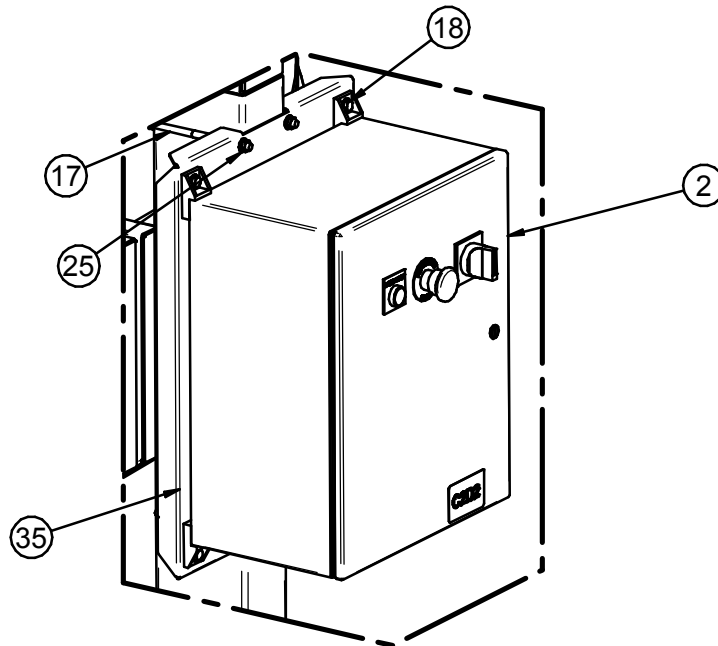
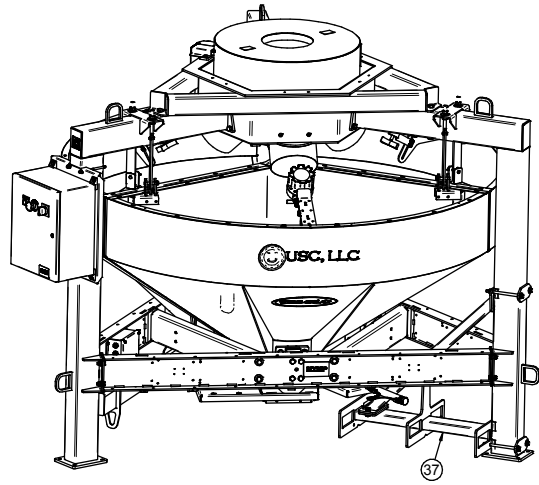


PART #	TFHC			
Item #	Part #	Description	Qty	See Page
1	ASSORTED	TRI-FLO HIGH CAPACITY INLET	1	28-29
2	05-07-1010	TRI-FLO V4 HIGH CAPACITY	1	35
3	ASSORTED	KIT LEG TRI-FLO	1	53-58
4	ASSORTED	KIT TRI-FLO OUTLET HIGH CAPACITY	1	62-63

HIGH CAPACITY MAIN UNIT (05-07-1010 REV B0)



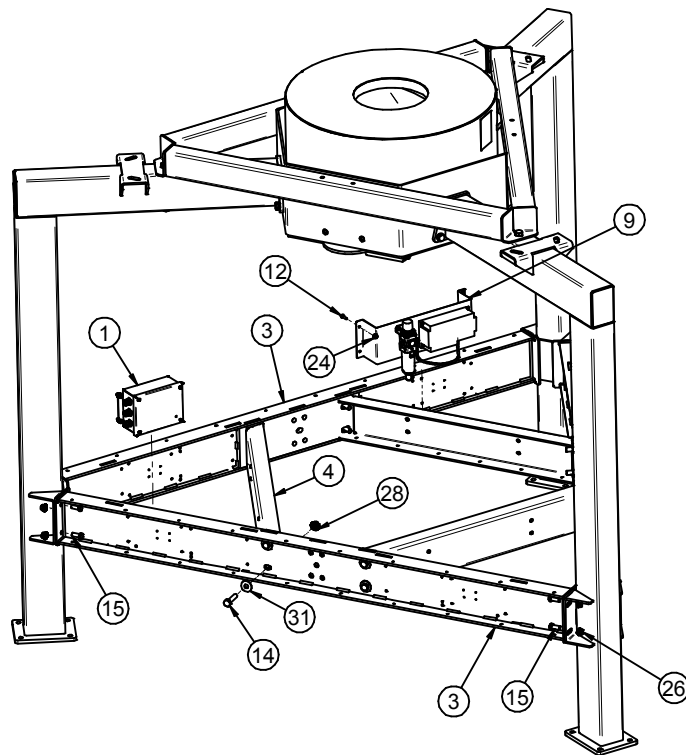
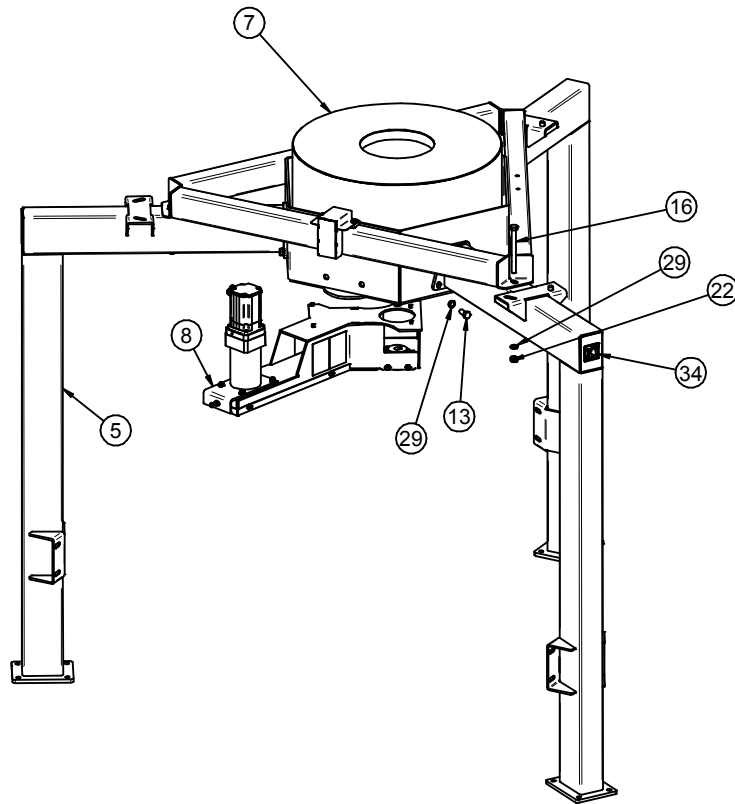
WEIGH BAR INSTALLED
UNDER HOPPER 1



DETAIL A

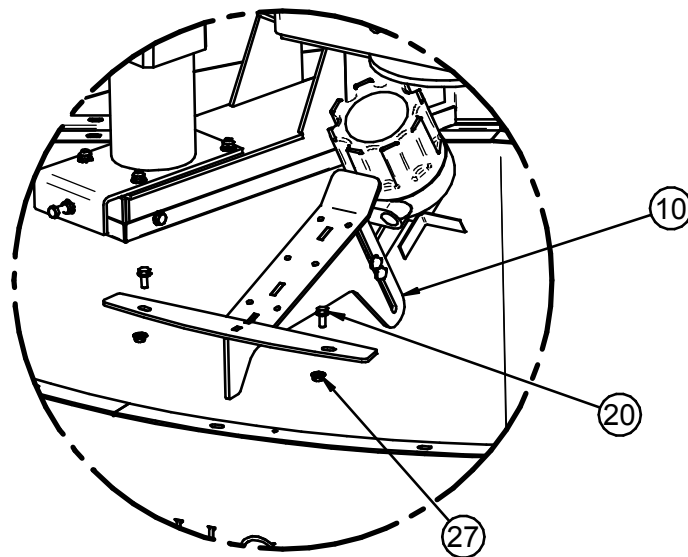
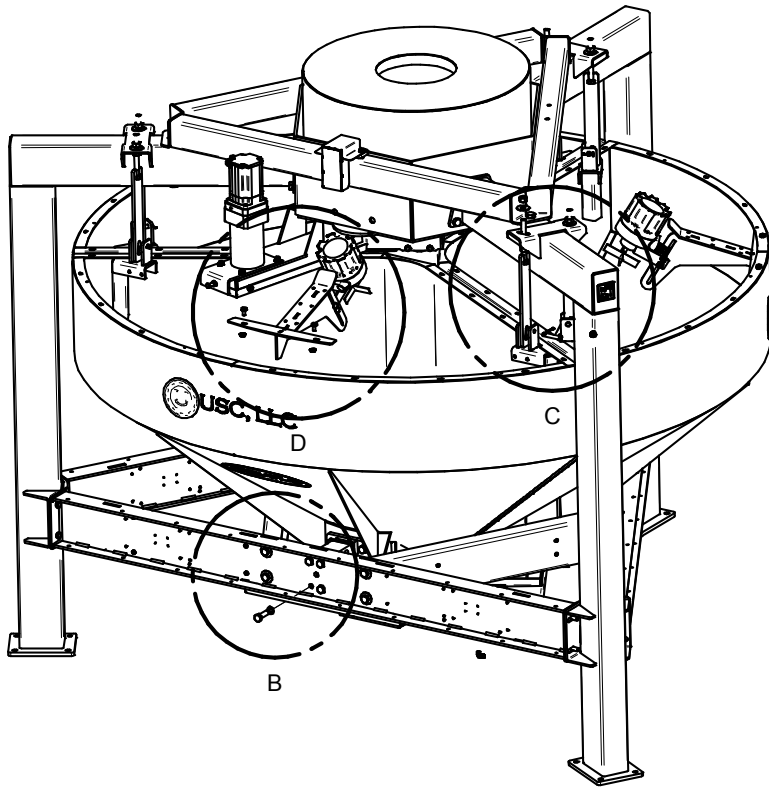
TRI-FLO® WITH SERVO

HIGH CAPACITY MAIN UNIT (05-07-1010 REV B0)



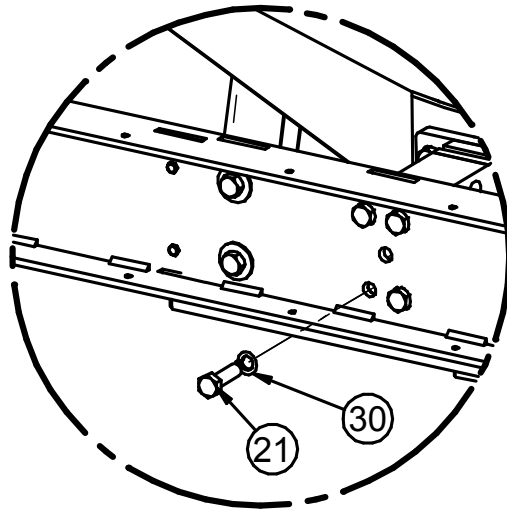
TRI-FLO® WITH SERVO

HIGH CAPACITY MAIN UNIT (05-07-1010 REV B0)

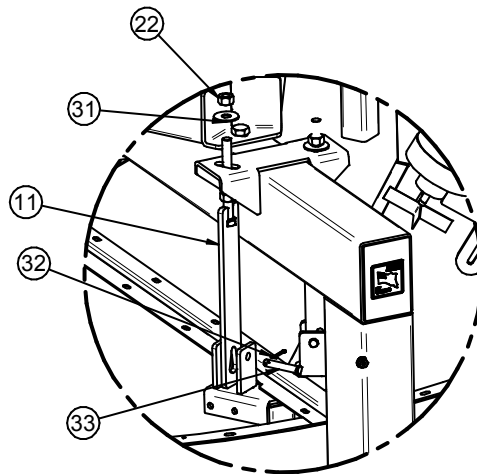


DETAIL D

HIGH CAPACITY MAIN UNIT (05-07-1010 REV B0)



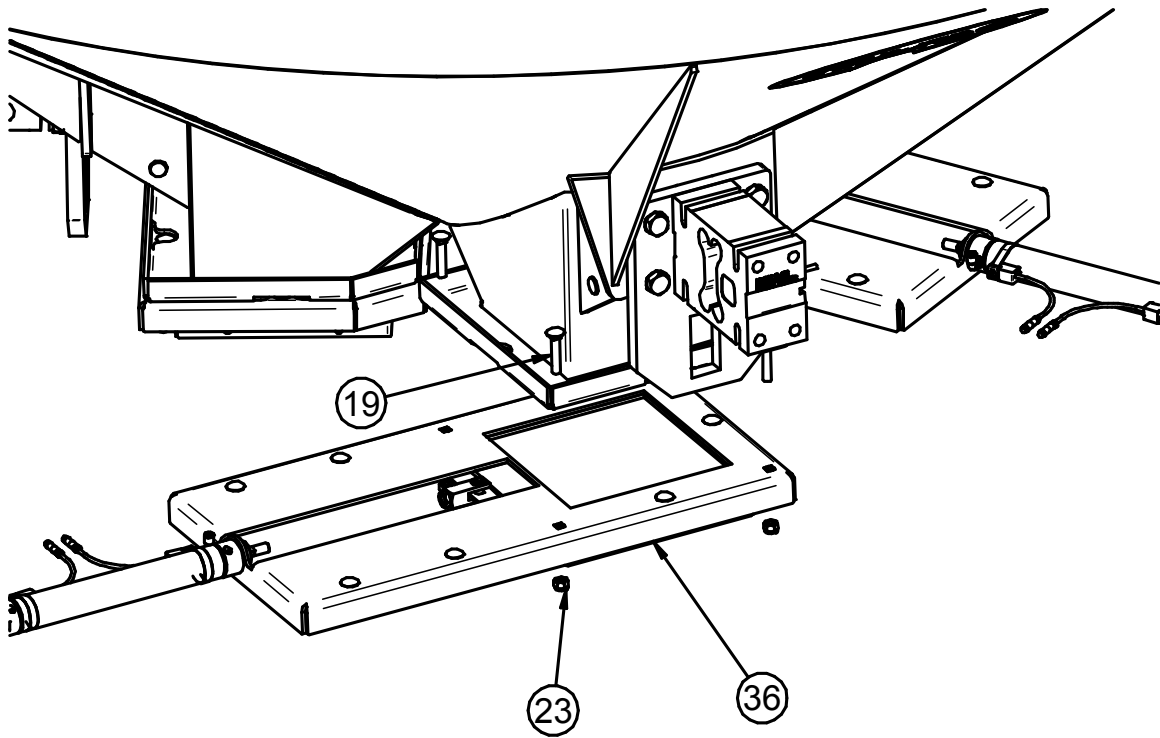
DETAIL B



DETAIL C

TRI-FLO® WITH SERVO

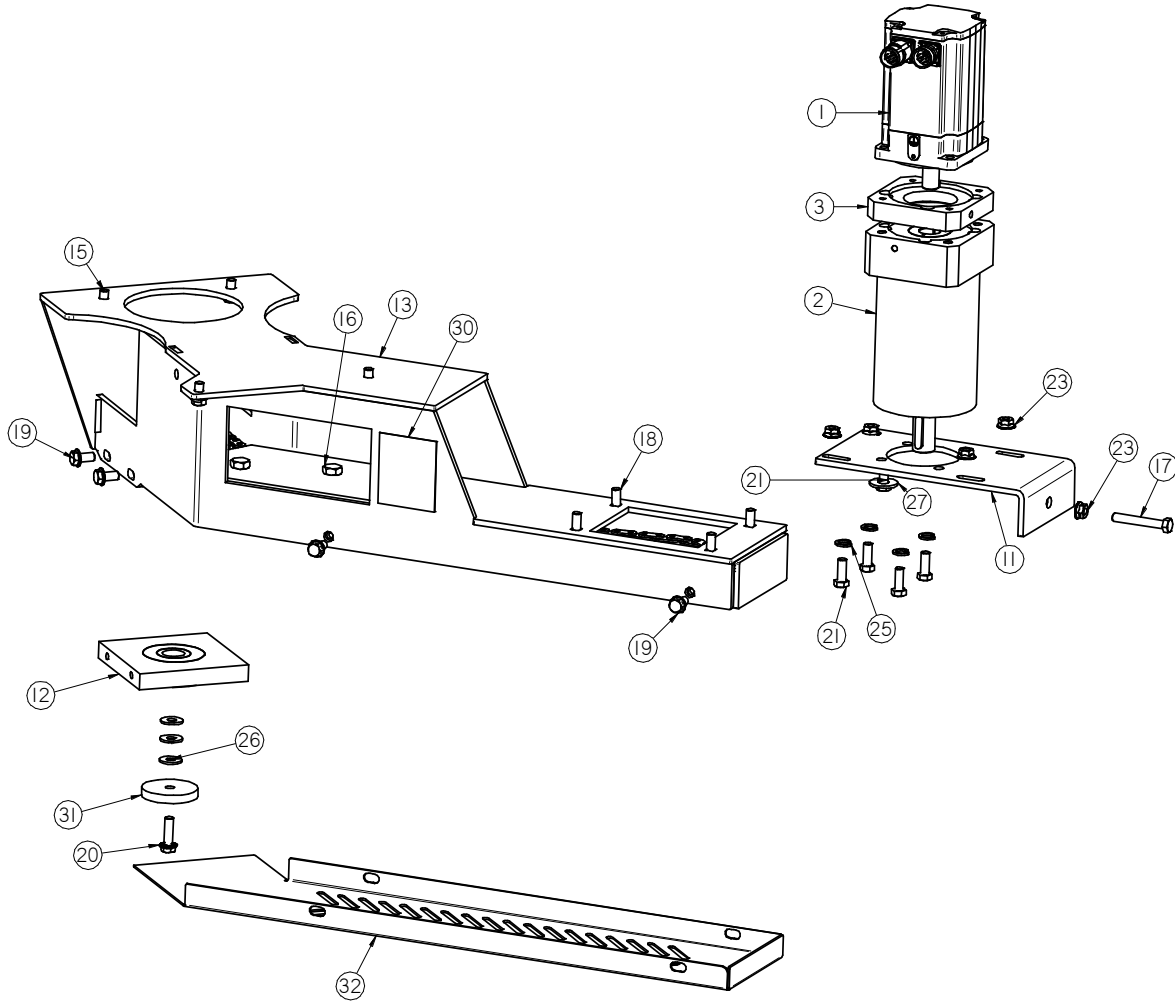
HIGH CAPACITY MAIN UNIT (05-07-1010 REV B0)



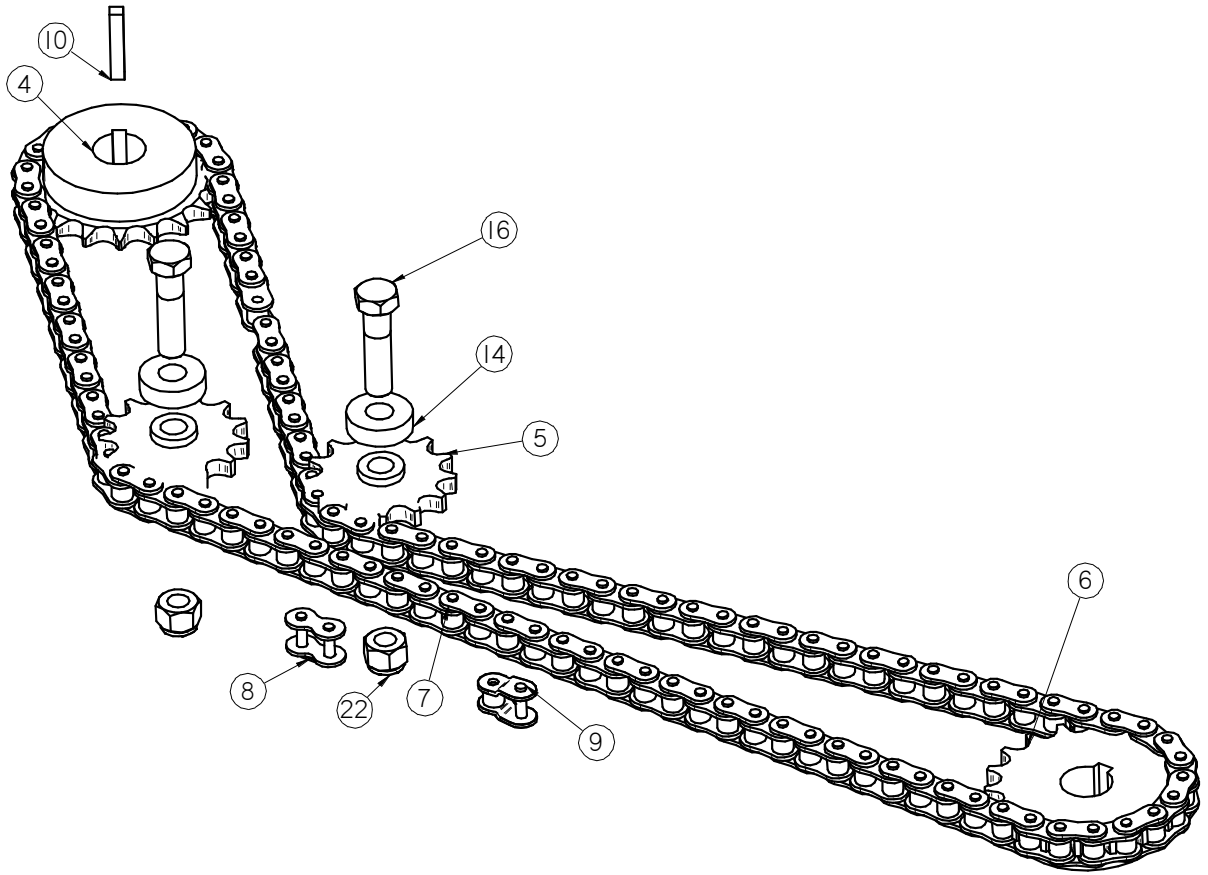
HIGH CAPACITY MAIN UNIT (05-07-1010 REV B0)

PART #		05-07-1010 REV B0		
Item #	Part #	Description	Qty	See Page
1	03-12-0364	PNL LOAD CELL JCT BOX TRI FLO	1	
2	03-12-0552	PNL CNTL V4 TRI-FLO SERVO DRV PNL	1	
3	05-03-0900	WDMT LEG BRACE CNTNS FLOW SYSTEM	3	
4	05-03-1008	WDMT BRACE LDCL PLT	3	
5	05-05-0156	WDMT LEG CNTNS FLOW WH SYS OPEN TOP	3	
6	05-07-0889	ASSY HOPP TRI FLO	3	47
7	05-07-0891	ASSY DIST TRI FLO V4 HC	1	44
8	05-07-0917	ASSY SERVO DRV TRI FLO	1	41
9	05-07-0969	ASSY SMC VLV & REGL TRI FLO V4	1	51
10	05-07-0974	ASSY HIGH LVL INDI TRI FLO V4	3	50
11	05-09-0045	WDMT HOPP SUPP STRAP TRI-FLO	6	
12	06-01-0007	BOLT .250-20 X 1.00 ZP GR5	4	
13	06-01-0031	BOLT .625-11 X 1.50 ZP GR5	6	
14	06-01-0075	BOLT .625-11 X 2.50 ZP GR5	12	
15	06-01-0080	BOLT .500-13 X 1.25 ZP GR5	12	
16	06-01-0096	BOLT .625-11 X 7.00 ZP GR5	3	
17	06-01-0113	BOLT U .375-16 X 4.00 X 6.625 ZP	2	
18	06-01-0124	BOLT FLG .375-16 X .750 ZP GR5	4	
19	06-01-0136	BOLT CRG .375-16 X 2.00 ZP GR5	9	
20	06-01-0138	BOLT FLG .3125-18 X .750 ZP GR5	6	
21	06-01-0230	BOLT M16-2.00 X 50MM FTH	12	
22	06-02-0005	NUT FULL .625-11 ZP GR5	15	
23	06-03-0003	NUT NYL LOCK .375-16 ZP GR5	9	
24	06-03-0013	NUT LOCK FLG .250-20 ZP GR5	4	
25	06-03-0014	NUT LOCK FLG .375-16 ZP GR5	8	
26	06-03-0015	NUT LOCK FLG .500-13 ZP GR5	12	
27	06-03-0019	NUT LOCK FLG .313-18 ZP GR5	6	
28	06-03-0029	NUT WHIZ LOCK FLG .625-11 GR5	12	
29	06-04-0005	WSHR LOCK SPLT .625 ZP	9	
30	06-04-0018	WSHR LOCK SPLT M16 ZP	12	
31	06-05-0006	WSHR FLAT .625 ZP	18	
32	06-09-0018	PIN CTRR .125 X 1.50 SS	6	
33	06-09-0058	PIN CLVS .500 X 2.75 PLN	6	
34	09-01-0003	ATWK LBL MADE IN USA YEL 2.50X2.50	1	
35	102B71	BRKT TRI-FLO PNL	1	
36	12-04-0042	SLIDE GATE 8.00 SQ TRI-FLO	3	48
37	13-05-0268	KIT FORK PCKT ASSY TRI-FLOW	1	52

ASSEMBLY SERVO DRIVE HC (05-07-0917 REV A1)



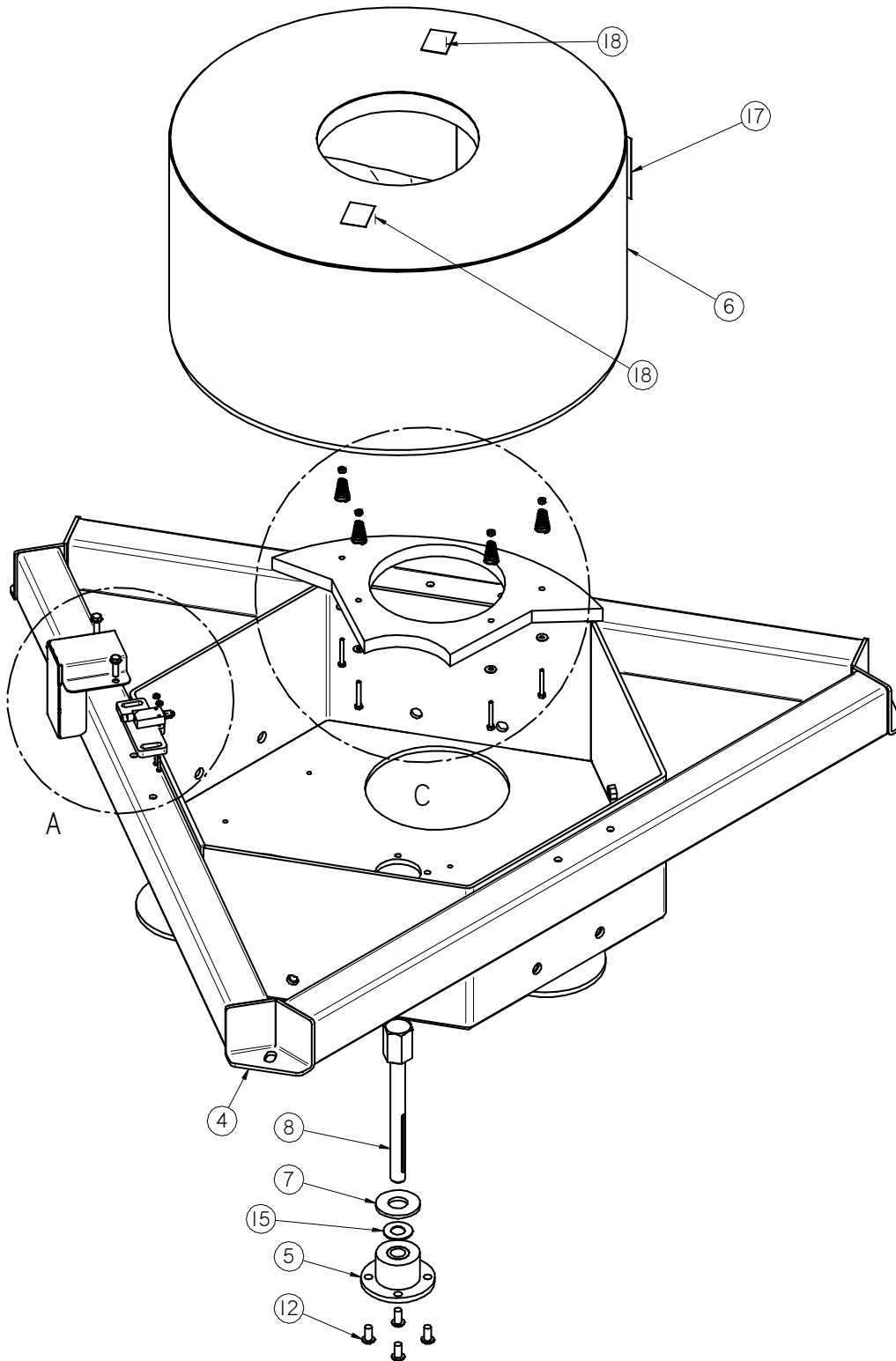
ASSEMBLY SERVO DRIVE HC (05-07-0917 REV A1)



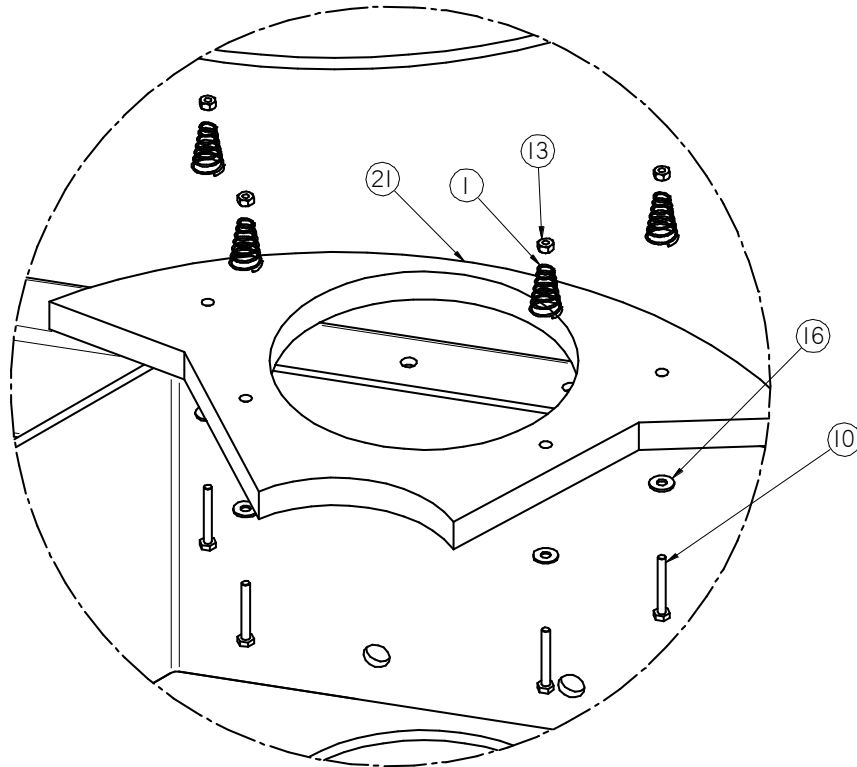
ASSEMBLY SERVO DRIVE HC (05-07-0917 REV A1)

PART #		05-07-0917 REV A1	
Item #	Part #	Description	Qty
1	01-01-0203	SERVO MTR BMH1002T27A2A	1
2	01-01-0204	SERVO MTR GEARBOX 120MM RATIO 40	1
3	01-01-0205	SERVO MTR GEARBOX KIT SIZE 120 BMH	1
4	01-02-0096	SPKT 18T 50P 1.00ID FNSH BORE	1
5	01-02-0115	SPKT 13T 50P .500ID IDLER	2
6	01-02-0122	SPKT #50 18T 25MM BORE 8MM KEYWAY	1
7	01-04-0002	CHAIN RLR 50	5.708
8	01-04-0005	CHAIN CTNG LINK 50P	1
9	01-04-0007	CHAIN OFFSET LINK 50P	1
10	01-10-0005	KEY .250 X 1.50 CS	1
11	05-03-1523	WDMT BRKT GBOX MNT SERVO DRV	1
12	05-04-0120	ASSY LOWER SHAFT CNTNS FLOW SYSTEM	1
13	05-04-0202	WDMT SLTR DRV CNTNS FLOW SYSTEM	1
14	05-10-3811	WSHR .500 ID X 1.25 OD X .375 THK	2
15	06-01-0015	BOLT .375-16 X .750 ZP GR5	4
16	06-01-0027	BOLT .500-13 X 2.00 ZP GR5	2
17	06-01-0071	BOLT .375-16 X 2.50 ZP GR5	1
18	06-01-0115	BOLT CRG .375-16 X 1.00 ZP GR5	4
19	06-01-0124	BOLT FLG .375-16 X .750 ZP GR5	8
20	06-01-0189	BOLT FLG .375-16 X 1.250 ZP GR5	1
21	06-01-0295	BOLT M10-1.5 X 25MM ZP	5
22	06-03-0004	NUT NYL LOCK .500-13 ZP GR5	2
23	06-03-0014	NUT LOCK FLG .375-16 ZP GR5	5
24	06-04-0003	WSHR LOCK SPLT .375 ZP	4
25	06-04-0011	WSHR LOCK SPLT .438 ZP	4
26	06-05-0004	WSHR FLAT .375 ZP	3
27	06-05-0020	WSHR FLAT .438 ZP	1
28	09-02-0001	ATWK LBL DANGER FINGERS	1
29	09-02-0002	ATWK LBL DANGER GRD	1
30	09-02-0009	ATWK LBL WARNING ROTATING PARTS	1
31	10224D	PLT WSHR	1
32	10561F	GRD SLTR CHAIN DRV	1

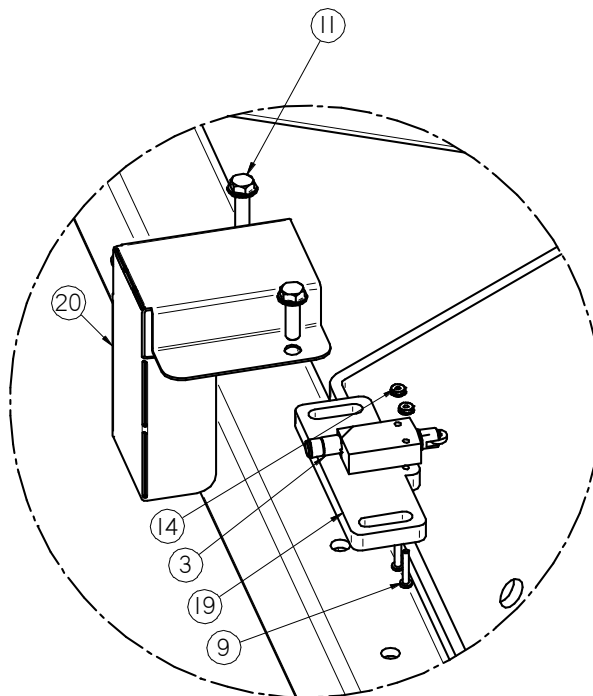
ASSEMBLY DISTRIBUTOR HC (05-07-0891 REV A2)



ASSEMBLY DISTRIBUTOR HC (05-07-0891 REV A2)



DETAIL C

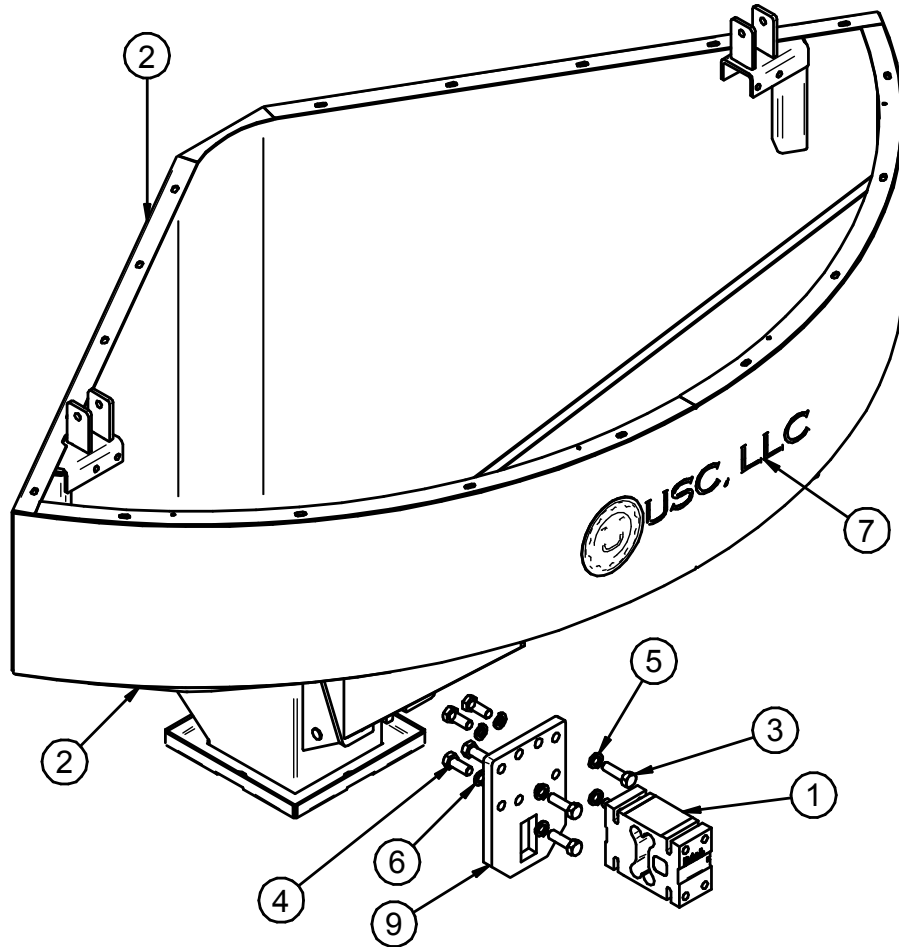


DETAIL A

ASSEMBLY DISTRIBUTOR HC (05-07-0891 REV A2)

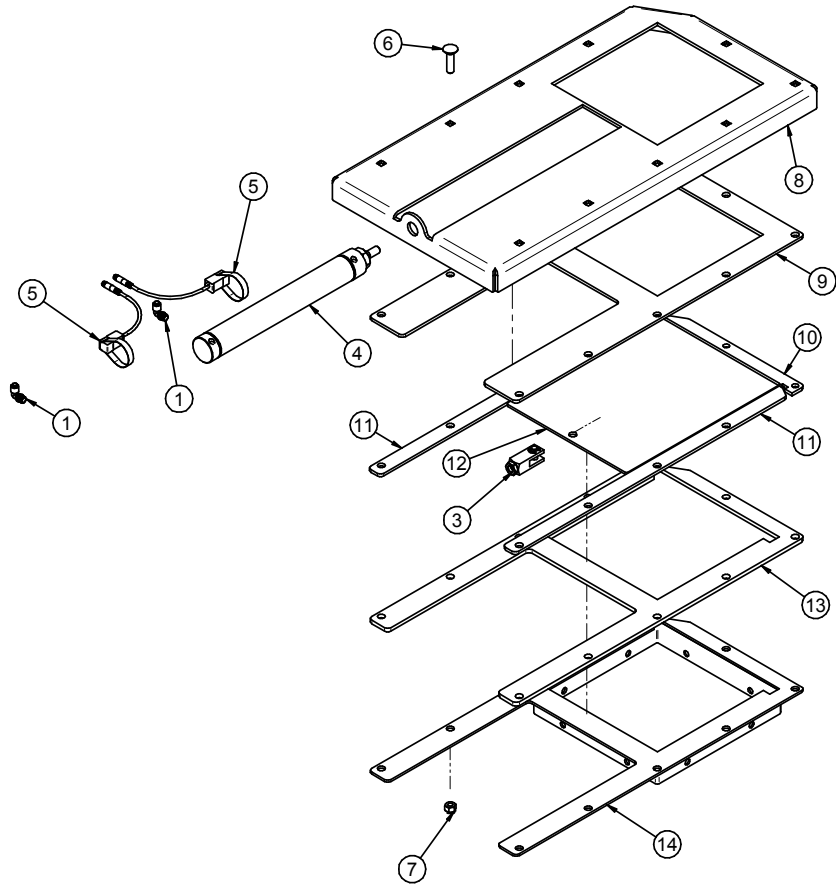
PART #		05-07-0891 REV A2	
Item #	Part #	Description	Qty
1	01-04-0094	SPG CNCL COMP .26ID X .055 X 1.50	4
2	03-08-0316	CONN TRCK RK4.4T-8-RS4.4T/S760/S771	1
3	03-10-0125	SW LMT SCHDR XCMD2102C12	1
4	05-03-1667	WDMT SLTR HSG CNTNS FLOW SYSTEM SMW	1
5	05-04-0118	ASSY SLTR BRG HSG CNTNS FLOW SYSTEM	1
6	05-07-0892	WDMT SLTR SPOUT CNTNS FLOW SYS 30U	1
7	05-10-3821	WSHR .25THK X 1.313ID X 3.00OD	1
8	05-11-0412	SHAFT DIST DRV 1.75 HEX	1
9	06-01-0094	SCRW MACH 8-32 X 1.00 ZP	2
10	06-01-0097	BOLT .250-20 X 2.00 ZP GR5	4
11	06-01-0189	BOLT FLG .375-16 X 1.250 ZP GR5	2
12	06-01-0224	BOLT CAP .500-13 X 1.00 BTNH	4
13	06-02-0001	NUT FULL .250-20 ZP GR5	4
14	06-02-0034	NUT KLOCK 8-32 ZP	4
15	06-04-0016	WSHR THRST 1.0 X 1.99 X .088 PCMPST	1
16	06-05-0001	WSHR FLAT .250 ZP	4
17	09-02-0001	ATWK LBL DANGER FINGERS	1
18	09-02-0022	ATWK LBL DANGER AUTO START	2
19	10215E	PLT DIST PROOF SW BRKT CS	1
20	103929	SWITCH GUARD	1
21	105270	PLT UHMW DIST SLIDING SEAL	1

ASSEMBLY HOPPER HC (05-07-0889 REV A1)



PART #		05-07-0889 REV A1	
Item #	Part #	Description	Qty
1	03-19-0042	LDCL VISHAY 1320 2200LB CLASS III	1
2	05-03-1666	WDMT HOPP WEDGE 37 UNIT OPEN TOP	1
3	06-01-0032	BOLT .625-11 X 2.00 ZP GR5	4
4	06-01-0228	BOLT M16-2.00 X 40MM FTH	4
5	06-04-0005	WSHR LOCK SPLT .625 ZP	4
6	06-04-0018	WSHR LOCK SPLT M16 ZP	4
7	09-01-0043	ATWK LBL USC 22.00 X 5.75 PRO-CUT	1
8	09-02-0019	LBL ATWRK TRI-FLO LOGO	1

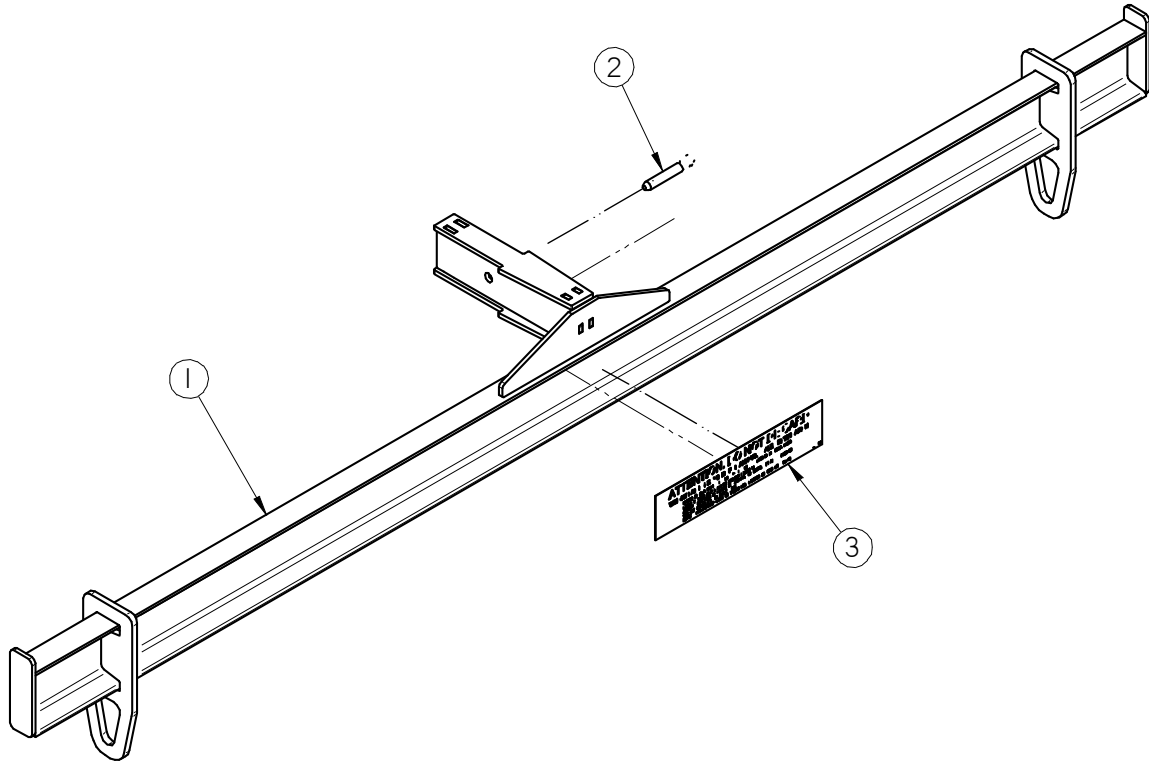
ASSEMBLY SLIDE GATE 8.0 SQUARE HC (12-04-0042 REV A4)



PART #		12-04-0042 REV A4	
Item #	Part #	Description	Qty
1	02-16-0046	FTTG PUSH 90 DEG .250 OD X .125 NPT	1
2	03-08-0380	CONN TRCK YP2-RS 4.4T-8/2PKG3M-0.3	1
3	03-17-0046	CLEVIS ASSY BIMBA D-8311-A	1
4	03-17-0067	CYL AIR 9"STROKE 1.5 IN BORE DBL	1
5	03-17-0149	SW MAG REED MRS-.087-BLQ-17	2
6	06-01-0128	BOLT CRG .375-16 X 1.50 ZP GR5	7
7	06-03-0003	NUT NYL LOCK .375-16 ZP GR5	7
8	105256	PLT SLGT BODY 8.00IN SQ	1
9	105257	PLT SLGTUHMW TOP 8.00IN SQ	1
10	105258	STOP UHMW SLGT 8.00IN SQ	1
11	105259	GUIDE UHMW SIDE SLGT 8.00IN SQ	2
12	10525B	PLT SLGT 8.00IN SQ	1
13	10525C	PLT UHMW LOWER SLGT 8.00IN SQ	1
14	10525D	WDMT DSCHG 8.00IN SQ SLGT	1

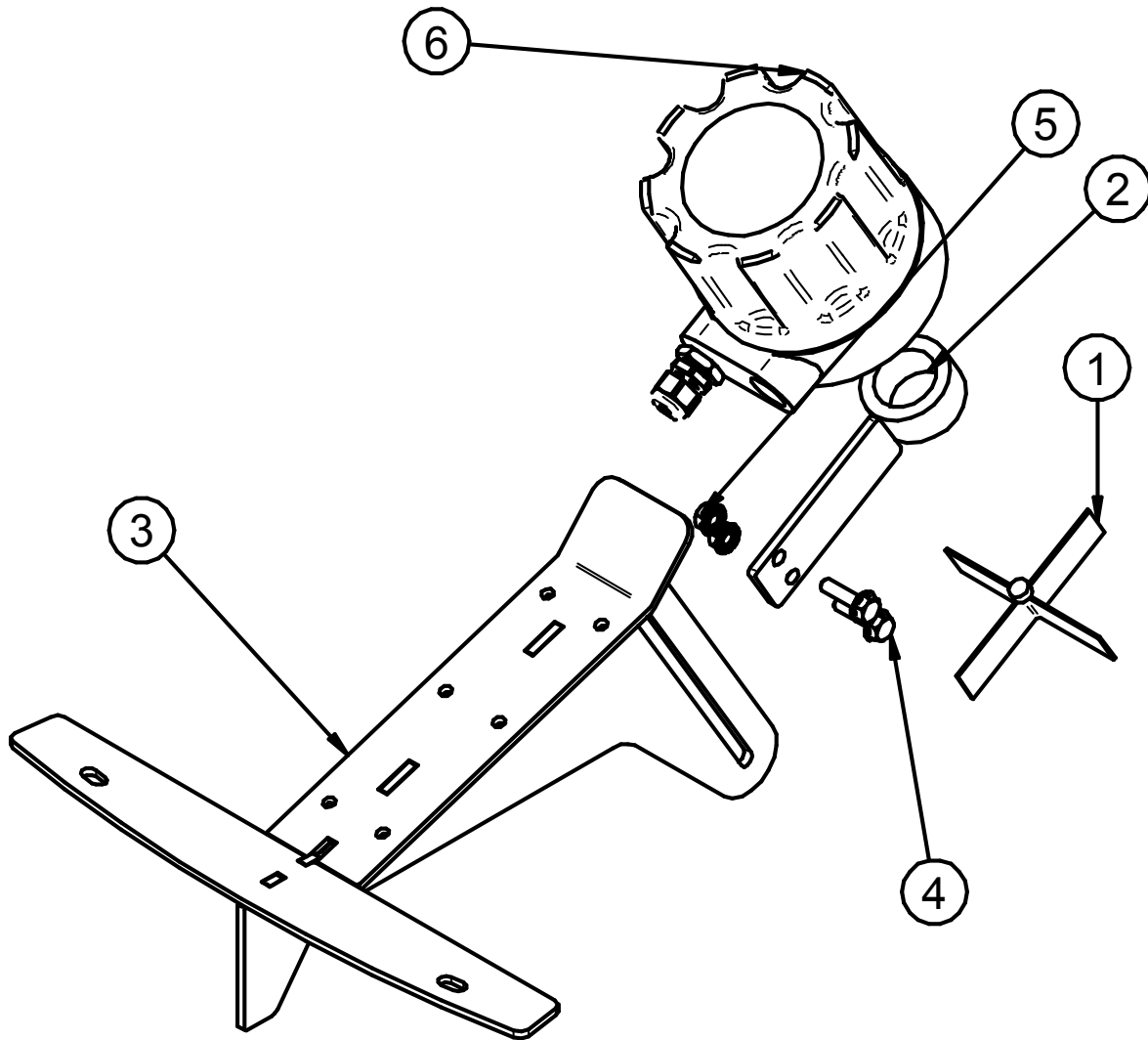
TRI-FLO® WITH SERVO

KIT WEIGHT BAR HC (13-05-0598 REV A0)



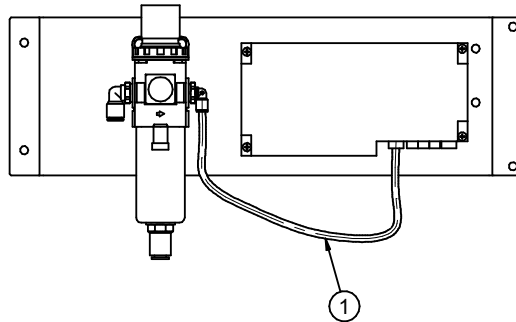
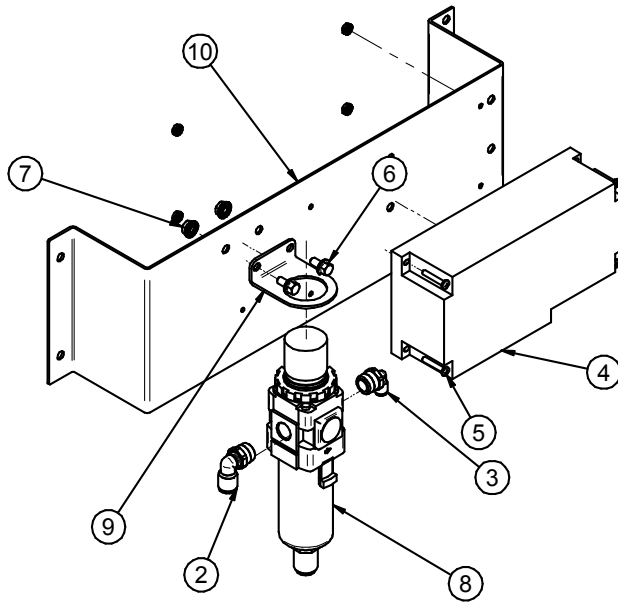
PART #		13-05-0598 REV A0	
Item #	Part #	Description	Qty
1	05-09-0054	WDMT WGH BAR TRI-FLOW	1
2	06-09-0070	PIN SPGLD QCK REL RING GRIP 0.5DIA	1
3	09-02-0017	LBL ATWRK ATT SCALE BAR TRI-FL	1

ASSEMBLY HIGH LEVEL INDICATOR (05-07-0974 REV A0)



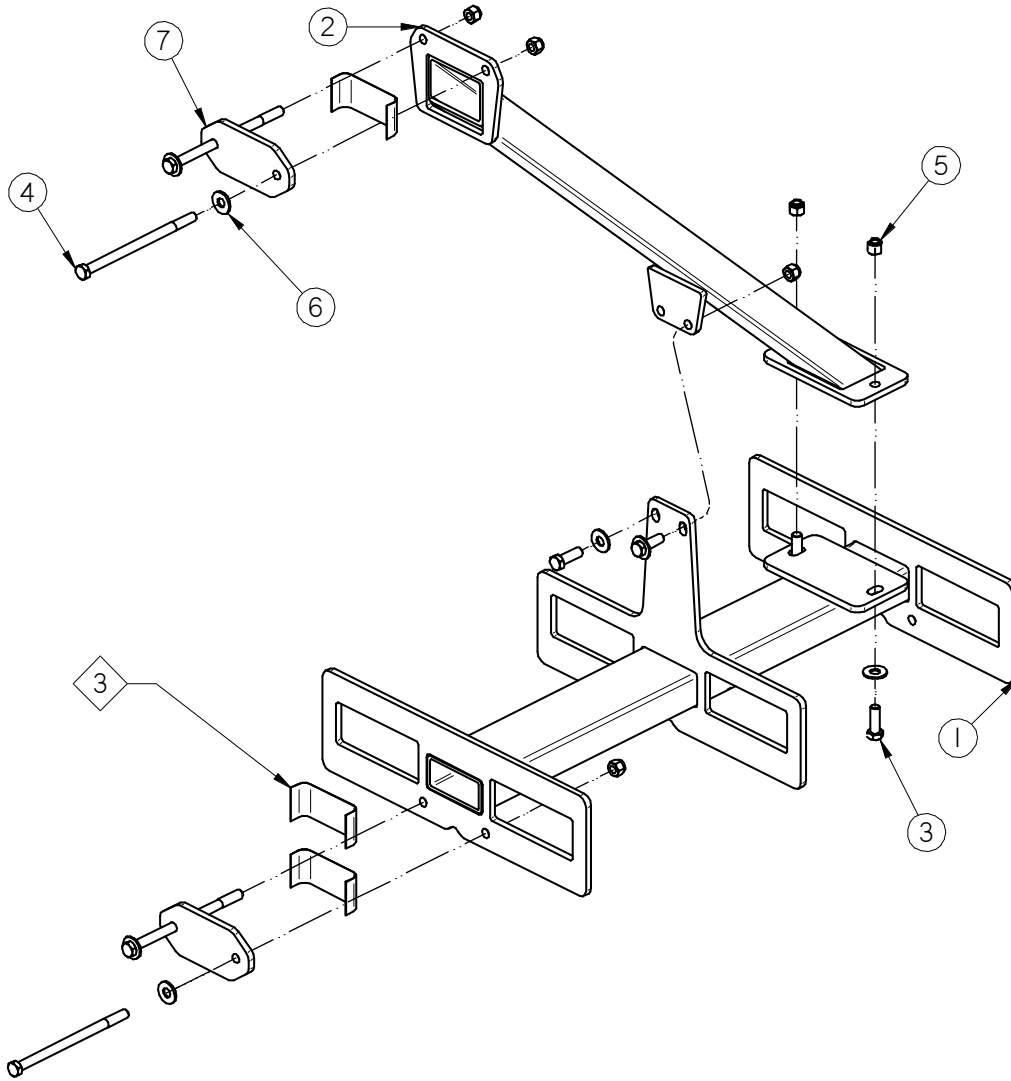
PART #		05-07-0974 REV A0	
Item #	Part #	Description	Qty
1	03-19-0017	PDL 4 VANE LVL INDI PN 1-4156	1
2	05-04-0115	WDMT LVL INDI ADJ. FLG	1
3	05-04-0175	WDMT BRKT LVL INDI ADJ	1
4	06-01-0189	BOLT FLG .375-16 X 1.250 ZP GR5	2
5	06-03-0014	NUT LOCK FLG .375-16 ZP GR5	2
6	13-04-0250	KIT SW LVL INDI TRI-FLO V4	1

ASSEMBLY AIR VALVE AND REGULATOR (05-07-0969 REV A0)



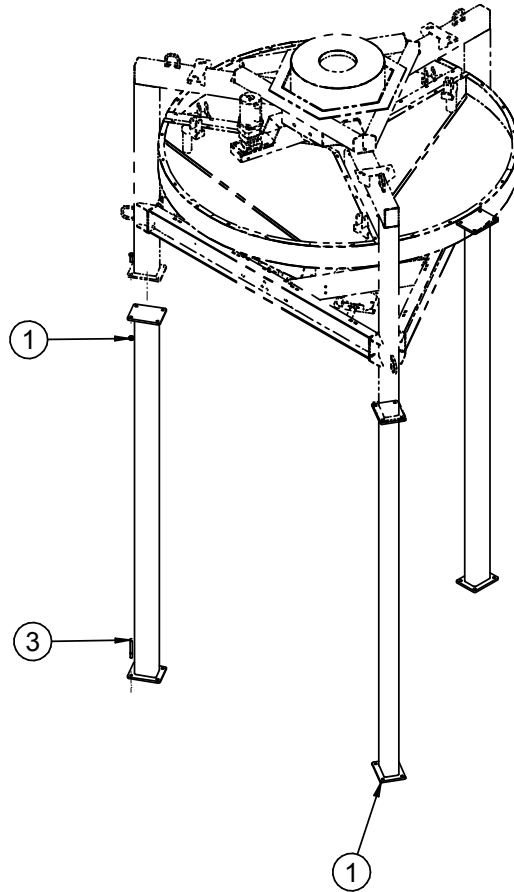
PART #		05-07-0969 REV A1	
Item #	Part #	Description	Qty
1	02-03-0051	TBG .250 OD NYL BLK	1.167
2	02-16-0036	FTTG PUSH 90 DEG .375OD X.375NPT ML	1
3	02-16-0049	FTTG PUSH 90 DEG .25 OD X .375 NPT	1
4	03-17-0145	VLV SOL SMC MANIFOLD TRIFLO V4 ASSY	1
5	06-01-0094	SCRW MACH 8-32 X 1.00 ZP	4
6	06-01-0299	BOLT FLG .250-20 X .500 ZP GR5	2
7	06-03-0013	NUT LOCK FLG .250-20 ZP GR5	2
8	07-03-0023	REGULATOR W/FLTR & DRAIN .375 NPT	1
9	07-03-0026	REGL BRACKET AR33P-270AS	1
10	105BF0	PLT VLV MNT SMC TRI-FLO	1

KIT FORK LIFT POCKETS SC (13-05-0268 REV A1)



PART #		13-05-0268 REV A1	
Item #	Part #	Description	Qty
1	05-09-0043	WDMT FORK PCKT BASE	1
2	05-09-0044	WDMT FORK PCKT BRACE	1
3	06-01-0025	BOLT .500-13 X 1.50 ZP GR5	4
4	06-01-0268	BOLT .500-13 X 8.00 ZP GR5	4
5	06-03-0004	NUT NYL LOCK .500-13 ZP GR5	8
6	06-05-0005	WSHR FLAT .500 ZP	8
7	102D5F	PLT CLAMP BASE	2

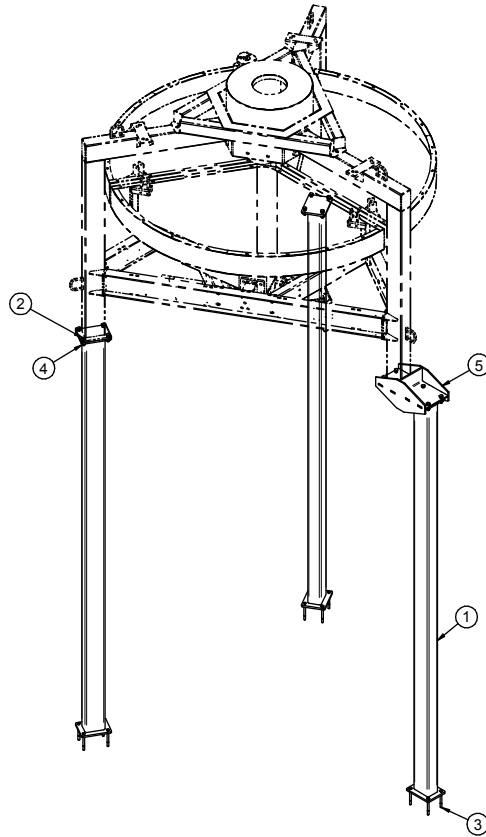
3 LEG KIT WITHOUT DIVERTER



PART #		3 LEG KIT	
Item #	Part #	Description	Qty
1	SEE CHART	WELDMENT LEG	3
2	06-01-0032	BOLT .625-11 X 2.00 ZP GR5	12
3	06-01-0179	BOLT .500-13 CONC ANCHOR ZP 5.500	12
4	06-03-0005	NUT NYL LOCK .625-11 ZP	12

LEG KITS			
PART #	LEG LENGTH	DISCH HT.	DESCRIPTION
05-03-1087	36	24	WDMT LEG TRI-FLO FLOOR
05-03-1912	58	30	WDMT LEG TRI-FLO FLOOR MTD LIW
05-03-1885	106	114	WDMT LEG TRI-FLO LPV LIW 12 EXT
05-03-1051	110	120	WDMT LEG TRI-FLO TRTR SMW 6" EXT
05-03-1105	117	125	WDMT LEG TRI-FLO TRTR SMW 12IN EXT
05-03-1976	126	134	WDMT LEG TRI-FLO TRTR SMW DVTR 12IN
05-03-1624	139	147	WDMT LEG TRI-FLO GUS 48IN TRTR
05-03-1744	145	153	WDMT LEG TRI-FLO HC LPV WB

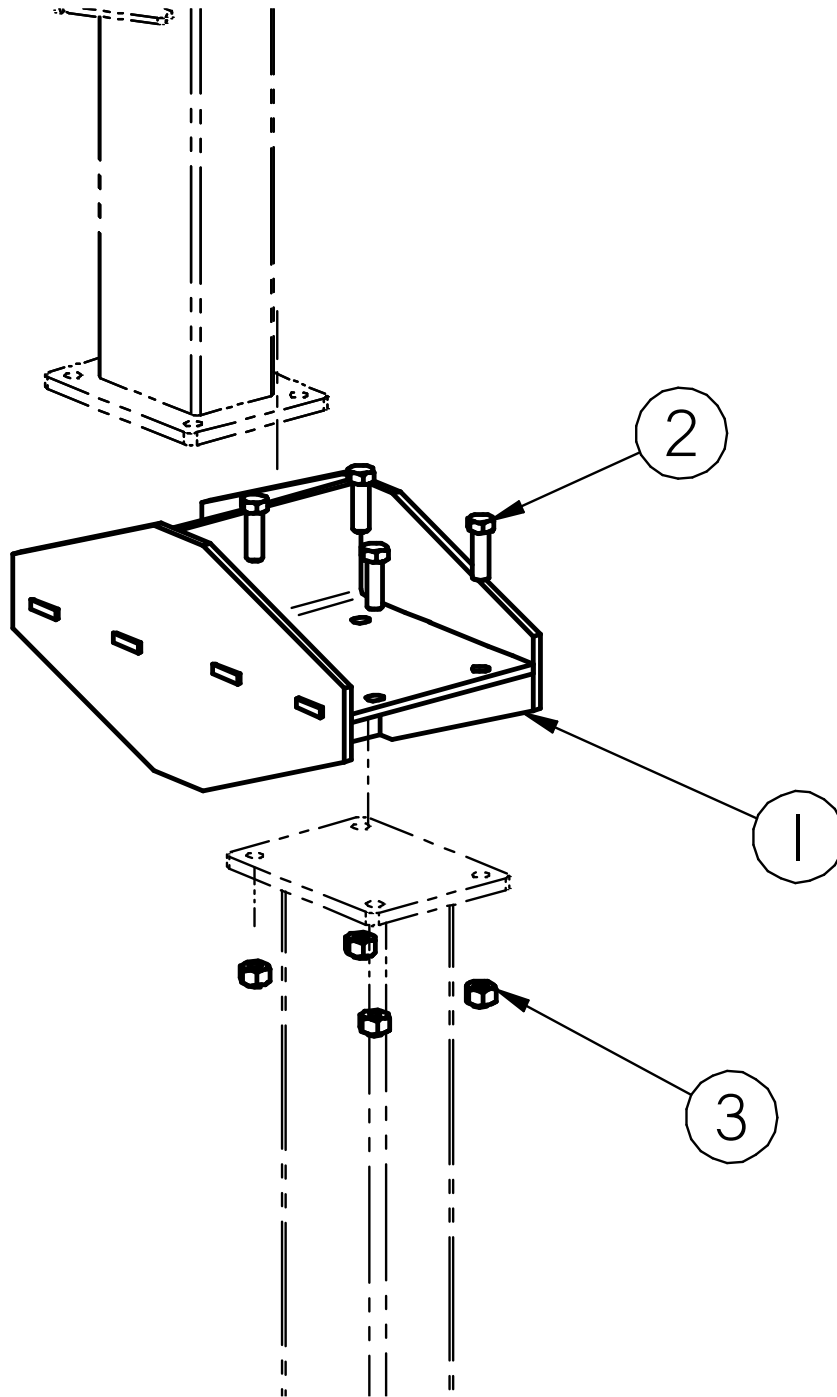
3 LEG KIT WITHOUT DIVERTER



PART #		3 LEG WITH DIVERTER		
Item #	Part #	Description	Qty	See Page
1	SEE CHART	WELDMENT LEG	4	
2	06-01-0032	BOLT .625-11 X 2.00 ZP GR5	28	
3	06-01-0179	BOLT .500-13 CONC ANCHOR ZP 5.500	16	
4	06-03-0005	NUT NYL LOCK .625-11 ZP	28	
5	13-05-0455	WELDMENT LEG OFFSET	1	58

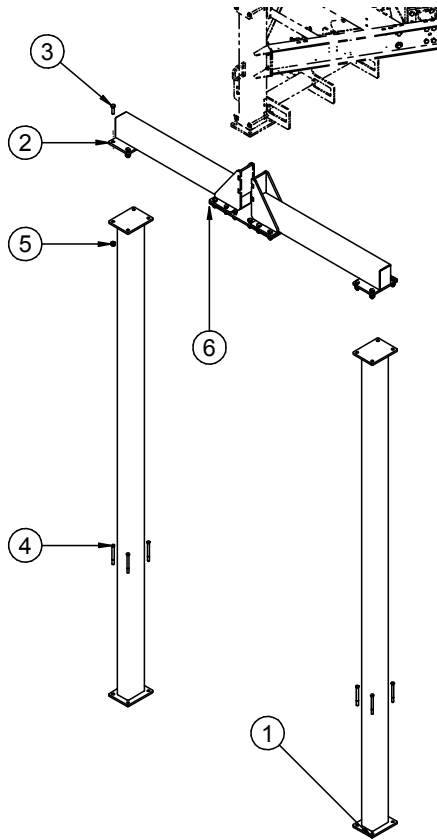
LEG KITS			
PART #	LEG LENGTH	DISCH HT.	DESCRIPTION
05-03-1087	36	24	WDMT LEG TRI-FLO FLOOR
05-03-1912	58	30	WDMT LEG TRI-FLO FLOOR MTD LIW
05-03-1885	106	114	WDMT LEG TRI-FLO LPV LIW 12 EXT
05-03-1051	110	120	WDMT LEG TRI-FLO TRTR SMW 6" EXT
05-03-1105	117	125	WDMT LEG TRI-FLO TRTR SMW 12IN EXT
05-03-1976	126	134	WDMT LEG TRI-FLO TRTR SMW DVTR 12IN
05-03-1624	139	147	WDMT LEG TRI-FLO GUS 48IN TRTR
05-03-1744	145	153	WDMT LEG TRI-FLO HC LPV WB

ASSEMBLY LEG OFFSET (13-05-0455 REV A0)



PART #		13-05-0455 REV A0	
Item #	Part #	Description	Qty
1	05-03-1618	WDMT TRI FLO LEG OFFSET	1
2	06-01-0032	BOLT .625-11 X 2.00 ZP GR5	4
3	06-03-0005	NUT NYL LOCK .625-11 ZP	4

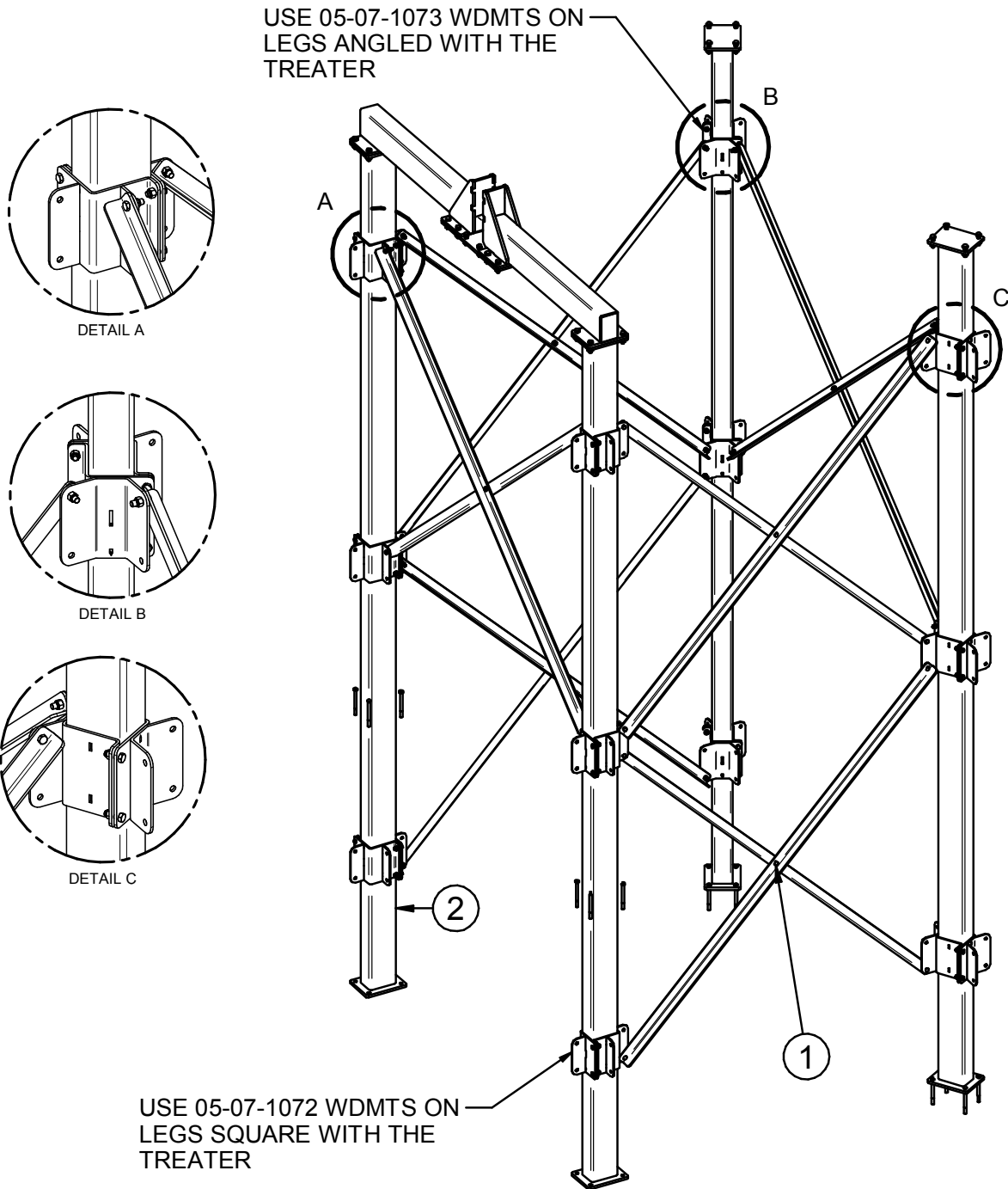
4 LEG KIT



PART #		4 LEG KIT	
Item #	Part #	Description	Qty
1	SEE CHART	WELDMENT LEG	4
2	05-07-0977	WDMT OFFSET LEG	2
3	06-01-0032	BOLT .625-11 X 2.00 ZP GR5	28
4	06-01-0179	BOLT .500-13 CONC ANCHOR ZP 5.500	16
5	06-03-0005	NUT NYL LOCK .625-11 ZP	28
6	105C26	OFFSET LEG SPLICE PLT	1

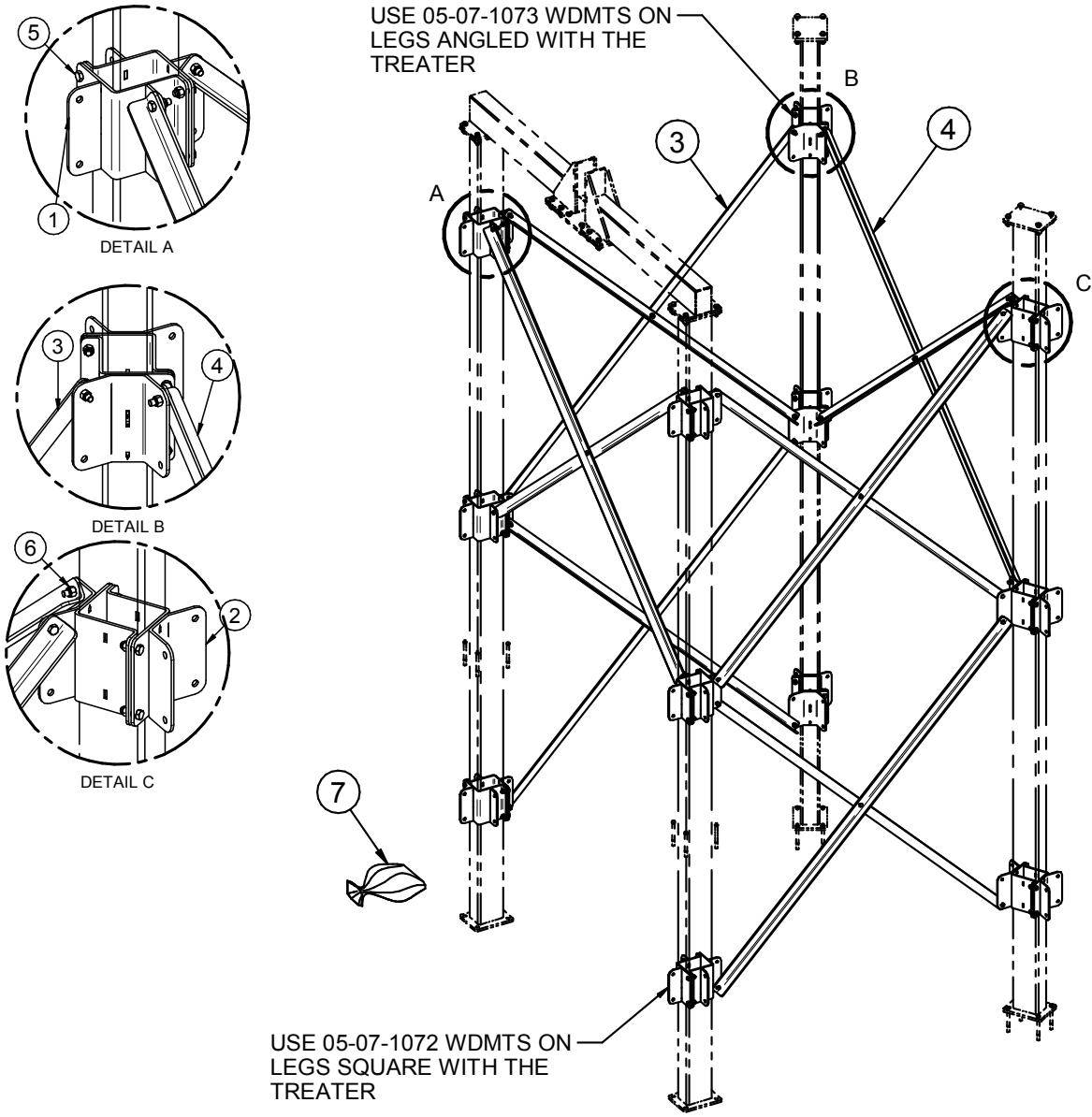
LEG KITS			
PART #	LEG LENGTH	DISCH HT.	DESCRIPTION
05-03-1087	36	24	WDMT LEG TRI-FLO FLOOR
05-03-1912	58	30	WDMT LEG TRI-FLO FLOOR MTD LIW
05-03-1885	106	114	WDMT LEG TRI-FLO LPV LIW 12 EXT
05-03-1051	110	120	WDMT LEG TRI-FLO TRTR SMW 6" EXT
05-03-1105	117	125	WDMT LEG TRI-FLO TRTR SMW 12IN EXT
05-03-1976	126	134	WDMT LEG TRI-FLO TRTR SMW DVTR 12IN
05-03-1624	139	147	WDMT LEG TRI-FLO GUS 48IN TRTR
05-03-1744	145	153	WDMT LEG TRI-FLO HC LPV WB

4 LEG KIT WITH BRACES (13-05-0939 REV A0)



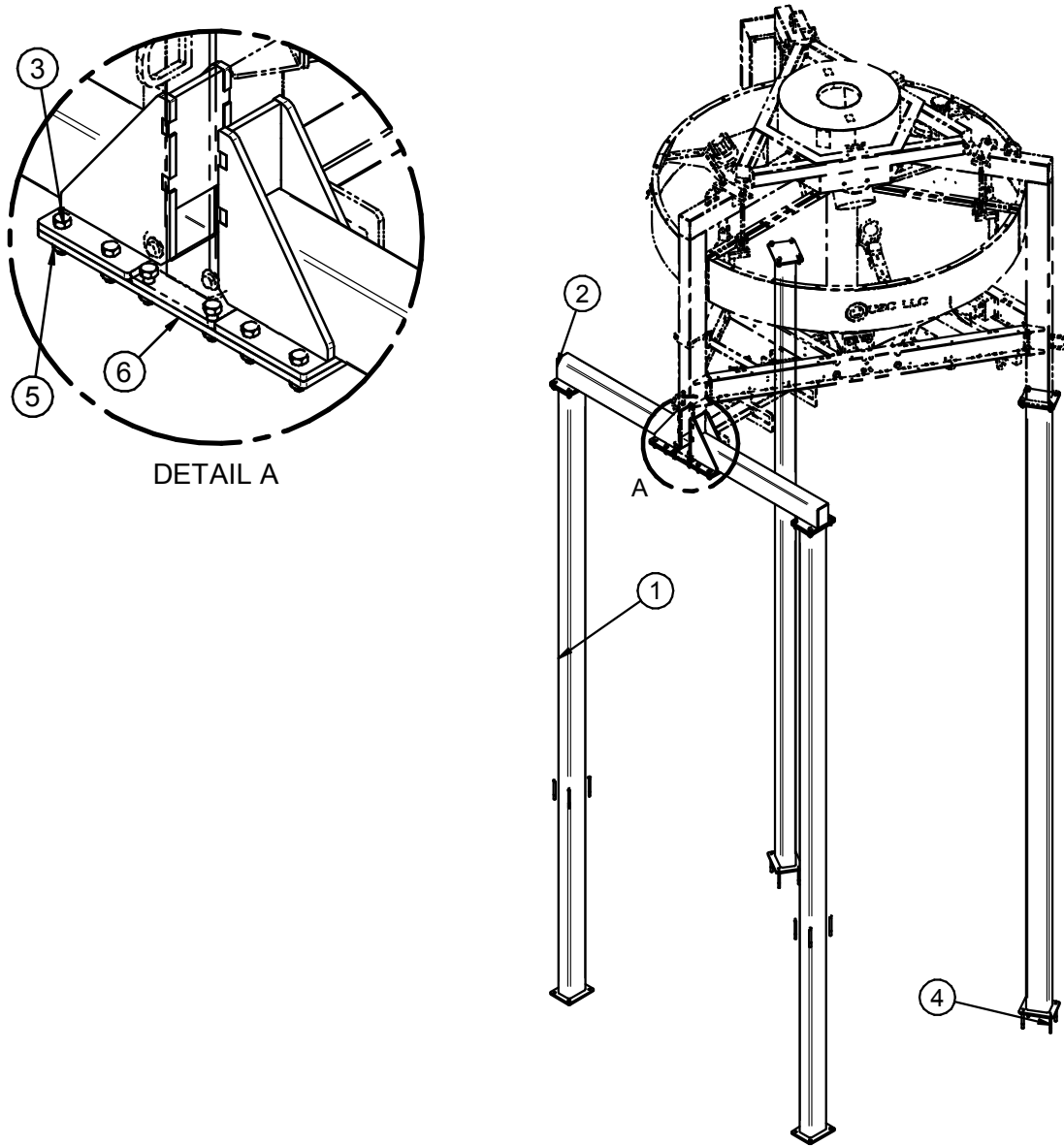
PART #		13-05-0939 REV A0		
Item #	Part #	Description	Qty	See Page
1	13-05-0875	KIT LEG BRACE3 TRI-FLO	1	85
2	13-05-0876	KIT LEG TRI-FLO HC LPV WB	1	59

KIT LEG BRACES (13-05-0875 REV A0)



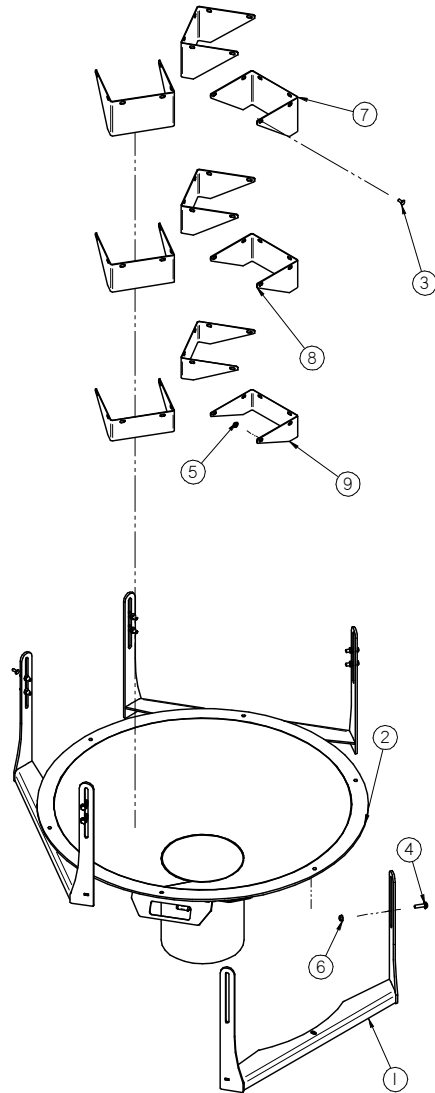
PART #		13-05-0875 REV A0	
Item #	Part #	Description	Qty
1	05-07-1072	WDMT BRACE MNT STRAIGHT	12
2	05-07-1073	WDMT BRACE MNT FORMED	12
3	05-10-4894	ANGLE LEG X BRACE	8
4	05-10-4895	ANGLE LEG X BRACE	4
5	06-01-0025	BOLT .500-13 X 1.50 ZP GR5	78
6	06-03-0004	NUT NYL LOCK .500-13 ZP GR5	78
7	08-07-0039	BAG SHPG 10X16 POLY LAM W/TIE	1

KIT LEG HC HV08 WITH WB (13-05-0876 REV A0)



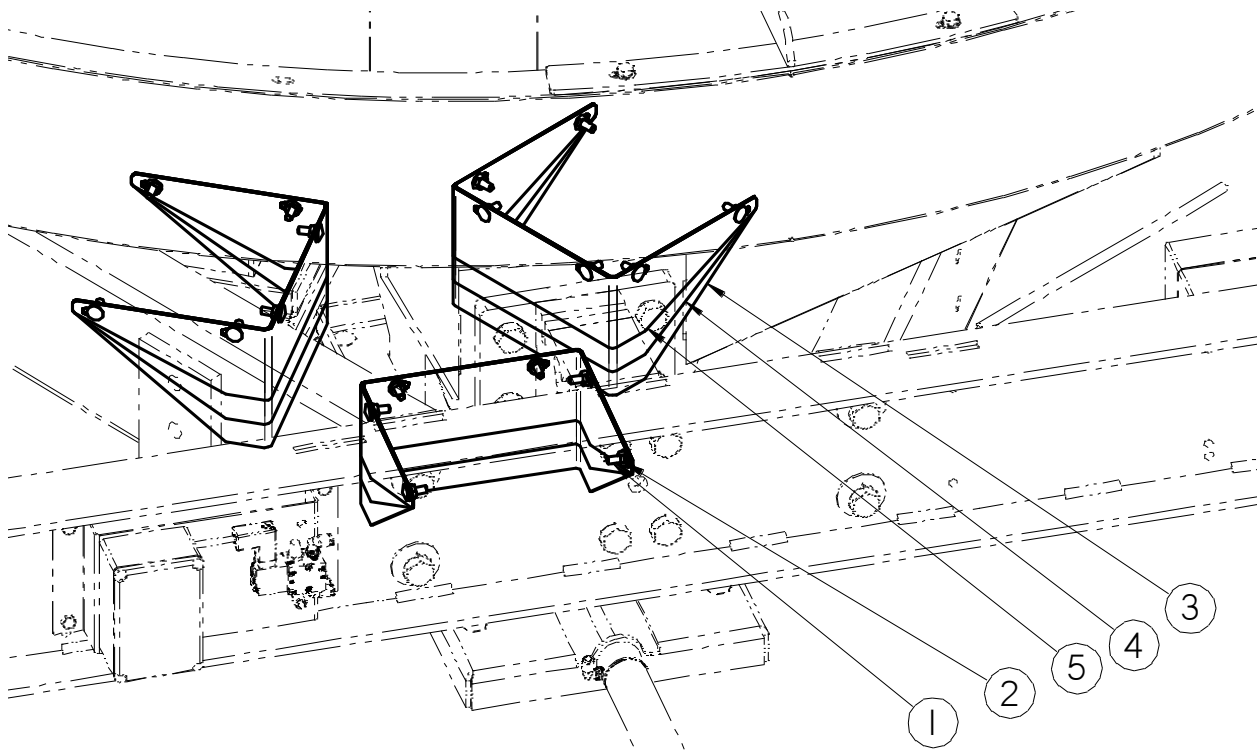
PART #		13-05-0876 REV A0	
Item #	Part #	Description	Qty
1	05-03-1957	WDMT LEG TRI-FLO HC	4
2	05-07-0977	WDMT OFFSET LEG	2
3	06-01-0032	BOLT .625-11 X 2.00 ZP GR5	28
4	06-01-0179	BOLT .500-13 CONC ANCHOR ZP 5.500	16
5	06-03-0005	NUT NYL LOCK .625-11 ZP	28
6	105C26	OFFSET LEG SPLICE PLT	1

KIT INSTALL FLOOR MOUNT SC (13-10-0027 REV A1)



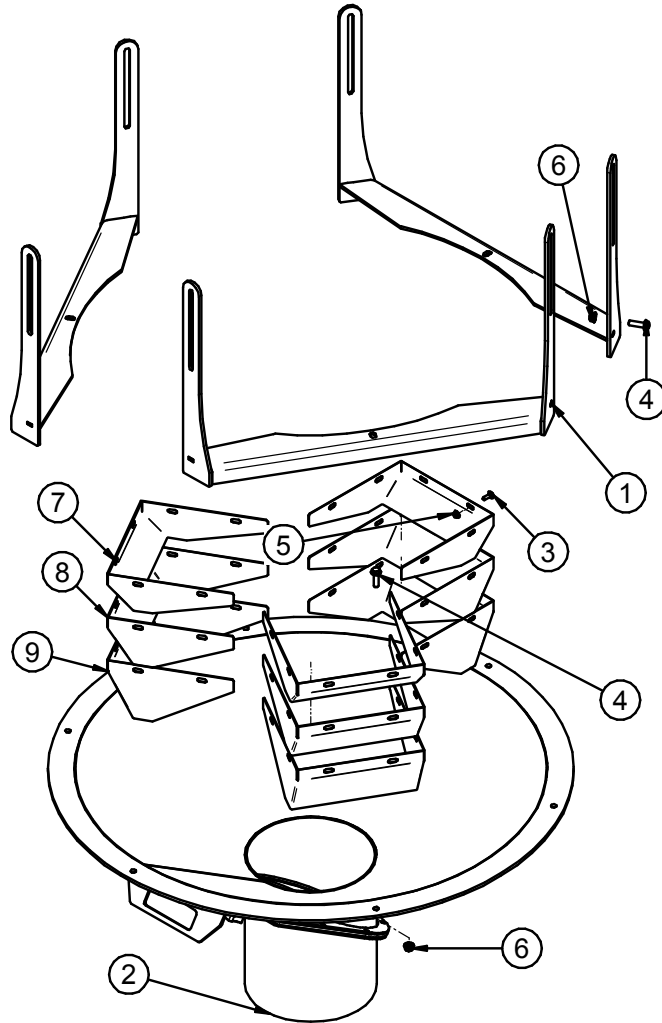
PART #		13-10-0027 REV A1	
Item #	Part #	Description	Qty
1	05-03-1909	WDMT TRI-FLO HOPP HANGER	3
2	05-07-0488	ASSY DSCHG CONE TRI-FLO 10 OD EXT	1
3	06-01-0122	BOLT CRG .250-20 X .750 ZP GR5	18
4	06-01-0189	BOLT FLG .375-16 X 1.250 ZP GR5	12
5	06-03-0013	NUT LOCK FLG .250-20 ZP GR5	18
6	06-03-0014	NUT LOCK FLG .375-16 ZP GR5	12
7	1022D3	DVTR TRI-FLO DSCHG GATE 5IN	3
8	1022D4	DVTR TRI-FLO DSCHG GATE 4IN	3
9	1022D5	DVTR TRI-FLO DSCHG GATE 3IN	3

KIT INSTALL EXTENSION ONLY SC (13-10-0026 REV A0)



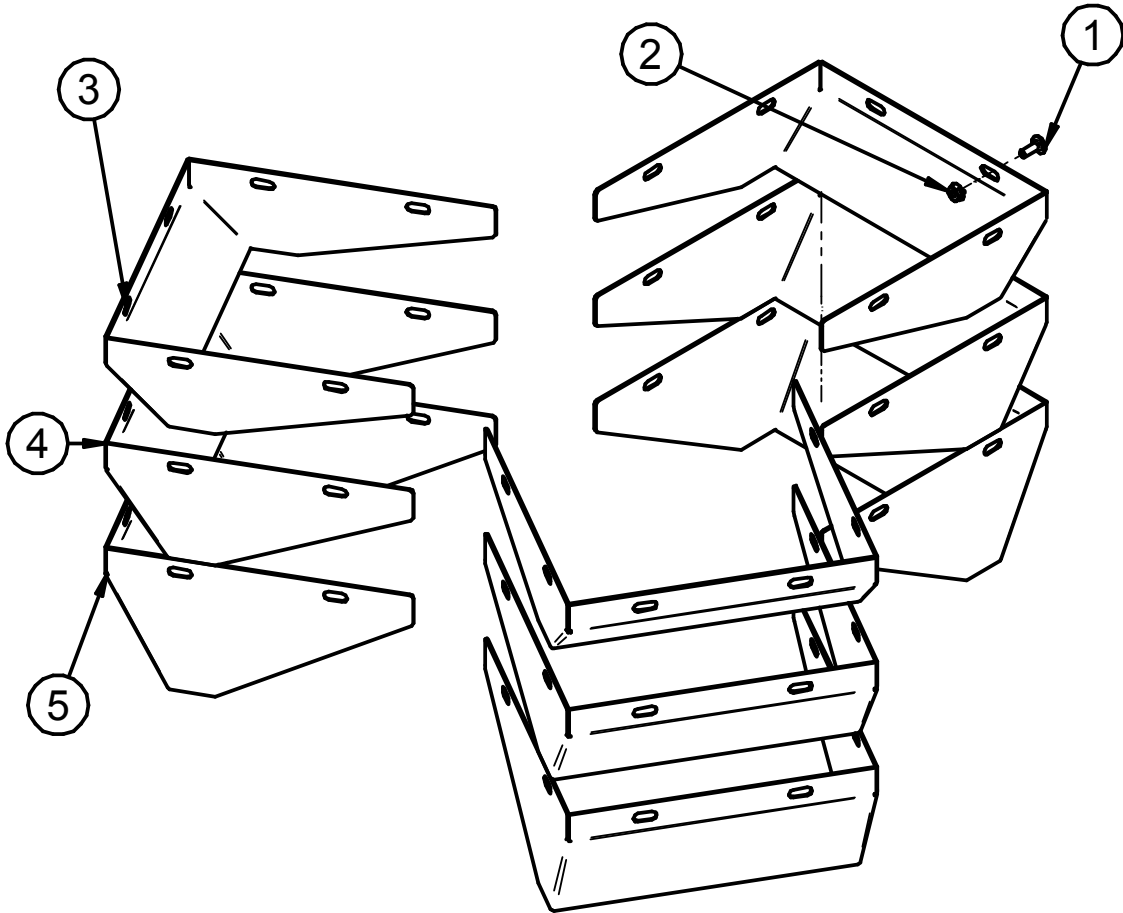
PART #		13-10-0026 REV A0	
Item #	Part #	Description	Qty
1	06-01-0122	BOLT CRG .250-20 X .750 ZP GR5	18
2	06-03-0013	NUT LOCK FLG .250-20 ZP GR5	18
3	1022D3	DVTR TRI-FLO DSCHG GATE 5IN	3
4	1022D4	DVTR TRI-FLO DSCHG GATE 4IN	3
5	1022D5	DVTR TRI-FLO DSCHG GATE 3IN	3

KIT INSTALL FLOOR MOUNT HC (13-10-0056 REV A2)



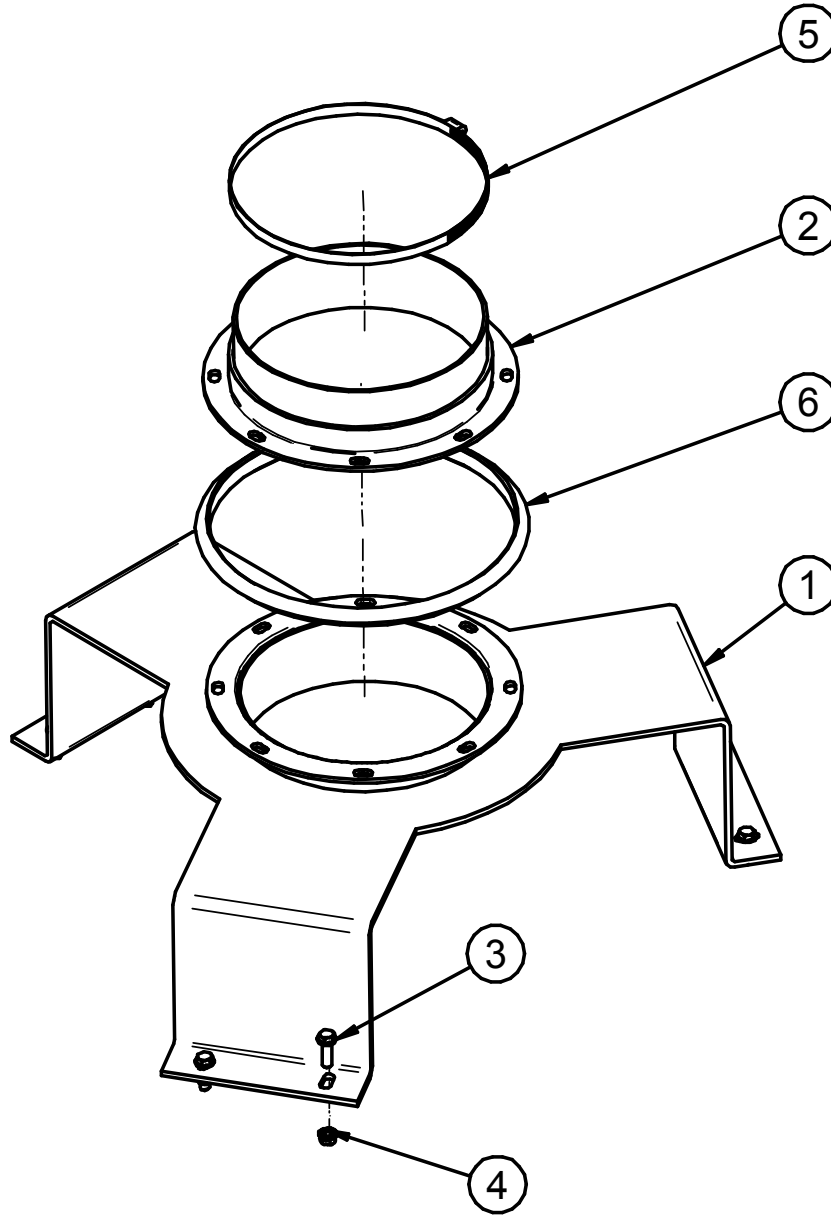
PART #		13-10-0056 REV A2	
Item #	Part #	Description	Qty
1	05-03-1909	WDMT TRI-FLO HOPP HANGER	3
2	05-07-0488	ASSY DSCHG CONE TRI-FLO 10 OD EXT	1
3	06-01-0122	BOLT CRG .250-20 X .750 ZP GR5	18
4	06-01-0189	BOLT FLG .375-16 X 1.250 ZP GR5	15
5	06-03-0013	NUT LOCK FLG .250-20 ZP GR5	18
6	06-03-0014	NUT LOCK FLG .375-16 ZP GR5	15
7	105C19	DVTR TRI-FLO DSCHG GATE 3IN HC	3
8	105C1A	DVTR TRI-FLO DSCHG GATE 4IN HC	3
9	105C1B	DVTR TRI-FLO DSCHG GATE 5IN HC	3

KIT INSTALL EXTENSION ONLY HC (13-10-0057 REV A1)



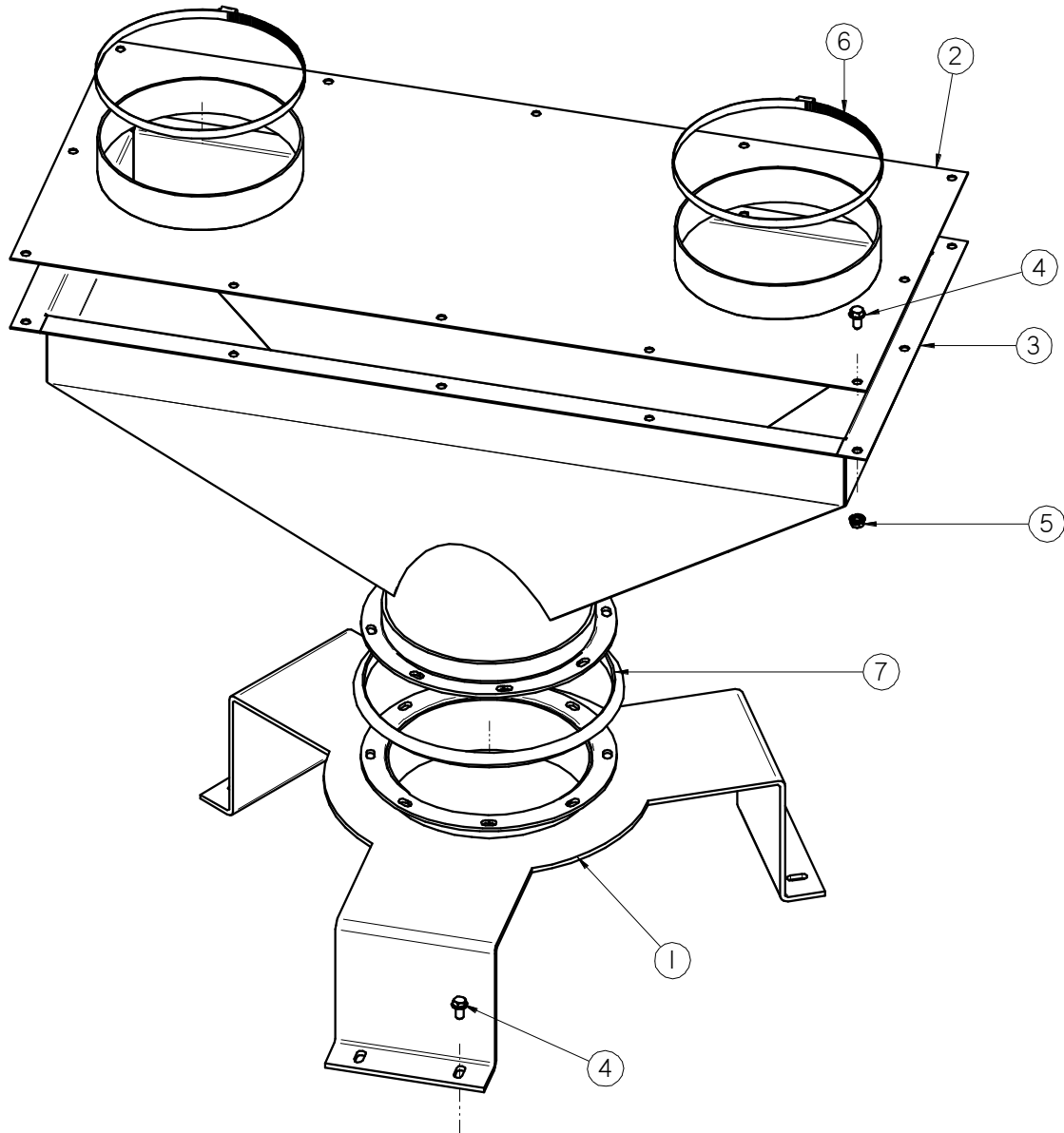
PART #		13-10-005 REV A1	
Item #	Part #	Description	Qty
1	06-01-0122	BOLT CRG .250-20 X .750 ZP GR5	18
2	06-03-0013	NUT LOCK FLG .250-20 ZP GR5	18
3	105C19	DVTR TRI-FLO DSCHG GATE 3IN HC	3
4	105C1A	DVTR TRI-FLO DSCHG GATE 4IN HC	3
5	105C1B	DVTR TRI-FLO DSCHG GATE 5IN HC	3

KIT INSTALL EXTENSION TOP SC 10IN DIAMETER (13-05-0779 REV A1)



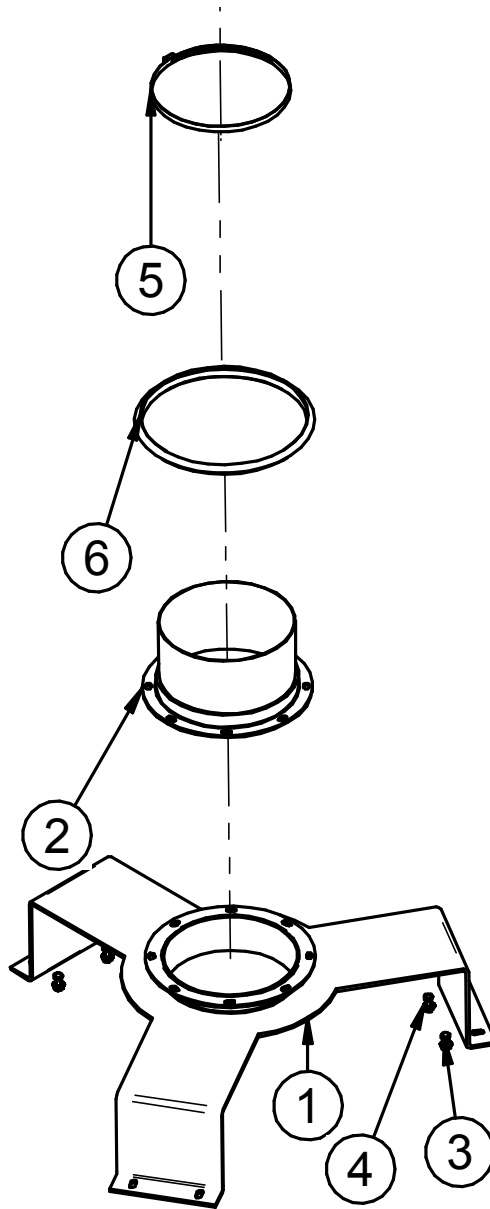
PART #		13-05-0779 REV A1	
Item #	Part #	Description	Qty
1	05-03-1858	STANDOFF WDMT 10 IN	1
2	05-03-1966	WDMT SPOUT 10 IN DIA	1
3	06-01-0189	BOLT FLG .375-16 X 1.250 ZP GR5	6
4	06-03-0014	NUT LOCK FLG .375-16 ZP GR5	6
5	06-07-0027	CLMP HOSE 9.375 TO 12.25 X 9/16 SS	1
6	06-07-0051	CLMP BAND 10.00IN	1

ASSEMBLY DUAL INLET SC 10IN DIAMETER (05-07-1038 REV A1)



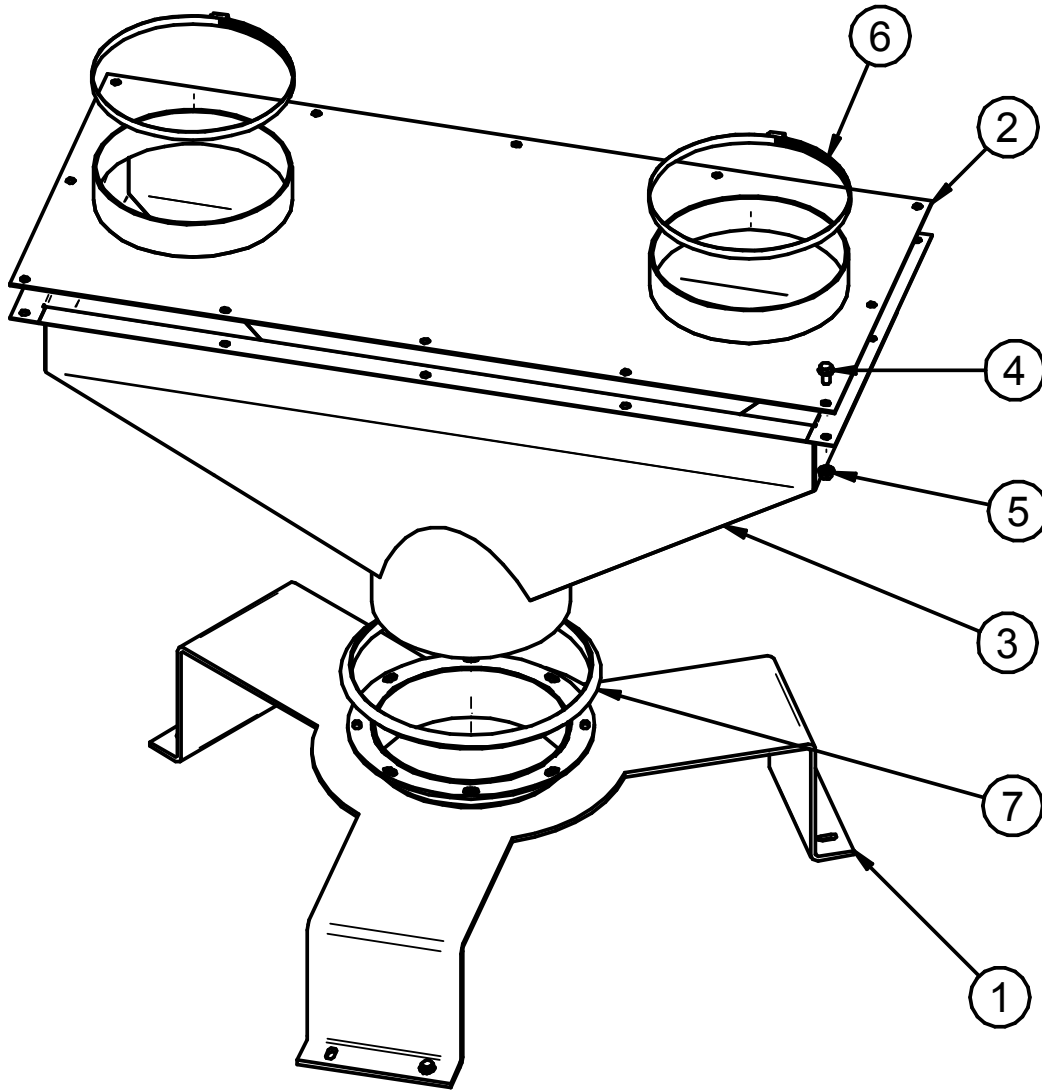
PART #		05-07-1038 REV A1	
Item #	Part #	Description	Qty
1	05-03-1858	STANDOFF WDMT 10 IN	1
2	05-03-1860	WDMT TRI-FLO DUAL INLET CVR	1
3	05-03-1861	WDMT TRI-FLO DUAL INLET	1
4	06-01-0124	BOLT FLG .375-16 X .750 ZP GR5	18
5	06-03-0014	NUT LOCK FLG .375-16 ZP GR5	12
6	06-07-0027	CLMP HOSE 9.375 TO 12.25 X 9/16 SS	2
7	06-07-0051	CLMP BAND 10.00IN	1

KIT EXTENSION TOP HC 10IN DIAMETER (13-05-0804 REV A1)



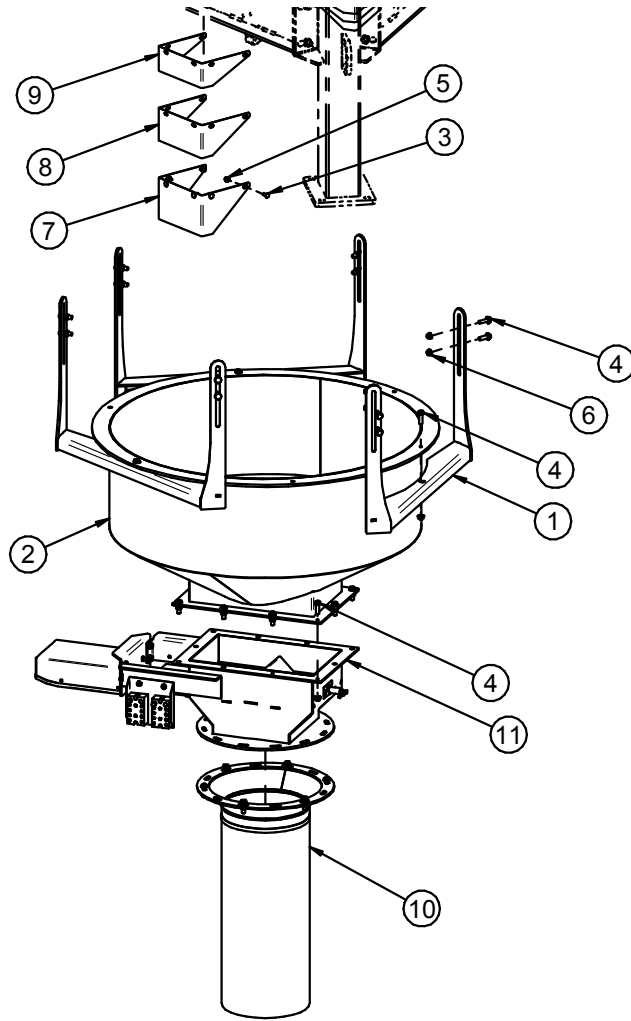
PART #		13-05-0804 REV A1	
Item #	Part #	Description	Qty
1	05-03-1858	WDMT TRI-FLO INLET SUPPORT	1
2	05-03-1859	SPOUT 10 IN DIA	1
3	06-01-0016	BOLT .375-16 X 1.00 ZP GR5	6
4	06-03-0014	NUT LOCK FLG .375-16 ZP GR5	6
5	06-07-0027	CLMP HOSE 9.375 TO 12.25 X 9/16 SS	1
6	06-07-0051	CLMP BAND 10.00IN	1

ASSEMBLY DUAL INLET HC 10IN DIAMETER (05-07-0976 REV A1)



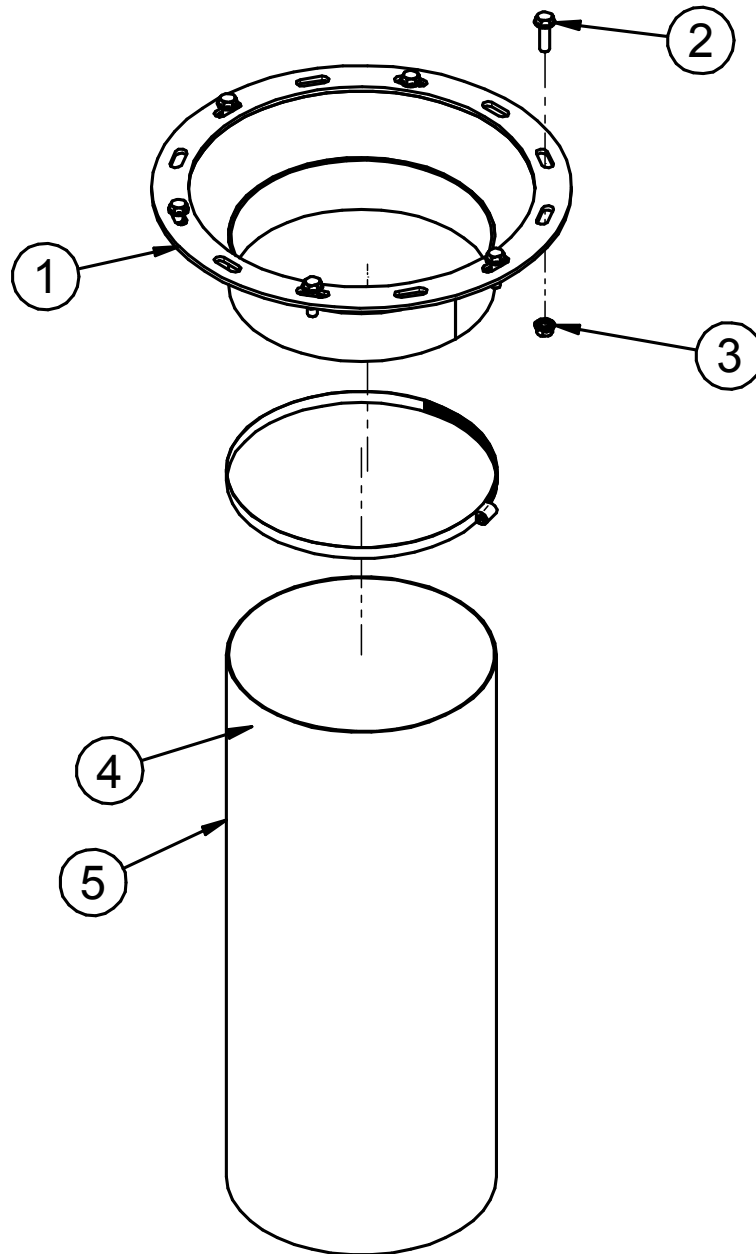
PART #		05-07-0976 REV A1	
Item #	Part #	Description	Qty
1	05-03-1790	STANDOFF WDMT HI-CAPACITY	1
2	05-03-1860	WDMT TRI-FLO DUAL INLET CVR	1
3	05-03-1861	WDMT TRI-FLO DUAL INLET	1
4	06-01-0124	BOLT FLG .375-16 X .750 ZP GR5	18
5	06-03-0014	NUT LOCK FLG .375-16 ZP GR5	12
6	06-07-0027	CLMP HOSE 9.375 TO 12.25 X 9/16 SS	2
7	06-07-0051	CLMP BAND 10.00IN	1

ASSEMBLY LIW HOPPER SC ONLY (13-05-0822 REV A1)



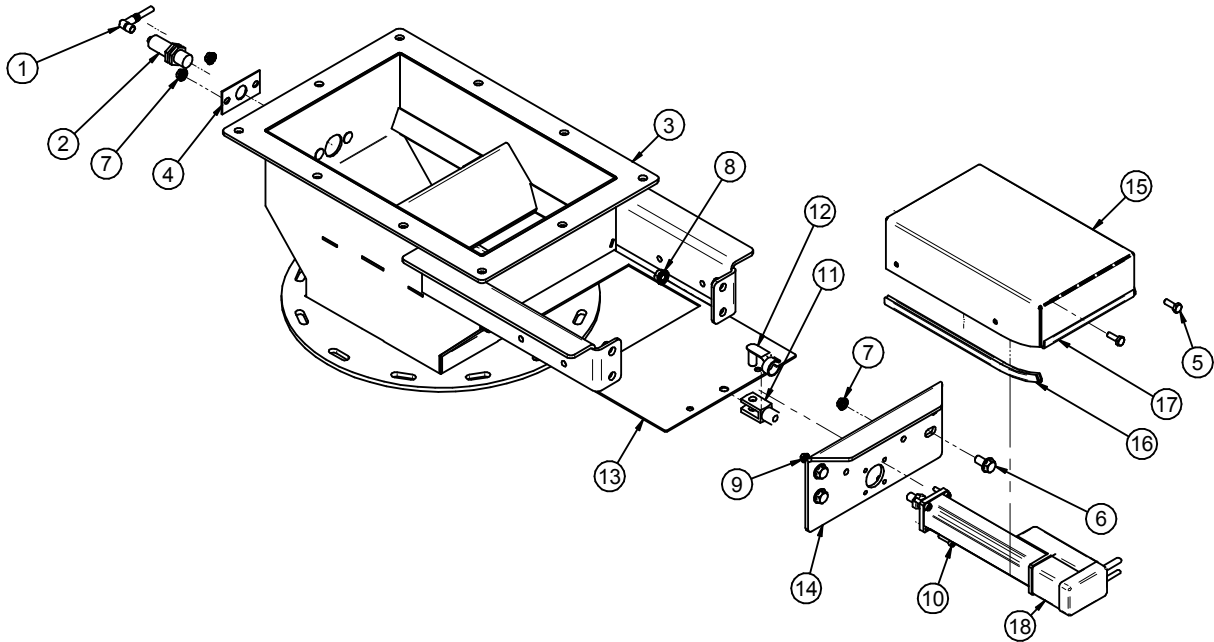
PART #		13-05-0822 REV A1		
Item #	Part #	Description	Qty	See Page
1	05-03-1909	WDMT TRI-FLO HOPP HANGER	3	
2	05-03-1910	WDMT HOPPER TRI-FLO LIW	1	
3	06-01-0122	BOLT CRG .250-20 X .750 ZP GR5	18	
4	06-01-0189	BOLT FLG .375-16 X 1.250 ZP GR5	25	
5	06-03-0013	NUT LOCK FLG .250-20 ZP GR5	18	
6	06-03-0014	NUT LOCK FLG .375-16 ZP GR5	25	
7	1022D3	DVTR TRI-FLO DSCHG GATE 5IN	3	
8	1022D4	DVTR TRI-FLO DSCHG GATE 4IN	3	
9	1022D5	DVTR TRI-FLO DSCHG GATE 3IN	3	
10	12-04-0072	ASSY ADPT LIW GATE TO CNVR	1	72
11	12-04-0080	ASSY LIW GATE V4 TRTR & WH	1	74

ASSEMBLY ADAPTER LIW GATE TO CONVEYOR SC ONLY (12-04-0072 REV A0)



PART #		12-04-0072 REV A0	
Item #	Part #	Description	Qty
1	05-03-1867	WDMT AT500 LIW GATE ADPT 10IN OUT	1
2	06-01-0189	BOLT FLG .375-16 X 1.250 ZP GR5	6
3	06-03-0014	NUT LOCK FLG .375-16 ZP GR5	6
4	06-07-0027	CLMP HOSE 9.375 TO 12.25 X 9/16 SS	1
5	103D92	CNVR DSCHG SPOUT EXT 10ID	1

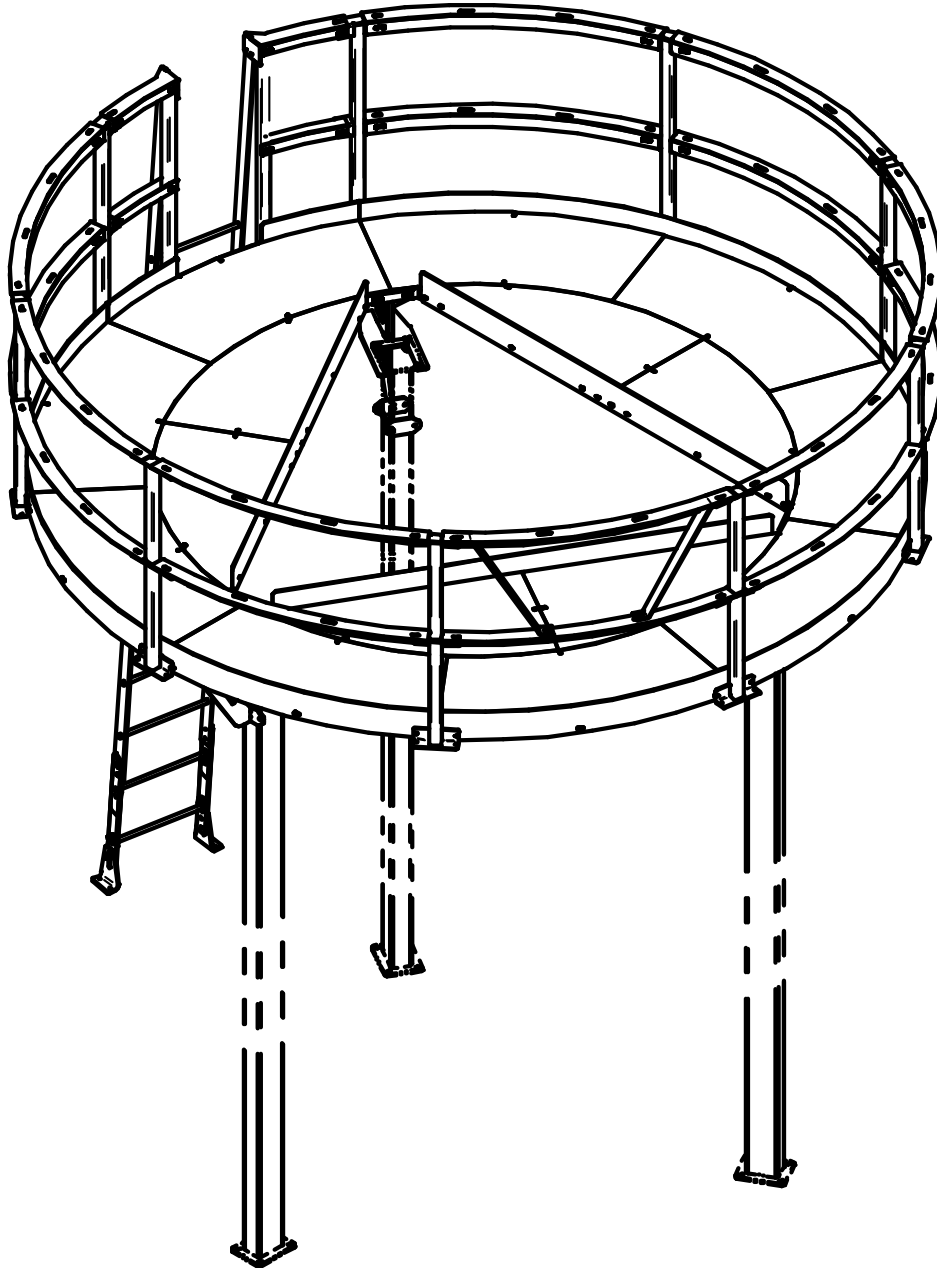
ASSEMBLY LIW GATE V4 TRTR & WH SC ONLY (12-04-0080 REV B0)



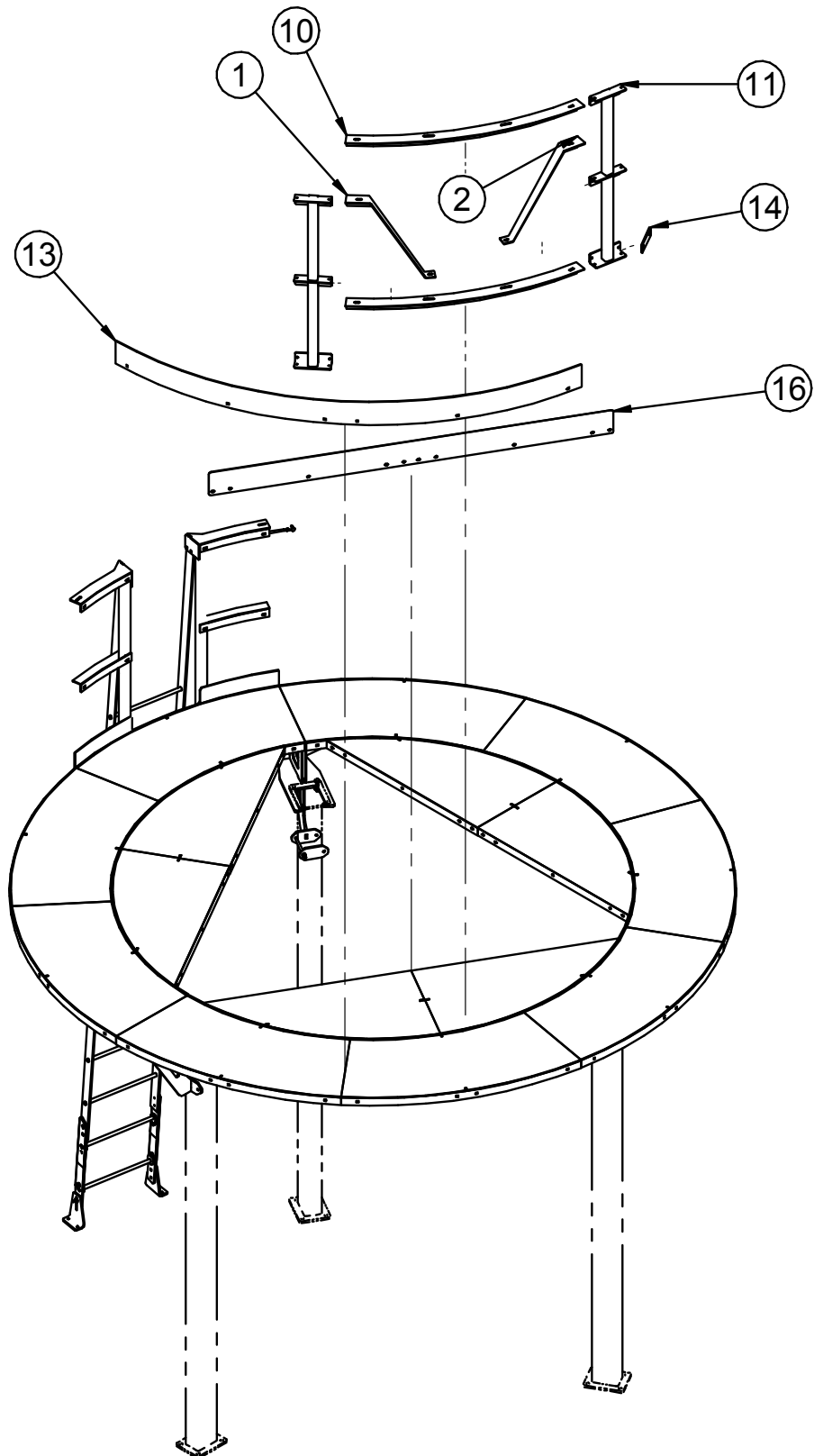
PART #		12-04-0080 REV B0	
Item #	Part #	Description	Qty
1	03-08-0423	CONN TRCK WK 4T-1-PSG 3M/S90	1
2	03-10-0173	SENS PROX 24VDC IFM KG6000	1
3	05-03-1764	WDMT AT500 LIW GATE RECT	1
4	05-03-3316	PLT SMW PROX SW MNT	1
5	06-01-0006	BOLT .250-20 X .750 ZP GR5	2
6	06-01-0124	BOLT FLG .375-16 X .750 ZP GR5	4
7	06-03-0013	NUT LOCK FLG .250-20 ZP GR5	4
8	06-03-0014	NUT LOCK FLG .375-16 ZP GR5	4
9	06-03-0031	NUT LOCK FLG M5-0.8 GR8.8	4
10	06-06-0083	SCRW SH M5-0.8 X 20MM BO	4
11	06-12-0043	CLVS 10-1.25 X 10MM	1
12	06-12-0044	PIN CLIP SPRING 10MM	1
13	105F4B	LIW GATE SLIDE	1
14	105F52	ACTR MNT PLT	1
15	106BE2	CVR ACTR LIW ADJ CHMBR LPV B2B	1
16	106BE3	EDGING ACTR COVER	2
17	106BE4	EDGING ACTR COVER	1
18	13-04-0288	ASSY V4 LIW DYADIC ACTUATOR CNTRLS	1

TRI-FLO® WITH SERVO

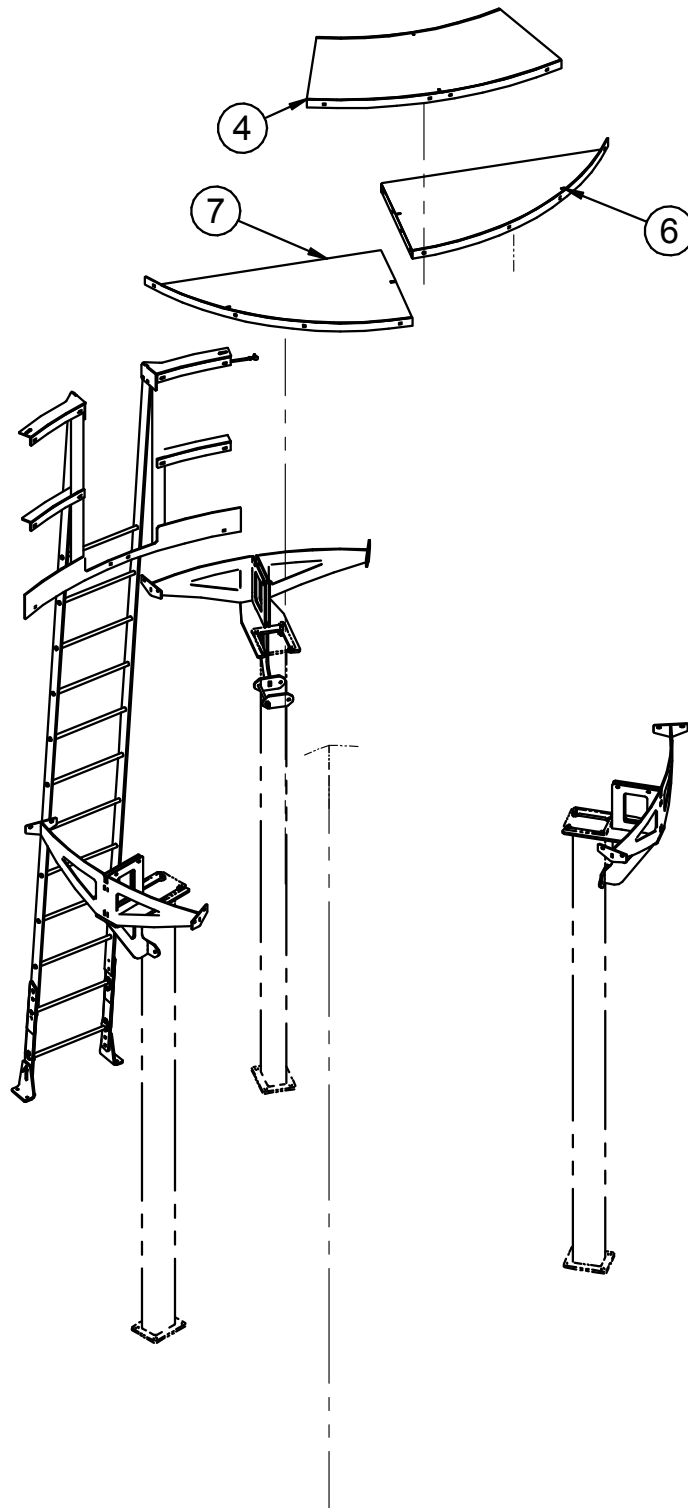
KIT CATWALK ASSEMBLY (13-05-0320 REV B1)



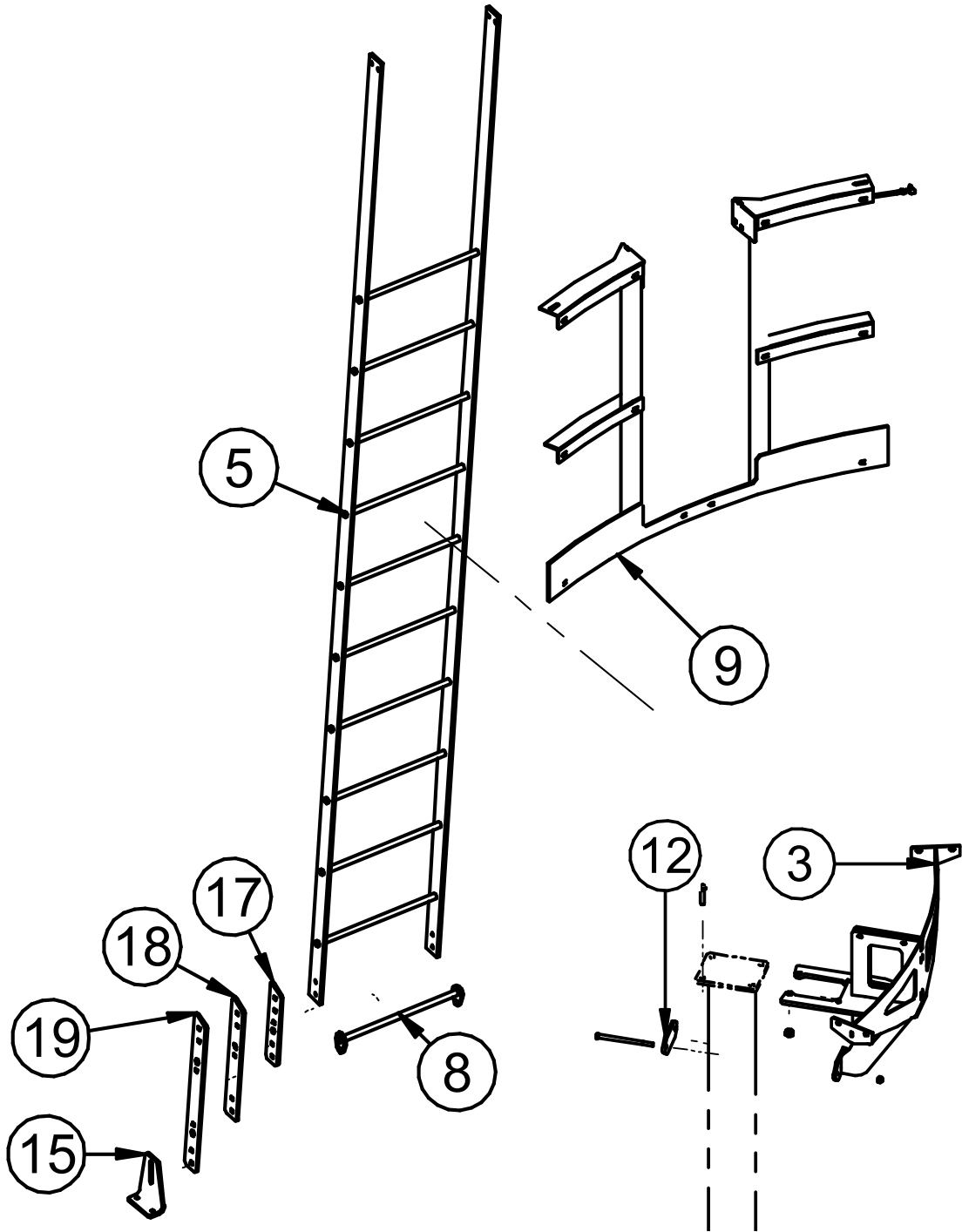
KIT CATWALK ASSEMBLY (13-05-0320 REV B1)



KIT CATWALK ASSEMBLY (13-05-0320 REV B1)



KIT CATWALK ASSEMBLY (13-05-0320 REV B1)



KIT CATWALK ASSEMBLY (13-05-0320 REV B1)

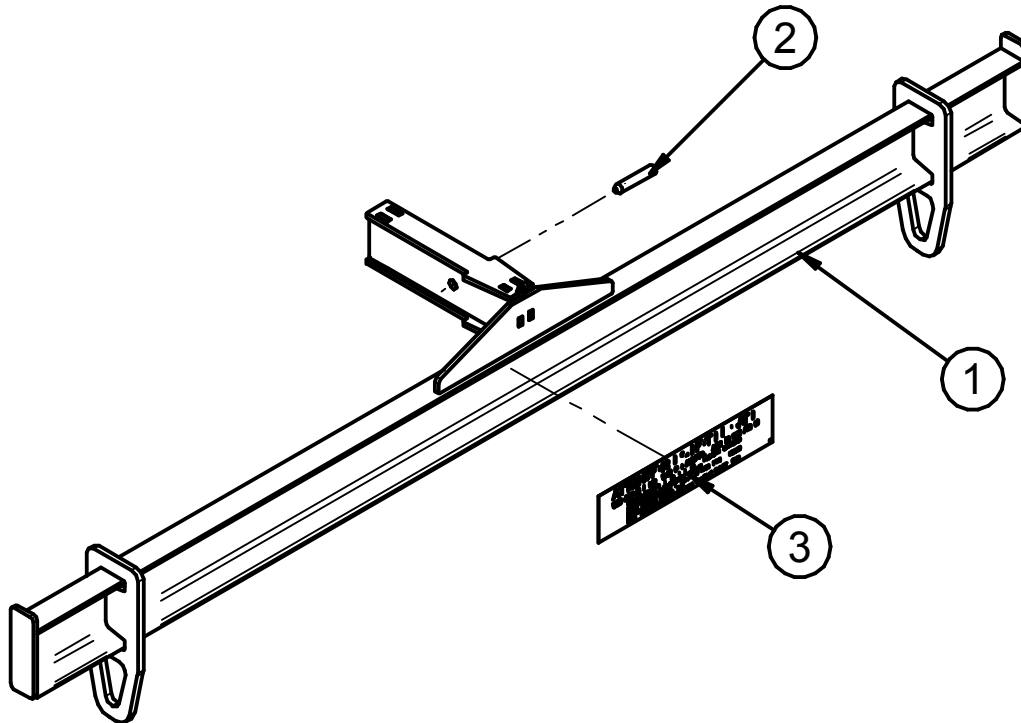
PART #		13-05-0320 REV B1		
Item #	Part #	Description	Qty	See Page
1	05-03-1418	WDMT CW BRACE RH	1	
2	05-03-1419	WDMT CW BRACE LH	1	
3	05-03-1420	WDMT CW MOUNT	3	
4	05-03-1421	WDMT CW FLOOR	9	
5	05-03-1427	WDMT CW LADDER	1	
6	05-03-1434	WDMT CW FLOOR TRI-1	3	
7	05-03-1435	WDMT CW FLOOR TRI-2	3	
8	05-03-1437	WDMT CW LAD RUNG	2	
9	05-03-1693	WDMT CW LDR SECT	1	
10	05-03-1694	WDMT CW RAIL TOP MID	16	
11	05-03-1695	WDMT CW RAIL POST	9	
12	102D5F	PLT CLAMP BASE	2	
13	10320A	PLT CW RAIL KICK	4	
14	10321E	PLT CW TIE INNER	3	
15	10321F	PLT LADDER MT	2	
16	103344	PLT CW TOE BOARD	3	
17	103345	PLT CW LAD EXT SMW 12IN	2	
18	103346	PLT CW LAD EXT SMW DVTR	2	
19	103347	PLT CW LAD EXT SMW DVTR 12IN	2	
20	13-05-0321	KIT TRI-FLO CW HDWR	1	76

KIT CATWALK HARDWARE(13-05-0321 REV B1)

PART #		13-05-0321 REV A1	
Item #	Part #	Description	Qty
1	06-01-0075	BOLT .625-11 X 2.50 ZP GR5	12
2	06-01-0127	BOLT CRG .375-16 X 1.25 ZP GR5	208
3	06-01-0200	BOLT .625-11 X 3.00 ZP GR5	4
4	06-01-0220	BOLT 3/8-16 CONC ANCHOR ZP 3.75	4
5	06-01-0268	BOLT .500-13 X 8.00 ZP GR5	6
6	06-01-0300	BOLT CRG .375-16 X 1.75 ZP GR5	14
7	06-03-0003	NUT NYL LOCK .375-16 ZP GR5	226
8	06-03-0004	NUT NYL LOCK .500-13 ZP GR5	6
9	06-03-0005	NUT NYL LOCK .625-11 ZP	12
10	06-05-0004	WSHR FLAT .375 ZP	4
11	08-07-0037	BCKT 4 GAL SQ	1
12	08-07-0038	LID BCKT 4 GAL SQ	1
13	102D5F	PLT CLAMP BASE	3
14	10321E	PLT CW TIE INNER	3
15	PL-13-05-0321	PARTS LIST FOR CW ASSY HRDW BUCKET	1

TRI-FLO® WITH SERVO

KIT WEIGHT BAR ADD-ON(13-05-0853 REV A0)



PART #		13-05-0321 REV A1	
Item #	Part #	Description	Qty
1	05-09-0061	WDMT WGH BAR TRI-FLOW ADD ON	1
2	06-09-0070	PIN SPGLD QCK REL RING GRIP 0.5DIA	1
3	09-02-0017	LBL ATWRK ATT SCALE BAR TRI-FL	1

TRI-FLO® WITH SERVO

NOTES:

INDEX BY PART NUMBER

PART #	REVISION	DESCRIPTION	PAGE #
		GENERIC STANDARD CAPACITY TRI-FLO	18
		GENERIC HIGH CAPACITY TRI-FLO	37
		3 LEG KIT	53
		3 LEG KIT WITH DIVERTER	54
		4 LEG KIT	56
05-07-0757	A5	ASSY SERVO DRV TRI FLO	24
05-07-0760	B0	ASSY HOPP 2-3 TRI FLO	30
05-07-0889	A1	ASSY HOPP TRI FLO	47
05-07-0891	A2	ASSY DIST TRI FLO V4 HC	44
05-07-0917	A1	ASSY SERVO DRV TRI FLO	41
05-07-0969	A1	ASSY SMC VLV & REGL TRI FLO V4	51
05-07-0974	A0	ASSY HIGH LVL INDI TRI FLO V4	50
05-07-0976	A1	ASSY TRI-FLO DUAL INLET HI CAPACITY	67
05-07-0984	B0	ASSY DIST TRI FLO V4	27
05-07-1009	B1	TRI-FLO V4 STANDARD CAP	19
05-07-1010	B0	TRI-FLO V4 HIGH CAP	35
05-07-1038	A1	ASSY TRI-FLO DUAL INLET 10 IN	65
12-04-0042	A4	SLIDE GATE 8.00 SQ TRI-FLO	48
12-04-0045	A1	SLIDE GATE 6.00 SQ TRI-FLO V4	31
12-04-0072	A0	ASSY ADPT LIW GATE TO CNVR	69
12-04-0080	B0	ASSY LIW GATE V4 TRTR & WH	70
13-05-0263	A0	KIT WEIGHT BAR TRI-FLOW	33
13-05-0268	A1	KIT FORK PCKT ASSY TRI-FLOW	52
13-05-0320	B1	KIT TRI-FLO CATWALK ASSY	71
13-05-0321	A0	KIT TRI-FLO CW HDWR	75
13-05-0455	A0	ASSY TRI FLO LEG OFFSET	55
13-05-0598	A0	KIT WEIGHT BAR TRI-FLOW	49
13-05-0779	A1	KIT TRI-FLO EXTENSION TOP 10 IN DIA	64
13-05-0804	A1	KIT TRI-FLO EXTENSION TOP 10 IN HC	66
13-05-0822	A1	ASSY TRI-FLO LIW HOPPER	68
13-05-0853	A0	KIT WEIGHT BAR TRI-FLOW ADD-ON	76
13-05-0875	A0	KIT LEG BRACE3 TRI-FLO	58
13-05-0876	A0	KIT LEG TRI-FLO HC LPV WB	59
13-05-0939	A0	KIT LEG TRI-FLO 196IN DSCHG HT 4LEG	57
13-10-0026	A0	KIT INSTALL TRI FLO EXT ONLY	61
13-10-0027	A1	KIT INSTALL TRI FLO FLOOR MNT	60
13-10-0056	A2	KIT INSTL TRI FLO FLR MNT HIGH CAP	62
13-10-0057	A1	KIT INSTL TRI FLO EXT ONLY HIGH CAP	63

USC LIMITED WARRANTY

SECTION J

USC, LLC, (Manufacturer) warrants its seed treating equipment as follows:

1. **Limited Warranty:** Manufacturer warrants that the Products sold hereunder will be free from defects in material and workmanship for a period of 18 months from date of shipment. If the Products do not conform to this Limited Warranty during the warranty period, Buyer shall notify Manufacturer in writing of the claimed defects and demonstrate to Manufacturer satisfaction that said defects are covered by this Limited Warranty. If the defects are properly reported to Manufacturer within the warranty period, and the defects are of such type and nature as to be covered by this warranty, Manufacturer shall, at its expense, furnish replacement Products or, at Manufacturer's option, replacement parts for the defective products. Shipping and installation of the replacement Products or replacement parts shall be at the Buyer's expense.

2. **Other Limits:** THE FOREGOING IS IN LIEU OF ALL OTHER WARRANTIES, EXPRESSED OR IMPLIED, INCLUDING BUT NOT LIMITED TO THE IMPLIED WARRANTIES OF MERCHANTABILITY AND FITNESS FOR A PARTICULAR PURPOSE. Manufacturer does not warrant against damages or defects arising from improper installation (where installation is by persons other than Manufacturer), against defects in products or components not manufactured by Manufacturer, or against damages resulting from such non-Manufacturer made products or components. Manufacturer passes on to the Buyer the warranty it received (if any) from the maker of such non-Manufacturer made products or components. This warranty also does not apply to Products upon which repairs and / or modifications have been effected or attempted by persons other than pursuant to written authorization by Manufacturer. This includes any welding on equipment which could damage electrical components. Manufacturer does not warrant against casualties or damages resulting from misuse and / or abuse of Products, improper storage or handling, acts of nature, effects of weather, including effects of weather due to outside storage, accidents, or damages incurred during transportation by common carrier.

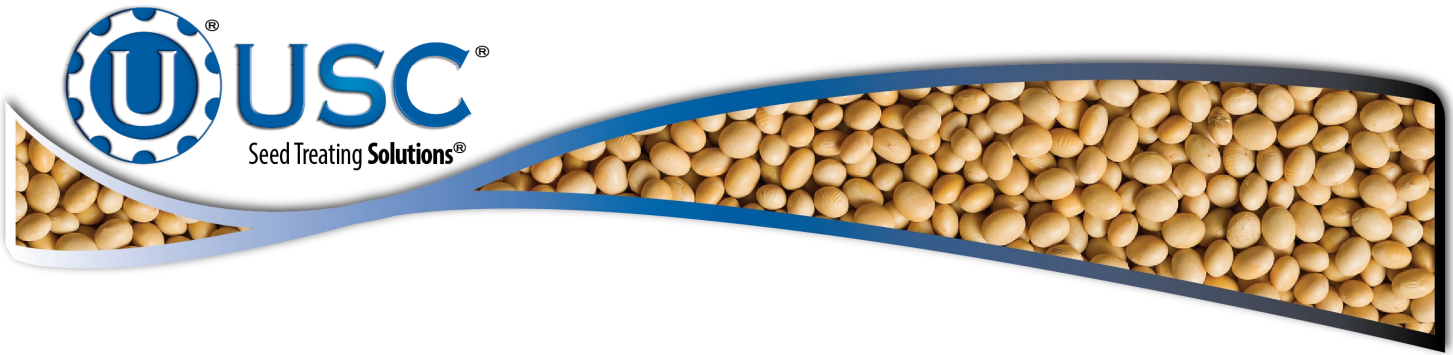
3. **Exclusive Obligation:** THIS WARRANTY IS EXCLUSIVE. The sole and exclusive obligation of Manufacturer shall be to repair or replace the defective Products in the manner and for the period provided above. Manufacturer shall not have any other obligation with respect to the Products or any part thereof, whether based on contract, tort, strict liability or otherwise. Under no circumstances, whether based on this Limited Warranty or otherwise, shall Manufacturer be liable for lost profits, lost revenue, lost sales (whether direct or indirect damages), incidental, special, punitive, indirect or consequential damages.

4. **Other Statements:** Manufacturer's employees or representatives' oral or other written statements do not constitute warranties, shall not be relied upon by Buyer, and are not a part of the contract for sale or this limited warranty.

5. **Return Policy:** Approval is required prior to returning goods to Manufacturer. A restocking fee will apply.

6. **Entire Obligation:** This Limited Warranty states the entire obligation of Manufacturer with respect to the Products. If any part of this Limited Warranty is determined to be void or illegal, the remainder shall remain in full force and effect.

US / Canada Non-Exclusive 2016



DOCUMENT REVIEW RECORD	
DATE	BY
03-20	BT

USC, LLC

2320 124th road

Sabetha, KS 66534

PHONE: (785) 431-7900

FAX: (785) 431-7950

EMAIL: sales-team@uscllc.com

WEB: www.uscllc.com
