

SEED SERIES 16 CONVEYORS

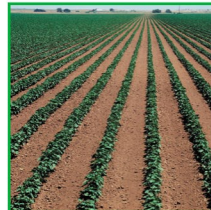
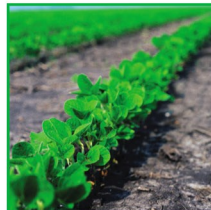
EQUIPMENT REVISION: 03B



PARTS MANUAL

Document: MD-09-06-5001

Revision: A Effective Date: 11-2019



INTRODUCTION

Thank you for choosing USC, LLC for your equipment needs. We appreciate your business and will work diligently to ensure that you are satisfied with your choice.

OVERVIEW

The purpose of this manual is to provide you with the parts drawings needed maintain the Seed Series Conveyor. It does not hold USC, LLC liable for any accidents or injuries that may occur.

The technical information provided in this document is based on extensive testing under controlled conditions at the USC research and development facility.

This information is given without guarantee as the conditions of operation and storage of the equipment are beyond our control. Variables such as temperature, humidity, viscosity of chemical products and changes in seed size or variety may all effect the accuracy of application and seed coverage. Periodically check the equipment calibration while treating and make adjustments as required. This will insure the optimum seed coverage.

Replacement parts may be ordered through from your authorized dealer

**PLEASE HAVE YOUR EQUIPMENT SERIAL NUMBER IN HAND
WHEN CALLING TO ORDER PARTS.**

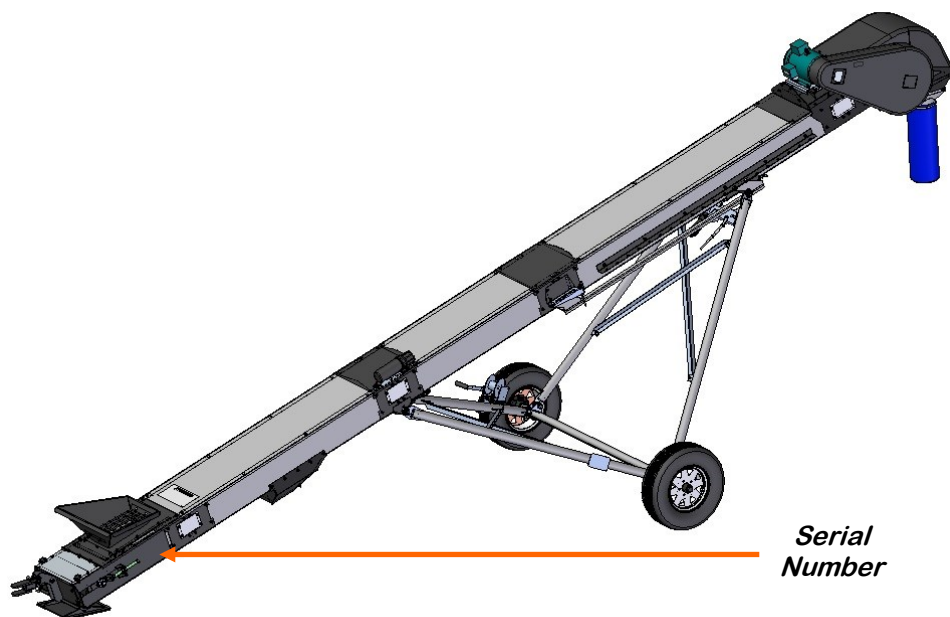


TABLE OF CONTENTS

<u>Section</u>	<u>Contents</u>	<u>Page #</u>
Section A	Safety Instructions	4
Section B	Mechanical Drawings	15
	Index by Part Number	60
Section C	Limited Warranty	62

SAFETY INSTRUCTIONS

SECTION A

Every year accidents in the work place maim, kill and injure people. Although it may be impossible to prevent all accidents, with the right combination of training, operating practices, safety devices, and operator vigilance, the number of accidents can be significantly reduced. The purpose of this section is to educate equipment users about hazards, unsafe practices, and recommended hazard avoidance techniques.

SAFETY WORDS AND SYMBOLS

It is very important that operators and maintenance personnel understand the words and symbols that are used to communicate safety information. Safety words, their meaning and format, have been standardized for U.S. manufacturers and published by the American National Standards Institute (ANSI). The European Community (E.C.) has adopted a different format based on the International Standards Organization (I.S.O.) and applicable machinery directives. Both formats are presented below. Graphic symbols are not standardized, but most manufacturers will use some variation of the ones seen in this manual.



Indicates an imminently hazardous situation which, if not avoided, **will** result in death or serious injury.



Indicates a potentially hazardous situation which, if not avoided, **could** result in death or serious injury.



Indicates a potentially hazardous situation which, if not avoided, **may** result in minor or moderate injury and/or property damage.



Provides additional information that the operator needs to be aware of to avoid a potentially hazardous situation.



Notice is used to notify people of important installation, operation or maintenance information which is not hazard related.



Mandatory Lockout Power Symbol. Disconnect, lockout and tagout electrical and other energy sources before inspecting, cleaning or performing maintenance on this panel.



International Safety Alert Symbol. The exclamation point (!) surrounded by a yellow triangle indicates that an injury hazard exists. However, it does not indicate the seriousness of potential injury. The exclamation point (!) is also used with the DANGER, WARNING and CAUTION symbols so the potential injury is indicated.



Electrocution Hazard Symbol. This symbol indicates that an electrocution hazard exists. Serious injury or death could result from contacting high voltage.



International Electrocution Hazard. This symbol indicates that an electrocution hazard exists. Serious injury or death could result from contacting high voltage.

LOCKOUT / TAGOUT PROCEDURES

Lockout/Tagout is the placement of a lock/tag on an energy isolating device in accordance with an established procedure. When taking equipment out of service to perform maintenance or repair work, always follow the lockout / tagout procedures as outlined in ANSI Z344.1 and/or OSHA Standard 1910.147. This standard “requires employers to establish a program and utilize procedures for affixing appropriate lockout devices or tagout devices to energy isolating devices and to otherwise disable machines or equipment to prevent unexpected energizing, start-up, or release of stored energy in order to prevent injury to employees.”

HAZARD REVIEW

Electrocution Hazard



Electrocution accidents are most likely to occur during maintenance of the electrical system or when working on or near exposed high voltage wiring. This hazard does not exist when the electrical power has been disconnected, properly locked, and tagged out.

Automatic Start Hazard

This equipment may be controlled by an automated system and may start without warning. Failure to properly disconnect, lockout, and tagout all energy sources of remotely controlled equipment creates a very hazardous situation and could cause injury or even death. PLEASE STAY CLEAR AND BE ALERT.



▲ WARNING

YOU are responsible for the **SAFE** operation and maintenance of your equipment . **YOU** must ensure that you and anyone else who is going to operate, maintain, or work around the conveyor be familiar with the operating and maintenance procedures and related **SAFETY** information contained in this manual. This manual will take you step-by-step through your working day and alert you to good safety practices that should be adhered to while operating the conveyor.

Remember, **YOU** are the key to safety. Good safety practices not only protect you, but also the people around you. Make these practices a working part of your safety program. Be certain that **EVERYONE** operating this equipment is familiar with the recommended operating and maintenance procedures and follows all the safety precautions. Most accidents can be prevented. Do not risk injury or death by ignoring good safety practices.

- Equipment owners must give operating instructions to operators or employees before allowing them to operate the machine, and at least annually thereafter per OSHA (Occupational Safety and Health Administration) regulation 1928.57.
- The most important safety device on this equipment is a **SAFE** operator. It is the operator's responsibility to read and understand **ALL** Safety and Operating instructions in the manual and to follow them. All accidents can be avoided.
- A person who has not read and understood all operating and safety instructions is not qualified to operate the machine. An untrained operator exposes himself and bystanders to possible serious injury or death.
- Do not modify the equipment in any way. Unauthorized modification may impair the function and/or safety and could affect the life of the equipment.
- Think SAFETY! Work SAFELY!

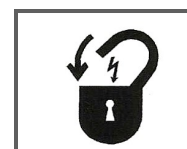
GENERAL SAFETY

1. Read and understand the Operator's Manual and all safety signs before operating, maintaining, adjusting or unplugging the Equipment .
2. Only trained persons shall operate the conveyor. An untrained operator is not qualified to operate the machine.
3. Have a first-aid kit available for use should the need arise, and know how to use it.



SEED SERIES 16 CONVEYOR

4. Provide a fire extinguisher for use in case of an accident. Store in a highly visible place.
5. Do not allow children, spectators or bystanders within hazard area of machine.
6. Wear appropriate protective gear. This includes but is not limited to:
 - A hard hat
 - Protective shoes with slip resistant soles
 - Protective goggles
 - Heavy gloves
 - Hearing protection
 - Respirator or filter mask
7. Place all controls in neutral or off, stop motor, and wait for all moving parts to stop. Then disable power source before servicing, adjusting, repairing, or unplugging.
8. Review safety related items annually with all personnel who will be operating or maintaining the Semi - Automated Pump Stand.



OPERATING SAFETY:

1. Read and understand the Operator's Manual and all safety signs before using.
2. Disconnect and disable electrical supply completely and wait for all moving parts to stop before servicing, adjusting, repairing or unplugging.
3. Clear the area of bystanders, especially children, before starting.
4. Be familiar with the machine hazard area. If anyone enters hazard area, shut down machine immediately. Clear the area before restarting.
5. Keep hands, feet, hair and clothing away from all moving and/or rotating parts.
6. Stay away from overhead obstructions and power lines during operation and transporting. Electrocution can occur without direct contact.
7. Do not operate machine when any guards are removed.
8. Inspect welds and repair if needed.

TRANSPORT SAFETY

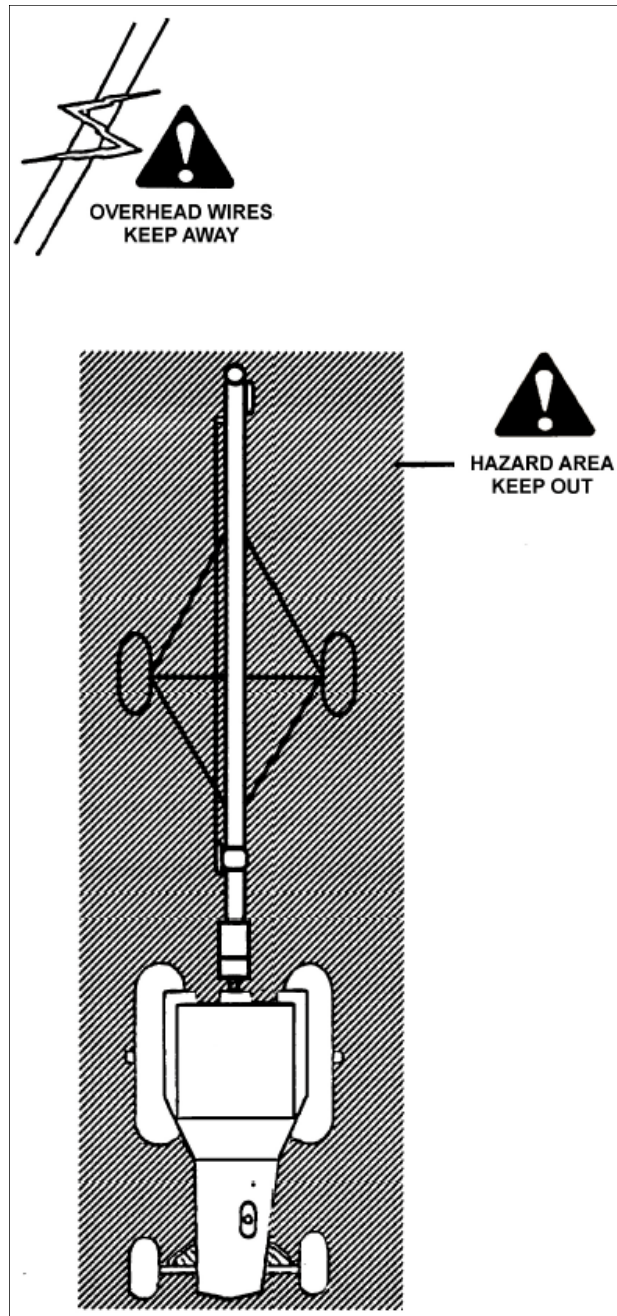
1. Read and understand ALL the information in the Operator's Manuals regarding procedures and SAFETY when moving or transporting the Conveyor.
2. Check with local authorities regarding Conveyor transport on public roads. Obey all applicable laws and regulations.
3. Always travel at a safe speed. Use caution when making corners or meeting traffic.
4. Make sure the SMV (Slow Moving Vehicle) emblem and all the lights and reflectors that are required by the local highway and transport authorities are in place, are clean and can be seen clearly by all overtaking and oncoming traffic.
5. Do not allow riders on the Conveyor or the towing vehicle when transporting.
6. Attach Conveyor to towing vehicle with a pin and retainer.
7. Lower Conveyor to its lowest position for transporting. Keep lift point at drawbar height.
8. Keep to the right and yield the right-of-way to allow faster traffic to pass. Drive on the road shoulder, if permitted by law.
9. Do not exceed 25 m.p.h. (40 km/h). Reduce speed on rough roads and surfaces.



10. Stay away from overhead obstructions and power lines when transporting. Electrocution can occur without direct contact.



11. Always use hazard warning flashers on tractor when transporting unless prohibited by law.



PLACEMENT SAFETY

1. Move only with the appropriate equipment
2. Stay away from overhead power lines when moving the Conveyor. Electrocutation can occur without direct contact.
3. Be familiar with machine hazard area. If anyone enters hazard areas, shut down machine immediately. Clear the area before restarting.
4. Operate the Conveyor on level ground free of debris. Anchor the Conveyor to prevent tipping or upending.



Before placement of the Conveyor, be sure that ground is reasonably level. The Conveyor may topple or work improperly if the ground is too uneven, damaging the equipment and/or causing personal injury.



When releasing the Conveyor from the towing vehicle, test the intake end for downward weight. Do not raise the intake end above drawbar height. When the intake end is elevated too high with machine in raise position, the balance of weight quickly transfers to the discharge end.

TIRE SAFETY

1. Failure to follow proper procedures when mounting a tire on a wheel or rim can produce an explosion which may result in serious injury or death.
2. Do not attempt to mount a tire unless you have the proper equipment and experience to do the job.
3. Have a qualified tire dealer or repair service perform required tire maintenance.
4. When replacing worn tires, make sure they meet the original tire specifications. Never undersize.

MAINTENANCE SAFETY

1. Review the Operator's Manual and all safety items before working with, maintaining or operating the Conveyor.
2. Place all controls in neutral or off, stop motors, disable power source, and wait for all moving parts to stop before servicing, adjusting, repairing or unplugging.
3. Follow good shop practices:

Keep service area clean and dry.
Be sure electrical outlets and tools are properly grounded.



4. Keep hands, feet, hair and clothing away from all moving and/or rotating parts.
5. Clear the area of bystanders, especially children, when carrying out any maintenance and repairs or making any adjustments.
6. Before resuming work, install and secure all guards when maintenance work is completed.
7. Keep safety signs clean. Replace any sign that is damaged or not clearly visible.

SAFETY LABELS

1. Keep safety labels clean and legible at all times.
2. Replace safety labels that are missing or have become illegible.
3. Replaced parts that displayed a safety label should also display the current label.
4. Replacement safety labels are available. Your authorized dealer.

How to Install Safety Labels:

- Be sure that the installation area is clean and dry.
- Be sure temperature is above 50°F (10°C).
- Decide on the exact position before you remove the backing paper.
- Remove the smallest portion of the split backing paper.
- Align the sign over the specified area and carefully press the small portion with the exposed sticky backing in place.
- Slowly peel back the remaining paper and carefully smooth the remaining portion of the sign in place.
- Small air pockets can be pierced with a pin and smoothed out using the piece of sign backing paper.



Located on the USC equipment you will find safety labels. Always be sure to read and follow all directions on the labels.



Guards provided with USC equipment are to remain in place during operation.

Think **SAFETY!** Work **SAFELY!**

REMEMBER—If Safety Labels have been damaged, removed, become illegible, or parts replaced without safety labels, new labels must be applied. New safety labels are available from your authorized dealer.

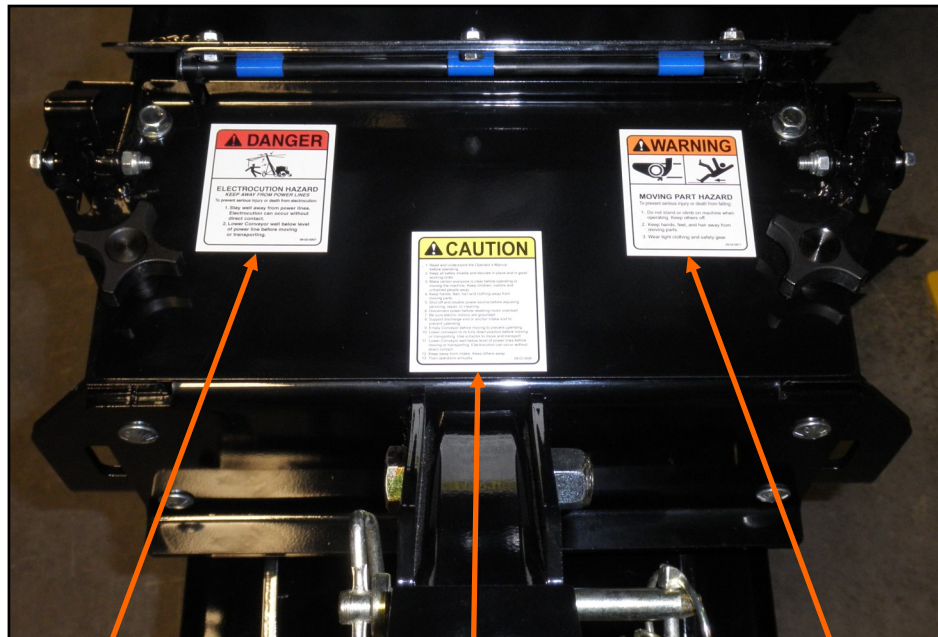


Part # 09-02-0008



Part # 09-02-0009

SEED SERIES 16 CONVEYOR



⚠ DANGER

**ELECTROCUTION HAZARD
KEEP AWAY FROM POWER LINES**

To prevent serious injury or death from electrocution:

1. Stay well away from power lines. Electrocution can occur without direct contact.
2. Lower Conveyor well below level of power line before moving or transporting.

09-02-0007

Part # 09-02-0007

⚠ CAUTION

1. Read and understand the Operator's Manual before operating.
2. Keep all safety shields and devices in place and in good working order.
3. Make certain everyone is clear before operating or moving the machine. Keep children, visitors and untrained people away.
4. Keep hands, feet, hair and clothing away from moving parts.
5. Shut off and disable power source before adjusting, servicing, repair, or cleaning.
6. Disconnect power before resetting motor overload.
7. Be sure electric motors are grounded.
8. Support discharge end or anchor intake end to prevent upending.
9. Empty Conveyor before moving to prevent upending.
10. Lower conveyor to its fully down position before moving or transporting. Use a tractor to move and transport.
11. Lower Conveyor well below level of power lines before moving or transporting. Electrocution can occur without direct contact.
12. Keep away from intake. Keep others away.
13. Train operators annually.

09-02-0006

Part # 09-02-0006

⚠ WARNING

MOVING PART HAZARD

To prevent serious injury or death from falling:

1. Do not stand or climb on machine when operating. Keep others off.
2. Keep hands, feet, and hair away from moving parts.
3. Wear tight clothing and safety gear.

09-02-0011

Part # 09-02-0011

SEED SERIES 16 CONVEYOR



! WARNING

MOVING PART HAZARD
To prevent serious injury or death from falling:

1. Do not stand or climb on machine when operating. Keep others off.
2. Keep hands, feet, and hair away from moving parts.
3. Wear tight clothing and safety gear.

09-02-0011

Part # 09-02-0011



! DANGER

ELECTROCUTION HAZARD
1. Turn machine OFF, shut down and lock out power source, unplug power cord and wait for all moving parts to stop before servicing or repairing electrical components.
2. Keep electrical components in good repair.

09-02-0010

Part # 09-02-0010



! DANGER

MISSING SHIELD HAZARD
Install and secure shield before operating.

09-02-0012

Part # 09-02-0012

SEED SERIES 16 CONVEYOR



Part # 09-02-0001

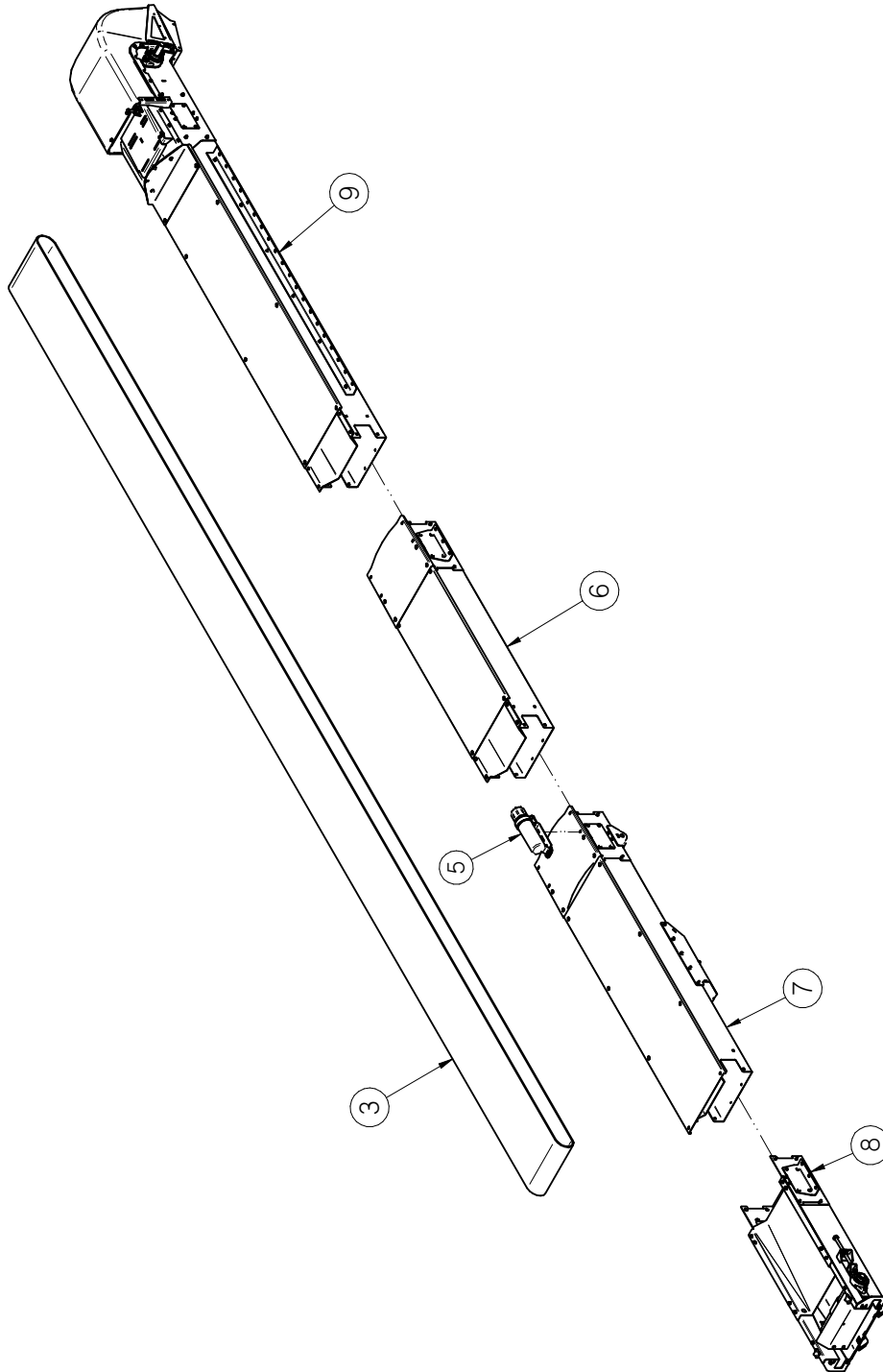


Part # 09-02-0002

SECTION
B

MECHANICAL DRAWINGS

BASE CONVEYOR SS16 - 25 FT (13-08-0835 REV A1)

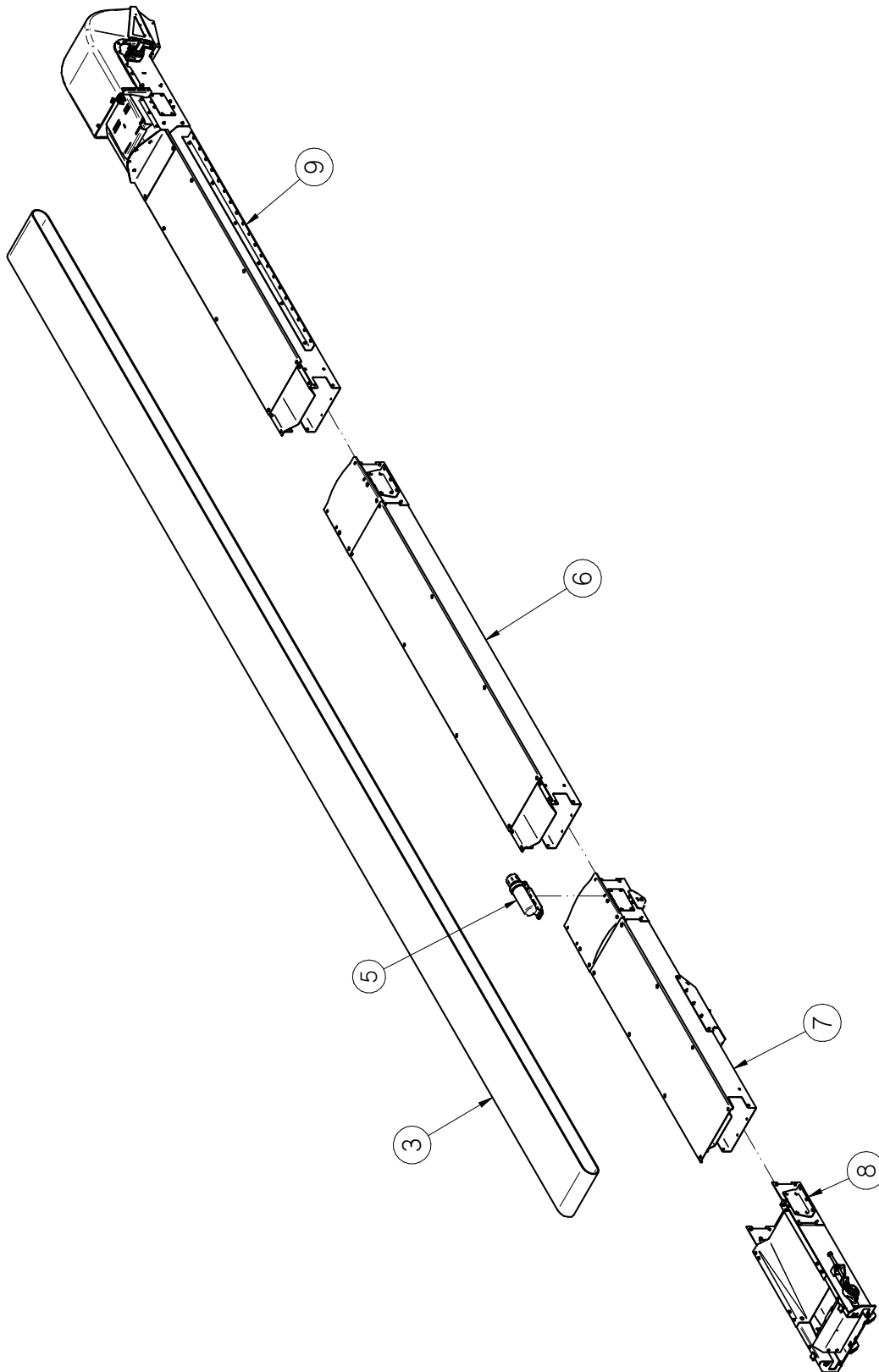


SEED SERIES 16 CONVEYOR

BASE CONVEYOR SS16 - 25 FT (13-08-0835 REV A1)

PART #		13-08-0835 REV A1		
Item #	Part #	Description	Qty	See Page
1	09-01-0070	LBL ATWK 2516	2	
2	09-02-0016	LBL ATWRK ATT BELT ALIGN	1	
3	11-02-0022	BELT CNVR CLTS 2516	1	
4	13-05-0315	DECAL PKG SS CNVRS	1	
5	13-05-0332	ASSY MANUAL TUBE MNT	1	57
6	13-08-0615	ASSY 5FT MID SECT SS16	1	26
7	13-08-0667	ASSY INLET CLEAN OUT SS16	1	28
8	13-08-0831	ASSY INLET SECT SS16 LG BRG	1	29
9	13-08-0832	ASSY HD SECT SS16 LG BRG	1	19

BASE CONVEYOR SS16 - 30 FT (13-08-0836 REV A1)

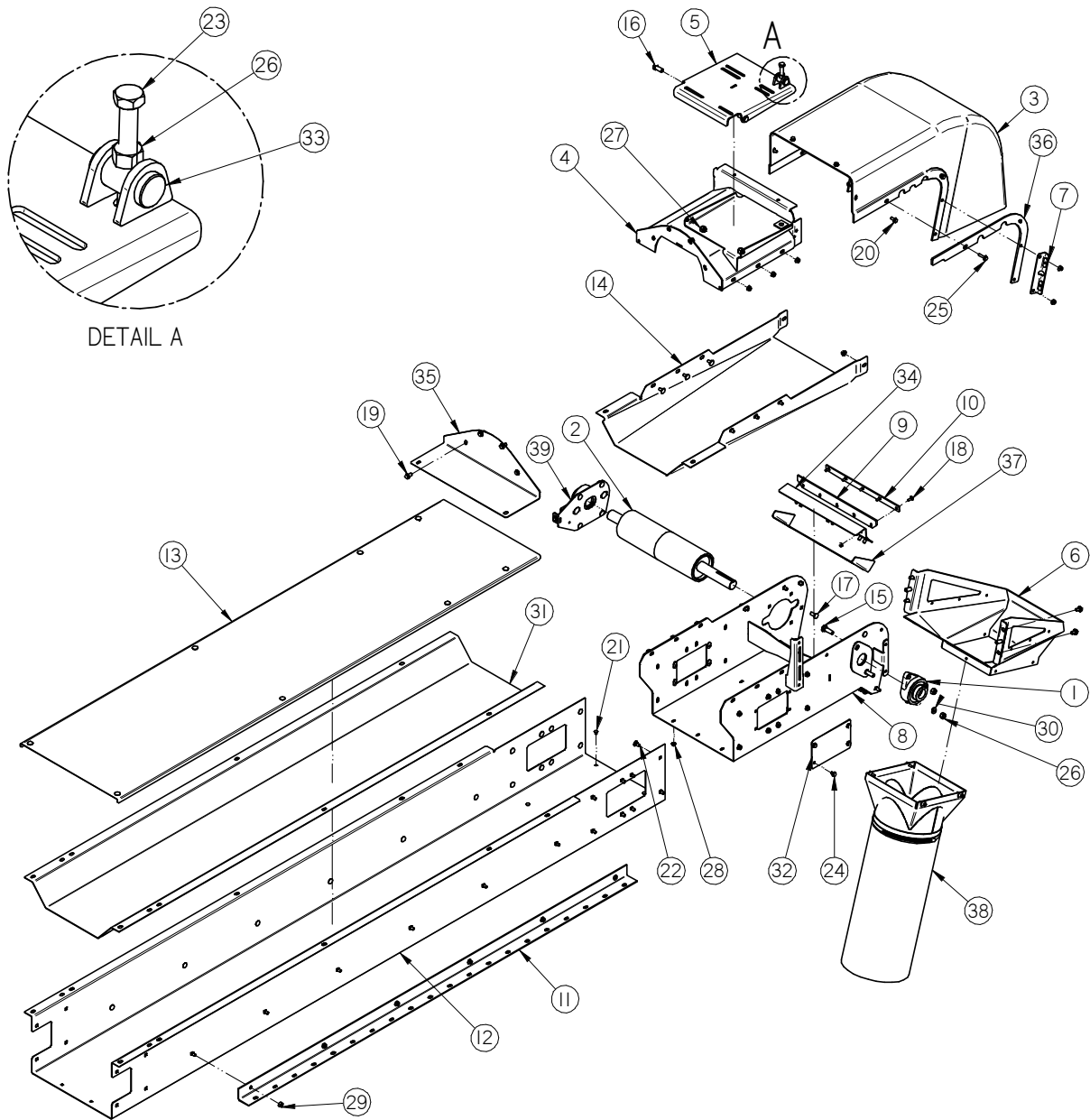


SEED SERIES 16 CONVEYOR

BASE CONVEYOR SS16 - 30 FT (13-08-0836 REV A1)

PART #		13-08-0836 REV A1		
Item #	Part #	Description	Qty	See Page
1	09-01-0071	LBL ATWK 3016	2	
2	09-02-0016	LBL ATWRK ATT BELT ALIGN	1	
3	11-02-0021	BELT CNVR CLTS 3016	1	
4	13-05-0315	DECAL PKG SS CNVRS	1	
5	13-05-0332	ASSY MANUAL TUBE MNT	1	57
6	13-08-0616	ASSY 10FT MID SECT SS16	1	27
7	13-08-0667	ASSY INLET CLEAN OUT SS16	1	28
8	13-08-0831	ASSY INLET SECT SS16 LG BRG	1	29
9	13-08-0832	ASSY HD SECT SS16 LG BRG	1	19

ASSEMBLY HEAD SECTION SS16 (13-08-0832 REV A2)



SEED SERIES 16 CONVEYOR

ASSEMBLY HEAD SECTION SS16 (13-08-0832 REV A2)

PART #		13-08-0832 REV A2		
Item #	Part #	Description	Qty	See Page
1	01-03-0077	BRG FLG MNT 1.500ID 2BOLT ECNTRC	1	
2	01-08-0131	PULLEY HEAD 4.50DIA X 15.50W LG BRG	1	
3	05-06-0128	CVR HD TS35 DD	1	
4	05-08-0548	WDMT HD CVR TS35	1	
5	05-08-0549	WDMT MTR MNT PLT LG	1	
6	05-08-0551	WDMT DSCHG HD SPOUT TS35	1	
7	05-08-0568	WDMT DSCHG HD MNT PLT	2	
8	05-08-0710	WDMT HD TS35 LG BRG	1	
9	5/10/3985	PLT S2000 CNVR BLT SCRAPER RBBR	1	
10	5/10/3986	PLT S2000 CNVR BLT SCRAPER HLDR	1	
11	5/10/4028	TRANSPORT STOP PLT EXT MNT	2	
12	5/10/4527	FRM HD SECT SS16 DD	1	
13	5/10/4528	TOP CVR HD SECT SS16 DD	1	
14	5/10/4529	TRANS HD SECT SS16 DD	1	
15	06-01-0026	BOLT CRG .500-13 X 1.75 ZP GR5	2	
16	06-01-0080	BOLT .500-13 X 1.25 ZP GR5	2	
17	06-01-0115	BOLT CRG .375-16 X 1.00 ZP GR5	4	
18	06-01-0122	BOLT CRG .250-20 X .750 ZP GR5	5	
19	06-01-0124	BOLT FLG .375-16 X .750 ZP GR5	8	
20	06-01-0138	BOLT FLG .3125-18 X .750 ZP GR5	4	
21	06-01-0150	BOLT CRG .250-20 X .500 ZP	6	
22	06-01-0153	BOLT CRG .375-16X.750 ZP SHORT NECK	50	
23	06-01-0221	BOLT .500-13 X 4.50 ZP GR5 FTH	1	
24	06-01-0261	BOLT FLG .3125-18 X .500 ZP GR5	8	
25	06-01-0343	BOLT FLG .3125-18 X 1.25 ZP GR5	4	
26	06-02-0004	NUT FULL .500-13 ZP GR5	3	
27	06-03-0004	NUT NYL LOCK .500-13 ZP GR5	2	
28	06-03-0013	NUT LOCK FLG .250-20 ZP GR5	11	
29	06-03-0014	NUT LOCK FLG .375-16 ZP GR5	58	
30	06-04-0004	WSHR LOCK SPLT .500 ZP	2	
31	102F69	TROUGH PAN 16BW HEAD SECT	1	
32	103B9A	PLT SPLICE COVER	2	
33	10414A	PIN MTR PIVOT	1	
34	10484F	PLT BAFFLE MNT	1	

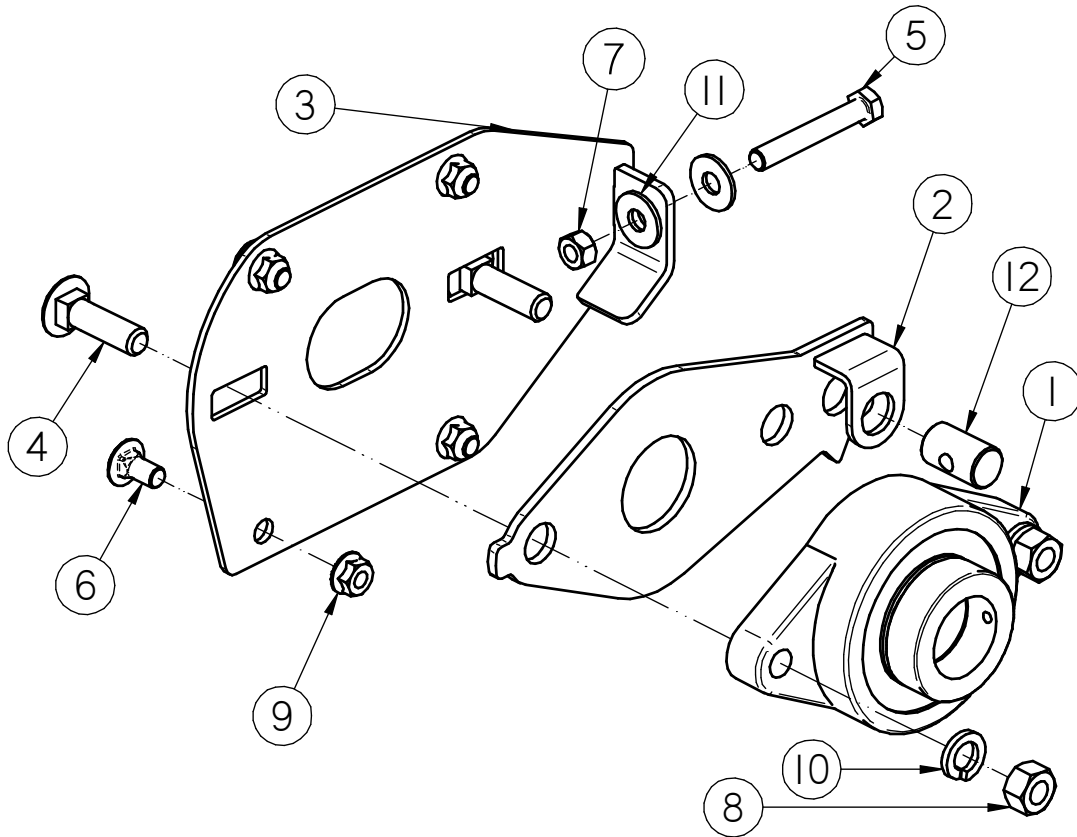
SEED SERIES 16 CONVEYOR

ASSEMBLY HEAD SECTION SS16 (13-08-0832 REV A2)

PART #		13-08-0832 REV A2		
Item #	Part #	Description	Qty	See Page
35	10510F	PLT HD CVR BACK	1	
36	106987	PLT HD REINF TS35	2	
37	106989	RBBR SEAL HD TS35	1	
38	13-05-0697	ASSY 10"ID FLEX SPOUT	1	56
39	13-08-0746	ASSY TRACKING PLT HD	1	22

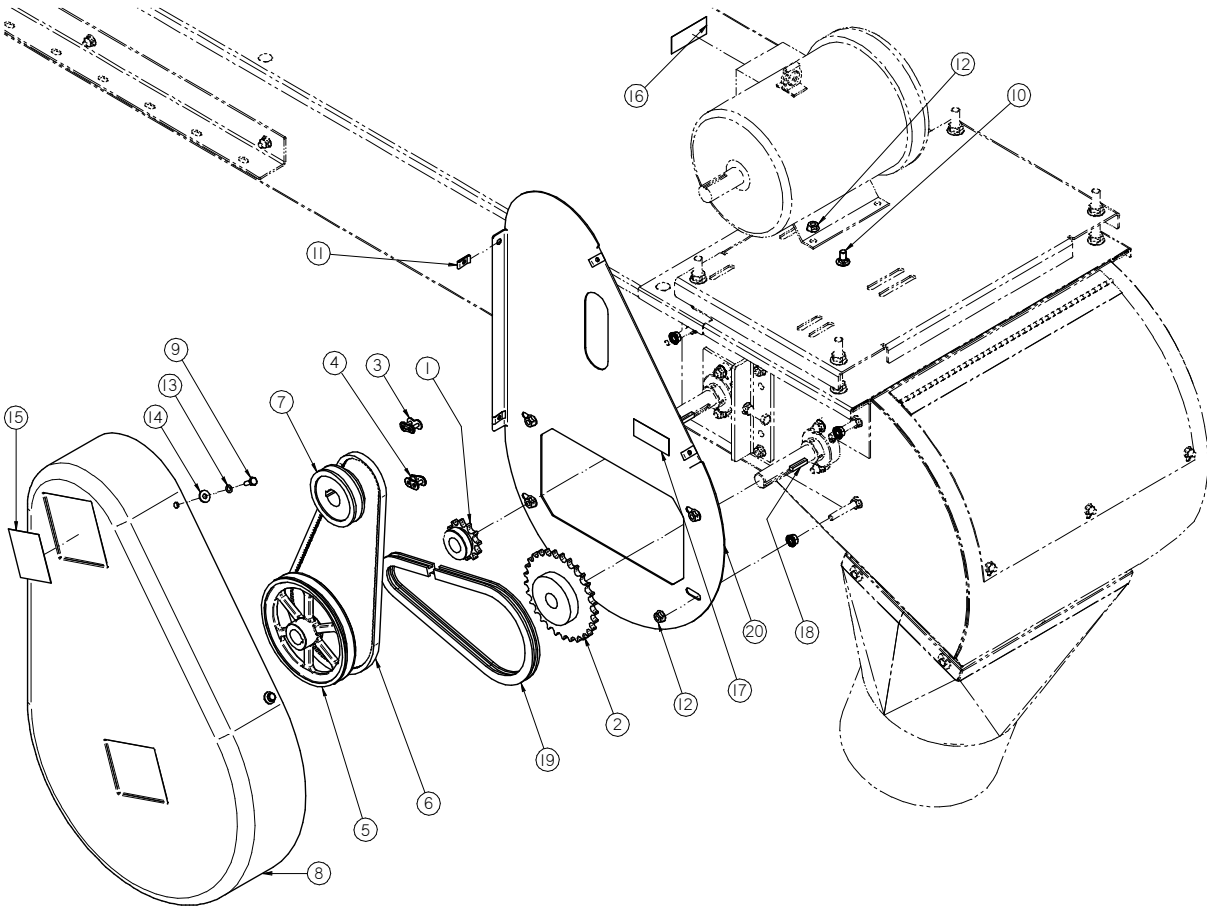
SEED SERIES 16 CONVEYOR

ASSEMBLY TRACKING PLATE SS16 (13-08-0746 REV A0)



PART #		13-08-0746 REV A0		
Item #	Part #	Description	Qty	See Page
1	01-03-0077	BRG FLG MNT 1.500ID 2BOLT ECNTRC	1	
2	05-08-0706-01	WDMT TRACKING PIVOT LG BRG	1	
3	05-08-0708-01	WDMT PLT TRACKING HD LG BRG	1	
4	06-01-0026	BOLT CRG .500-13 X 1.75 ZP GR5	2	
5	06-01-0071	BOLT .375-16 X 2.50 ZP GR5	1	
6	06-01-0153	BOLT CRG .375-16X.750 ZP SHORT NECK	4	
7	06-02-0003	NUT FULL .375-16 ZP GR5	1	
8	06-02-0004	NUT FULL .500-13 ZP GR5	2	
9	06-03-0014	NUT LOCK FLG .375-16 ZP GR5	4	
10	06-04-0004	WSHR LOCK SPLT .500 ZP	2	
11	06-05-0004	WSHR FLAT .375 ZP	2	
12	104079	PIN TRACKING PIVOT	1	

ASSEMBLY DRIVE KIT 5 HP SS16 (13-05-0210 REV A1)



SEED SERIES 16 CONVEYOR

ASSEMBLY DRIVE KIT 5 HP SS16 (13-05-0210 REV A1)

PART #		13-05-0210 REV A1		
Item #	Part #	Description	Qty	See Page
1	01-02-0076	SPKT 12T 50P 1.00 FNSH BORE	1	
2	01-02-0109	SPKT 29T 50P 1.00 FNSH BORE	1	
3	01-04-0005	CHAIN CTNG LINK 50P	1	
4	01-04-0007	CHAIN OFFSET LINK 50P	1	
5	01-08-0058	SHV MB73X1 1.000 BORE	1	
6	01-08-0059	BELT BX38	1	
7	01-08-0063	SHV BK36 1.125 FNSH BORE	1	
8	05-06-0035	SHD SIDE BELT GRD	1	
9	06-01-0006	BOLT .250-20 X .750 ZP GR5	4	
10	06-01-0153	BOLT CRG .375-16X.750 ZP SHORT NECK	4	
11	06-02-0047	NUT U-CLIP .250-20	4	
12	06-03-0014	NUT LOCK FLG .375-16 ZP GR5	12	
13	06-04-0001	WSHR LOCK SPLT .250 ZP	4	
14	06-05-0001	WSHR FLAT .250 ZP	4	
15	09-02-0009	ATWK LBL WARNING ROTATING PARTS	1	
16	09-02-0010	ATWK LBL DANGER ELECTROCUTION	1	
17	09-02-0012	ATWK LBL DANGER MISSING SHIELD	1	
18	106-3-2036	KEY .250 X 1.25 CS	3	
19	13-05-0185	CHAIN #50 28.50IN	1	
20	280-3-0053	SHIELD BACK PLT	1	

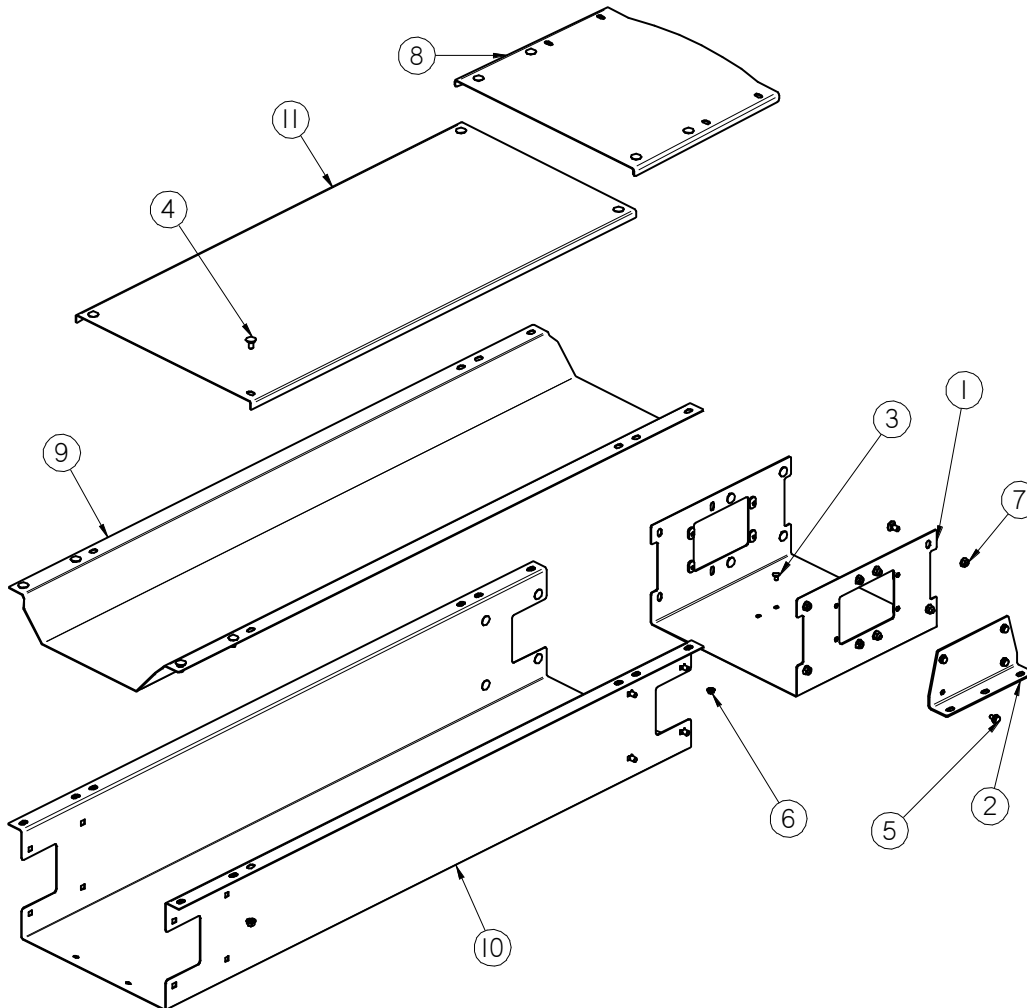
SEED SERIES 16 CONVEYOR

MOTOR CHART SS16

MOTOR CHART		
VOLTAGE	PART #	DESCRIPTION
240V / 1PH	01-01-0107	MTR 5HP 1750RPM 184T TEFC 1PH
240V / 480V / 3PH	01-01-0151	MTR EE 5HP 1750RPM 184T TEFC 3PH
380V - 415V / 3PH	01-01-0209	MTR 5HP 1425RPM 184T 50HZ 131454
575V / 3PH	01-01-0143	MTR 5HP 1760RPM 184T TEFC 3PH 575V

SEED SERIES 16 CONVEYOR

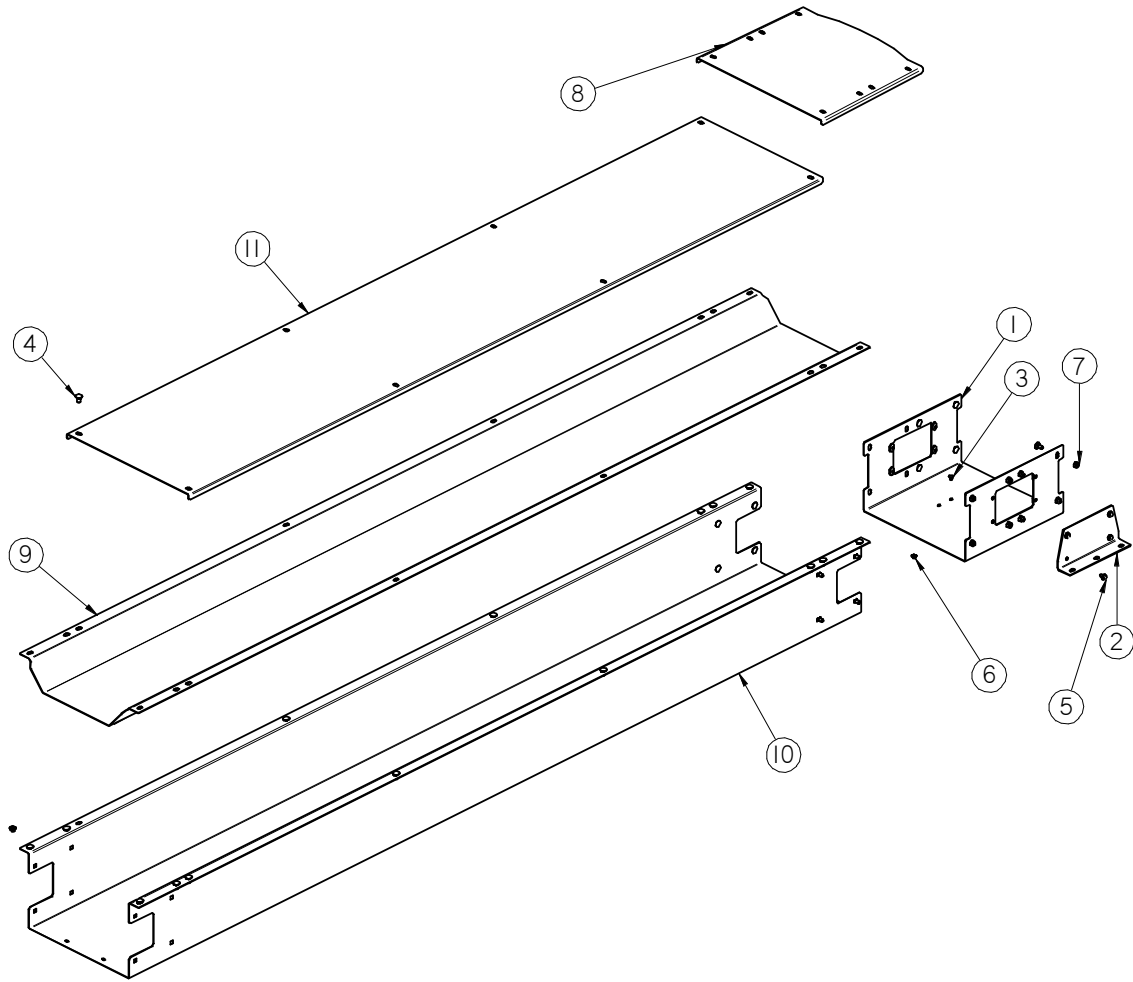
ASSEMBLY 5 FT MID SECTION SS16 (13-08-0615 REV A1)



PART #		13-08-0615 REV A1		
Item #	Part #	Description	Qty	See Page
1	05-08-0412	WDMT SPLICE 16IN	1	
2	05-10-4339	PLT STOP MNT	2	
3	06-01-0150	BOLT CRG .250-20 X .500 ZP	4	
4	06-01-0153	BOLT CRG .375-16X.750 ZP SHORT NECK	28	
5	06-01-0261	BOLT FLG .3125-18 X .500 ZP GR5	8	
6	06-03-0013	NUT LOCK FLG .250-20 ZP GR5	4	
7	06-03-0014	NUT LOCK FLG .375-16 ZP GR5	28	
8	10286F	SPLICE COVER S2000	1	
9	1030EB	TROUGHING PAN 5FT MID SECTION	1	
10	280-3-0092	FRM 5FT MID SECT	1	
11	280-3-0093	TOP CVR 5FT MID SECT	1	

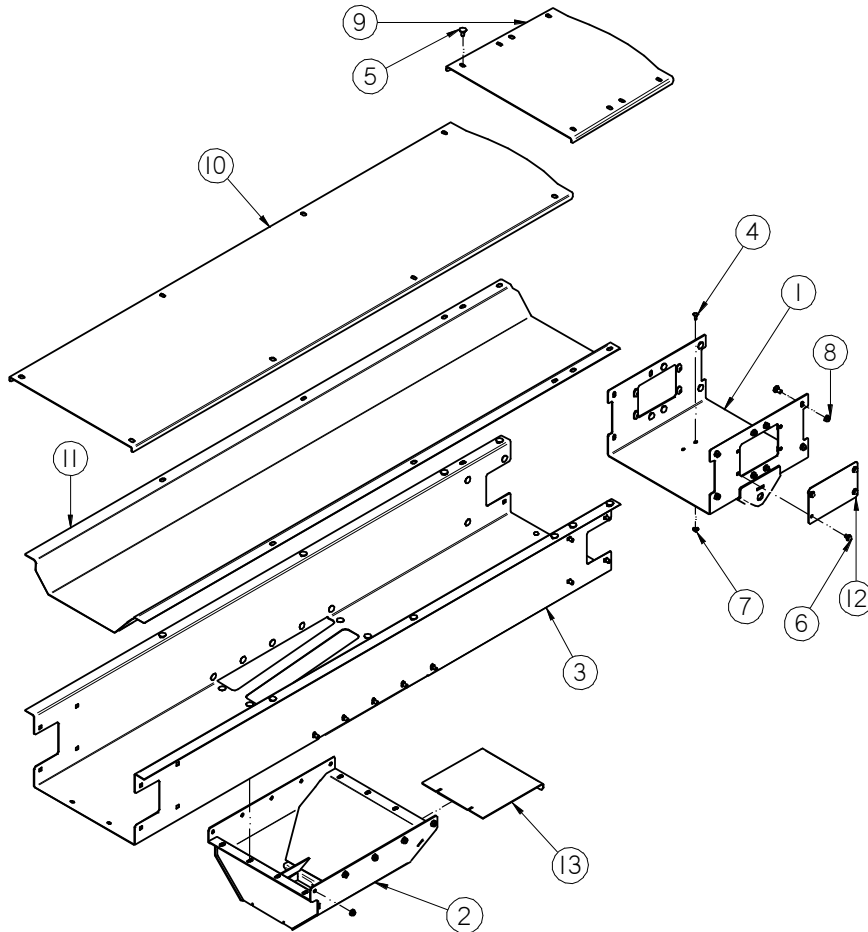
SEED SERIES 16 CONVEYOR

ASSEMBLY 10 FT MID SECTION SS16 (13-08-0616 REV A1)



PART #		13-08-0616 REV A1		
Item #	Part #	Description	Qty	See Page
1	05-08-0412	WDMT SPLICE 16IN	1	
2	05-10-4339	PLT STOP MNT	2	
3	06-01-0150	BOLT CRG .250-20 X .500 ZP	4	
4	06-01-0153	BOLT CRG .375-16X.750 ZP SHORT NECK	32	
5	06-01-0261	BOLT FLG .3125-18 X .500 ZP GR5	8	
6	06-03-0013	NUT LOCK FLG .250-20 ZP GR5	4	
7	06-03-0014	NUT LOCK FLG .375-16 ZP GR5	32	
8	10286F	SPLICE COVER S2000	1	
9	1030EC	TROUGHING PAN 10FT MID SECT	1	
10	280-3-0001	FR 10FT MID SECT	1	
11	280-3-0002	TOP CVR 10FT MID SECT	1	

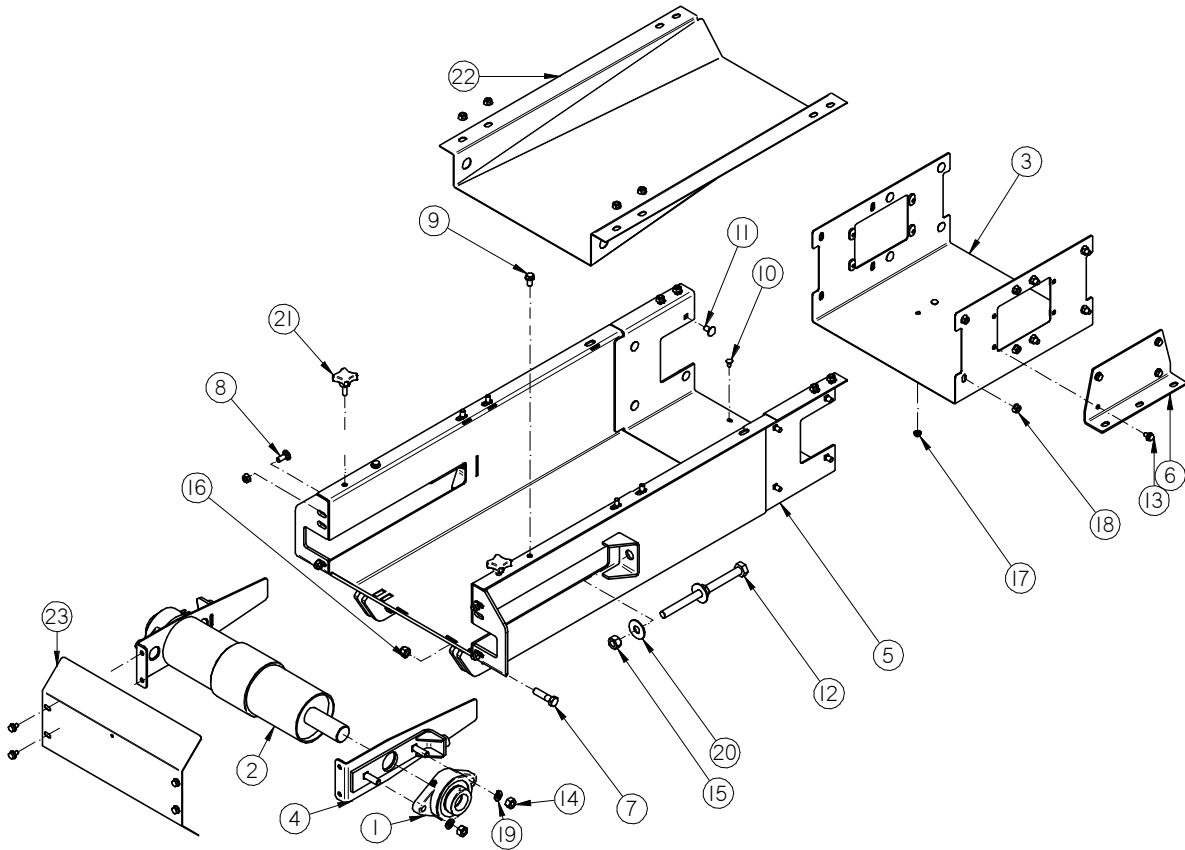
ASSEMBLY INLET CLEAN OUT SS16 (13-08-0667 REV A1)



PART #		13-08-0667 REV A1		
Item #	Part #	Description	Qty	See Page
1	05-08-0423	WDMT SPLICE TRANS MNT 16IN	1	
2	05-08-0609	WDMT CLEAN OUT SS16	1	
3	05-10-4523	FR INLET SECT CLEAN OUT	1	
4	06-01-0150	BOLT CRG .250-20 X .500 ZP	4	
5	06-01-0153	BOLT CRG .375-16X.750 ZP SHORT NECK	44	
6	06-01-0261	BOLT FLG .3125-18 X .500 ZP GR5	8	
7	06-03-0013	NUT LOCK FLG .250-20 ZP GR5	4	
8	06-03-0014	NUT LOCK FLG .375-16 ZP GR5	44	
9	10286F	SPLICE COVER S2000	1	
10	1029D2	TOP COVER INLET SECTION S2000	1	
11	1030ED	TROUGH PAN 16BW TAIL SECT	1	
12	103B9A	PLT SPLICE COVER	2	
13	1050A8	PLT DOOR CLEAN OUT SS16	1	

SEED SERIES 16 CONVEYOR

ASSEMBLY INLET SECTION SS16 (13-08-0831 REV A1)

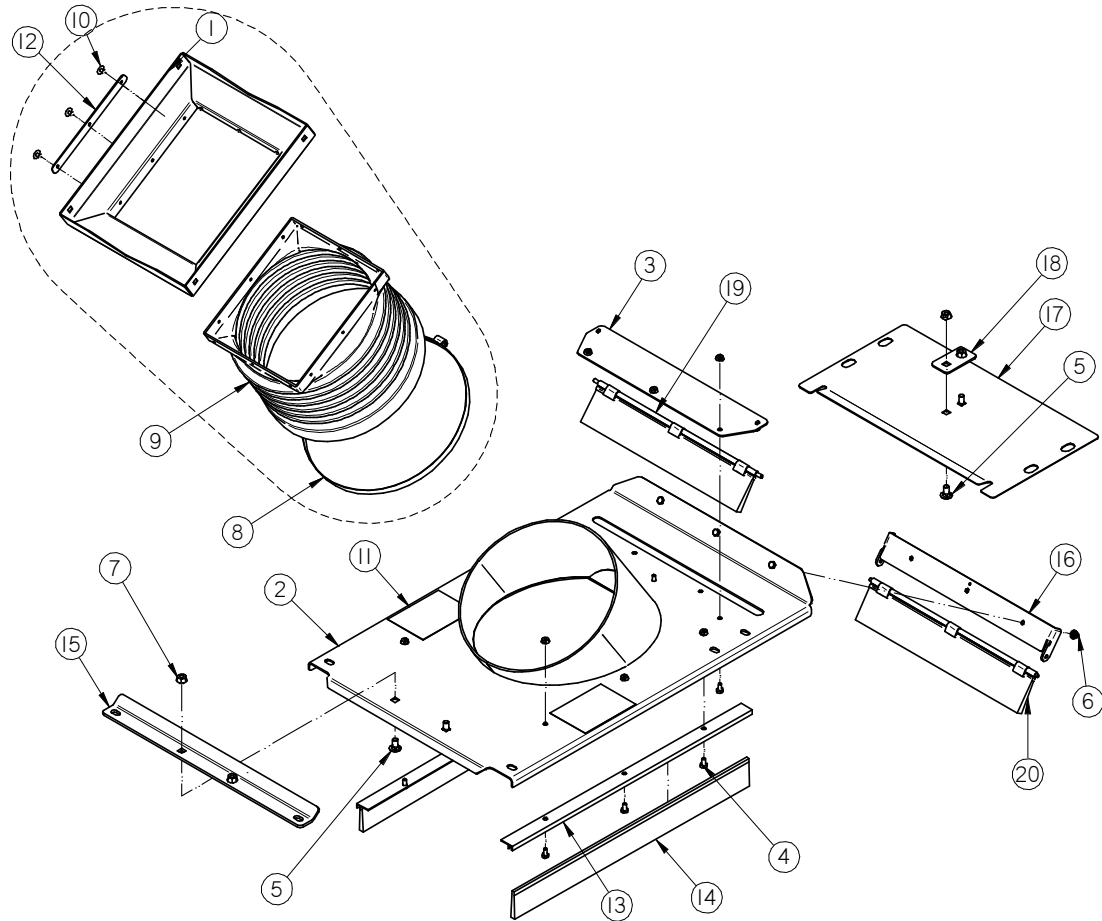


SEED SERIES 16 CONVEYOR

ASSEMBLY INLET SECTION SS16 (13-08-0831 REV A1)

PART #		13-08-0831 REV A1		
Item #	Part #	Description	Qty	See Page
1	01-03-0077	BRG FLG MNT 1.500ID 2BOLT ECNTRC	2	
2	01-08-0144	PULLEY TAIL 4.50DIA X 15.50W LG BRG	1	
3	05-08-0412	WDMT SPLICE 16IN	1	
4	05-08-0705	WDMT TAK-UP PLT LG BRG	2	
5	05-08-0751	WDMT INLET HSG SS16 LG BRG	1	
6	05-10-4339	PLT STOP MNT	2	
7	06-01-0027	BOLT .500-13 X 2.00 ZP GR5	2	
8	06-01-0115	BOLT CRG .375-16 X 1.00 ZP GR5	4	
9	06-01-0124	BOLT FLG .375-16 X .750 ZP GR5	2	
10	06-01-0150	BOLT CRG .250-20 X .500 ZP	4	
11	06-01-0153	BOLT CRG .375-16X.750 ZP SHORT NECK	24	
12	06-01-0249	BOLT .625-11 X 9.00 ZP GR5 FTH	2	
13	06-01-0261	BOLT FLG .3125-18 X .500 ZP GR5	12	
14	06-02-0004	NUT FULL .500-13 ZP GR5	4	
15	06-02-0005	NUT FULL .625-11 ZP GR5	4	
16	06-03-0004	NUT NYL LOCK .500-13 ZP GR5	2	
17	06-03-0013	NUT LOCK FLG .250-20 ZP GR5	4	
18	06-03-0014	NUT LOCK FLG .375-16 ZP GR5	30	
19	06-04-0004	WSHR LOCK SPLT .500 ZP	4	
20	06-05-0006	WSHR FLAT .625 ZP	4	
21	06-09-0066	KNOB .375 -16 X 1. 4 LUG PLASTIC	2	
22	102F31	TROUGH TRANSITION PLATE S2000	1	
23	10426C	PLT CVR TAKE-UP 16IN	1	

ASSEMBLY INLET ROUND SS16 (13-08-0421 REV C6)



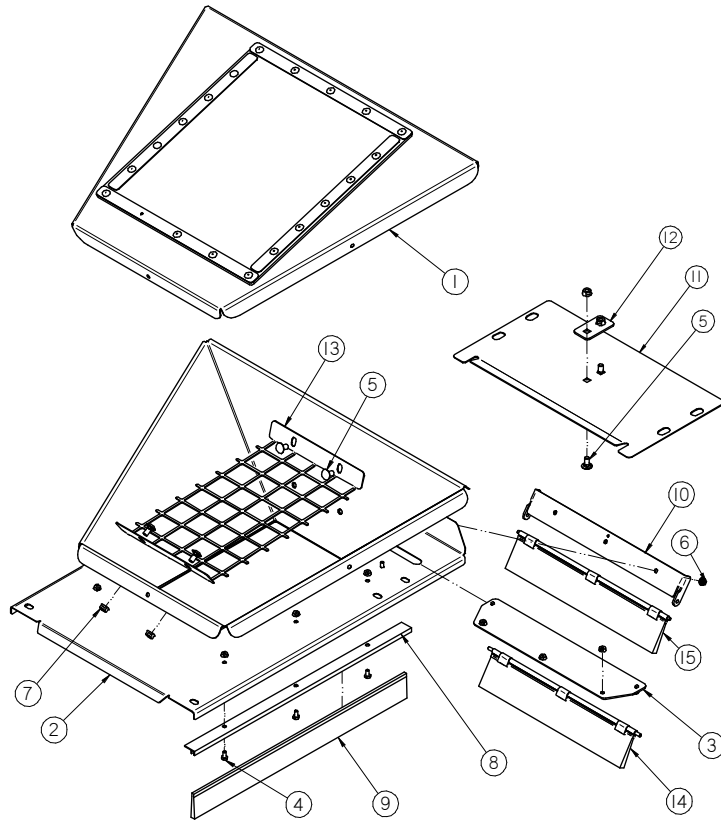
SEED SERIES 16 CONVEYOR

ASSEMBLY INLET ROUND SS16 (13-08-0421 REV C6)

PART #		13-08-0421 REV C6		
Item #	Part #	Description	Qty	See Page
1	05-08-0313	WDMT TRANS TRTR DSCHG	1	
2	05-08-0367	WDMT INLET HOPP RND SS16	1	
3	05-08-0537	WDMT PIVOT BRSH PLT TS35	1	
4	06-01-0004	BOLT .250-20 X .500 ZP GR5	12	
5	06-01-0153	BOLT CRG .375-16X.750 ZP SHORT NECK	4	
6	06-03-0013	NUT LOCK FLG .250-20 ZP GR5	12	
7	06-03-0014	NUT LOCK FLG .375-16 ZP GR5	4	
8	06-07-0032	CLMP HOSE QR 16.25 X 9/16 SS	1	
9	06-10-0047	TRANSITION SPOUT FLEXIBLE	1	
10	06-12-0022	RIVET POP .188 X .312 GRIP SS .65HD	12	
11	09-02-0001	ATWK LBL DANGER FINGERS	2	
12	102FB6	PLT CLMP TRAN SEAL	4	
13	10328A	INLET HOPPER BRUSH HOLDER	2	
14	10328B	BRUSH	2	
15	103361	PLT STIFFENER SS16	1	
16	104739	EAR BRUSH MNT	1	
17	1047FA	PLT INLET CVR TOP SS16	1	
18	106E73	SPACER CLN/OUT DOOR	1	
19	13-05-0480	ASSY BRUSH W\CLIPS 15.438	1	
20	13-05-0481	ASSY BRUSH W\CLIPS 16.062	1	

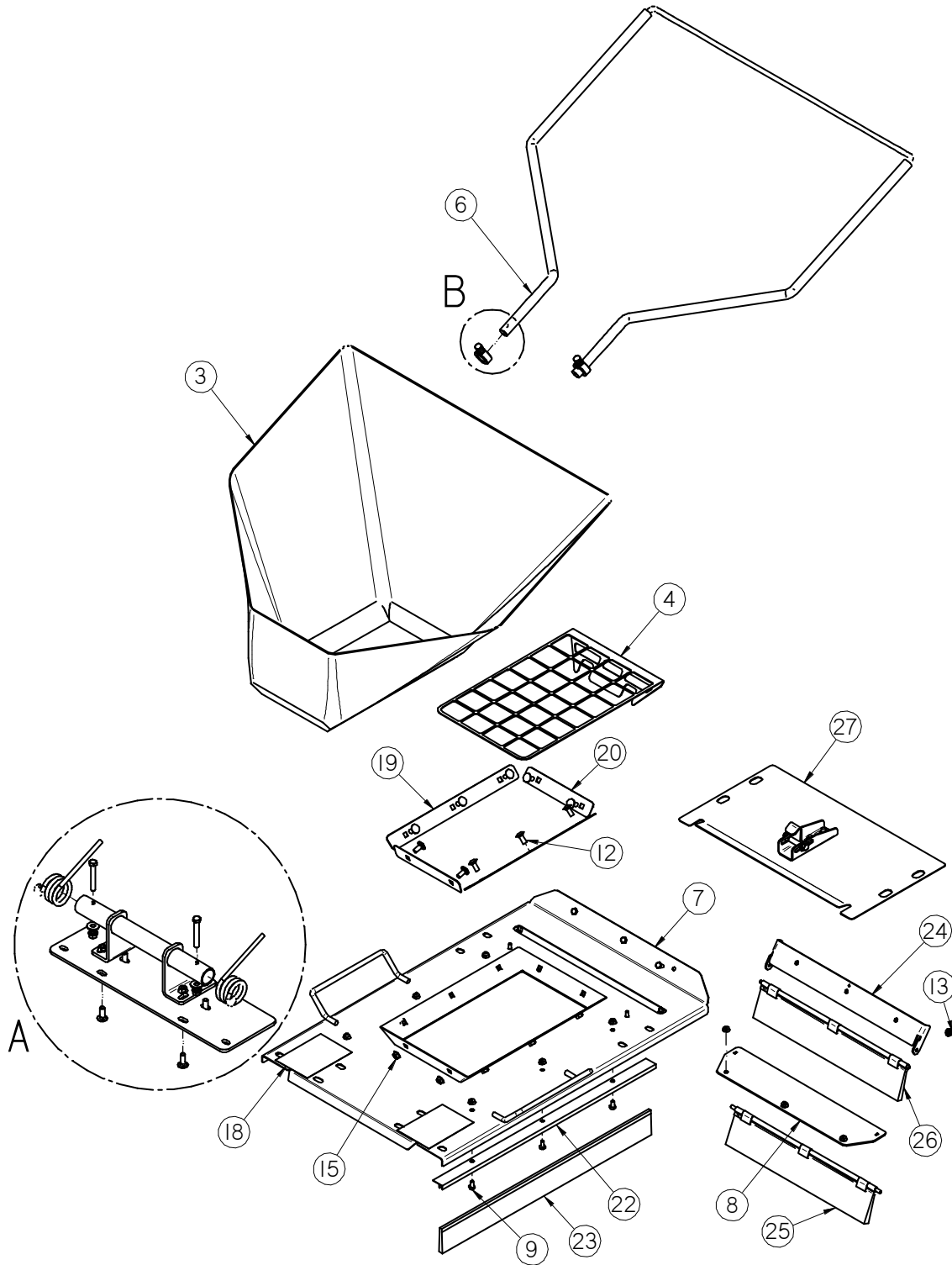
SEED SERIES 16 CONVEYOR

ASSEMBLY RIDGID INLET HOPPER SS16 (13-08-0424 REV C4)

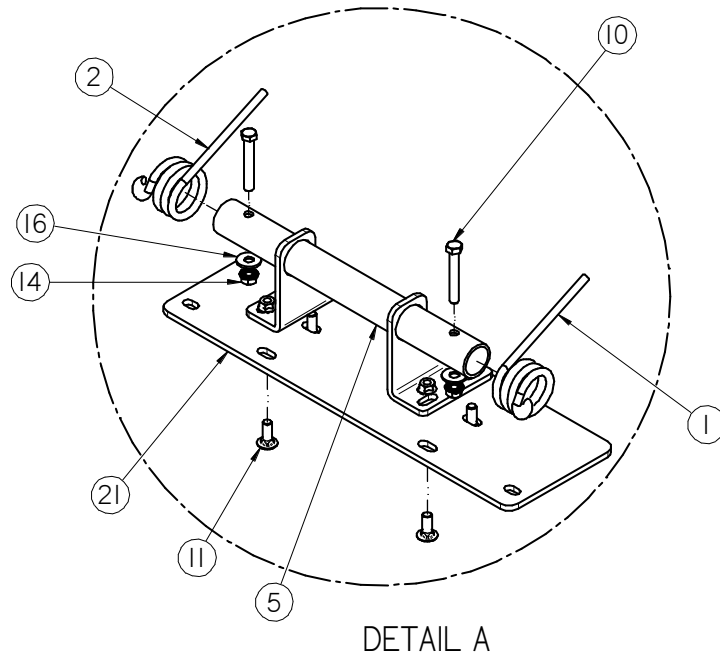


PART #		13-08-0424 REV C4		
Item #	Part #	Description	Qty	See Page
1	05-07-0292	ASSY CNVR INLET CVR S2000	1	
2	05-07-0708	WDMT SS16 RIGID INLET HOPPER	1	
3	05-08-0537	WDMT PIVOT BRSH PLT TS35	1	
4	06-01-0004	BOLT .250-20 X .500 ZP GR5	12	
5	06-01-0153	BOLT CRG .375-16X.750 ZP SHORT NECK	6	
6	06-03-0013	NUT LOCK FLG .250-20 ZP GR5	12	
7	06-03-0014	NUT LOCK FLG .375-16 ZP GR5	6	
8	10328A	INLET HOPPER BRUSH HOLDER	2	
9	10328B	BRUSH	2	
10	104739	EAR BRUSH MNT	1	
11	1047FA	PLT INLET CVR TOP SS16	1	
12	106E73	SPACER CLN/OUT DOOR	1	
13	106E74	GRATE RIGID HOPP	1	
14	13-05-0480	ASSY BRUSH W\CLIPS 15.438	1	
15	13-05-0481	ASSY BRUSH W\CLIPS 16.062	1	

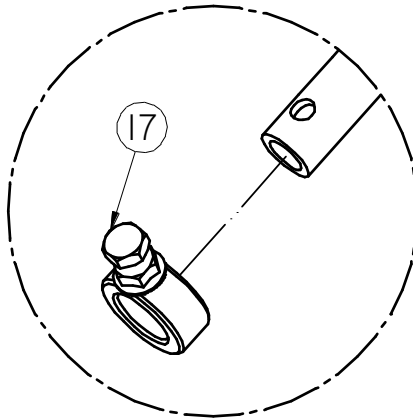
ASSEMBLY COLLAPSIBLE INLET HOPPER SS16 (13-08-0425 REV D2)



ASSEMBLY COLLAPSIBLE INLET HOPPER SS16 (13-08-0425 REV D2)



DETAIL A



DETAIL B

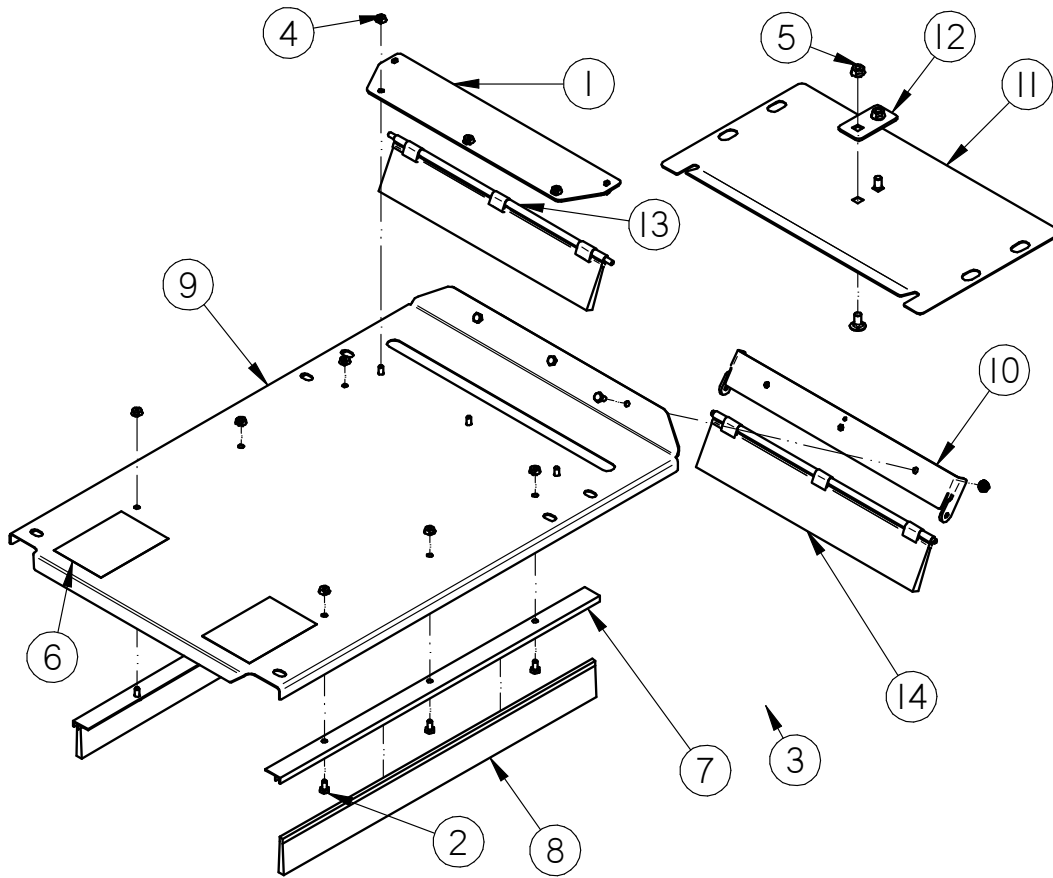
SEED SERIES 16 CONVEYOR

ASSEMBLY COLLAPSIBLE INLET HOPPER SS16 (13-08-0425 REV D2)

PART #		13-08-0425 REV D2		
Item #	Part #	Description	Qty	See Page
1	01-04-0061	CLPSBL HOPP SPRING LH	1	
2	01-04-0062	CLPSBL HOPP SPRING RH	1	
3	01-13-0011	S2000 CLPSBL TARP	1	
4	05-06-0095	S2000 CLPSBL HOPP GRATE	1	
5	05-07-0579	WDMT S2000 SLPSBL PIVOT	1	
6	05-07-0580	WDMT S2000 CLPSBL TOP FRM	1	
7	05-07-0709	WDMT SS16 INLT HOPP CVR CLPSBL	1	
8	05-08-0537	WDMT PIVOT BRSH PLT TS35	1	
9	06-01-0004	BOLT .250-20 X .500 ZP GR5	12	
10	06-01-0071	BOLT .375-16 X 2.50 ZP GR5	2	
11	06-01-0115	BOLT CRG .375-16 X 1.00 ZP GR5	4	
12	06-01-0171	BOLT CRG .313-18X.750ZP SHORT NECK	10	
13	06-03-0013	NUT LOCK FLG .250-20 ZP GR5	14	
14	06-03-0014	NUT LOCK FLG .375-16 ZP GR5	9	
15	06-03-0019	NUT LOCK FLG .313-18 ZP GR5	10	
16	06-05-0004	WSHR FLAT .375 ZP	2	
17	06-12-0057	COLLAR SET 1 5/16OD X 13/16ID	2	
18	09-02-0001	ATWK LBL DANGER FINGERS	2	
19	1027DC	S2000 CLPSBL TARP RET SIDE	2	
20	1027DD	S2000 CLPSBL TARP RET FNT	2	
21	102FA7	PLT MNT CLPSBL S2000	1	
22	10328A	INLET HOPPER BRUSH HOLDER	2	
23	10328B	BRUSH	2	
24	104739	EAR BRUSH MNT	1	
25	13-05-0480	ASSY BRUSH W\CLIPS 15.438	1	
26	13-05-0481	ASSY BRUSH W\CLIPS 16.062	1	
27	13-08-0738	ASSY CLN-OUT DOOR W/LATCHES SS16	1	

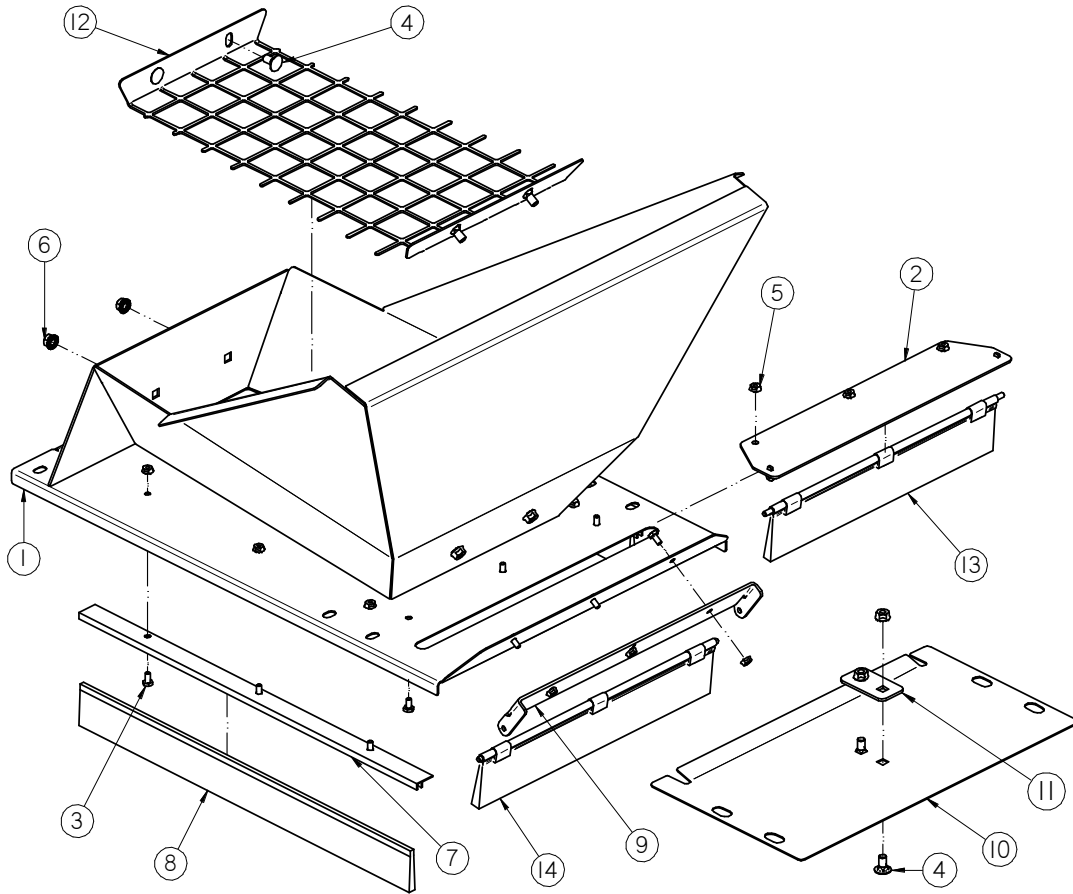
SEED SERIES 16 CONVEYOR

ASSEMBLY BLANK INLET SS16 (13-08-0442 REV C3)



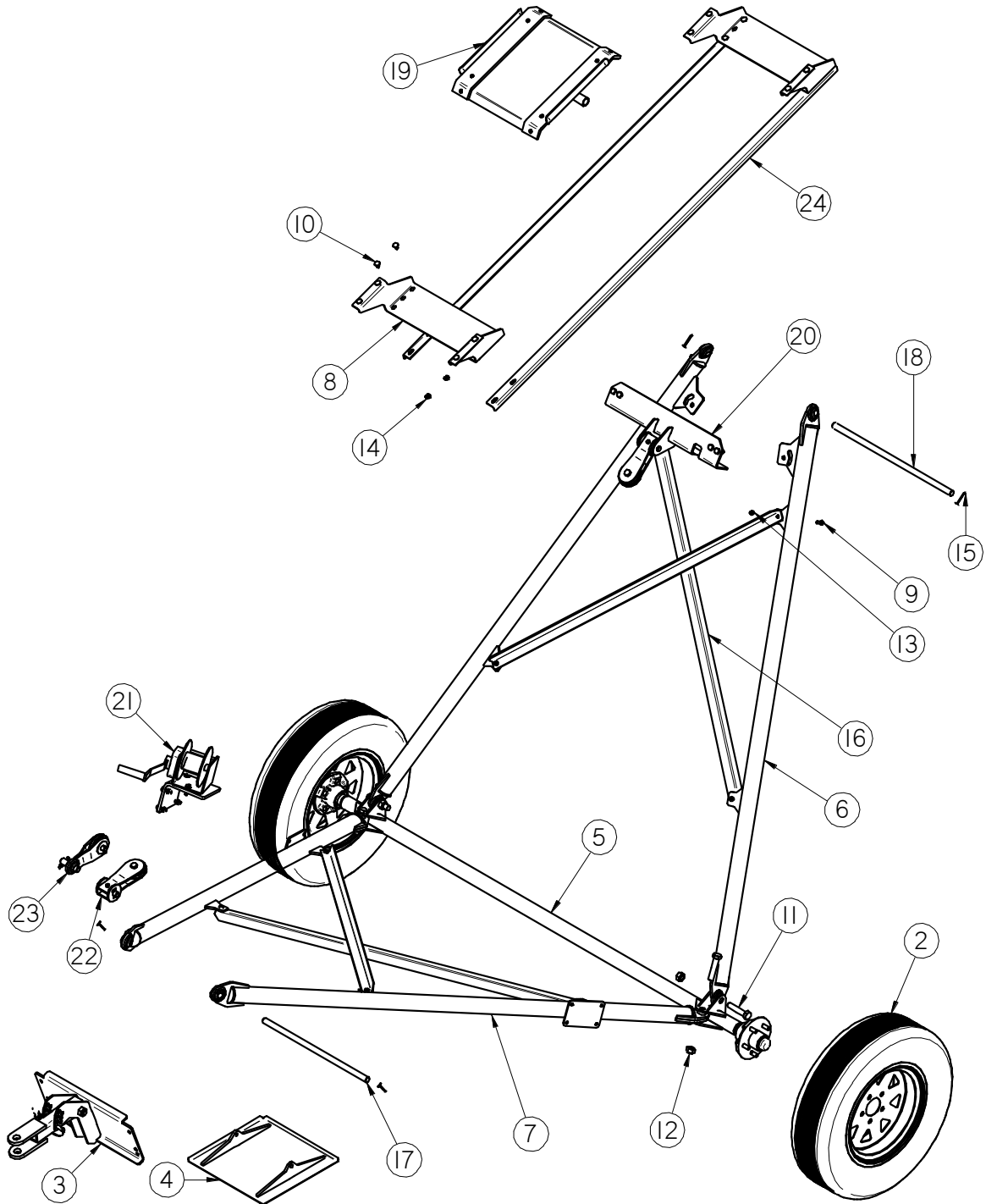
PART #		13-08-0442 REV C3		
Item #	Part #	Description	Qty	See Page
1	05-08-0537	WDMT PIVOT BRSH PLT TS35	1	
2	06-01-0004	BOLT .250-20 X .500 ZP GR5	12	
3	06-01-0153	BOLT CRG .375-16X.750 ZP SHORT NECK	2	
4	06-03-0013	NUT LOCK FLG .250-20 ZP GR5	12	
5	06-03-0014	NUT LOCK FLG .375-16 ZP GR5	2	
6	09-02-0001	ATWK LBL DANGER FINGERS	2	
7	10328A	INLET HOPPER BRUSH HOLDER	2	
8	10328B	BRUSH	2	
9	1033A2	PLT INLET BLANK SS16	1	
10	104739	EAR BRUSH MNT	1	
11	1047FA	PLT INLET CVR TOP SS16	1	
12	106E73	SPACER CLN/OUT DOOR	1	
13	13-05-0480	ASSY BRUSH W\CLIPS 15.438	1	
14	13-05-0481	ASSY BRUSH W\CLIPS 16.062	1	

ASSEMBLY LARGE RIDGID INLET HOPPER SS16 (13-08-0636 REV C3)



PART #		13-08-0636 REV C3		
Item #	Part #	Description	Qty	See Page
1	05-08-0526	WDMT LG INLET SS16	1	
2	05-08-0537	WDMT PIVOT BRSH PLT TS35	1	
3	06-01-0004	BOLT .250-20 X .500 ZP GR5	12	
4	06-01-0153	BOLT CRG .375-16X.750 ZP SHORT NECK	6	
5	06-03-0013	NUT LOCK FLG .250-20 ZP GR5	12	
6	06-03-0014	NUT LOCK FLG .375-16 ZP GR5	6	
7	10328A	INLET HOPPER BRUSH HOLDER	2	
8	10328B	BRUSH	2	
9	104739	EAR BRUSH MNT	1	
10	1047FA	PLT INLET CVR TOP SS16	1	
11	106E73	SPACER CLN/OUT DOOR	1	
12	106E85	GRATE RIGID HOPP LG	1	
13	13-05-0480	ASSY BRUSH W\CLIPS 15.438	1	
14	13-05-0481	ASSY BRUSH W\CLIPS 16.062	1	

ASSEMBLY UNDER CARRIAGE SS16 25 FT (05-08-0340 REV B7)

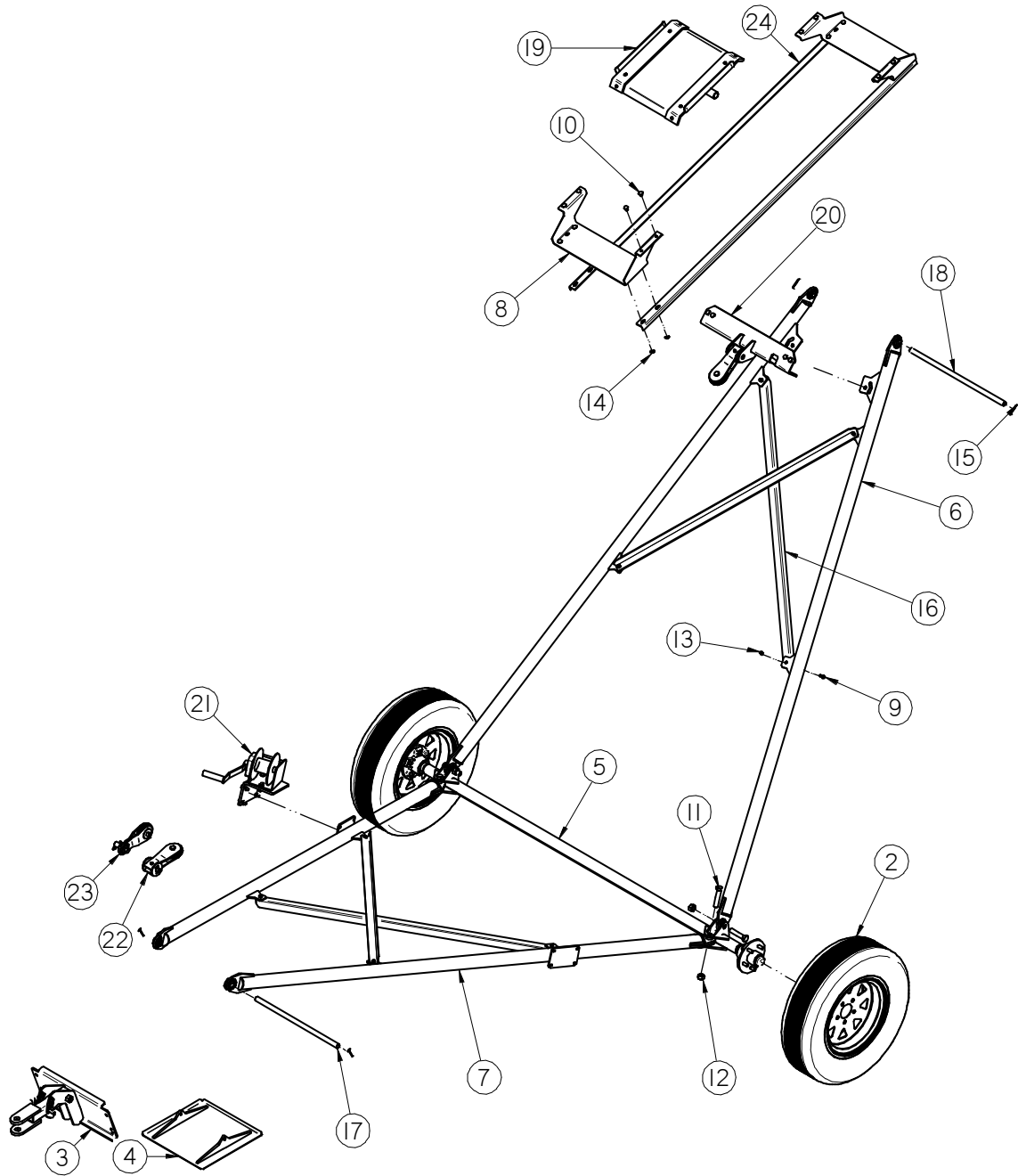


SEED SERIES 16 CONVEYOR

ASSEMBLY UNDER CARRIAGE SS16 25 FT (05-08-0340 REV B7)

PART #		05-08-0340 REV B7		
Item #	Part #	Description	Qty	See Page
1	01-04-0070	WIRE ROPE .25 DIA X 45FT	1	
2	01-06-0150	ASSY WHL/TIRE 5BLT-15.0X6.0 6PLY	2	
3	05-07-0641	ASSY SS16 TAIL SECT HITCH	1	
4	05-08-0218	WDMT PAD BL CNVR	1	
5	05-08-0322	ASSY AXLE SECT UNCG	1	
6	05-08-0352	WDMT UPPER ARM SS16 25FT UNCG	2	
7	05-08-0590	WDMT LOWER ARM CNVR 84.19	2	
8	05-10-2185	PLT TRANSPORT SLIDE STOP 30FT PORT	2	
9	06-01-0016	BOLT CRG .375-16 X 1.00 ZP RGR5	8	
10	06-01-0153	BOLT CRG .375-16X.750 ZP SHORT NECK	16	
11	06-01-0218	BOLT .75-10 X 3.5 ZP GR8	4	
12	06-02-0029	NUT NYL LOCK .75-10 ZP NE NYLON INSERT	4	
13	06-03-0003	NUT NYLOCK .375-16 ZP GR8	8	
14	06-03-0014	NUT LOCK FLG .375-16 ZP GR5	16	
15	06-09-0023	.188 X 2.000 ZP COTTERPIN	4	
16	102FBC	PLT X BRACE UNCG	4	
17	102FE5	LOWER ARM PIN SS16 UNCG	1	
18	102FE6	UPPER ARM PIN SS16 UNCG	1	
19	13-05-0232	ASSY TRANSPORT SLIDE 16IN	1	
20	13-08-0645	ASSY UPPER X-MEMBER CNVR	1	45
21	13-08-0658	KIT WINCH CNVRS 20 THRU 35	1	
22	13-08-0684	ASSY PULLEY PIVOT CNVRS	1	43
23	13-08-0685	ASSY PLY ANGLE PIVOT CNVRS	1	44
24	280-3-0089	TRANSPORT SLIDE TRAP	2	

ASSEMBLY UNDER CARRIAGE SS16 30 FT (05-08-0341 REV B7)

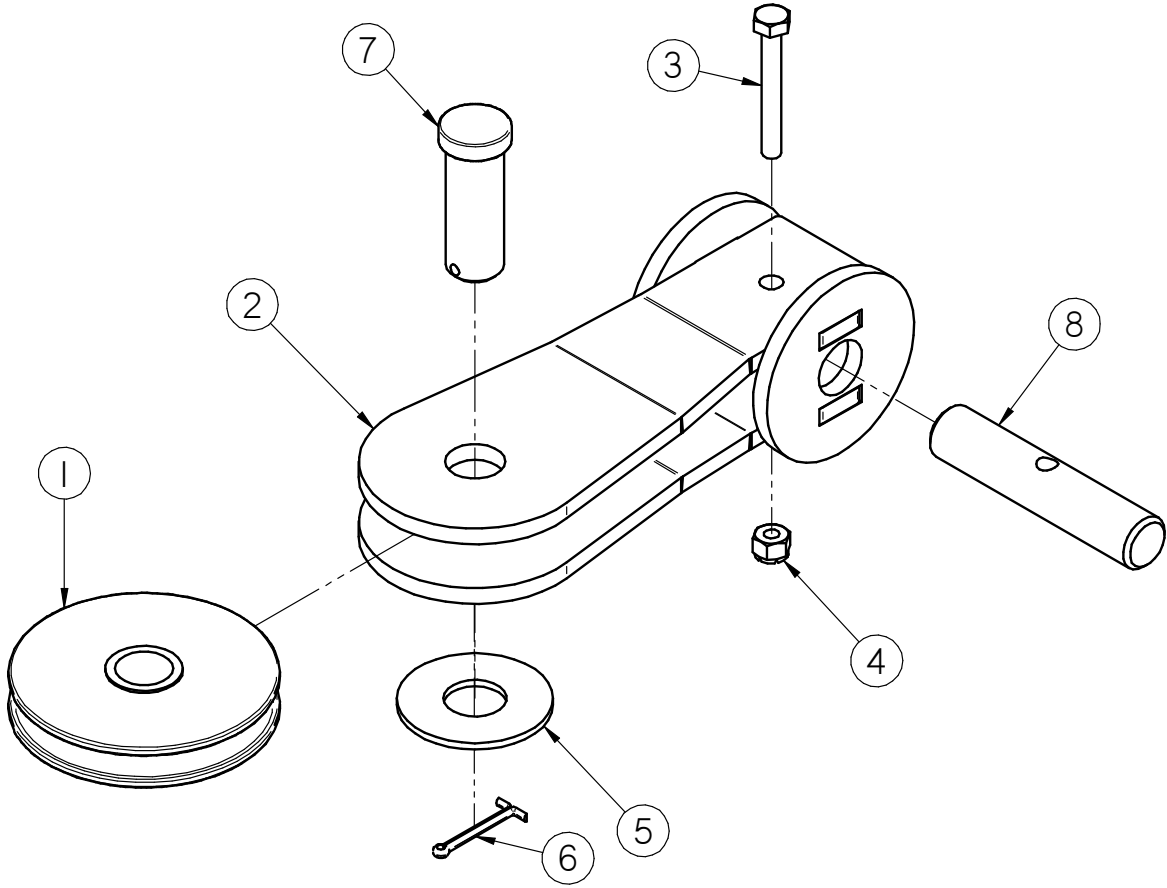


SEED SERIES 16 CONVEYOR

ASSEMBLY UNDER CARRIAGE SS16 30 FT (05-08-0341 REV B7)

PART #		05-08-0341 REV B7		
Item #	Part #	Description	Qty	See Page
1	01-04-0071	WIRE ROPE .25 DIA X 57FT	1	
2	01-06-0150	ASSY WHL/TIRE 5BLT-15.0X6.0 6PLY	2	
3	05-07-0641	ASSY SS16 TAIL SECT HITCH	1	
4	05-08-0218	WDMT PAD BL CNVR	1	
5	05-08-0322	ASSY AXLE SECT UNCG	1	
6	05-08-0365	WDMT UPPER ARM SS16 30FT UNCG	2	
7	05-08-0591	WDMT LOWER ARM CNVR 106.06	2	
8	05-10-2185	PLT TRANSPORT SLIDE STOP 30FT PORT	2	
9	06-01-0016	BOLT CRG .375-16 X 1.00 ZP RGR5	8	
10	06-01-0153	BOLT CRG .375-16X.750 ZP SHORT NECK	8	
11	05-08-0218	WDMT PAD BL CNVR	1	
12	06-02-0029	NUT NYL LOCK .75-10 ZP NE NYLON INSERT	4	
13	06-03-0003	NUT NYLOCK .375-16 ZP GR8	8	
14	06-03-0014	NUT LOCK FLG .375-16 ZP GR5	16	
15	06-09-0023	.188 X 2.000 ZP COTTERPIN	4	
16	102FBC	PLT X BRACE UNCG	4	
17	102FE5	LOWER ARM PIN SS16 UNCG	1	
18	102FE6	UPPER ARM PIN SS16 UNCG	1	
19	13-05-0232	ASSY TRANSPORT SLIDE 16IN	1	
20	13-08-0645	ASSY UPPER X-MEMBER CNVR	1	45
21	13-08-0658	KIT WINCH CNVRS 20 THRU 35	1	
22	13-08-0684	ASSY PULLEY PIVOT CNVRS	1	43
23	13-08-0685	ASSY PLY ANGLE PIVOT CNVRS	1	44
24	280-3-0089	TRANSPORT SLIDE TRAP	2	

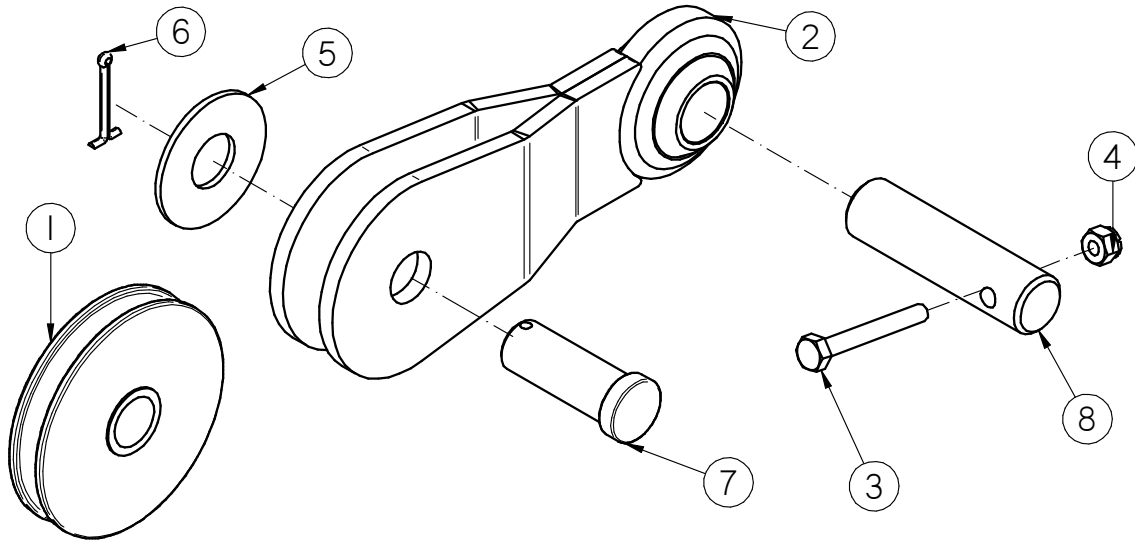
ASSEMBLY PULLEY PIVOT SS16 (13-08-0684 REV A1)



PART #		13-08-0684 REV A1		
Item #	Part #	Description	Qty	See Page
1	01-02-0074	PLY WIRE ROPE 3 IN DIA	1	
2	05-08-0552	WDMT CBL SHV MNT	1	
3	06-01-0097	BOLT .250-20 X 2.00 ZP GR5	1	
4	06-03-0001	NUT NYL LOCK .250-20 ZP GR5	1	
5	06-05-0007	WSHR FLAT .750 ZP	1	
6	06-09-0087	PIN CTR .125 X 1.50 ZP	1	
7	06-09-0094	PIN CLVS .750 X 2.00 ZP	1	
8	104AAE	PIN PIVOT CENTER	1	

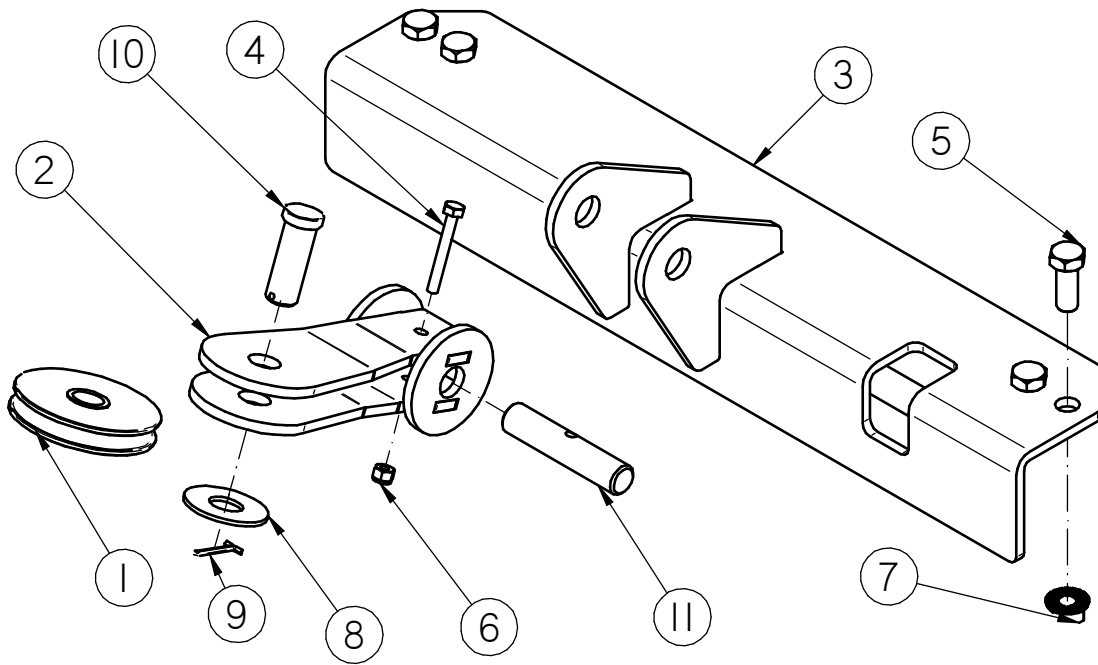
SEED SERIES 16 CONVEYOR

ASSEMBLY PULLEY ANGLE PIVOT SS16 (13-08-0685 REV A2)



PART #		13-08-0685 REV A2		
Item #	Part #	Description	Qty	See Page
1	01-02-0074	PLY WIRE ROPE 3 IN DIA	1	
2	05-08-0555	WDMT SHV MNT PIVOT	1	
3	06-01-0097	BOLT .250-20 X 2.00 ZP GR5	1	
4	06-03-0001	NUT NYL LOCK .250-20 ZP GR5	1	
5	06-05-0007	WSHR FLAT .750 ZP	1	
6	06-09-0087	PIN CTRR .125 X 1.50 ZP	1	
7	06-09-0094	PIN CLVS .750 X 2.00 ZP	1	
8	104AC8	PIN PIVOT END	1	

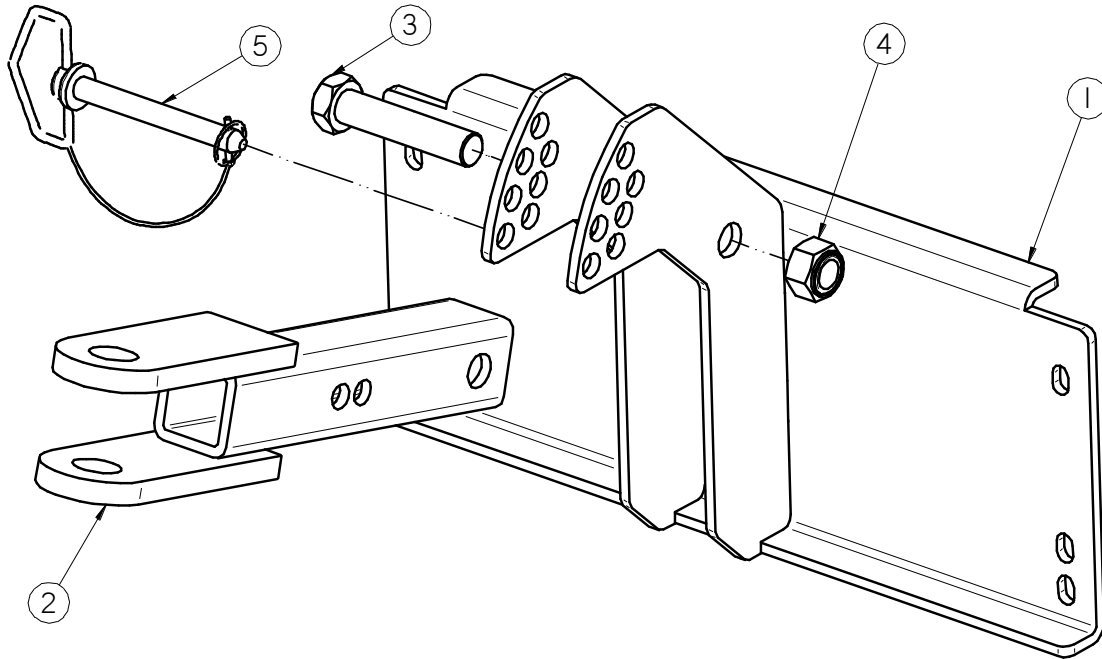
ASSEMBLY UPPER X-MEMBER SS16 (13-08-0645 REV A2)



PART #		13-08-0645 REV A2		
Item #	Part #	Description	Qty	See Page
1	01-02-0074	PLLY WIRE ROPE 3 IN DIA	1	
2	05-08-0552	WDMT CBL SHV MNT	1	
3	05-08-0554	WDMT UPPER X-MEMBER CNVR	1	
4	06-01-0097	BOLT .250-20 X 2.00 ZP GR5	1	
5	06-01-0193	BOLT .500-13 X 1.25 HH ZP GR8	4	
6	06-03-0001	NUT NYL LOCK .250-20 ZP GR5	1	
7	06-03-0015	NUT LOCK FLG .500-13 ZP GR5	4	
8	06-05-0007	WSHR FLAT .750 ZP	1	
9	06-09-0087	PIN CTRR .125 X 1.50 ZP	1	
10	06-09-0094	PIN CLVS .750 X 2.00 ZP	1	
11	104AAE	PIN PIVOT CENTER	1	

SEED SERIES 16 CONVEYOR

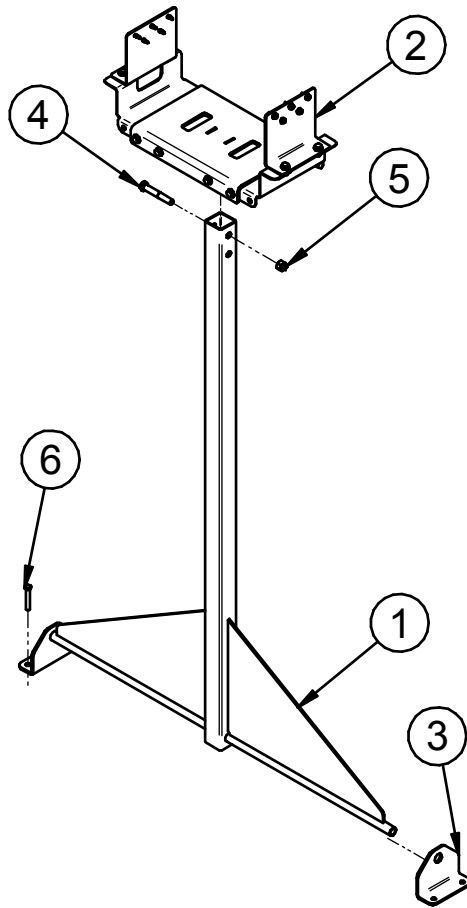
ASSEMBLY HITCH SS16 (05-07-0641 REV A3)



PART #		05-07-0641 REV A3		
Item #	Part #	Description	Qty	See Page
1	05-07-0640	WDMT HITCH MNT SS16	1	
2	05-08-0303	WDMT RECV HITCH S2000	1	
3	06-01-0218	BOLT .750-10 X 3.50 ZP GR8	1	
4	06-02-0029	NUT NYL LOCK .750-10 ZP GR5	1	
5	06-09-0053	PIN HITCH .500 X 4.0 LG W-LINCH PIN	1	

SEED SERIES 16 CONVEYOR

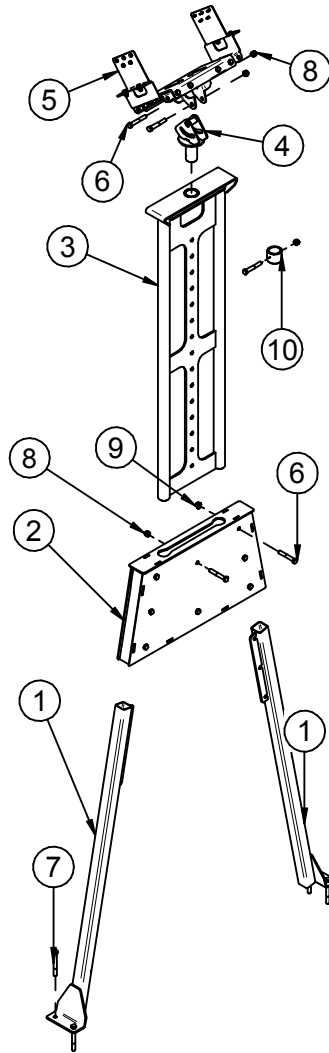
ASSEMBLY STAND S1 0 - 56 (05-05-0179 REV A0)



PART #		05-05-0179 REV A0		
Item #	Part #	Description	Qty	See Page
1	05-03-0850	WDMT 15FT S2000 CART SUPP	1	
2	05-05-0178	ASSY HD STND ADJ	1	
3	05-10-3628	BRKT SUPP MNT CNVR TAIL TALL	2	
4	06-01-0029	BOLT .500-13 X 3.25 ZP GR5	1	
5	06-03-0004	NUT NYL LOCK .500-13 ZP GR5	1	
6	08-07-0039	BAG SHPG 10X16 POLY LAM W/TIE	1	
7	13-10-0012	KIT INSTALL CNVR STAND 0 TO 56IN	1	
PART #		13-10-0012 REV A0		
Item #	Part #	Description	Qty	See Page
1	06-01-0220	BOLT 3/8-16 CONC ANCHOR ZP 3.75	4	
2	06-06-0037	SCRW SDST .250-14 X 1.000 HH ZP	10	

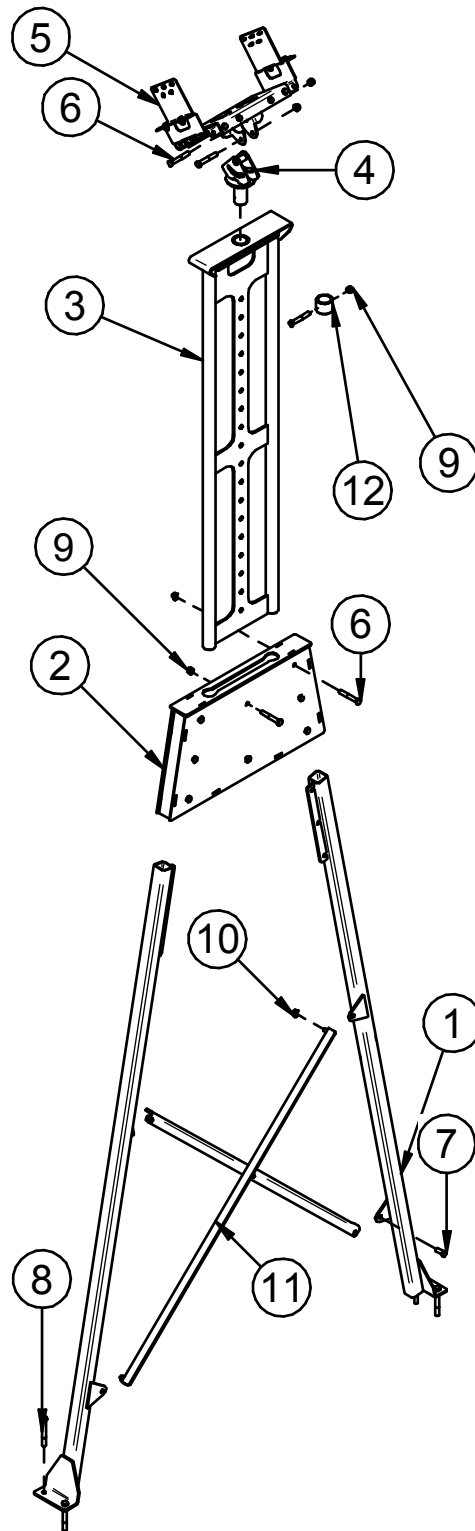
SEED SERIES 16 CONVEYOR

ASSEMBLY STAND S2 67—112 (05-05-0174 REV A0)



PART #		05-05-0174 REV A0		
Item #	Part #	Description	Qty	See Page
1	05-03-1828	WDMT LEG STND S2	2	
2	05-03-1832	WDMT LEG MNT STND	1	
3	05-03-1833	WDMT SLIDE STAND SHORT	1	
4	05-03-1841	WDMT STAND PIVOT	1	
5	05-05-0178	ASSY HD STND ADJ	1	
6	06-01-0029	BOLT .500-13 X 3.25 ZP GR5	11	
7	06-01-0086	BOLT .500-13 CONC ANCHOR ZP 4.25	4	
8	06-03-0004	NUT NYL LOCK .500-13 ZP GR5	5	
9	06-03-0015	NUT LOCK FLG .500-13 ZP GR5	6	
10	106582	BUSHING RETAINER	1	

ASSEMBLY STAND S3 109—153 (05-05-0175 REV A0)

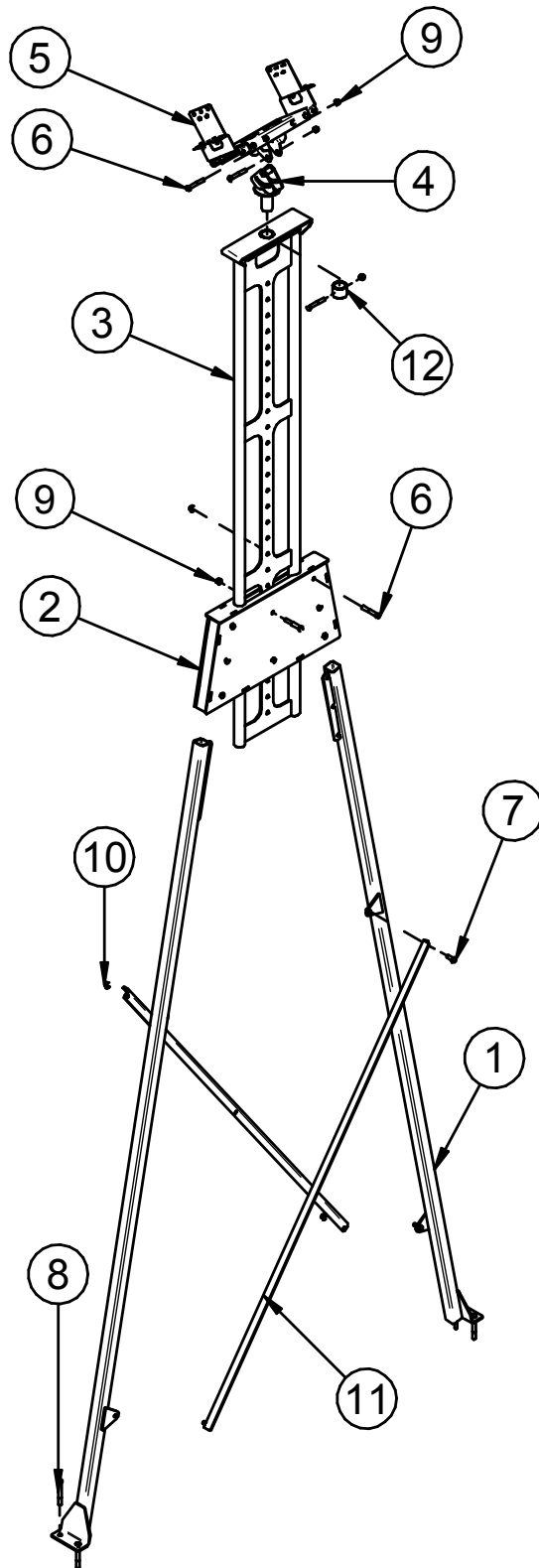


SEED SERIES 16 CONVEYOR

ASSEMBLY STAND S3 109—153 (05-05-0175 REV A0)

PART #		05-05-0175 REV A0		
Item #	Part #	Description	Qty	See Page
1	05-03-1829	WDMT LEG STND S3	2	
2	05-03-1832	WDMT LEG MNT STND	1	
3	05-03-1834	WDMT SLIDE STAND MID	1	
4	05-03-1841	WDMT STAND PIVOT	1	
5	05-05-0178	ASSY HD STND ADJ	1	
6	06-01-0029	BOLT .500-13 X 3.25 ZP GR5	11	
7	06-01-0080	BOLT .500-13 X 1.25 ZP GR5	4	
8	06-01-0086	BOLT .500-13 CONC ANCHOR ZP 4.25	4	
9	06-03-0004	NUT NYL LOCK .500-13 ZP GR5	5	
10	06-03-0015	NUT LOCK FLG .500-13 ZP GR5	10	
11	103614	ANGLE CROSS BRACE	2	
12	106582	BUSHING RETAINER	1	

ASSEMBLY STAND S4 102—226 (05-05-0176 REV A0)

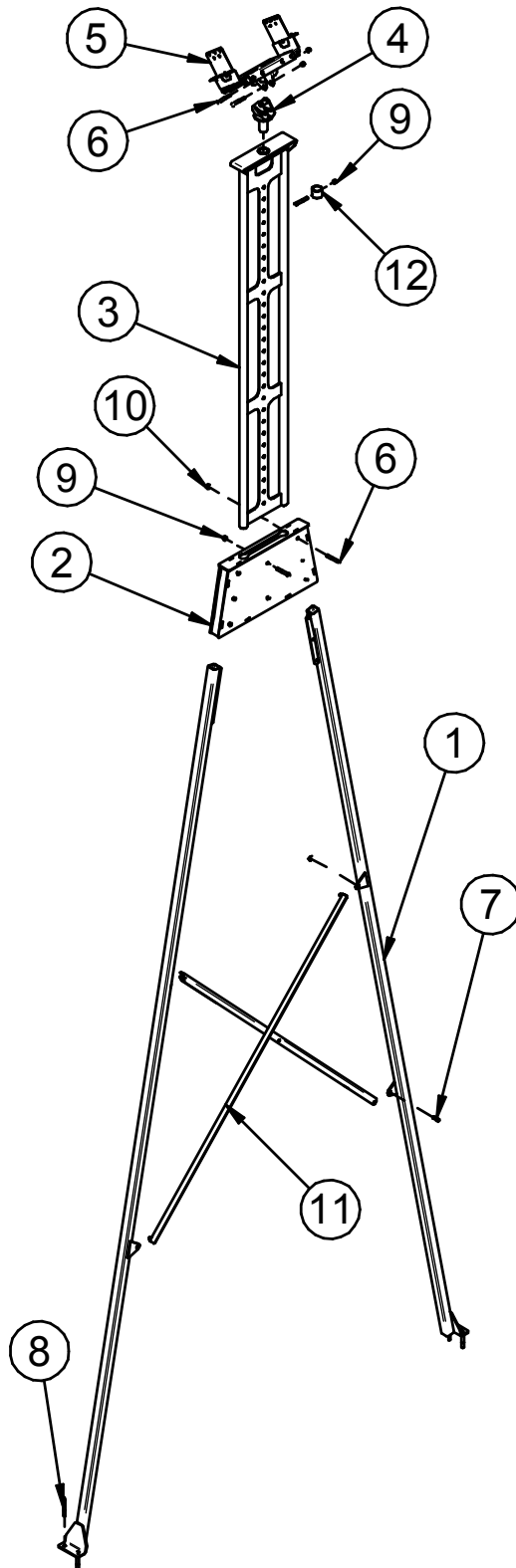


SEED SERIES 16 CONVEYOR

ASSEMBLY STAND S4 102—226 (05-05-0176 REV A0)

PART #		05-05-0176 REV A0		
Item #	Part #	Description	Qty	See Page
1	05-03-1830	WDMT LEG STND S4	2	
2	05-03-1832	WDMT LEG MNT STND	1	
3	05-03-1835	WDMT SLIDE STAND LONG	1	
4	05-03-1841	WDMT STAND PIVOT	1	
5	05-05-0178	ASSY HD STND ADJ	1	
6	06-01-0029	BOLT .500-13 X 3.25 ZP GR5	11	
7	06-01-0080	BOLT .500-13 X 1.25 ZP GR5	4	
8	06-01-0086	BOLT .500-13 CONC ANCHOR ZP 4.25	4	
9	06-03-0004	NUT NYL LOCK .500-13 ZP GR5	5	
10	06-03-0015	NUT LOCK FLG .500-13 ZP GR5	10	
11	10656A	ANGLE LEG BRACE	2	
12	106582	BUSHING RETAINER	1	

ASSEMBLY STAND S5 222—296 (05-05-0177 REV A0)

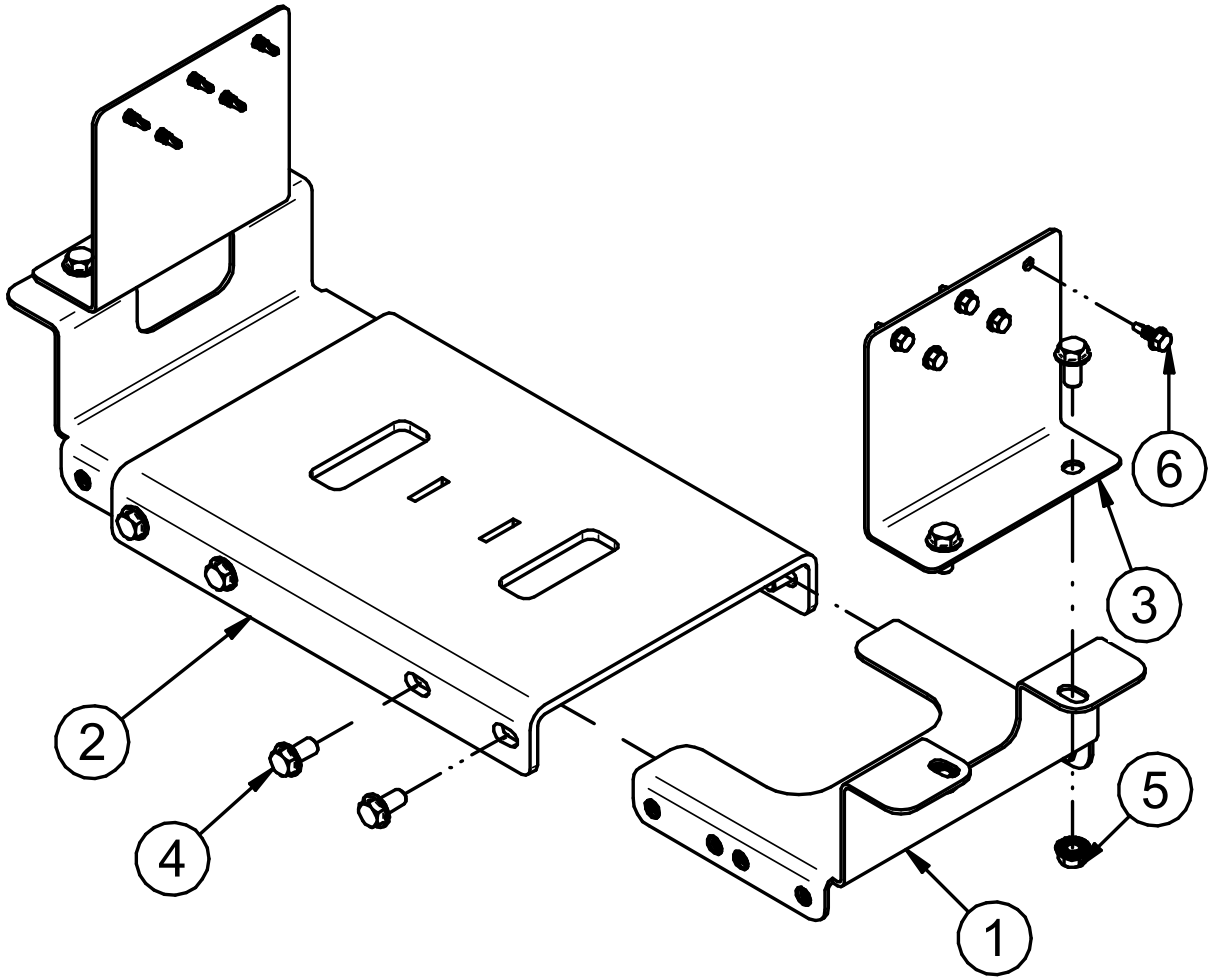


SEED SERIES 16 CONVEYOR

ASSEMBLY STAND S5 222—296 (05-05-0177 REV A0)

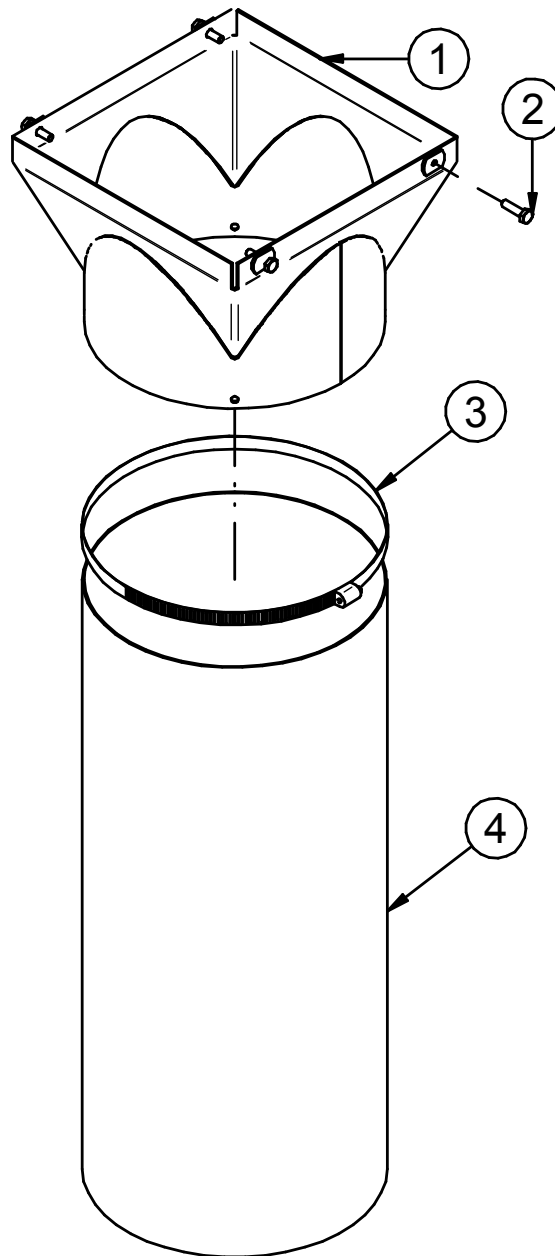
PART #		05-05-0177 REV A0		
Item #	Part #	Description	Qty	See Page
1	05-03-1831	WDMT LEG STND S5	2	
2	05-03-1832	WDMT LEG MNT STND	1	
3	05-03-1835	WDMT SLIDE STAND LONG	1	
4	05-03-1841	WDMT STAND PIVOT	1	
5	05-05-0178	ASSY HD STND ADJ	1	
6	06-01-0029	BOLT .500-13 X 3.25 ZP GR5	11	
7	06-01-0080	BOLT .500-13 X 1.25 ZP GR5	4	
8	06-01-0086	BOLT .500-13 CONC ANCHOR ZP 4.25	4	
9	06-03-0004	NUT NYL LOCK .500-13 ZP GR5	5	
10	06-03-0015	NUT LOCK FLG .500-13 ZP GR5	10	
11	10656A	ANGLE LEG BRACE	2	
12	106582	BUSHING RETAINER	1	

ASSEMBLY ADJUSTABLE HEAD (05-05-0178 REV A0)



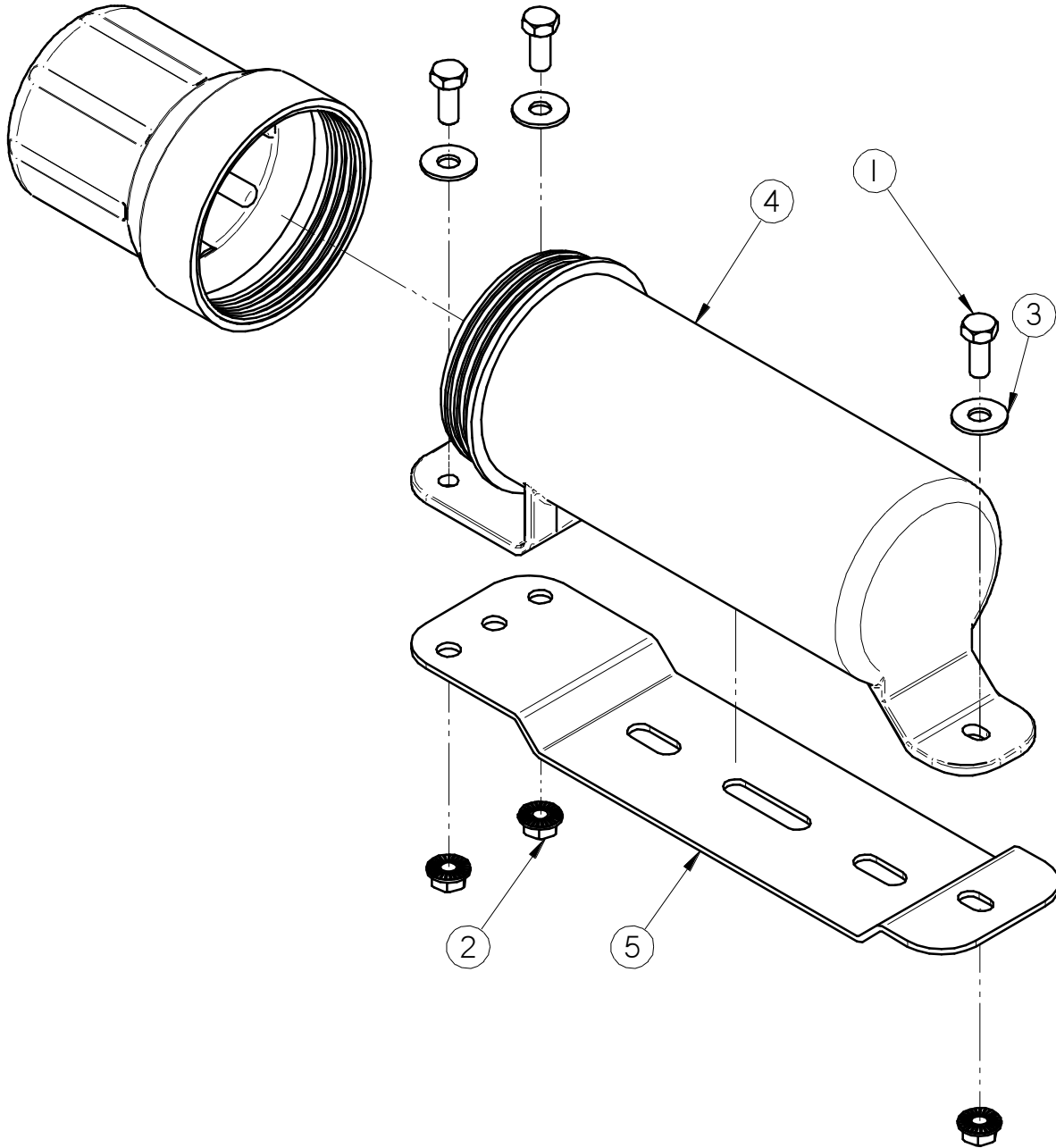
PART #		13-05-0178 REV A0		
Item #	Part #	Description	Qty	See Page
1	05-03-1838	WDMT ADJ HEAD	2	
2	05-03-1842	WDMT HEAD PLT	1	
3	05-10-3052	PLT CNVR SUPT TOP	2	
4	06-01-0124	BOLT FLG .375-16 X .750 ZP GR5	12	
5	06-03-0014	NUT LOCK FLG .375-16 ZP GR5	4	
6	06-06-0052	SCRW SDST .250-14 X .750 HH ZP	10	

ASSEMBLY 10 INCH FLEXIBLE SPOUT (13-05-0697 REV A0)



PART #		13-05-0697 REV A0		
Item #	Part #	Description	Qty	See Page
1	05-03-1567	WDMT CNVR SPOUT TS3500	1	
2	06-01-0007	BOLT .250-20 X 1.00 ZP GR5	4	
3	06-07-0027	CLMP HOSE 9.375 TO 12.25 X 9/16 SS	1	
4	103D92	CNVR DSCHG SPOUT EXT 10ID	1	

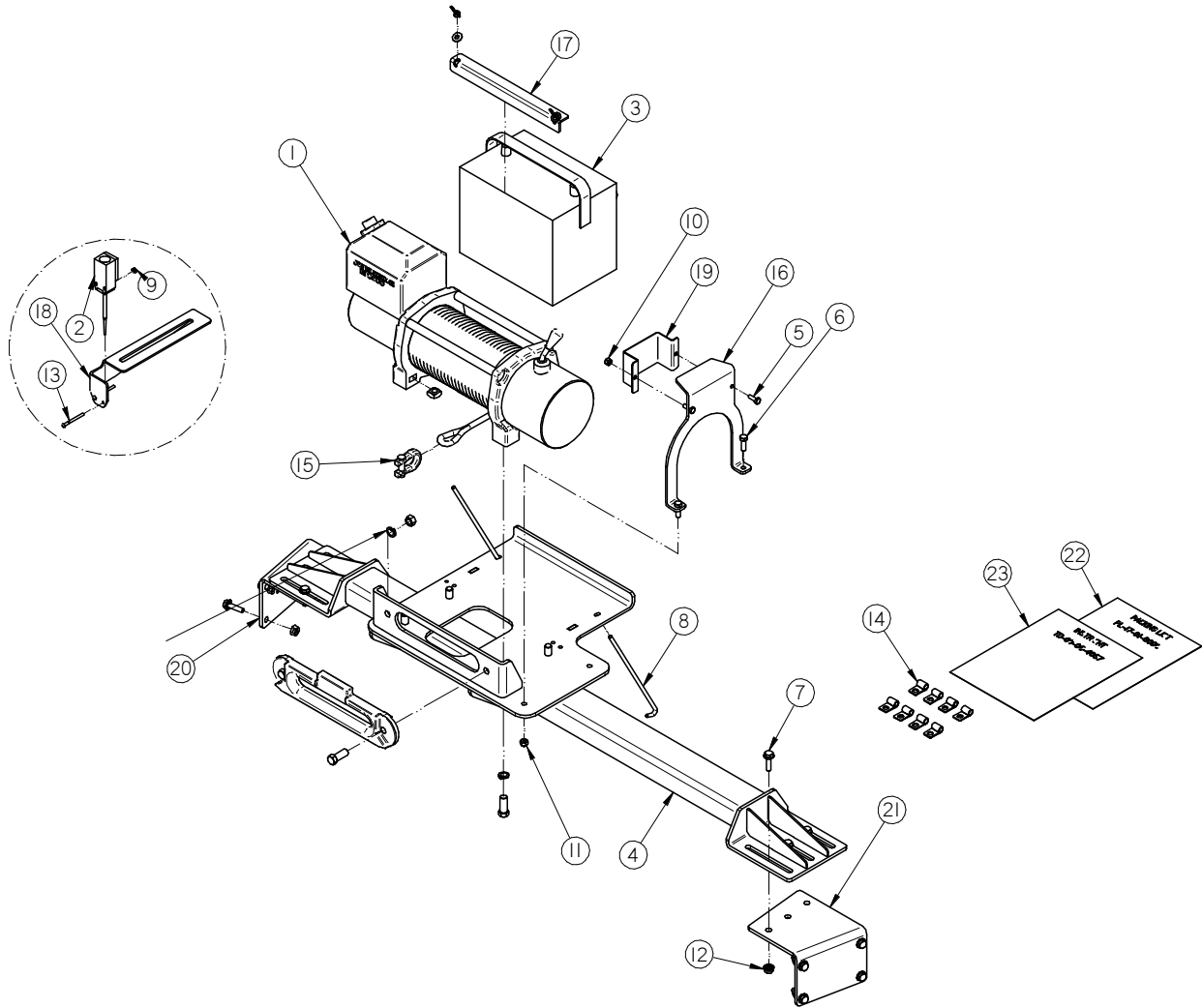
MANUAL TUBE ASSEMBLY (13-05-0332 REV A0)



PART #		13-05-0332 REV A0		
Item #	Part #	Description	Qty	See Page
1	06-01-0010	BOLT .313-18 X .750 ZP GR5	3	
2	06-03-0019	NUT LOCK FLG .313-18 ZP GR5	3	
3	06-05-0011	WSHR FLAT .313 X .875OD SS 18-8	3	
4	08-07-0050	HOLDER MANUAL 3.25 DIA	1	
5	103980	PLT MANUAL MOUNT	1	

SEED SERIES 16 CONVEYOR

KIT ELECTRIC WINCH (17-01-0006 REV A0)



SEED SERIES 16 CONVEYOR

KIT ELECTRIC WINCH (17-01-0006 REV A0)

PART #		17-01-0006 REV A1		
Item #	Part #	Description	Qty	See Page
1	01-01-0181	ELEC WINCH 8500LB WIRED FOR SWITCH	1	
2	03-10-0005	LIMIT SWITCH LS35P92B11	1	
3	03-14-0009	BTRY 12V	1	
4	05-08-0582	WDMT ELEC WINCH MNT	1	
5	06-01-0006	BOLT .250-20 X .750 ZP GR5	2	
6	06-01-0012	BOLT .313-18 X 1.00 ZP GR5	2	
7	06-01-0189	BOLT FLG .375-16 X 1.250 ZP GR5	14	
8	06-01-0285	BOLT J .250-20 X 10 (PKG OF 2)	1	
9	06-02-0034	NUT KLOCK 8-32 ZP	2	
10	06-03-0001	NUT NYL LOCK .250-20 ZP GR5	2	
11	06-03-0002	NUT NYL LOCK .313-18 ZP GR5	2	
12	06-03-0014	NUT LOCK FLG .375-16 ZP GR5	14	
13	06-06-0047	SCRW MACH 8-32 X 2.00 PHLP RDHD ZP	2	
14	06-07-0034	CLMP CABLE 3/8 DIA X 3/4 W	8	
15	06-09-0057	SHACKLE .375 DIA W SAFETY PIN	1	
16	10319C	PLT LEVER STOP	1	
17	10319D	ANGLE BATTERY HOLD-DOWN	1	
18	10319E	BRACKET LIMIT SWITCH MT	1	
19	1033F5	COVER ELEC WINCH	1	
20	104D5A	PLATE ELEC WINCH MNT LH	1	
21	104D5B	PLATE ELEC WINCH MNT RH	1	
22	PL-17-01-0006	PL FOR KIT ELEC WINCH CNVS 20-35	1	
23	TD-09-06-4057	INSTR SHT CNVR 20-35 ELEC WINCH KIT	1	

SEED SERIES 16 CONVEYOR

INDEX BY PART NUMBER

PART #	REVISION	DESCRIPTION (M2M)	PAGE #
		MOTOR CHART	25
05-05-0174	A0	ASSY STAND S2 67-112	48
05-05-0175	A0	ASSY STAND S3 109-153	49
05-05-0176	A0	ASSY STAND S4 152-226	51
05-05-0177	A0	ASSY STAND S5 222-296	53
05-05-0178	A0	ASSY HD STND ADJ	55
05-05-0179	A0	ASSY STAND S1 0-56	47
05-07-0641	A3	ASSY SS16 TAIL SECT HITCH	46
05-08-0340	B7	ASSY UNCG SS16 25FT	39
05-08-0341	B7	ASSY UNCG SS16 30FT	41
13-05-0210	A1	KIT DRV 5HP CNVR	23
13-05-0697	A0	ASSY 10"ID FLEX SPOUT	56
13-05-0332	A0	ASSY MANUAL TUBE MNT	57
13-08-0421	C6	ASSY INLET RND SS16	31
13-08-0424	C4	ASSY RIGID INLET HOPPER SS16	33
13-08-0425	D2	ASSY CLPSBL INLET HOPP SS16	34
13-08-0442	C3	ASSY SS16 INLET BLANK	37
13-08-0615	A1	ASSY 5FT MID SECT SS16	26
13-08-0616	A1	ASSY 10FT MID SECT SS16	27
13-08-0636	C3	ASSY RIGID INLET HOPP LG SS16	38
13-08-0645	A2	ASSY UPPER X-MEMBER CNVR	45
13-08-0667	A1	ASSY INLET CLEAN OUT SS16	28
13-08-0684	A1	ASSY PULLEY PIVOT CNVRS	43
13-08-0685	A2	ASSY PLY ANGLE PIVOT CNVRS	44
13-08-0746	A0	ASSY TRACKING PLT HD	22
13-08-0831	A1	ASSY INLET SECT SS16 LG BRG	29
13-08-0832	A2	ASSY HD SECT SS16 LG BRG	19
13-08-0835	A1	ASSY SS16 25FT BASE LG BRG	15
13-08-0836	A1	ASSY SS16 30FT BASE LG BRG	17
13-10-0012	A0	KIT INSTALL CNVR STAND 0 TO 56IN	47
17-01-0006	A0	KIT ELEC WINCH CNVRS 20-35	58

SEED SERIES 16 CONVEYOR

Notes:

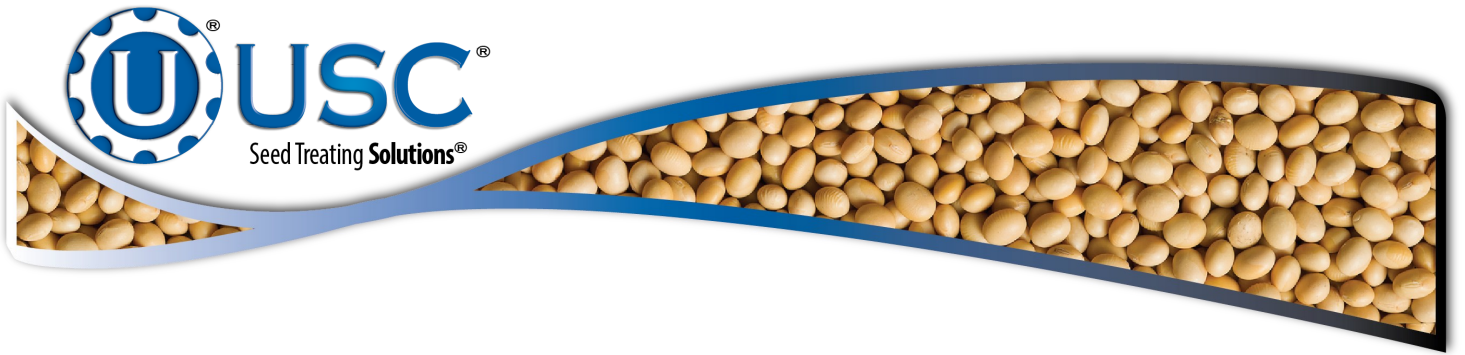
LIMITED WARRANTY

SECTION C

USC, LLC, (Manufacturer) warrants its seed treating equipment as follows:

- 1. Limited Warranty:** Manufacturer warrants that the Products sold hereunder will be free from defects in material and workmanship for a period of 18 months from date of shipment. If the Products do not conform to this Limited Warranty during the warranty period, Buyer shall notify Manufacturer in writing of the claimed defects and demonstrate to Manufacturer satisfaction that said defects are covered by this Limited Warranty. If the defects are properly reported to Manufacturer within the warranty period, and the defects are of such type and nature as to be covered by this warranty, Manufacturer shall, at its expense, furnish replacement Products or, at Manufacturer's option, replacement parts for the defective products. Shipping and installation of the replacement Products or replacement parts shall be at the Buyer's expense.
- 2. Other Limits:** THE FOREGOING IS IN LIEU OF ALL OTHER WARRANTIES, EXPRESSED OR IMPLIED, INCLUDING BUT NOT LIMITED TO THE IMPLIED WARRANTIES OF MERCHANTABILITY AND FITNESS FOR A PARTICULAR PURPOSE. Manufacturer does not warrant against damages or defects arising from improper installation (where installation is by persons other than Manufacturer), against defects in products or components not manufactured by Manufacturer, or against damages resulting from such non-Manufacturer made products or components. Manufacturer passes on to the Buyer the warranty it received (if any) from the maker of such non-Manufacturer made products or components. This warranty also does not apply to Products upon which repairs and / or modifications have been effected or attempted by persons other than pursuant to written authorization by Manufacturer. This includes any welding on equipment which could damage electrical components. Manufacturer does not warrant against casualties or damages resulting from misuse and / or abuse of Products, improper storage or handling, acts of nature, effects of weather, including effects of weather due to outside storage, accidents, or damages incurred during transportation by common carrier.
- 3. Exclusive Obligation:** THIS WARRANTY IS EXCLUSIVE. The sole and exclusive obligation of Manufacturer shall be to repair or replace the defective Products in the manner and for the period provided above. Manufacturer shall not have any other obligation with respect to the Products or any part thereof, whether based on contract, tort, strict liability or otherwise. Under no circumstances, whether based on this Limited Warranty or otherwise, shall Manufacturer be liable for lost profits, lost revenue, lost sales (whether direct or indirect damages), incidental, special, punitive, indirect or consequential damages.
- 4. Other Statements:** Manufacturer's employees or representatives' oral or other written statements do not constitute warranties, shall not be relied upon by Buyer, and are not a part of the contract for sale or this limited warranty.
- 5. Return Policy:** Approval is required prior to returning goods to Manufacturer. A restocking fee will apply.
- 6. Entire Obligation:** This Limited Warranty states the entire obligation of Manufacturer with respect to the Products. If any part of this Limited Warranty is determined to be void or illegal, the remainder shall remain in full force and effect.

US / Canada Non-Exclusive 2016



DOCUMENT REVIEW RECORD	
DATE	BY
03-20	BT

USC, LLC

2320 124th road

Sabetha, KS 66534

EMAIL: sales-team@uscllc.com

WEB: www.uscllc.com

