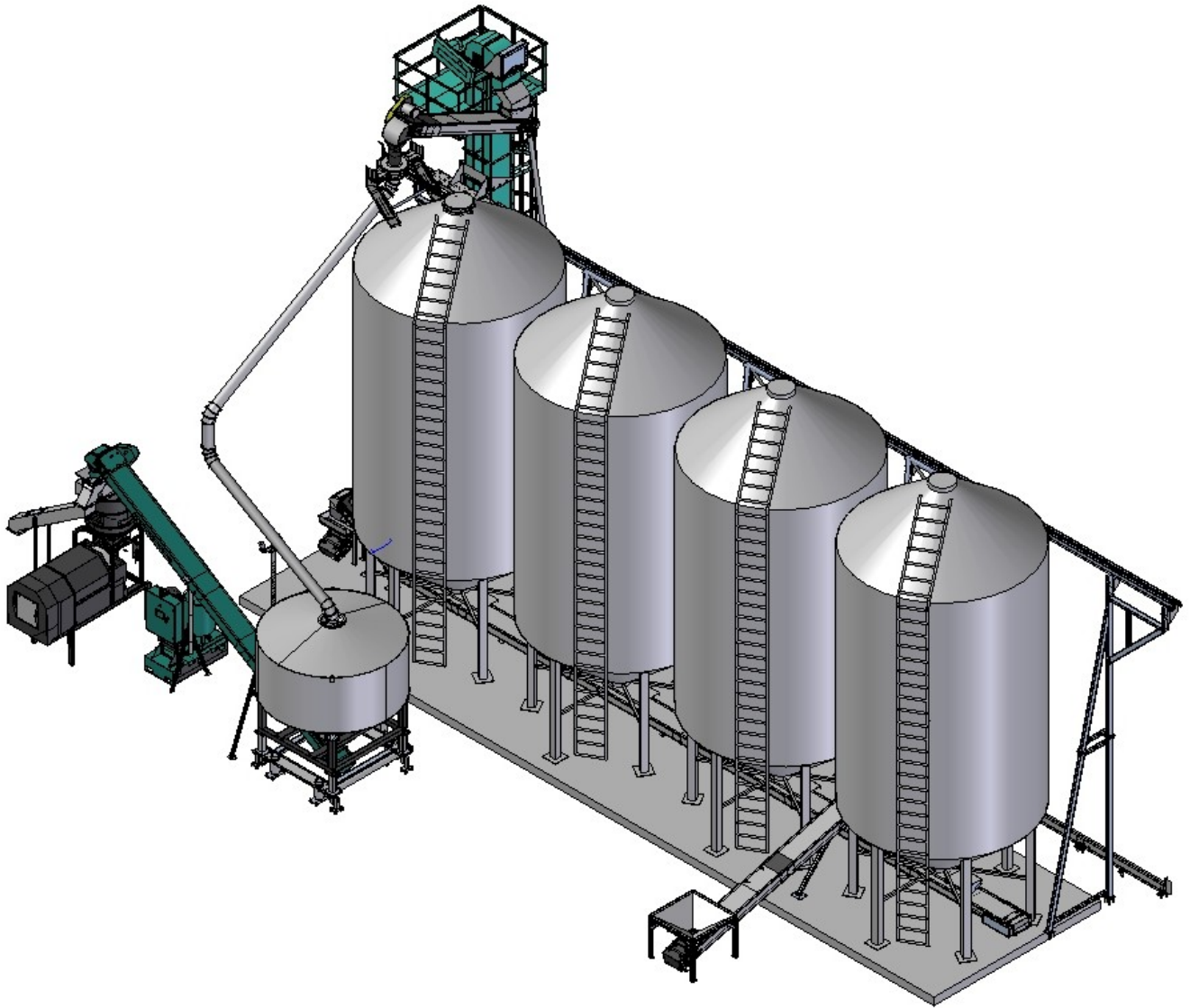


BIN SITE ACCESSORIES



Document: TD-09-06-1046

Revision: A



INTRODUCTION

Thank you for choosing USC, LLC for your equipment needs. We appreciate your business and will work diligently to ensure that you are satisfied with your choice.

OVERVIEW

The purpose of this manual is to provide you with the basic information needed to operate and maintain the bin site accessories. It does not hold USC, LLC liable for any accidents or injuries that may occur.

The technical information provided in this document is based on extensive testing under controlled conditions at the USC research and development facility. This information is given without guarantee as the conditions of operation and storage of the equipment are beyond our control. Variables such as temperature, humidity, viscosity of chemical products and changes in seed size or variety may all effect the accuracy of application and seed coverage. Periodically check the equipment calibration while treating and make adjustments as required. This will insure the optimum seed coverage.

OPERATOR RESPONSIBILITIES

As the purchaser/owner/operator of this equipment and control system, you have an obligation to install, operate, and maintain the equipment in a manner that minimizes the exposure of people in your care to any potential hazards inherent in using this equipment. It is critical that the owner of this equipment:

- Has a clear and documented understanding of the process this machine is being used in and of any resulting hazards or special requirements arising from this specific application.
- Allow only properly trained and instructed personnel to install, operate or service this equipment.
- Maintain a comprehensive safety program involving all who work with this machine and other associated process equipment.
- Establish clear areas of staff responsibility (e.g. operation, setup, sanitation, maintenance, and repairs).
- Provide all personnel with necessary safety equipment.
- Periodically inspect the equipment to insure that the doors, covers, guards, and safety devices are in place and functioning, that all safety instructions and warning labels are intact and legible, and that the equipment is in good working order.
- In addition to the operating instructions, observe and enforce the applicable legal and other binding regulations, national and local codes.

BIN SITE ACCESSORIES

As the person with the most to gain or lose from working safely, it is important that you work responsibly and stay alert. By following a few simple rules, you can prevent an accident that could injure or kill you or a co-worker.

- Disconnect, lockout, and tagout electrical and all other energy sources before inspecting, cleaning, servicing, repairing, or any other activity that would expose you to the hazards of electrical shock.
- Do not operate, clean, or service this equipment until you have read and understood the contents of this manual. If you do not understand the information in this manual, bring it to the attention of your supervisor, or call USC at (785) 431-7900 for assistance.
- Any operator who is known or suspected to be under the influence of alcohol or drugs should not be allowed to operate the equipment.
- Understand and follow the safety practices required by your employer and this manual.
- **PAY ATTENTION** to what you and other personnel are doing and how these activities may affect your safety.
- **Failure to follow these instructions may result in serious personal injury or death.**

RECEIVING YOUR EQUIPMENT

As soon as the equipment is received, it should be carefully inspected to make certain that it has sustained no damage during shipment and that all items listed on the packing list are accounted for. If there is any damage or shortages, the purchaser must immediately notify USC, LLC. Ownership passes to purchaser when the unit leaves the USC, LLC. premises. The purchaser is responsible for unloading and mounting all components of the equipment.

Document the serial number of the machine for future reference.

SERIAL NUMBER: _____



TABLE OF CONTENTS

<u>Section</u>	<u>Contents</u>	<u>Page #</u>
Section A	Safety Instructions.....	5
Section B	Troubleshooting.....	11
Section C	Maintenance	12
Section D	Storage.....	13
Section E	Mechanical Drawings	14
	Conveyors	14
	Diverters.....	18
	Box Hoppers	34
	Bin Slide Gates	40
Section F	Limited Warranty.....	59

SAFETY INSTRUCTIONS

SECTION A

Every year accidents in the work place maim, kill and injure people. Although it may be impossible to prevent all accidents, with the right combination of training, operating practices, safety devices, and operator vigilance, the number of accidents can be significantly reduced. The purpose of this section is to educate equipment users about hazards, unsafe practices, and recommended hazard avoidance techniques.

SAFETY WORDS AND SYMBOLS

It is very important that operators and maintenance personnel understand the words and symbols that are used to communicate safety information. Safety words, their meaning and format, have been standardized for U.S. manufacturers and published by the American National Standards Institute (ANSI). The European Community (E.C.) has adopted a different format based on the International Standards Organization (I.S.O.) and applicable machinery directives. Both formats are presented below. Graphic symbols are not standardized, but most manufacturers will use some variation of the ones seen in this manual.



Indicates an imminently hazardous situation which, if not avoided, **will** result in death or serious injury.



Indicates a potentially hazardous situation which, if not avoided, **could** result in death or serious injury.



Indicates a potentially hazardous situation which, if not avoided, **may** result in minor or moderate injury and/or property damage.



Provides additional information that the operator needs to be aware of to avoid a potentially hazardous situation.



Notice is used to notify people of important installation, operation or maintenance information which is not hazard related.



International Safety Alert Symbol. The exclamation point (!) surrounded by a yellow triangle indicates that an injury hazard exists. However, it does not indicate the seriousness of potential injury. The exclamation point (!) is also used with the DANGER, WARNING and CAUTION symbols so the potential injury is indicated.

BIN SITE ACCESSORIES

YOU are responsible for the **SAFE** operation and maintenance of your USC, LLC equipment . **YOU** must ensure that you and anyone else who is going to operate, maintain or work around the equipment be familiar with the operating and maintenance procedures and related **SAFETY** information contained in this manual. This manual will take you step-by-step through your working day and alert you to good safety practices that should be adhered to while operating the equipment

Remember, **YOU** are the key to safety. Good safety practices not only protect you, but also the people around you. Make these practices a working part of your safety program. Be certain that **EVERYONE** operating this equipment is familiar with the recommended operating and maintenance procedures and follows all the safety precautions. Most accidents can be prevented. Do not risk injury or death by ignoring good safety practices.

- Equipment owners must give operating instructions to operators or employees before allowing them to operate the machine, and at least annually thereafter per OSHA (Occupational Safety and Health Administration) regulation 1928.57.
- The most important safety device on this equipment is a **SAFE** operator. It is the operator's responsibility to read and understand **ALL** Safety and Operating instructions in the manual and to follow them. All accidents can be avoided.
- A person who has not read and understood all operating and safety instructions is not qualified to operate the machine. An untrained operator exposes himself and bystanders to possible serious injury or death.
- Do not modify the equipment in any way. Unauthorized modification may impair the function and/or safety and could affect the life of the equipment.
- Think SAFETY! Work SAFELY!

GENERAL SAFETY

1. Read and understand the operator's manual and all safety labels before operating, maintaining, adjusting or unplugging the equipment .
2. Only trained persons shall operate the equipment . An untrained operator is not qualified to operate the machine.
3. Have a first-aid kit available for use should the need arise, and know how to use it.



BIN SITE ACCESSORIES

4. Provide a fire extinguisher for use in case of an accident. Store in a highly visible place.
5. Do not allow children, spectators or bystanders within hazard area of machine.
6. Wear appropriate protective gear. This includes but is not limited to:
 - A hard hat
 - Protective shoes with slip resistant soles
 - Protective goggles
 - Heavy gloves
 - Hearing protection
 - Respirator or filter mask
7. Place all controls in neutral or off, stop motor, and wait for all moving parts to stop. Then disable power source before servicing, adjusting, repairing, or unplugging.
8. Review safety related items annually with all personnel who will be operating or maintaining the equipment.



OPERATING SAFETY:

1. Read and understand the operator's manual and all safety labels before using.
2. Disconnect and disable electrical supply completely and wait for all moving parts to stop before servicing, adjusting, repairing or unplugging.
3. Clear the area of bystanders, especially children, before starting.
4. Be familiar with the machine hazard area. If anyone enters hazard area, shut down machine immediately. Clear the area before restarting.
5. Keep hands, feet, hair and clothing away from all moving and/or rotating parts.
6. Stay away from overhead obstructions and power lines during operation and transporting. Electrocutation can occur without direct contact.
7. Do not operate machine when any guards are removed.
8. Inspect welds and repair if needed.

PLACEMENT SAFETY

1. Move only with the appropriate equipment
2. Stay away from overhead power lines when moving equipment. Electrocutation can occur without direct contact.
3. Be familiar with machine hazard area. If anyone enters hazard areas, shut down machine immediately. Clear the area before restarting.
4. Operate the equipment on level ground free of debris. Anchor the equipment to prevent tipping or upending.



Before placement of the equipment, be sure that ground is reasonably level. The equipment may topple or work improperly if the ground is too uneven, damaging the equipment and/or causing personal injury.

MAINTENANCE SAFETY

1. Review the operator's manual and all safety items before working with, maintaining or operating the equipment.
2. Place all controls in neutral or off, stop motors, disable power source, and wait for all moving parts to stop before servicing, adjusting, repairing or unplugging.
3. Follow good shop practices:
Keep service area clean and dry.
Be sure electrical outlets and tools are properly grounded.
Use adequate light for the job at hand.
4. Keep hands, feet, hair and clothing away from all moving and/or rotating parts.
5. Clear the area of bystanders, especially children, when carrying out any maintenance and repairs or making any adjustments.
6. Before resuming work, install and secure all guards when maintenance work is completed.
7. Keep safety labels clean. Replace any sign that is damaged or not clearly visible.



SAFETY LABELS

1. Keep safety labels clean and legible at all times.
2. Replace safety labels that are missing or have become illegible.
3. Replaced parts that displayed a safety label should also display the current label.
4. Replacement safety labels are available. Contact USC at (785) 431-7900 .

How to Install Safety Labels:

- Be sure that the installation area is clean and dry.
- Be sure temperature is above 50°F (10°C).
- Decide on the exact position before you remove the backing paper.
- Remove the smallest portion of the split backing paper.
- Align the sign over the specified area and carefully press the small portion with the exposed sticky backing in place.
- Slowly peel back the remaining paper and carefully smooth the remaining portion of the sign in place.
- Small air pockets can be pierced with a pin and smoothed out using the piece of sign backing paper.



Located on the USC equipment you will find safety labels. Always be sure to read and follow all directions on the labels.



Guards provided with USC equipment are to remain in place during operation.

BIN SITE ACCESSORIES

Think **SAFETY!** Work **SAFELY!**

REMEMBER—If safety labels have been damaged, removed, become illegible, or parts replaced without safety labels, new labels must be applied. New safety labels are available from USC at (785) 431-7900.



Part # 09-02-0012



Part # 09-02-0002



Part # 09-02-0001



Part # 09-02-0011



Part # 09-02-0009

TROUBLESHOOTING**SECTION
B****TROUBLESHOOTING**

Below is a table describing the most frequent problems and solutions with the USC seed hoppers . For further assistance, contact the USC Service department at (785) 431-7900.

Problem	Possible Cause	Solution
Air gate will not close fully.	<ol style="list-style-type: none"> 1. Something is obstructing the air gate from closing. 2. Air pressure to the gate is not strong enough. 	<ol style="list-style-type: none"> 1. Remove obstruction. 2. Ensure that the bin slide gate has at least 100 psi of air being supplied to it.
Air gate is opening when it should be closing and vice versa.	<ol style="list-style-type: none"> 1. Air lines to the air gate are reversed. 	<ol style="list-style-type: none"> 1. Switch the hoses to the front and the back of the air cylinder.
Diverter is leaking seed through bypass side while in TREAT mode of operation.	<ol style="list-style-type: none"> 1. Insufficient air pressure to actuate the diverter K-Valve. 2. An obstruction in the diverter is stopping correct placement of the diverter plate. 	<ol style="list-style-type: none"> 1. Ensure that at least 100 psi of air pressure is present at the diverter. 2. Remove obstruction.

**SECTION
C****MAINTENANCE**

Proper maintenance of the bin site accessories is critical for peak performance, reliability and accuracy. The following is a guideline for the type of maintenance and servicing that should be performed on this equipment. Your environment and uses may require additional maintenance and service beyond this list to assure a reliability and safety. The operator of this equipment has ultimate responsibility to identify areas of concern and rectify them before they become a hazard or safety issue. There is no substitute for a trained, alert operator.



Do not put this equipment into operation with any questionably maintained parts. Poor performance or a hazard may occur.

DIVERTER K-VALVE BEARING GREASE

Use an SAE multipurpose high temperature grease with extreme pressure (EP) performance. Also acceptable is an SAE multipurpose lithium-based grease.

Use a Maintenance Checklist to keep record of all scheduled maintenance.

- Use a hand-held grease gun for all greasing.
- Wipe grease fitting with a clean cloth before greasing to avoid injecting dirt and grit.
- Replace and repair broken fittings immediately.

NOTICE

If fittings will not take grease, remove and clean thoroughly. Also clean lubricant passageway. Replace fitting if necessary.

HOPPER

- Inspect all welds and structural components for bends, cracks, and damage.
- Clean out any build up of debris.

DIVERTER

- Inspect all welds and structural components for bends, cracks, and damage.
- Test diverter K-Valve for proper actuation with 3-Way valve.
- Clean diverter of any obstructions.
- Grease both K-Valve bearings.

When storing the seed hopper for long periods of time, the following procedure must be followed to reduce the chance of rust, corrosion and fatigue of the conveyor. You can also use these steps when storing the machine for the winter.



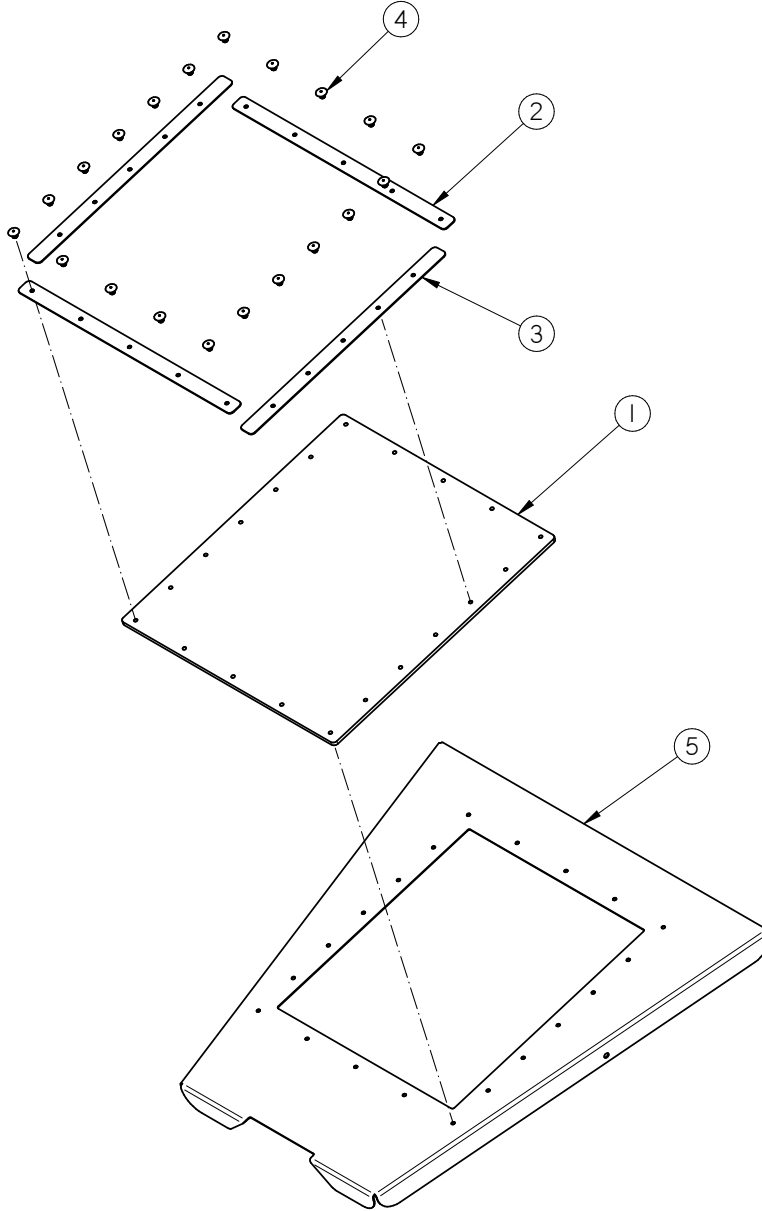
A dust mask and protective rubber gloves shall be used when cleaning the machine.

1. Clear the area of bystanders, especially small children.
2. Disconnect power to the machine.
3. Thoroughly wash the entire machine to remove all dirt, mud, debris or residue.
4. Lubricate all grease fittings. Make sure that all grease cavities have been filled with grease to remove any water residue from the washing. This also protects the bearing seals.
5. Lubricate the hopper vibrator as defined in the Maintenance Section.
6. Touch up all paint nicks and scratches to prevent rusting.
7. Store the machine inside a protective building to keep it from being exposed to the weather. Select an area that is dry, level and free of debris. If storing outside, cover with a waterproof tarpaulin.

SECTION
E

MECHANICAL DRAWINGS

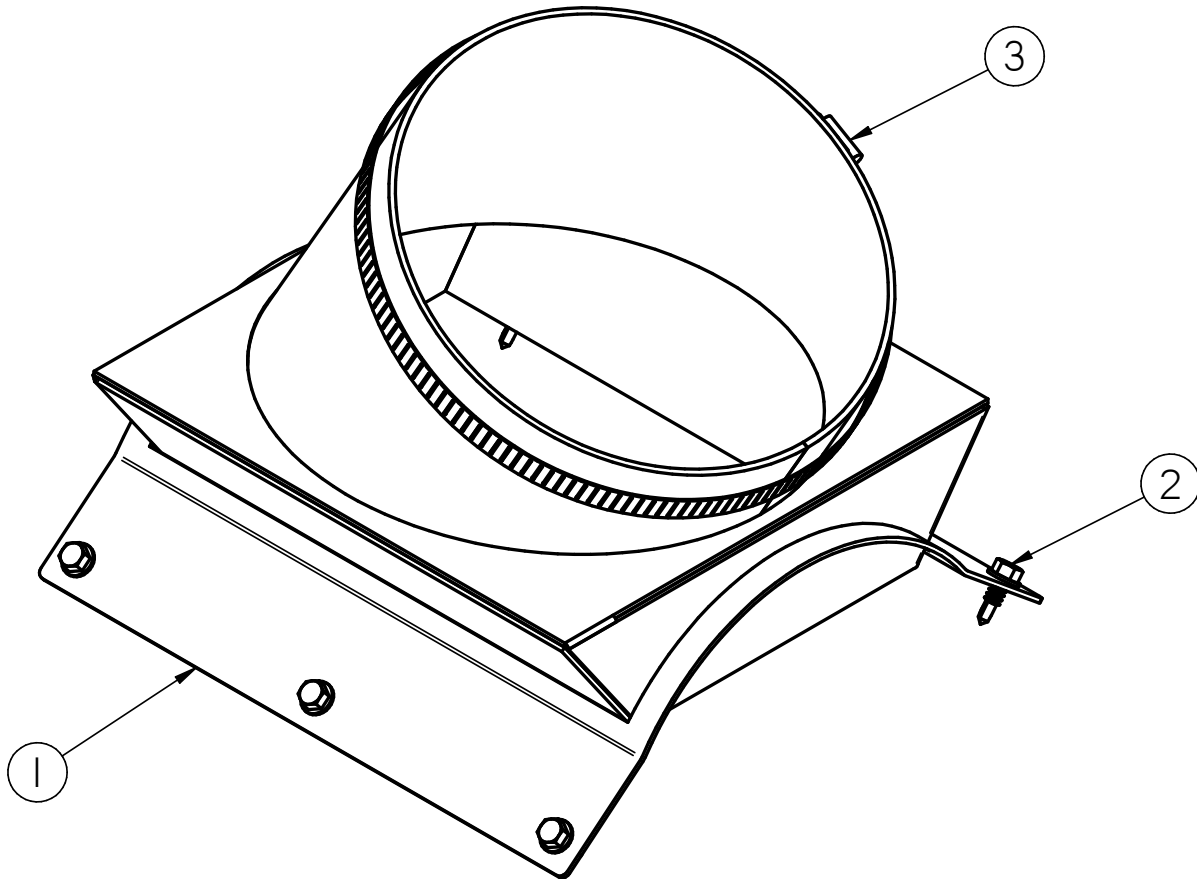
INLET COVER ASSEMBLY (05-07-0780)



Item #	Part #	Description	Qty
1	05-10-3433	PLT S2000 INLET HOPP SEAL	1
2	05-10-3434	PLT S2000 INLET HOPP CLMP 2	2
3	05-10-3435	PLT S2000 INLET HOPP CLMP 1	2
4	06-12-0022	RIVET POP .188 X .312 GRIP SS .65HD	20
5	103C35	PLT INLET HOPP COVER	1

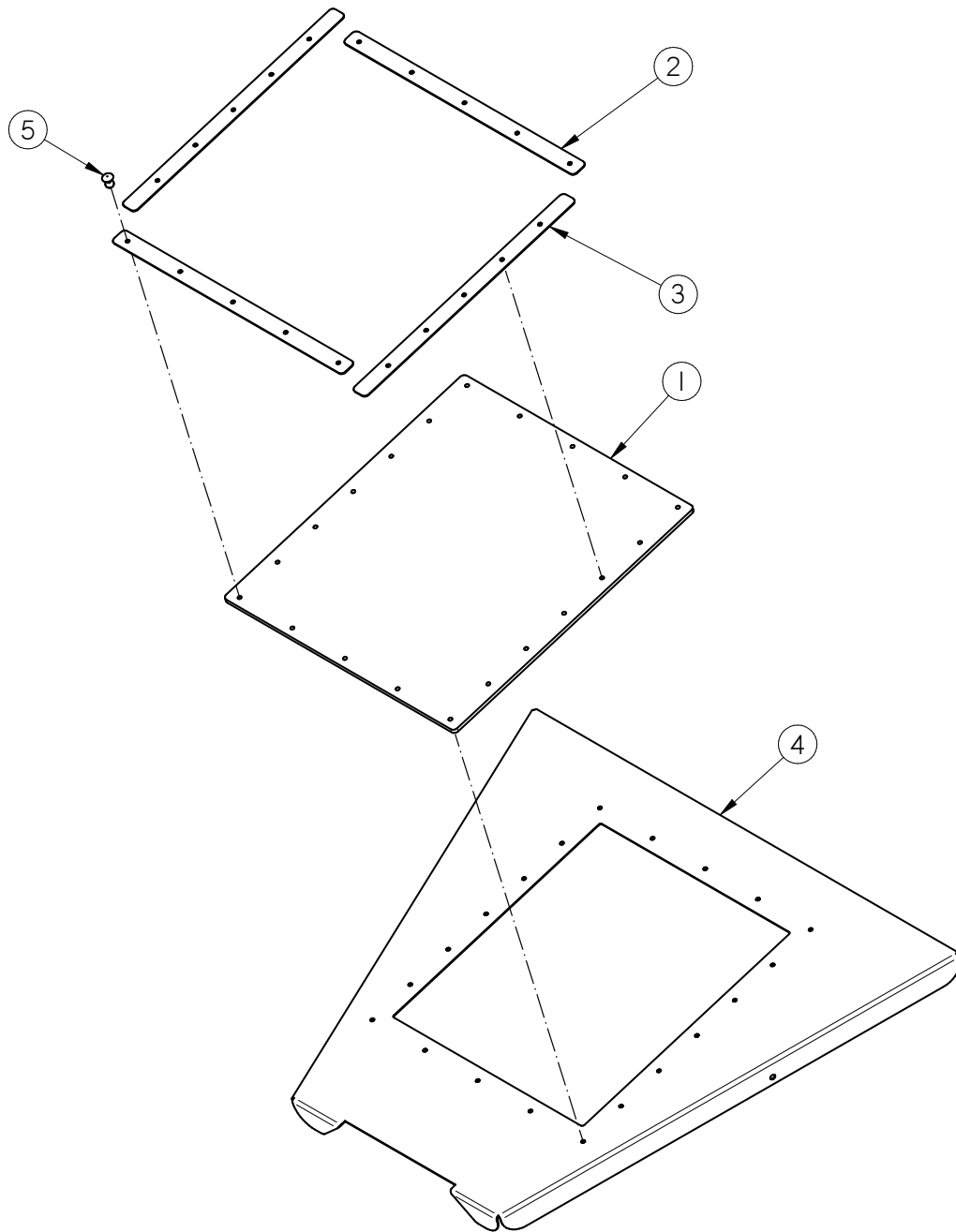
BIN SITE ACCESSORIES

INLET COVER 8 INCH OD 30 DEGREE ASSEMBLY (05-07-0781)



Item #	Part #	Description	Qty
1	05-03-1579	WDMT STUB INLET 8IN 30D	1
2	06-06-0052	SCRW SDST .250-14 X .750 HH ZP	6
3	06-07-0024	CLMP HOSE 7.125 TO 10 X 9/16 SS	1
4	06-10-0011	SLNT SILC CLEAR 10.1 OZ TUBE	0.1

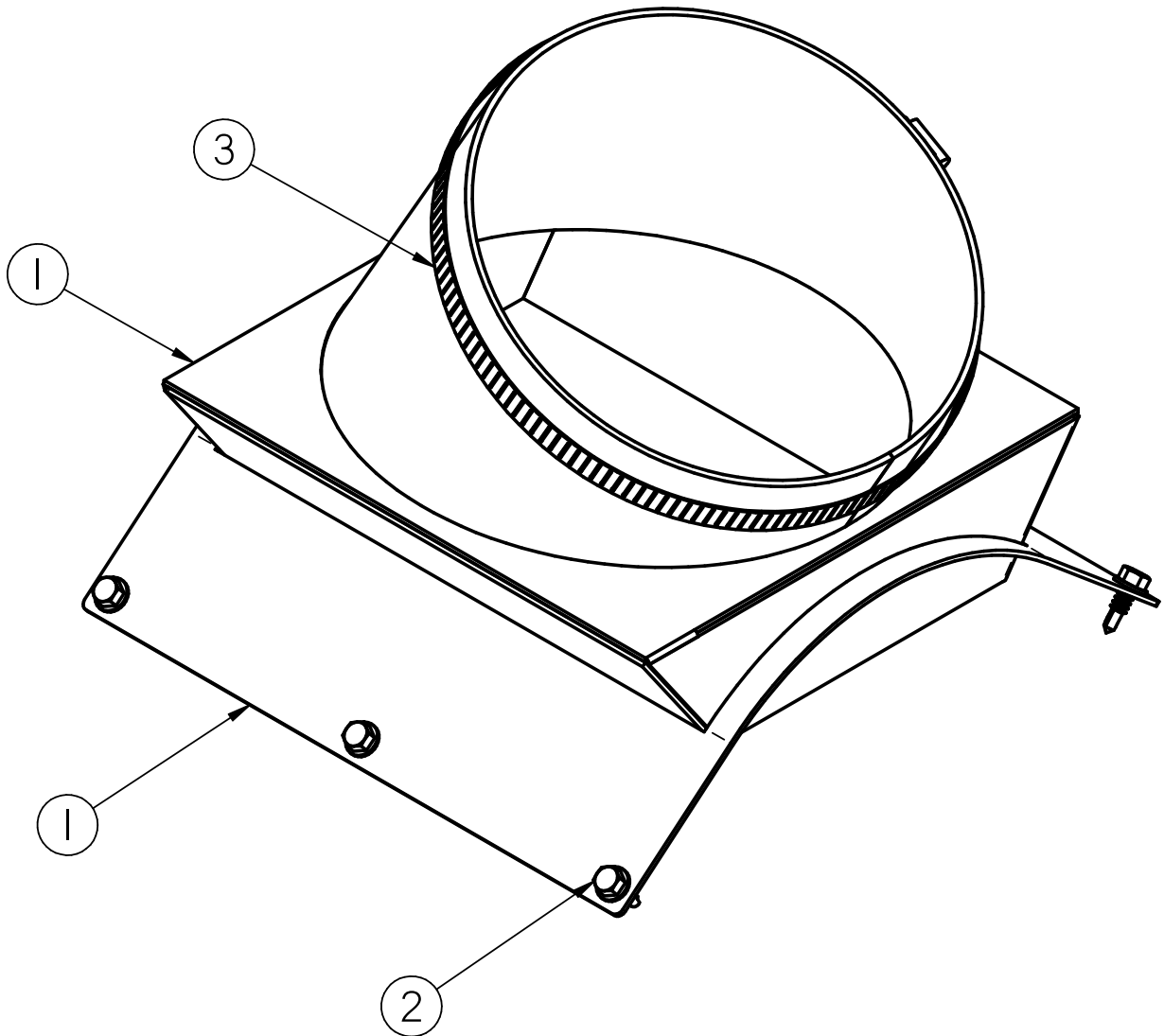
BIN SITE ACCESSORIES
INLET COVER ASSEMBLY (05-07-0782)



Item #	Part #	Description	Qty
1	05-10-3433	PLT S2000 INLET HOPP SEAL	1
2	05-10-3434	PLT S2000 INLET HOPP CLMP 2	2
3	05-10-3435	PLT S2000 INLET HOPP CLMP 1	2
4	05-10-4342	PLT S2000 INLET HOPP COVER	1
5	06-12-0022	RIVET POP .188 X .312 GRIP SS .65HD	20

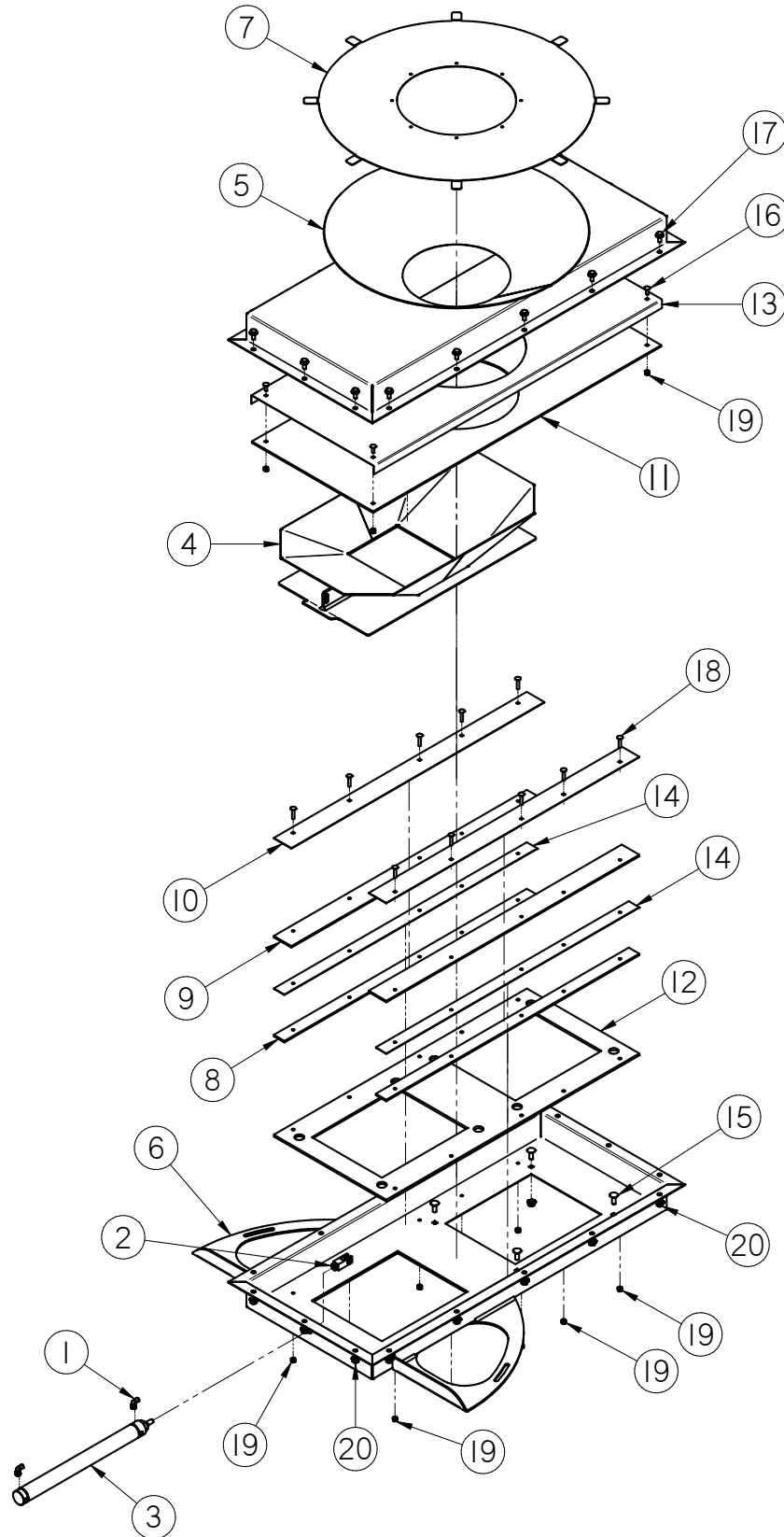
BIN SITE ACCESSORIES

INLET COVER 8 INCH OD 30 DEGREE ASSEMBLY (05-07-0783)



Item #	Part #	Description	Qty
1	05-03-1568	WDMT CNVR STUB INLET 8IN 30D TS3500	1
2	06-06-0052	SCRW SDST .250-14 X .750 HH ZP	6
3	06-07-0024	CLMP HOSE 7.125 TO 10 X 9/16 SS	1
4	06-10-0011	SLNT SILC CLEAR 10.1 OZ TUBE	0.1

DIVERTER SHUTTLE ASSEMBLY (05-07-0433)

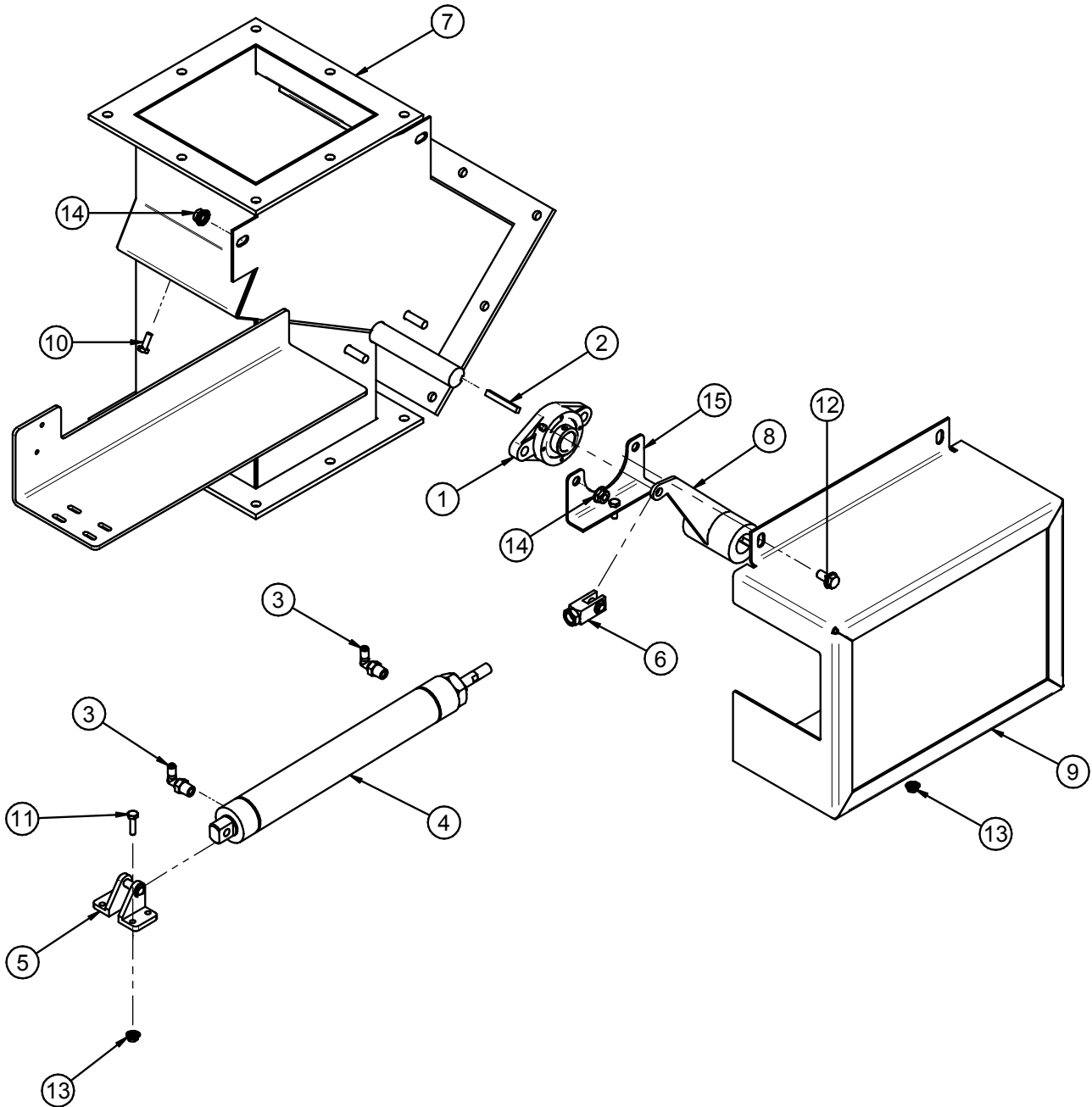


BIN SITE ACCESSORIES

DIVERTER SHUTTLE ASSEMBLY (05-07-0433)

Item #	Part #	Description	Qty
1	02-16-0046	FTTG PUSH 90 DEG .250 OD X .125 NPT	2
2	03-17-0046	CLEVIS ASSY BIMBA D-8311-A	1
3	03-17-0078	CYL AIR 14.3" STROKE 1.5IN BORE DBL	1
4	05-03-1020	WDMT DVTR SHUTTLE	1
5	05-03-1021	WDMT DVTR TOP	1
6	05-03-1022	WDMT DVTR BTTM	1
7	05-07-0601	ASSY DVTR INLET CVR	1
8	05-10-3914	SPCR GUIDE	2
9	05-10-3915	BRG UHMW SLGT	2
10	05-10-3916	PLT CLAMP SLGT	2
11	05-10-3917	PLT SEAL DVTR TOP	1
12	05-10-3918	PLT SEAL DVRT BTTM	1
13	05-10-3948	PLT SEAL DVTR	1
14	05-10-4190	SPCR GUIDE SPCR	2
15	06-01-0115	BOLT CRG .375-16 X 1.00 ZP GR5	4
16	06-01-0122	BOLT, CARRIAGE, .250-20x.75 G5 ZP	4
17	06-01-0124	BOLT FLG .375-16 X .750 ZP GR5	16
18	06-01-0159	BOLT CRG .25-20 X 1.25 ZP GR5	10
19	06-03-0001	NUT,LOCK, .250-20 ZP G5 NYLON INSERT	14
20	06-03-0014	NUT LOCK FLG .375-16 ZP GR5	20

BIN SITE ACCESSORIES
DIVERTER Y-VALVE ASSEMBLY (13-05-0166)

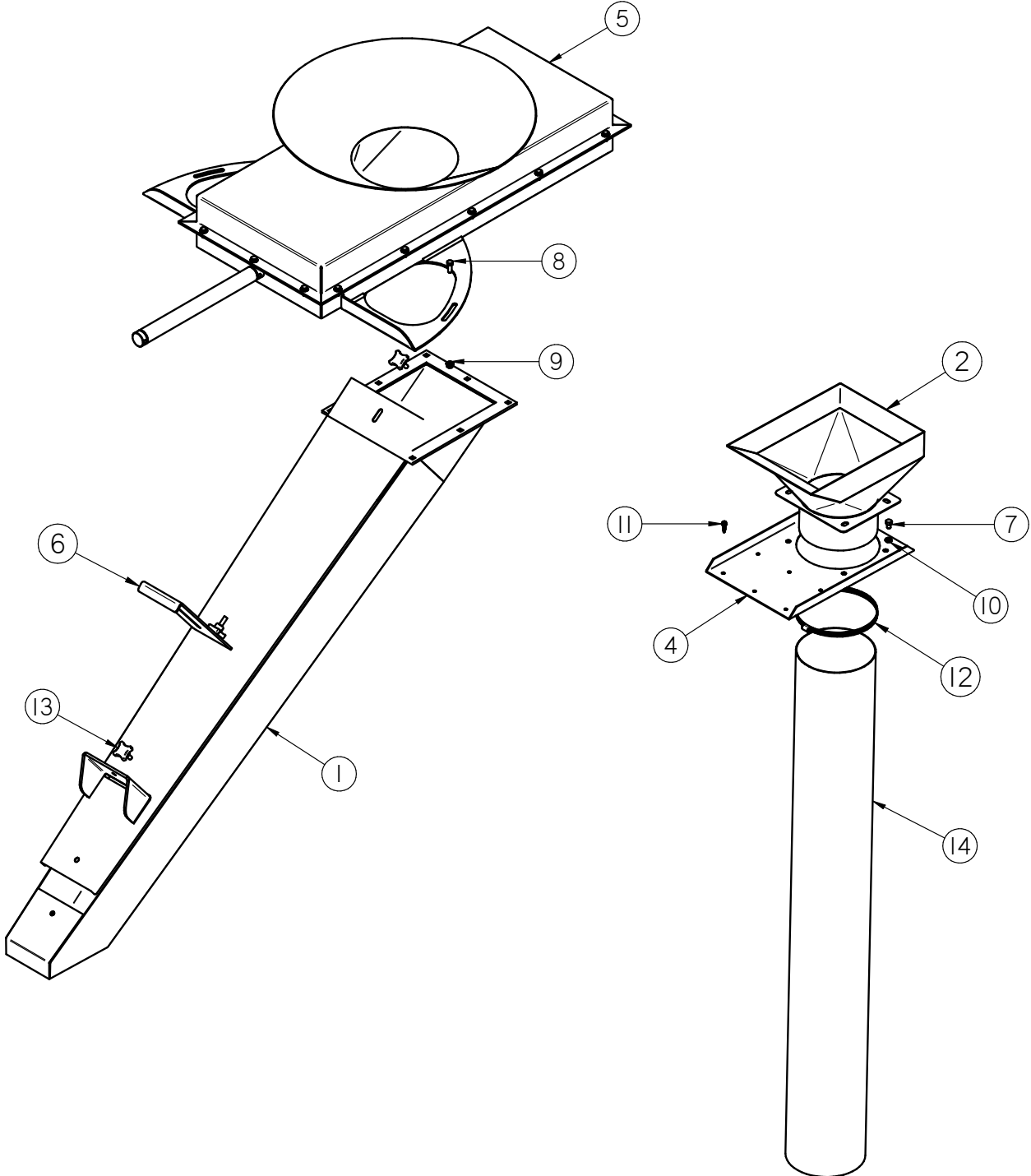


BIN SITE ACCESSORIES

DIVERTER Y-VALVE ASSEMBLY (13-05-0166)

Item #	Part #	Description	Qty
1	01-03-0003	BRG FLG MNT 1.000ID 2BOLT	
2	01-10-0003	KEY .250 X 2.00 CS	
3	02-16-0044	FTTG PUSH 90 DEG .250OD X .250 NPT	
4	03-17-0005	AIR CYLINDER, DOUBLE ACTION M-2410-DP	
5	03-17-0006	BIMBA PIVOT BRKT W PIN D-620-1	
6	03-17-0007	CLEVIS 1/2-20 D-231-3	
7	05-03-0642	WDMT SPOUT BY-PASS VLV HSG	
8	05-03-0643	WDMT,FLAPPER VALVE PIVOT	
9	05-06-0065	WDMT GRD TRTR BY-PASS VLV	
10	06-01-0006	BOLT, .250-20 X .75 UNC ZP GRADE 5	
11	06-01-0007	BOLT, .250-20 X 1 UNC ZP GRADE 5	
12	06-01-0124	BOLT FLG .375-16 X .750 ZP GR5	
13	06-03-0013	NUT,LOCK, FLG .250-20 ZP SERRATED	
14	06-03-0014	NUT LOCK FLG .375-16 ZP GR5	
15	2201-498	WDMT Y-VALVE GRD MNT CMRCL TWR	

CENTER DIVERTER - 800 Series Treaters (05-07-0513)

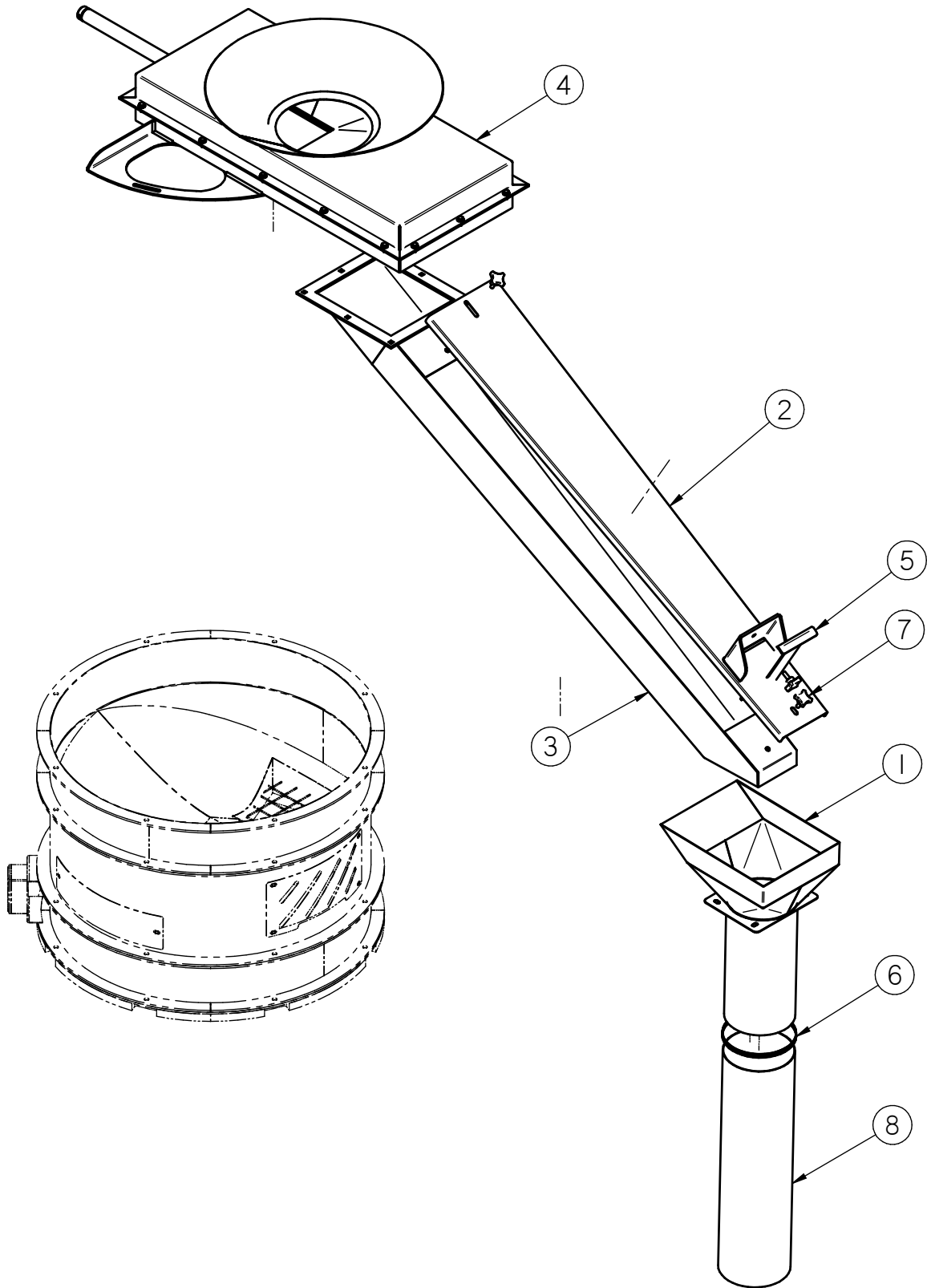


BIN SITE ACCESSORIES

CENTER DIVERTER - 800 Series Treaters (05-07-0513)

Item #	Part #	Description	Qty
1	05-03-0969	WDMT CTR DISCH CHUTE 2 LP800 SMW	1
2	05-03-0974	WDMT CTR DISCH CHUTE 1 LP800	1
3	05-03-0975	WDMT MNT BRKT DISCH CHUTE LP800 SMW	1
4	05-03-0976	WDMT MNT BRKT DISCH CHUTE LP800 SMW	1
5	05-07-0433	ASSY DVTR SHUTTLE	1
6	05-10-3799	PLT DVTR 10	1
7	06-01-0014	BOLT .375-16 X .500 ZP GR5	4
8	06-01-0016	BOLT .375-16 X 1.00 ZP GR5	2
9	06-03-0014	NUT LOCK FLG .375-16 ZP GR5	2
10	06-04-0003	WSHR LOCK SPLT .375 ZP	4
11	06-06-0037	SCRW SDST .250-14 X 1.000 HH ZP	6
12	06-07-0024	CLMP HOSE 7.125 TO 10 X 9/16 SS	1
13	06-09-0066	KNOB .375 -16 X 1. 4 LUG PLASTIC	3
14	101E2F	TUBE DISCH DVTR LP800	1

CENTER DIVERTER - 2000 Series Treaters - 6 Inch Ext (05-07-0476)

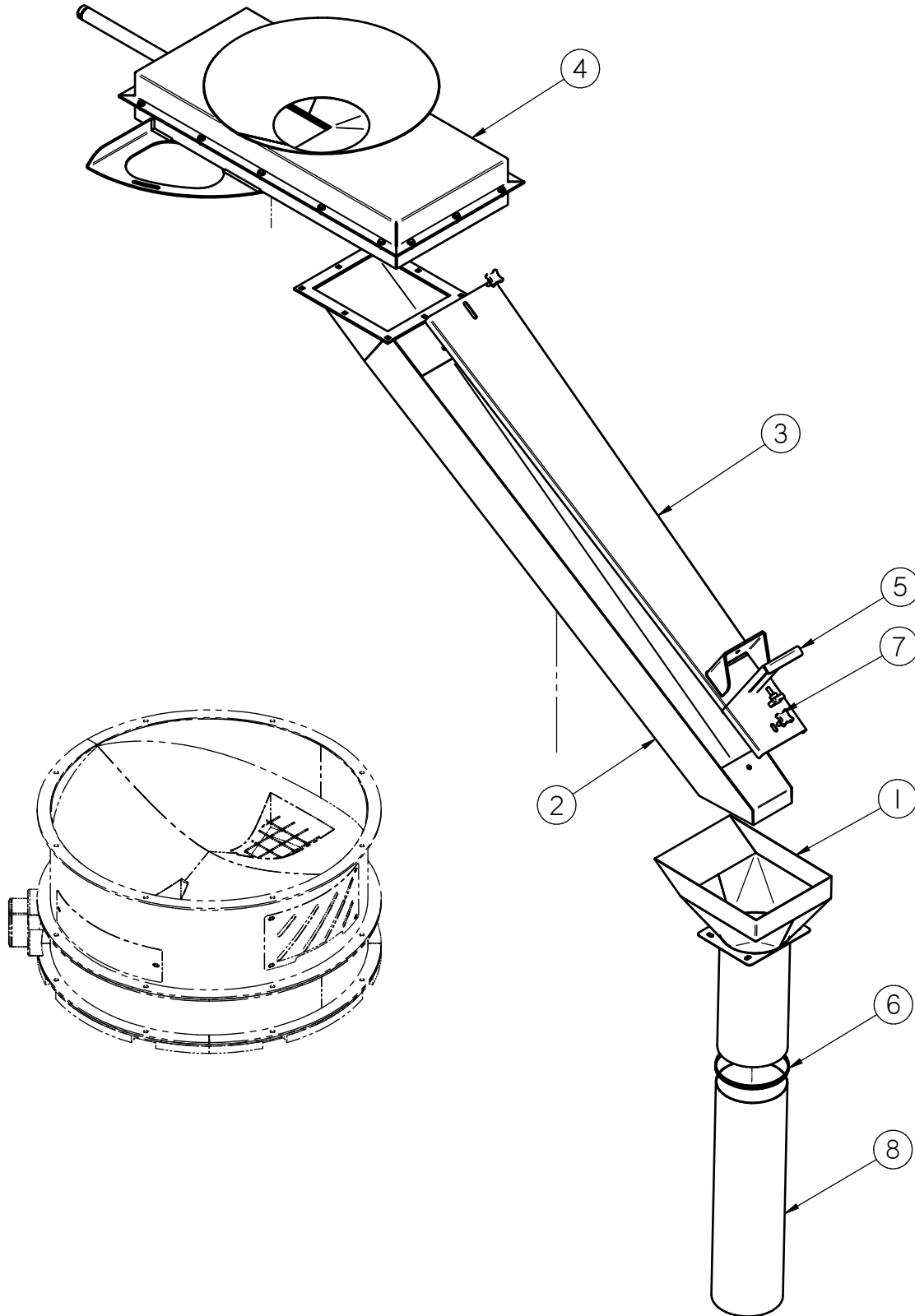


BIN SITE ACCESSORIES

CENTER DIVERTER - 2000 Series Treaters - 6 Inch Ext (05-07-0476)

Item #	Part #	Description	Qty
1	05-03-0937	WDMT CTR DISCH CHUTE 1	1
2	05-03-0939	WDMT CTR DISCH CHUTE CVR	1
3	05-03-1075	WDMT CTR DISCH CHUTE SMW 6IN EXT	1
4	05-07-0433	ASSY DVTR SHUTTLE	1
5	05-10-3799	PLT DVTR 10	1
6	06-07-0024	CLMP HOSE 7.125 TO 10 X 9/16 SS	1
7	06-09-0066	KNOB .375 -16 X 1. 4 LUG PLASTIC	3
8	1018CA	TUBE DISCH DVTR	1

SIDE DISCHARGE DIVERTER - 2000 Series Treaters - 12 Inch Ext (05-07-0479)

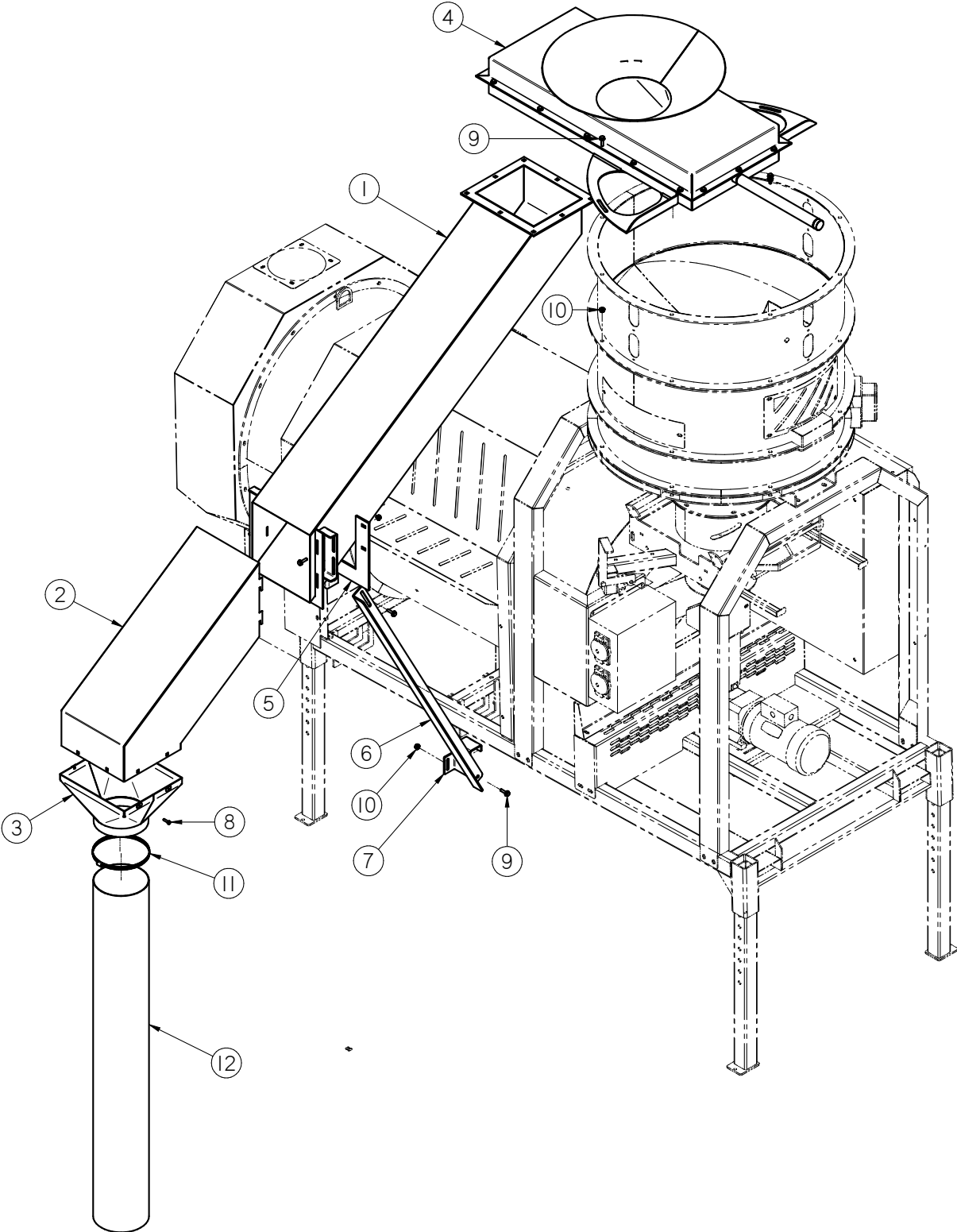


BIN SITE ACCESSORIES

CENTER DIVERTER - 2000 Series Treaters - 12 Inch Ext (05-07-0479)

Item #	Part #	Description	Qty
1	05-03-0937	WDMT CTR DISCH CHUTE 1	1
2	05-03-0938	WDMT CTR DISCH CHUTE 2	1
3	05-03-0939	WDMT CTR DISCH CHUTE CVR	1
4	05-07-0433	ASSY DVTR SHUTTLE	1
5	05-10-3799	PLT DVTR 10	1
6	06-07-0024	CLMP HOSE 7.125 TO 10 X 9/16 SS	1
7	06-09-0066	KNOB .375 -16 X 1. 4 LUG PLASTIC	3
8	1018CA	TUBE DISCH DVTR	1

SIDE DISCHARGE DIVERTER - Pro Box / Fill Conveyor (05-07-0493)

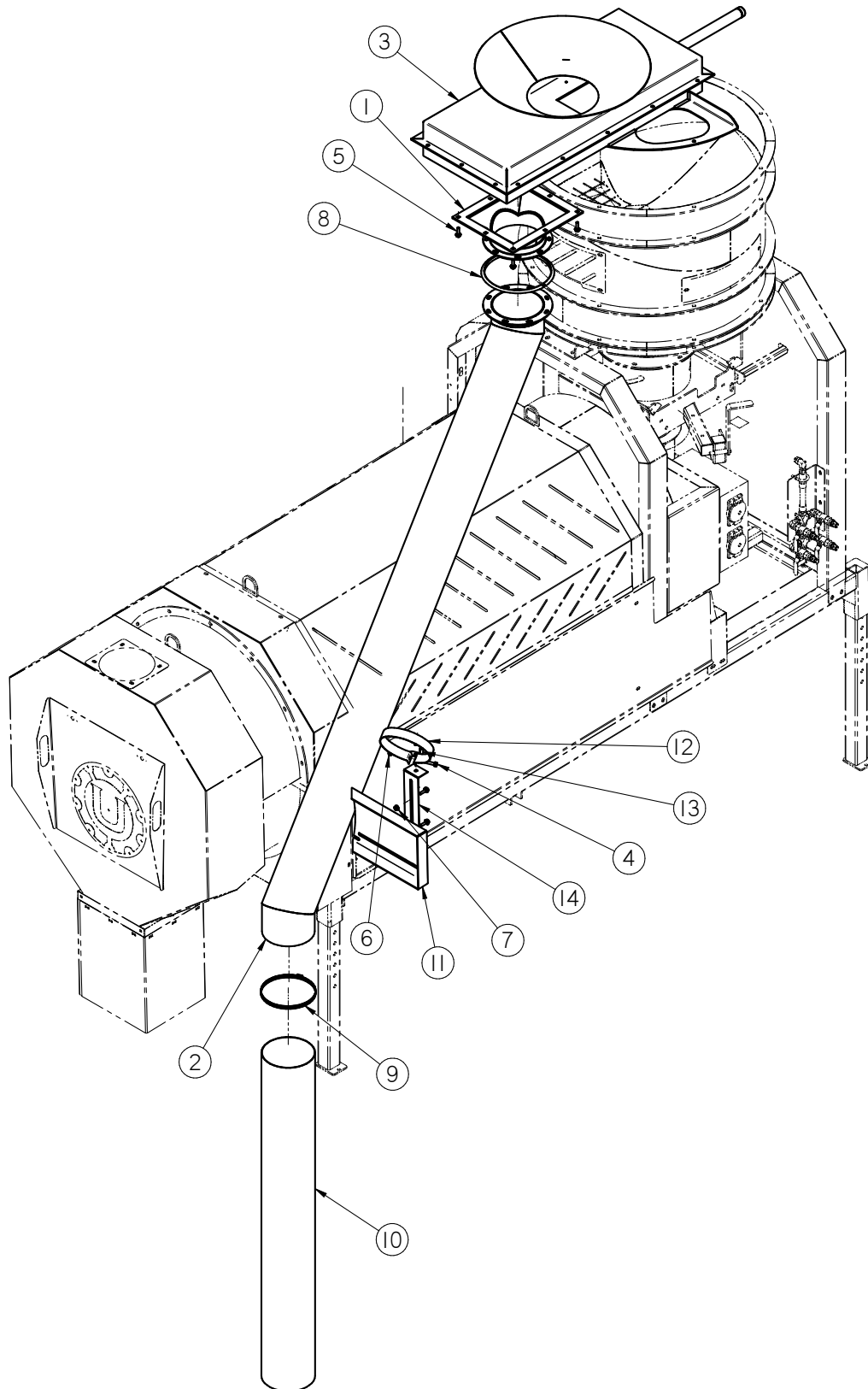


BIN SITE ACCESSORIES

SIDE DISCHARGE DIVERTER - Pro Box / Fill Conveyor (05-07-0493)

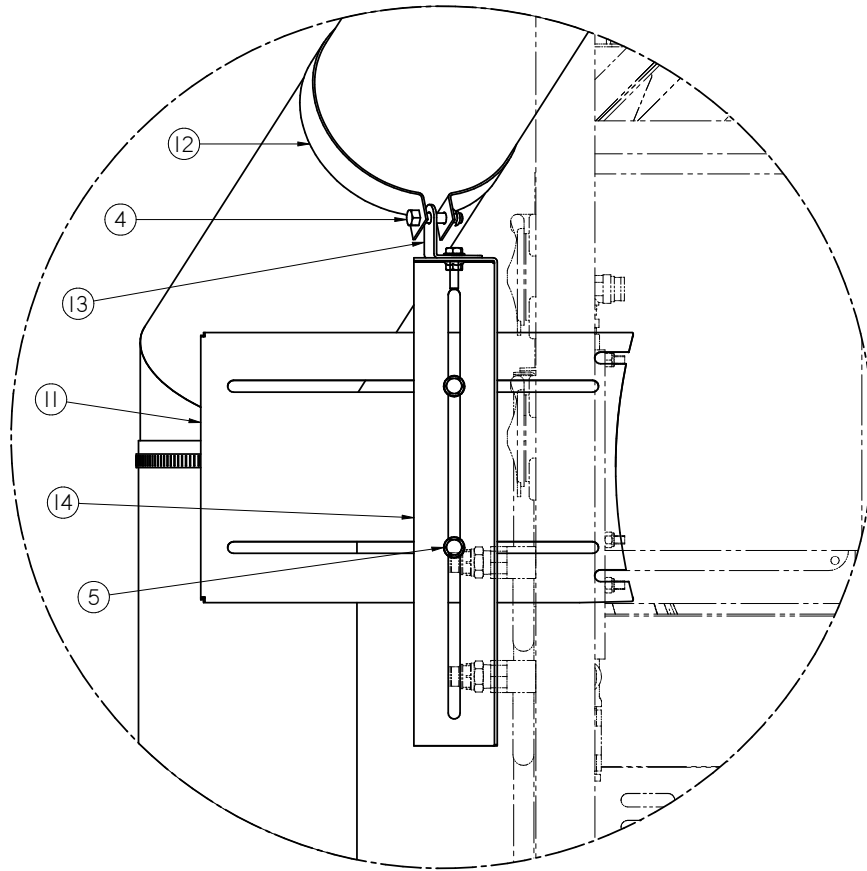
Item #	Part #	Description	Qty
1	05-03-0813	WDMT CHUTE TRTR DVTR TOP	1
2	05-03-0818	WDMT CHUTE TRTR DVTR BTM	1
3	05-03-1101	WDMT SPOUT SD DVTR TO 8IN OD	1
4	05-07-0433	ASSY DVTR SHUTTLE	1
5	05-10-3527	BRKT DVTR BRACE MNT	1
6	05-10-3528	BRACE DVTR TRTR MNT	1
7	05-10-3529	BRKT DVTR TRTR MNT	1
8	06-01-0007	BOLT, .250-20 X 1 UNC ZP GRADE 5	4
9	06-01-0189	BOLT FLG .375-16 X 1.250 ZP GR5	8
10	06-03-0014	NUT LOCK FLG .375-16 ZP GR5	8
11	06-07-0024	CLMP HOSE 7.125 TO 10 X 9/16 SS	1
12	102331	BYPASS DSCHG SPOUT EXT 8ID	1

SIDE DISCHARGE DIVERTER - Fill Conveyor - 8FT Drum (05-07-0547)



BIN SITE ACCESSORIES

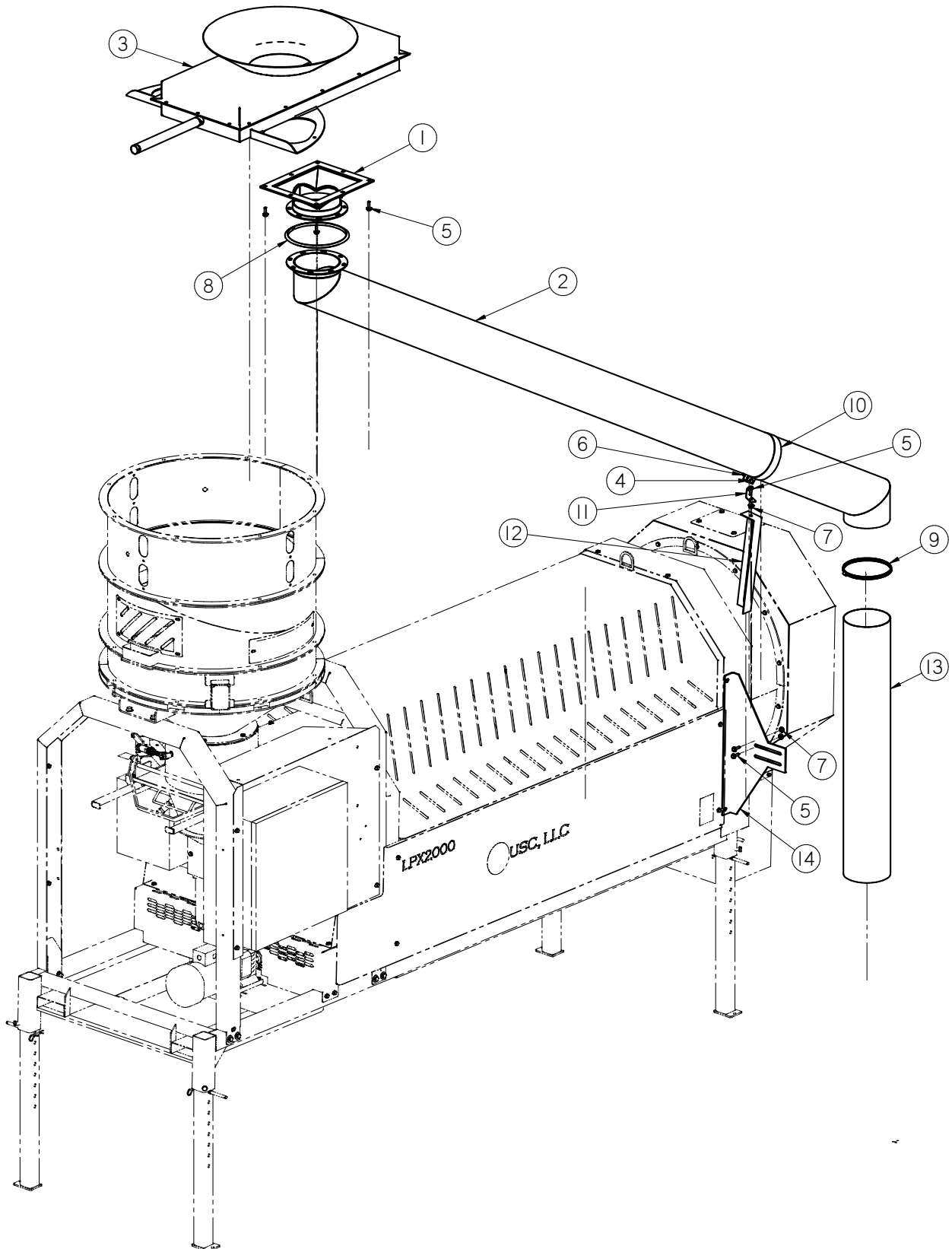
SIDE DISCHARGE DIVERTER - Fill Conveyor - 8FT Drum (05-07-0547)



DETAIL A

Item #	Part #	Description	Qty
1	05-03-1150	WDMT TRANS SHTL DVTR TO 8IN FLG	1
2	05-03-1151	WDMT SPOUT 8IN FOR 8FT DRUM	1
3	05-07-0433	ASSY DVTR SHUTTLE	1
4	06-01-0019	BOLT .375-16 X 1.75 ZP GR5	1
5	06-01-0189	BOLT FLG .375-16 X 1.250 ZP GR5	9
6	06-03-0003	NUT NYL LOCK .375-16 ZP GR5	1
7	06-03-0014	NUT LOCK FLG .375-16 ZP GR5	5
8	06-07-0022	8IN BAND CLAMP	1
9	06-07-0024	CLMP HOSE 7.125 TO 10 X 9/16 SS	1
10	102331	BYPASS DSCHG SPOUT EXT 8ID	1
11	10252F	BRKT MNT TRTR BYPASS	1
12	102531	PSM TUBE ATTACH	1
13	102539	BRKT TUBE ATTACH L	1
14	10253A	BRKT MNT TRTR BYPASS TUBE	1

SIDE DISCHARGE DIVERTER - Fill Conveyor - 10FT Drum (05-07-0548)

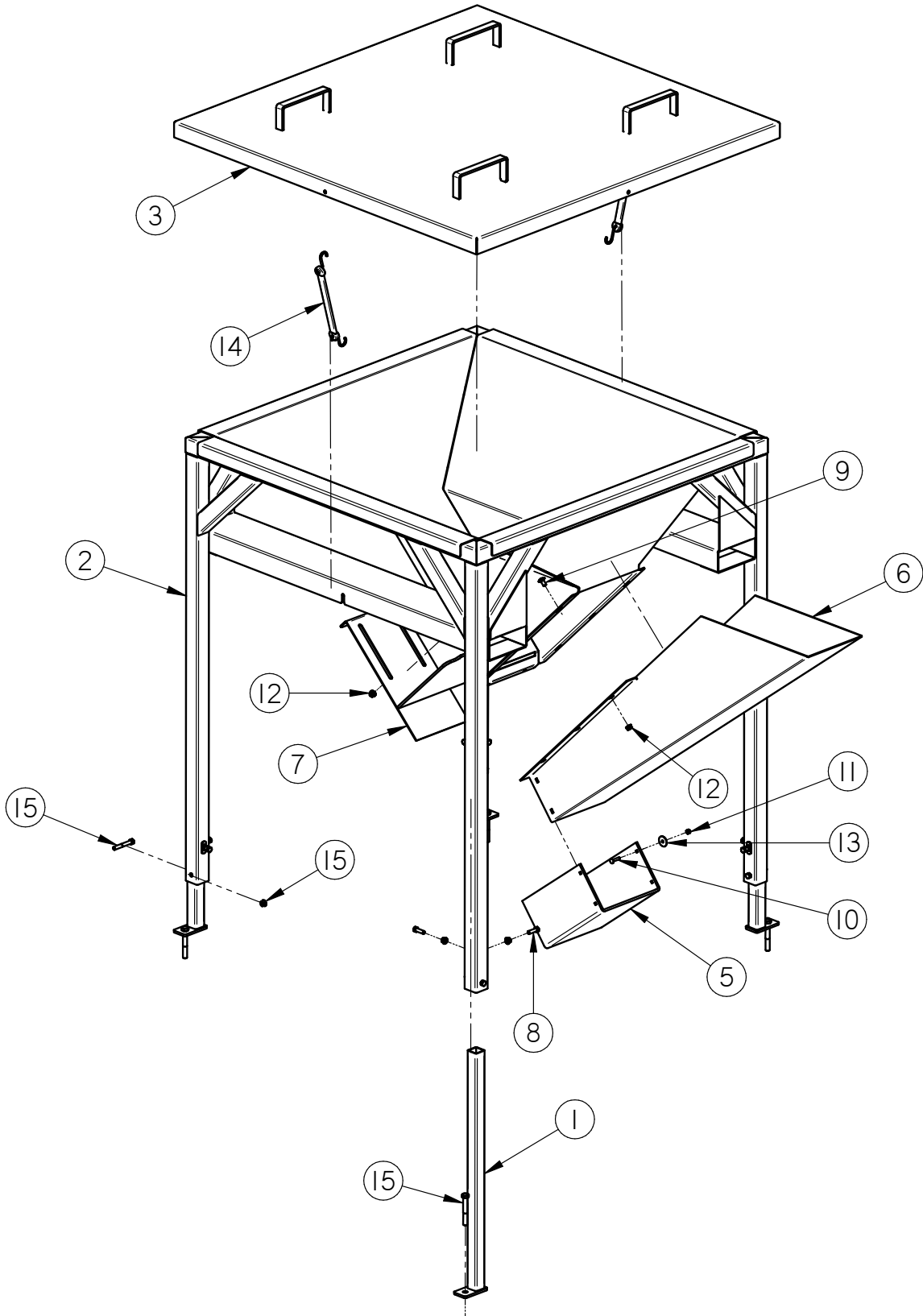


BIN SITE ACCESSORIES

SIDE DISCHARGE DIVERTER - Fill Conveyor - 10FT Drum (05-07-0548)

Item #	Part #	Description	Qty
1	05-03-1150	WDMT TRANS SHTL DVTR TO 8IN FLG	1
2	05-03-1152	WDMT SPOUT 8IN FOR 10FT DRUM	1
3	05-07-0433	ASSY DVTR SHUTTLE	1
4	06-01-0019	BOLT .375-16 X 1.75 ZP GR5	1
5	06-01-0189	BOLT FLG .375-16 X 1.250 ZP GR5	7
6	06-03-0003	NUT NYL LOCK .375-16 ZP GR5	1
7	06-03-0014	NUT LOCK FLG .375-16 ZP GR5	3
8	06-07-0022	8IN BAND CLAMP	1
9	06-07-0024	CLMP HOSE 7.125 TO 10 X 9/16 SS	1
10	102531	PSM TUBE ATTACH	1
11	102539	BRKT TUBE ATTACH L	1
12	10253A	BRKT MNT TRTR BYPASS TUBE	1
13	102A94	SPOUT	1
14	103744	BRKT MNT TRTR BYPASS	1

PRO BOX TO TRANSFER CONVEYOR ASSEMBLY (05-07-0324)



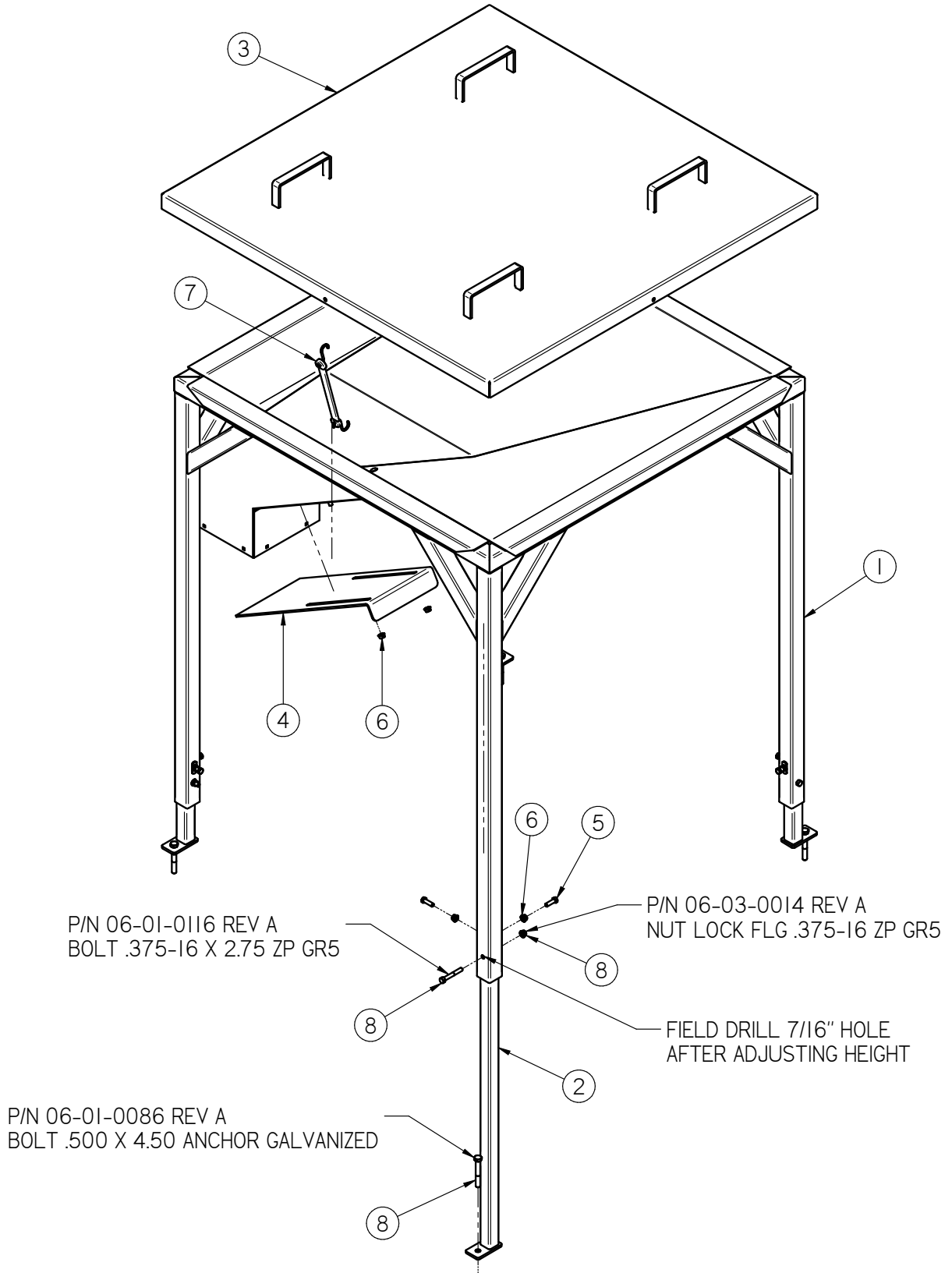
BIN SITE ACCESSORIES

PRO BOX TO TRANSFER CONVEYOR ASSEMBLY (05-07-0324)

Item #	Part #	Description	Qty
1	05-03-0820	WDMT SOCK 2 X 2 TUBE PRO BOX HOPP	4
2	05-03-0845	WDMT DUMP HOPP CNVR IN SLGT ADJ LEG	1
3	05-07-0631	WDMT PRO BOX DUMP HPPR LID	1
4	05-10-3287	UB SEAL 1	1
5	05-10-3288	UB SEAL 2	1
6	05-10-3607	CHUTE DUMP HOPP CNVR IN	1
7	05-10-3609	PLT PRO BOX HOPP CNVR IN SLGT	1
8	06-01-0053	BOLT .375-16 X 1.25 ZP GR5	8
9	06-01-0153	BOLT CRG .375-16X.750 ZP SHORT NECK	6
10	06-01-0159	BOLT CRG .25-20 X 1.25 ZP GR5	6
11	06-03-0001	NUT,LOCK, .250-20 ZP G5 NYLON INSERT	6
12	06-03-0014	NUT LOCK FLG .375-16 ZP GR5	16
13	06-05-0024	WSHR FNDR .250ID 1.25OD .062THK ZP	6
14	06-09-0092	STRAP RBBR 10IN LG	2
15	13-10-0009	KIT INSTALL PRO BOX HOPP ADJ LEG	1

BIN SITE ACCESSORIES

PRO BOX TO UNDERBIN CONVEYOR ASSEMBLY (05-07-0329)



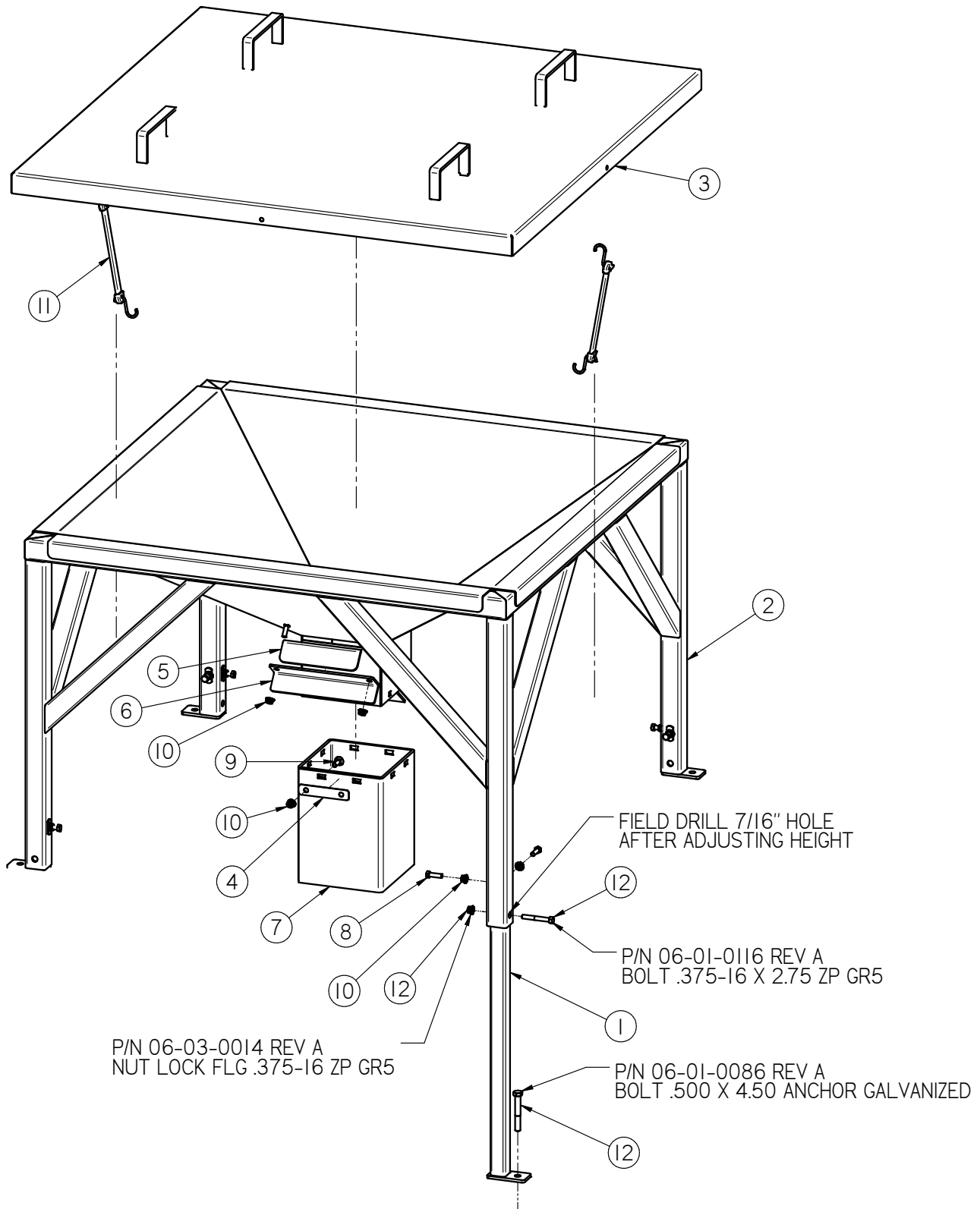
BIN SITE ACCESSORIES

PRO BOX TO UNDERBIN CONVEYOR ASSEMBLY (05-07-0329)

Item #	Part #	Description	Qty
1	05-03-0869	WDMT PRO BOX DUMP HOPP UB HEAD DSCH	1
2	05-03-1174	WDMT SOCK PRO BOX HOPP 52LG	4
3	05-07-0631	WDMT PRO BOX DUMP HPPR LID	1
4	05-10-3672	PLT PRO BOX HOPP SLGT UB HEAD DSCHG	1
5	06-01-0053	BOLT .375-16 X 1.25 ZP GR5	8
6	06-03-0014	NUT LOCK FLG .375-16 ZP GR5	10
7	06-09-0092	STRAP RBBR 10IN LG	2
8	13-10-0009	KIT INSTALL PRO BOX HOPP ADJ LEG	1

BIN SITE ACCESSORIES

PRO BOX TO TRANSFER CONVEYOR ASSEMBLY (05-07-0313)

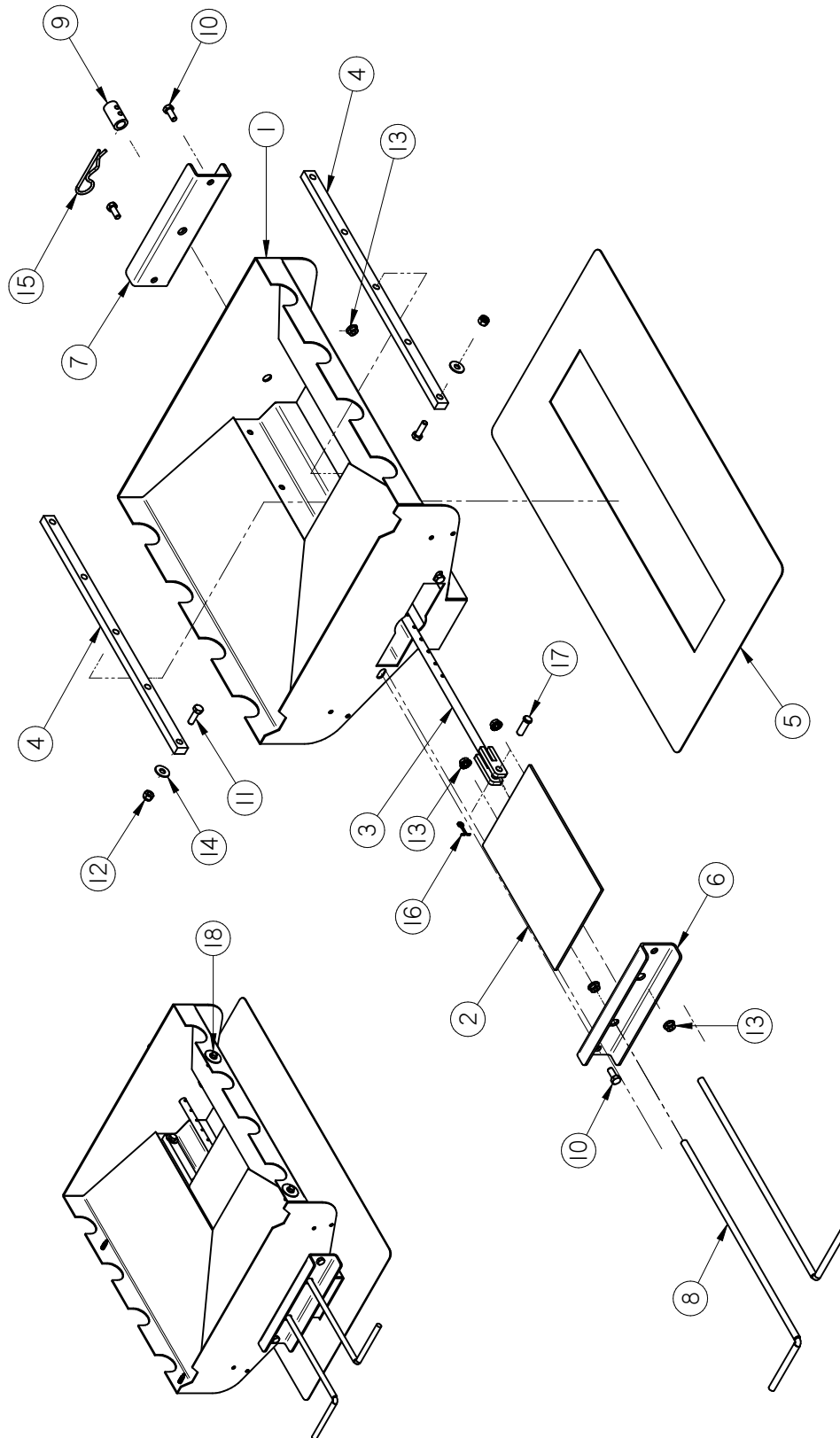


BIN SITE ACCESSORIES

PRO BOX TO TRANSFER CONVEYOR ASSEMBLY (05-07-0313)

Item #	Part #	Description	Qty
1	05-03-0820	WDMT SOCK 2 X 2 TUBE PRO BOX HOPP	4
2	05-03-1311	WDMT PRO BOX DUMP HOPP ADJ LEG	1
3	05-07-0631	WDMT PRO BOX DUMP HPPR LID	1
4	05-10-3530	PLT PRO BOX HOPP EXT HLDR	4
5	05-10-4201	PLT PRO BOX HOPP SLGT	1
6	05-10-4202	BRKT PRO BOX HOPP SLGT CLMP	1
7	05-10-4203	PLT PRO BOX HOPP EXT RBBR	1
8	06-01-0053	BOLT .375-16 X 1.25 ZP GR5	8
9	06-01-0127	BOLT CRG .375-16 X 1.25 ZP GR5	8
10	06-03-0014	NUT LOCK FLG .375-16 ZP GR5	18
11	06-09-0098	STRAP RBBR 14IN LG	2
12	13-10-0009	KIT INSTALL PRO BOX HOPP ADJ LEG	1

MANUAL CONTROL BIN GATE ASSEMBLY (13-05-0175)

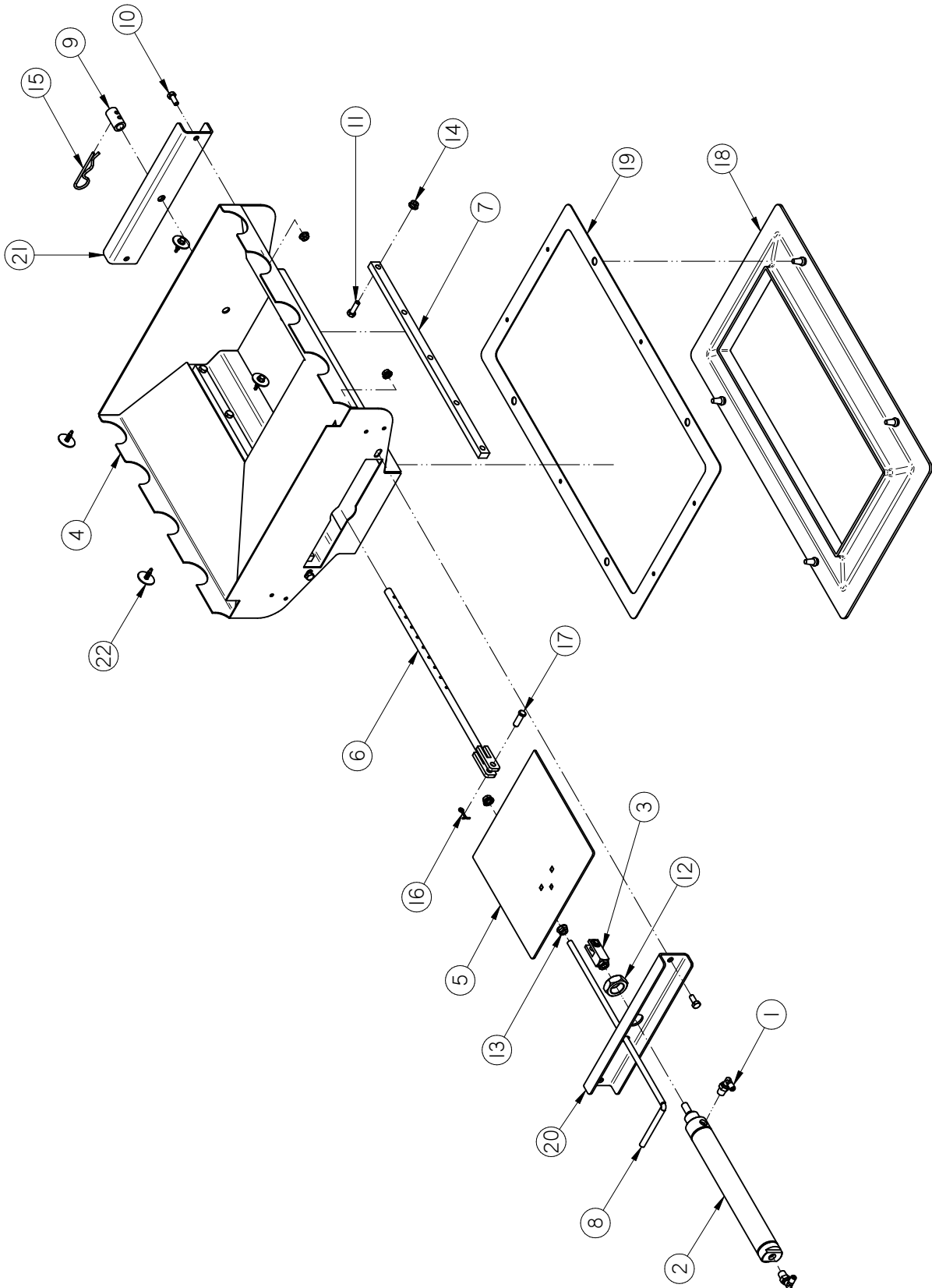


BIN SITE ACCESSORIES

MANUAL CONTROL BIN GATE ASSEMBLY (13-05-0175)

Item #	Part #	Description	Qty
1	05-03-0519	WDMT UB HOPPER	1
2	05-03-0520	WDMT UB HOPPER SLIDE	1
3	05-04-0078	WDMT SLGT STOP ROD	1
4	05-10-3103	PLT UB HOPP SLIDE BEARING	2
5	05-10-3113	PLT UNDERBIN HOPP SEAL	1
6	05-10-3322	PLT UB HOPP CNTL ROD GUIDE MNL CNTL	1
7	05-10-3492	PLT UB HOPP CYL MNT	1
8	05-11-0197	UB HOPP SLIDE ROD	2
9	05-11-0268	SLV SLIDE GSTE ADJ STOP	1
10	06-01-0010	BOLT .313-18 X 0.75 ZP GR5	4
11	06-01-0012	BOLT .313-18 X 1.00 ZP GR5	10
12	06-03-0002	NUT NYL LOCK .313-18 ZP GR5	10
13	06-03-0019	NUT LOCK FLG .3125-18 ZP GR5	8
14	06-05-0003	WSHR FLAT .313 ZP	10
15	06-09-0002	PIN CLIP HITCH 3.063 SIZE 9 ZP	1
16	06-09-0013	PIN CTTR .125 X .75 ZP	1
17	06-09-0059	PIN CLVS .375 X 1.125 PLN	1
18	13-10-0008	KIT INSTALL UB HOPP	1

8 INCH EASTON BIN GATE ASSEMBLY (13-05-0358)

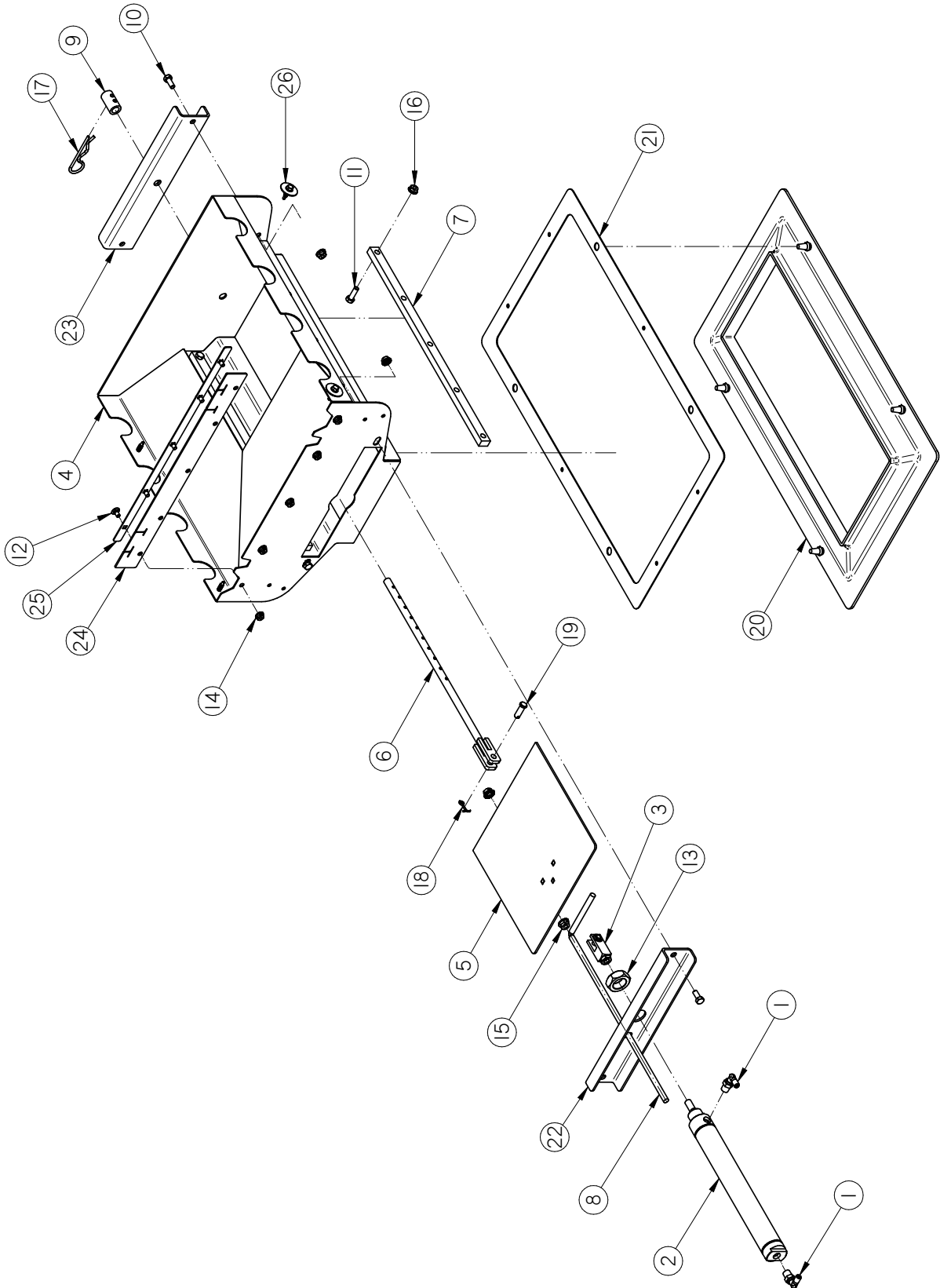


BIN SITE ACCESSORIES

8 INCH EASTON BIN GATE ASSEMBLY (13-05-0358)

Item #	Part #	Description	Qty
1	02-16-0044	FTTG PUSH 90 DEG .250OD X .250 NPT	2
2	03-17-0045	BIMBA CYL 10" ST 1.5 BR MRS-1710-DB	1
3	03-17-0046	CLEVIS ASSY BIMBA D-8311-A	1
4	05-03-1404	WDMT UB HOPPER SLIDE 8IN	1
5	05-03-1556	WDMT UB HOPP EASTON 8IN	1
6	05-04-0078	WDMT SLGT STOP ROD	1
7	05-10-3103	PLT UB HOPP SLIDE BEARING	2
8	05-11-0197	UB HOPP SLIDE ROD	1
9	05-11-0268	SLV SLIDE GSTE ADJ STOP	1
10	06-01-0010	BOLT .313-18 X 0.75 ZP GR5	4
11	06-01-0012	BOLT .313-18 X 1.00 ZP GR5	10
12	06-02-0067	NUT BIMBA D-1331	1
13	06-03-0014	NUT LOCK FLG .375-16 ZP GR5	2
14	06-03-0019	NUT LOCK FLG .3125-18 ZP GR5	14
15	06-09-0002	PIN CLIP HITCH 3.063 SIZE 9 ZP	1
16	06-09-0013	PIN CTTR .125 X .75 ZP	1
17	06-09-0059	PIN CLVS .375 X 1.125 PLN	1
18	06-10-0048	SEAL RBBR SLG UB	1
19	102ECC	PLT UNDERBIN HOPP SEAL	1
20	103247	PLT UB HOPP CYL MNT	1
21	103248	PLT UB HOPP MNT	1
22	13-10-0008	KIT INSTALL UB HOPP	1

MERIDIAN BIN GATE ASSEMBLY (13-05-0293)

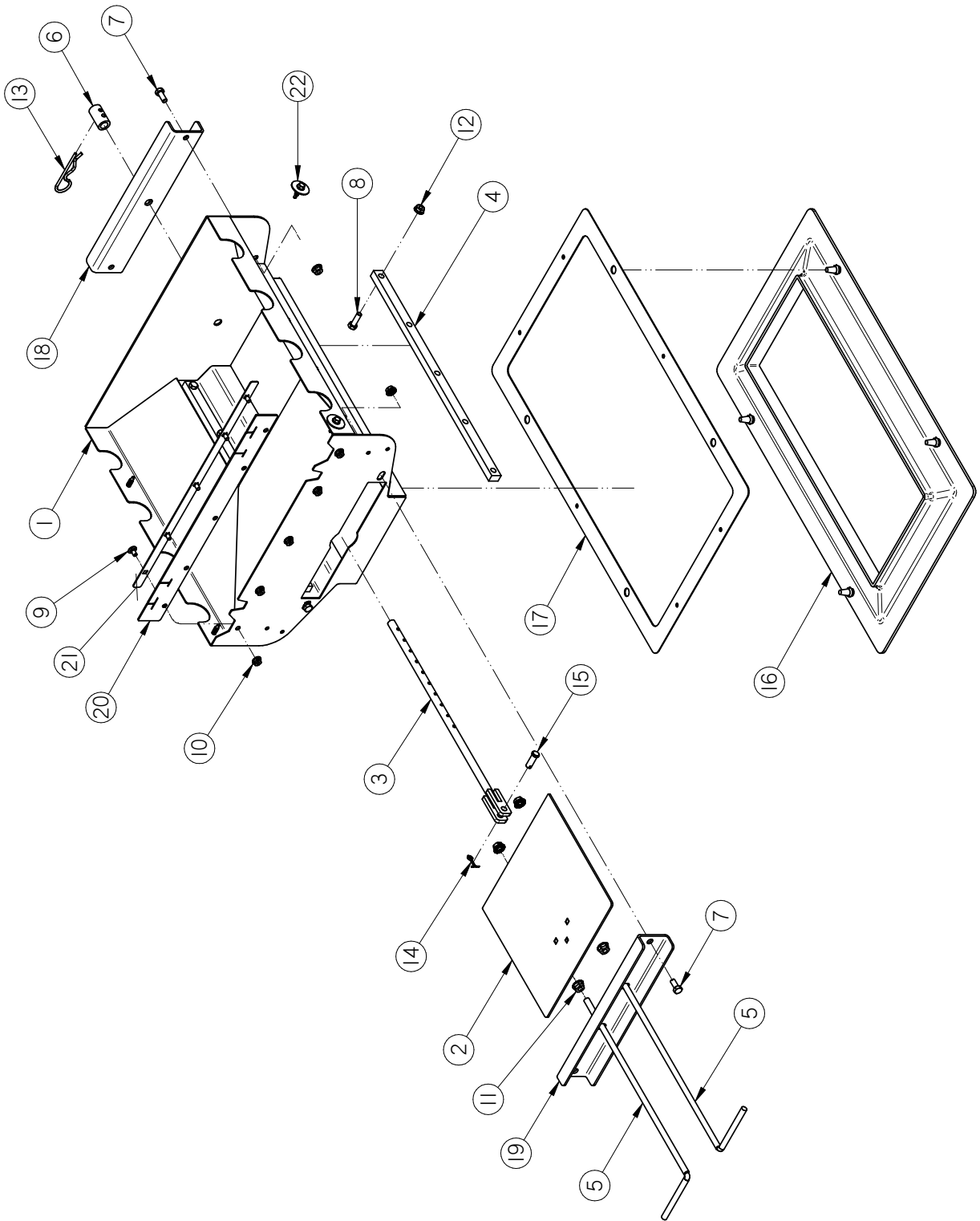


BIN SITE ACCESSORIES

MERIDIAN BIN GATE ASSEMBLY (13-05-0293)

Item #	Part #	Description	Qty
1	02-16-0044	FTTG PUSH 90 DEG .250OD X .250 NPT	2
2	03-17-0045	BIMBA CYL 10" ST 1.5 BR MRS-1710-DB	1
3	03-17-0046	CLEVIS ASSY BIMBA D-8311-A	1
4	05-03-1370	WDMT UB HOPP MERIDIAN 8IN	1
5	05-03-1404	WDMT UB HOPPER SLIDE 8IN	1
6	05-04-0078	WDMT SLGT STOP ROD	1
7	05-10-3103	PLT UB HOPP SLIDE BEARING	2
8	05-11-0197	UB HOPP SLIDE ROD	1
9	05-11-0268	SLV SLIDE GSTE ADJ STOP	1
10	06-01-0010	BOLT .313-18 X 0.75 ZP GR5	4
11	06-01-0012	BOLT .313-18 X 1.00 ZP GR5	10
12	06-01-0150	BOLT, CARRIAGE, .250-20x.50 G5 ZP	5
13	06-02-0067	NUT BIMBA D-1331	1
14	06-03-0013	NUT,LOCK, FLG .250-20 ZP SERRATED	5
15	06-03-0014	NUT LOCK FLG .375-16 ZP GR5	2
16	06-03-0019	NUT LOCK FLG .3125-18 ZP GR5	14
17	06-09-0002	PIN CLIP HITCH 3.063 SIZE 9 ZP	1
18	06-09-0013	PIN CTTR .125 X .75 ZP	1
19	06-09-0059	PIN CLVS .375 X 1.125 PLN	1
20	06-10-0048	SEAL RBBR SLG UB	1
21	102ECC	PLT UNDERBIN HOPP SEAL	1
22	103247	PLT UB HOPP CYL MNT	1
23	103248	PLT UB HOPP MNT	1
24	105B4D	SEAL GATE	1
25	105B5F	PLT SEAL BACKING	1
26	13-10-0008B	KIT INSTALL UB HOPP	1

8 INCH MANUAL MERIDIAN BIN GATE ASSEMBLY (13-05-0367)

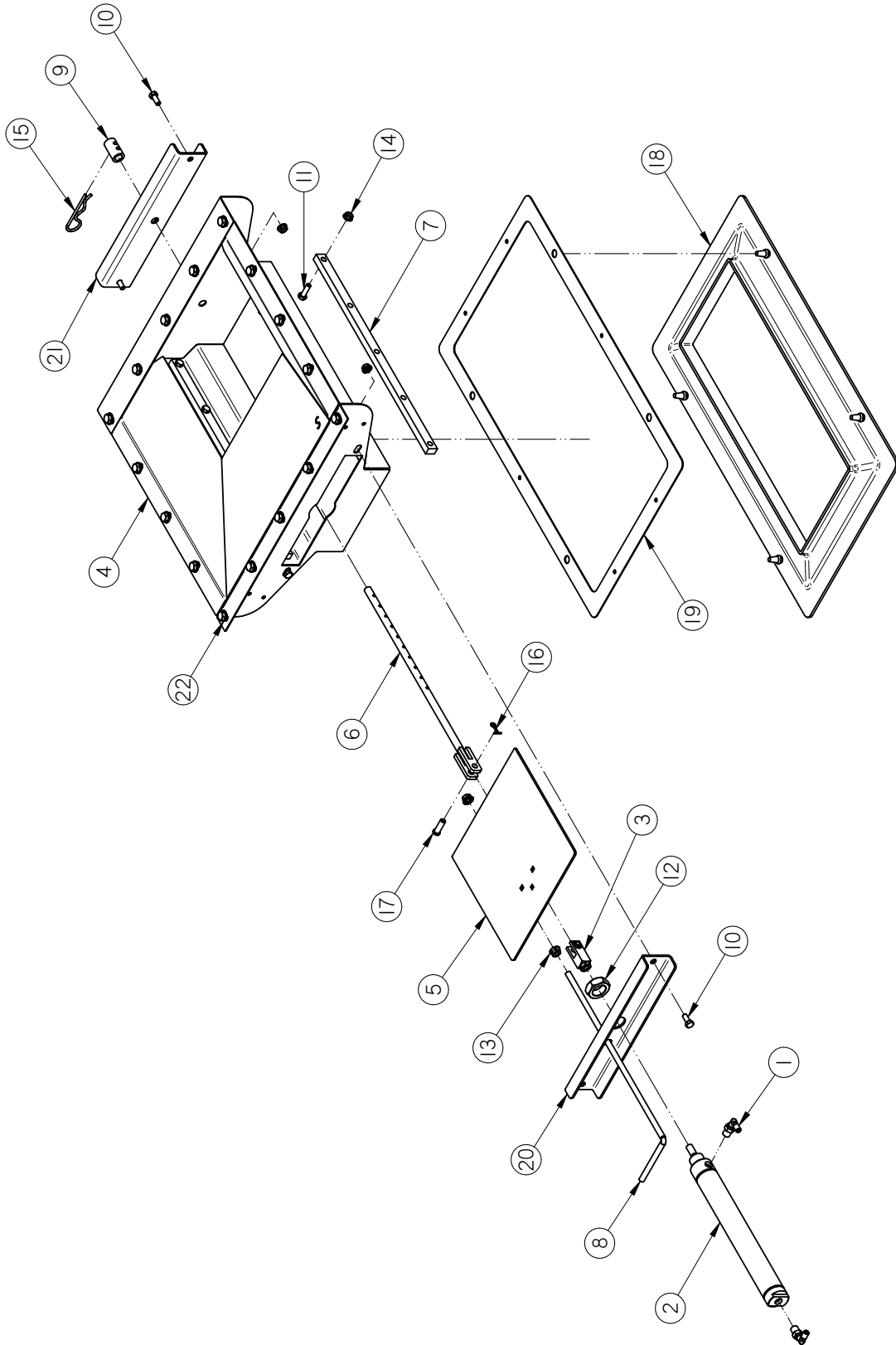


BIN SITE ACCESSORIES

8 INCH MANUAL MERIDIAN BIN GATE ASSEMBLY (13-05-0367)

Item #	Part #	Description	Qty
1	05-03-1370	WDMT UB HOPP MERIDIAN 8IN	1
2	05-03-1404	WDMT UB HOPPER SLIDE 8IN	1
3	05-04-0078	WDMT SLGT STOP ROD	1
4	05-10-3103	PLT UB HOPP SLIDE BEARING	2
5	05-11-0197	UB HOPP SLIDE ROD	2
6	05-11-0268	SLV SLIDE GSTE ADJ STOP	1
7	06-01-0010	BOLT .313-18 X 0.75 ZP GR5	4
8	06-01-0012	BOLT .313-18 X 1.00 ZP GR5	10
9	06-01-0150	BOLT, CARRIAGE, .250-20x.50 G5 ZP	5
10	06-03-0013	NUT,LOCK, FLG .250-20 ZP SERRATTED	5
11	06-03-0014	NUT LOCK FLG .375-16 ZP GR5	4
12	06-03-0019	NUT LOCK FLG .3125-18 ZP GR5	14
13	06-09-0002	PIN CLIP HITCH 3.063 SIZE 9 ZP	1
14	06-09-0013	PIN CTTR .125 X .75 ZP	1
15	06-09-0059	PIN CLVS .375 X 1.125 PLN	1
16	06-10-0048	SEAL RBBR SLG UB	1
17	102ECC	PLT UNDERBIN HOPP SEAL	1
18	103248	PLT UB HOPP MNT	1
19	103DBC	PLT UB HOPP CNTL ROD GUIDE MNL CNTL	1
20	105B4D	SEAL GATE	1
21	105B5F	PLT SEAL BACKING	1
22	13-10-0008B	KIT INSTALL UB HOPP	1

SCHULD - BUSHNELL BIN GATE ASSEMBLY (13-05-0294)

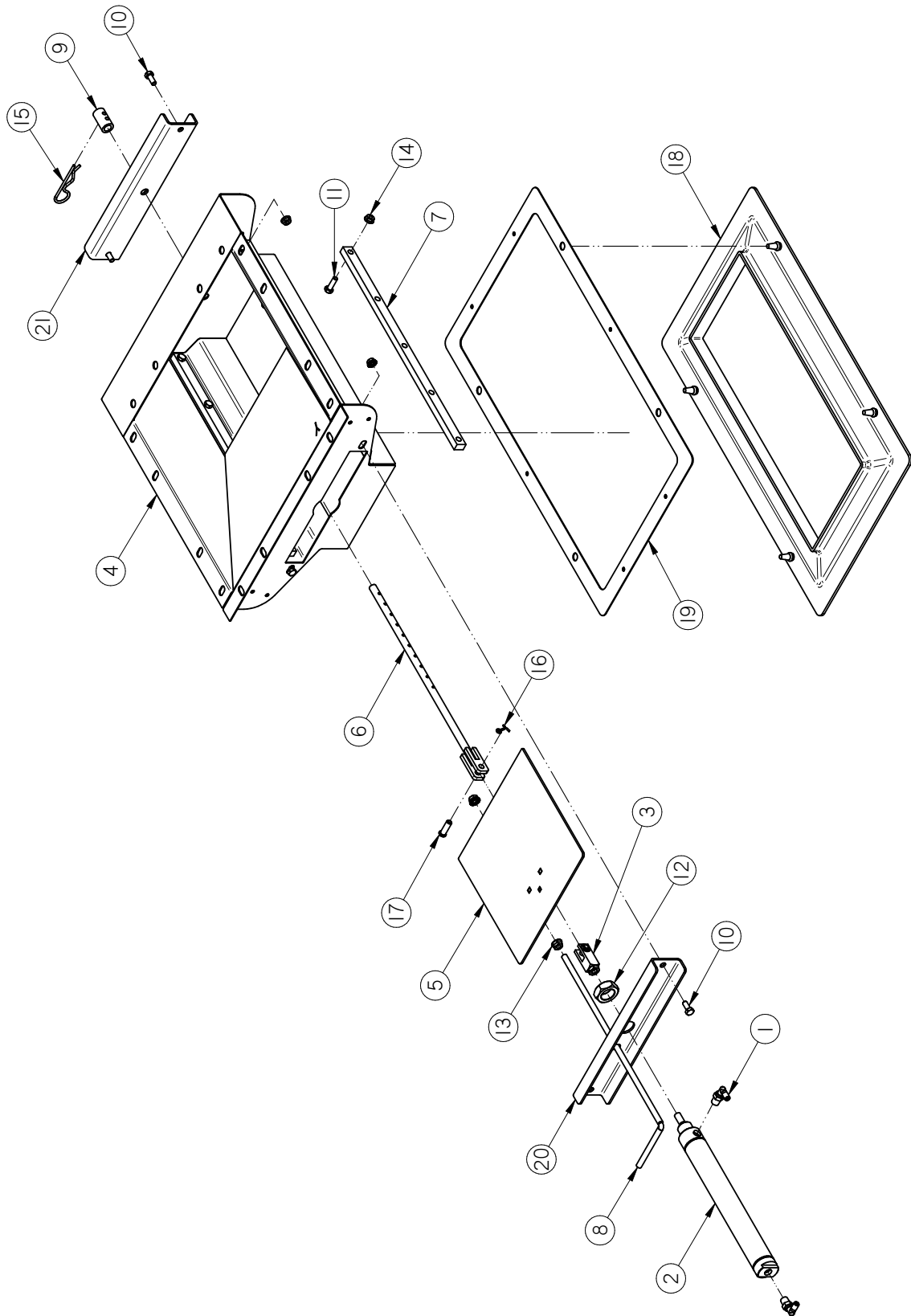


BIN SITE ACCESSORIES

SCHULD - BUSHNELL BIN GATE ASSEMBLY (13-05-0294)

Item #	Part #	Description	Qty
1	02-16-0044	FTTG PUSH 90 DEG .250OD X .250 NPT	2
2	03-17-0045	BIMBA CYL 10" ST 1.5 BR MRS-1710-DB	1
3	03-17-0046	CLEVIS ASSY BIMBA D-8311-A	1
4	05-03-1371	WDMT UB HOPP SCH-BUSH 8IN	1
5	05-03-1404	WDMT UB HOPPER SLIDE 8IN	1
6	05-04-0078	WDMT SLGT STOP ROD	1
7	05-10-3103	PLT UB HOPP SLIDE BEARING	2
8	05-11-0197	UB HOPP SLIDE ROD	1
9	05-11-0268	SLV SLIDE GSTE ADJ STOP	1
10	06-01-0010	BOLT .313-18 X 0.75 ZP GR5	4
11	06-01-0012	BOLT .313-18 X 1.00 ZP GR5	10
12	06-02-0067	NUT BIMBA D-1331	1
13	06-03-0014	NUT LOCK FLG .375-16 ZP GR5	2
14	06-03-0019	NUT LOCK FLG .3125-18 ZP GR5	14
15	06-09-0002	PIN CLIP HITCH 3.063 SIZE 9 ZP	1
16	06-09-0013	PIN CTTR .125 X .75 ZP	1
17	06-09-0059	PIN CLVS .375 X 1.125 PLN	1
18	06-10-0048	SEAL RBBR SLG UB	1
19	102ECC	PLT UNDERBIN HOPP SEAL	1
20	103247	PLT UB HOPP CYL MNT	1
21	103248	PLT UB HOPP MNT	1
22	13-10-0007	KIT INSTALL UB HOPP SCHULD-BUSHNELL	1

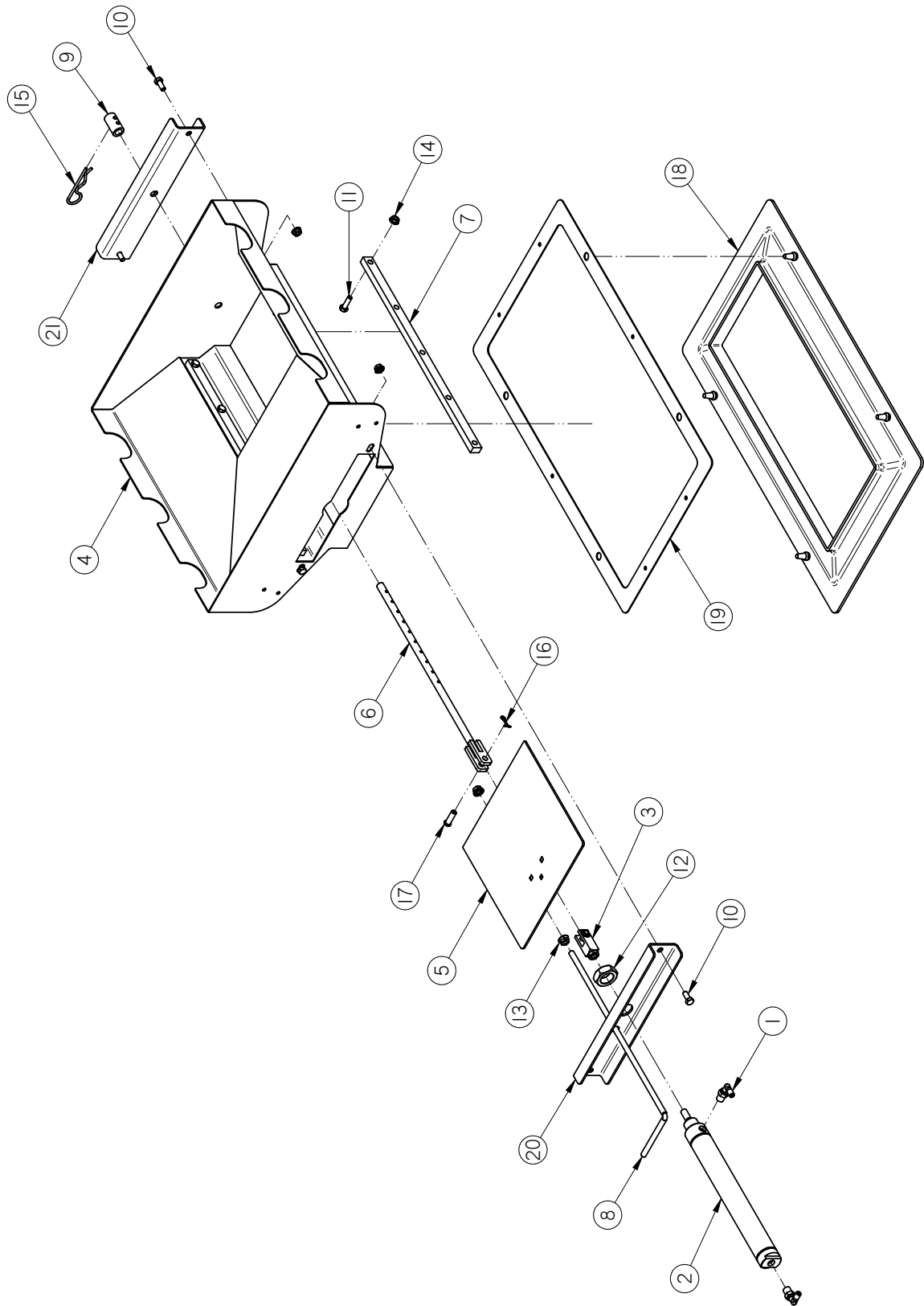
BIN SITE ACCESSORIES
YORK BIN GATE ASSEMBLY (13-05-0295)



BIN SITE ACCESSORIES
YORK BIN GATE ASSEMBLY (13-05-0295)

Item #	Part #	Description	Qty
1	02-16-0044	FTTG PUSH 90 DEG .250OD X .250 NPT	2
2	03-17-0045	BIMBA CYL 10" ST 1.5 BR MRS-1710-DB	1
3	03-17-0046	CLEVIS ASSY BIMBA D-8311-A	1
4	05-03-1372	WDMT UB HOPP YORK 8IN	1
5	05-03-1404	WDMT UB HOPPER SLIDE 8IN	1
6	05-04-0078	WDMT SLGT STOP ROD	1
7	05-10-3103	PLT UB HOPP SLIDE BEARING	2
8	05-11-0197	UB HOPP SLIDE ROD	1
9	05-11-0268	SLV SLIDE GSTE ADJ STOP	1
10	06-01-0010	BOLT .313-18 X 0.75 ZP GR5	4
11	06-01-0012	BOLT .313-18 X 1.00 ZP GR5	10
12	06-02-0067	NUT BIMBA D-1331	1
13	06-03-0014	NUT LOCK FLG .375-16 ZP GR5	2
14	06-03-0019	NUT LOCK FLG .3125-18 ZP GR5	14
15	06-09-0002	PIN CLIP HITCH 3.063 SIZE 9 ZP	1
16	06-09-0013	PIN CTTR .125 X .75 ZP	1
17	06-09-0059	PIN CLVS .375 X 1.125 PLN	1
18	06-10-0048	SEAL RBBR SLG UB	1
19	102ECC	PLT UNDERBIN HOPP SEAL	1
20	103247	PLT UB HOPP CYL MNT	1
21	103248	PLT UB HOPP MNT	1

WESTEEL BIN GATE ASSEMBLY (13-05-0296)

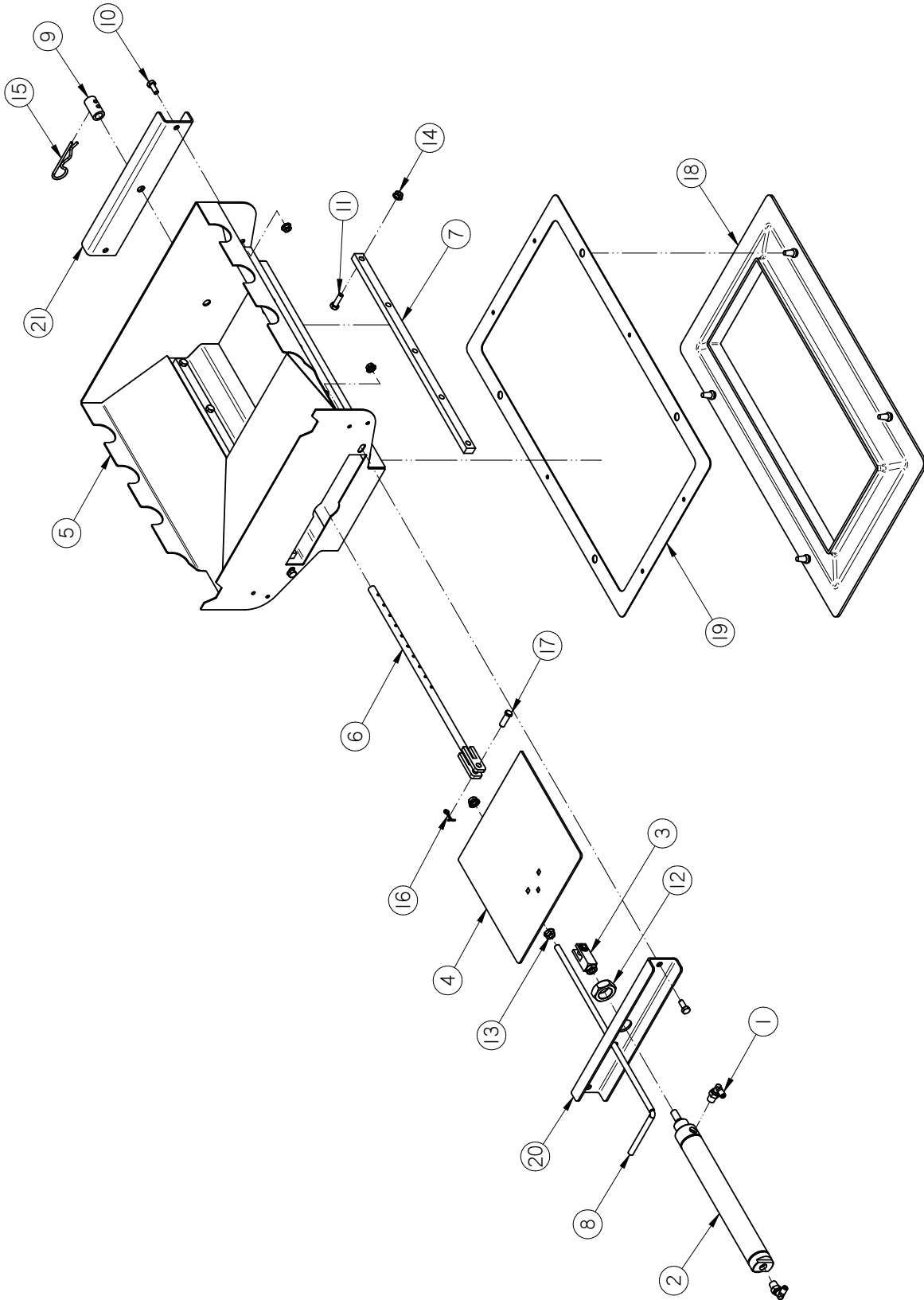


BIN SITE ACCESSORIES

WESTEEL BIN GATE ASSEMBLY (13-05-0296)

Item #	Part #	Description	Qty
1	02-16-0044	FTTG PUSH 90 DEG .250OD X .250 NPT	2
2	03-17-0045	BIMBA CYL 10" ST 1.5 BR MRS-1710-DB	1
3	03-17-0046	CLEVIS ASSY BIMBA D-8311-A	1
4	05-03-1373	WDMT UB HOPPER WESTEEL 8IN	1
5	05-03-1404	WDMT UB HOPPER SLIDE 8IN	1
6	05-04-0078	WDMT SLGT STOP ROD	1
7	05-10-3103	PLT UB HOPP SLIDE BEARING	2
8	05-11-0197	UB HOPP SLIDE ROD	1
9	05-11-0268	SLV SLIDE GSTE ADJ STOP	1
10	06-01-0010	BOLT .313-18 X 0.75 ZP GR5	4
11	06-01-0012	BOLT .313-18 X 1.00 ZP GR5	10
12	06-02-0067	NUT BIMBA D-1331	1
13	06-03-0014	NUT LOCK FLG .375-16 ZP GR5	2
14	06-03-0019	NUT LOCK FLG .3125-18 ZP GR5	14
15	06-09-0002	PIN CLIP HITCH 3.063 SIZE 9 ZP	1
16	06-09-0013	PIN CTTR .125 X .75 ZP	1
17	06-09-0059	PIN CLVS .375 X 1.125 PLN	1
18	06-10-0048	SEAL RBBR SLG UB	1
19	102ECC	PLT UNDERBIN HOPP SEAL	1
20	103247	PLT UB HOPP CYL MNT	1
21	103248	PLT UB HOPP MNT	1
22	13-10-0008	KIT INSTALL UB HOPP SCHULD WESTEEL	1

AMBER WAVES BIN GATE ASSEMBLY (13-05-0307)

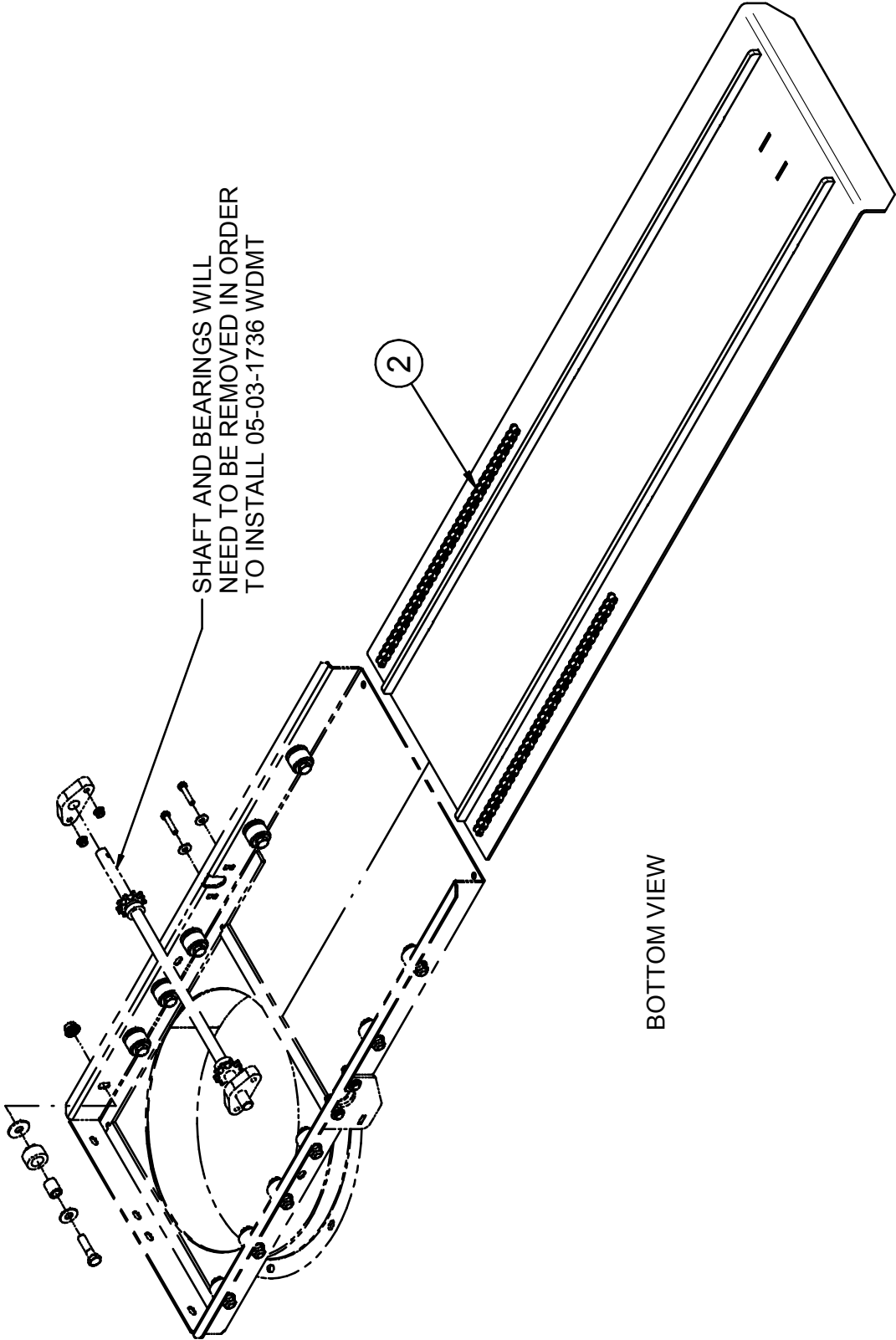


BIN SITE ACCESSORIES

AMBER WAVES BIN GATE ASSEMBLY (13-05-0307)

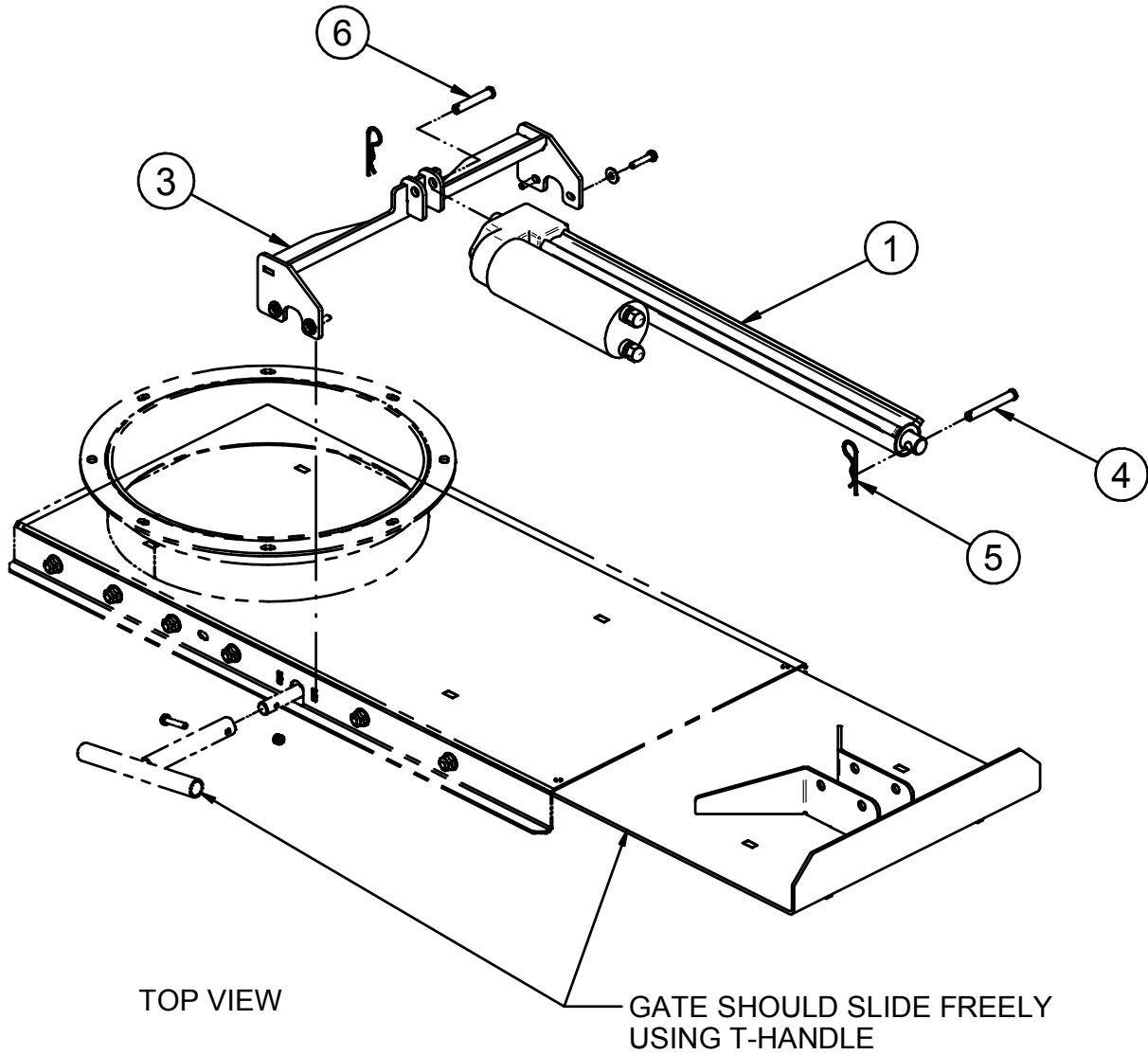
Item #	Part #	Description	Qty
1	02-16-0044	FTTG PUSH 90 DEG .250OD X .250 NPT	2
2	03-17-0045	BIMBA CYL 10" ST 1.5 BR MRS-1710-DB	1
3	03-17-0046	CLEVIS ASSY BIMBA D-8311-A	1
4	05-03-1404	WDMT UB HOPPER SLIDE 8IN	1
5	05-03-1405	WDMT UB HOPP AM-WAVES 8IN	1
6	05-04-0078	WDMT SLGT STOP ROD	1
7	05-10-3103	PLT UB HOPP SLIDE BEARING	2
8	05-11-0197	UB HOPP SLIDE ROD	1
9	05-11-0268	SLV SLIDE GSTE ADJ STOP	1
10	06-01-0010	BOLT .313-18 X 0.75 ZP GR5	4
11	06-01-0012	BOLT .313-18 X 1.00 ZP GR5	10
12	06-02-0067	NUT BIMBA D-1331	1
13	06-03-0014	NUT LOCK FLG .375-16 ZP GR5	2
14	06-03-0019	NUT LOCK FLG .3125-18 ZP GR5	14
15	06-09-0002	PIN CLIP HITCH 3.063 SIZE 9 ZP	1
16	06-09-0013	PIN CTTR .125 X .75 ZP	1
17	06-09-0059	PIN CLVS .375 X 1.125 PLN	1
18	06-10-0048	SEAL RBBR SLG UB	1
19	102ECC	PLT UNDERBIN HOPP SEAL	1
20	103247	PLT UB HOPP CYL MNT	1
21	103248	PLT UB HOPP MNT	1
22	13-10-0008	KIT INSTALL UB HOPP	1

MERIDIAN ELECTRIC SLIDE GATE ASSEMBLY (13-05-0650)



BIN SITE ACCESSORIES

MERIDIAN ELECTRIC SLIDE GATE ASSEMBLY (13-05-0650)



Item #	Part #	Description	Qty
1	03-17-0147	ACTR MA4514B8145 1012LB 120V	1
2	05-03-1735	WDMT GATE ELEC	1
3	05-03-1736	WDMT DRV MNT	1
4	06-09-0005	PIN CLVS .500 X 3.50 PLN	1
5	06-09-0039	PIN CLIP HITCH 2.625 #11 1/8 IN ZP	2
6	06-09-0058	PIN CLVS .500 X 2.75 PLN	1

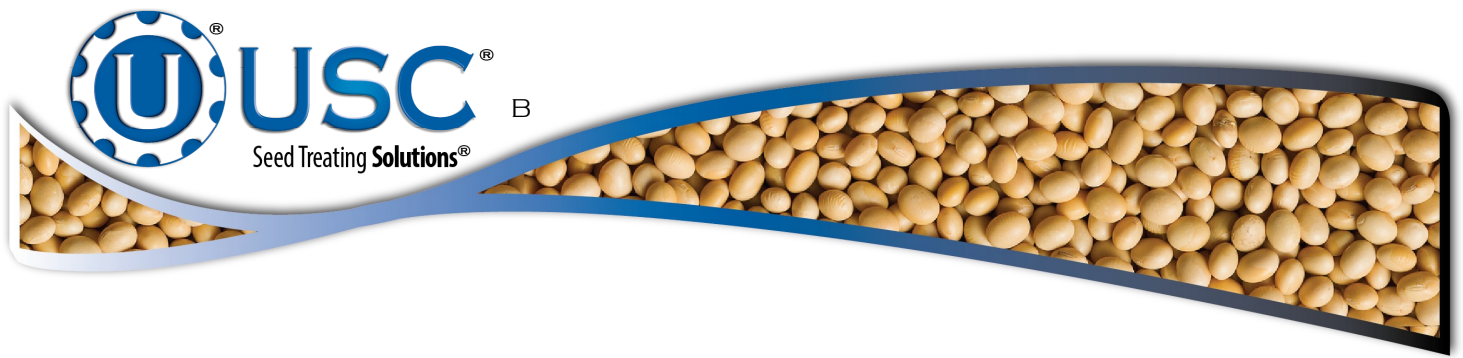
BIN SITE ACCESSORIES

NOTES:

USC LIMITED WARRANTY**SECTION
F**

USC, LLC, (Manufacturer) warrants its seed treating equipment as follows:

1. **Limited Warranty:** Manufacturer warrants that the Products sold hereunder will be free from defects in material and workmanship for a period of 18 months from date of shipment. If the Products do not conform to this Limited Warranty during the warranty period, Buyer shall notify Manufacturer in writing of the claimed defects and demonstrate to Manufacturer satisfaction that said defects are covered by this Limited Warranty. If the defects are properly reported to Manufacturer within the warranty period, and the defects are of such type and nature as to be covered by this warranty, Manufacturer shall, at its expense, furnish replacement Products or, at Manufacturer's option, replacement parts for the defective products. Shipping and installation of the replacement Products or replacement parts shall be at the Buyer's expense.
2. **Other Limits:** THE FOREGOING IS IN LIEU OF ALL OTHER WARRANTIES, EXPRESSED OR IMPLIED, INCLUDING BUT NOT LIMITED TO THE IMPLIED WARRANTIES OF MERCHANTABILITY AND FITNESS FOR A PARTICULAR PURPOSE. Manufacturer does not warrant against damages or defects arising from improper installation (where installation is by persons other than Manufacturer), against defects in products or components not manufactured by Manufacturer, or against damages resulting from such non-Manufacturer made products or components. Manufacturer passes on to the Buyer the warranty it received (if any) from the maker of such non-Manufacturer made products or components. This warranty also does not apply to Products upon which repairs and / or modifications have been effected or attempted by persons other than pursuant to written authorization by Manufacturer. This includes any welding on equipment which could damage electrical components. Manufacturer does not warrant against casualties or damages resulting from misuse and / or abuse of Products, improper storage or handling, acts of nature, effects of weather, including effects of weather due to outside storage, accidents, or damages incurred during transportation by common carrier.
3. **Exclusive Obligation:** THIS WARRANTY IS EXCLUSIVE. The sole and exclusive obligation of Manufacturer shall be to repair or replace the defective Products in the manner and for the period provided above. Manufacturer shall not have any other obligation with respect to the Products or any part thereof, whether based on contract, tort, strict liability or otherwise. Under no circumstances, whether based on this Limited Warranty or otherwise, shall Manufacturer be liable for lost profits, lost revenue, lost sales (whether direct or indirect damages), incidental, special, punitive, indirect or consequential damages.
4. **Other Statements:** Manufacturer's employees or representatives' oral or other written statements do not constitute warranties, shall not be relied upon by Buyer, and are not a part of the contract for sale or this limited warranty.
5. **Return Policy:** Approval is required prior to returning goods to Manufacturer. A restocking fee will apply.
6. **Entire Obligation:** This Limited Warranty states the entire obligation of Manufacturer with respect to the Products. If any part of this Limited Warranty is determined to be void or illegal, the remainder shall remain in full force and effect.



USC, LLC

2320 124th road

Sabetha, KS 66534

PHONE: (785) 431-7900

FAX: (785) 431-7950

EMAIL: sales-team@uscllc.com

WEB: www.uscllc.com

